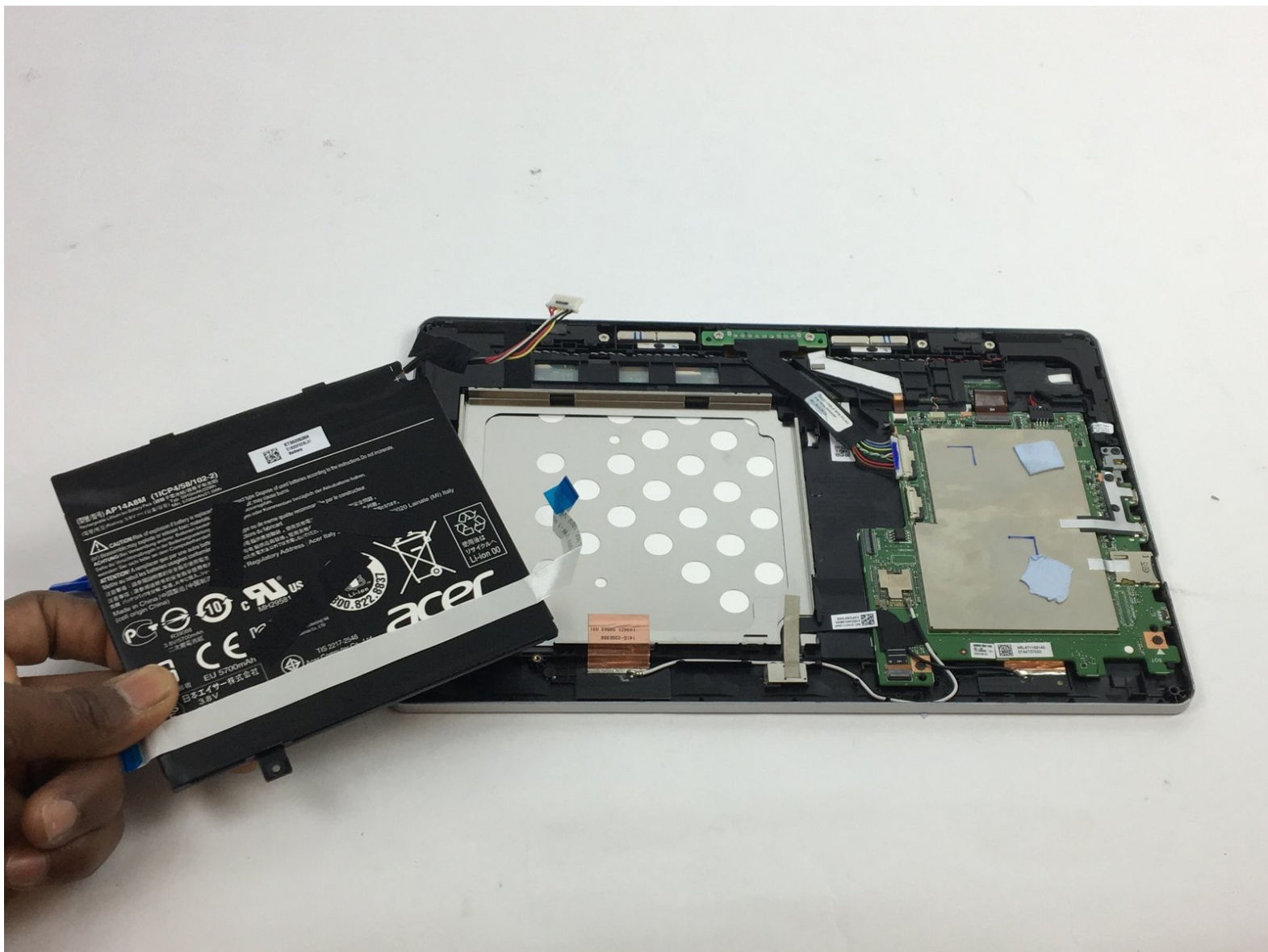




Acer Aspire Switch 10 SW5-011-18R3 Battery Replacement

Use this guide to replace the battery on the Acer Aspire Switch 10 SW5-011-18R3.

Written By: Richard Colon



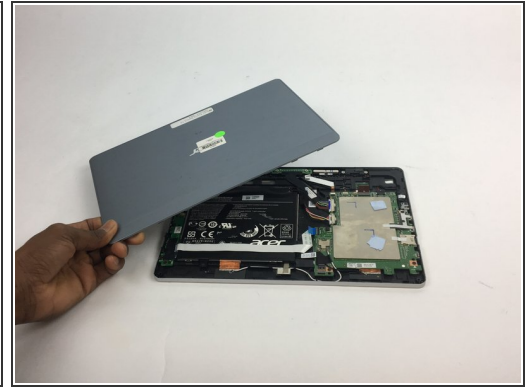
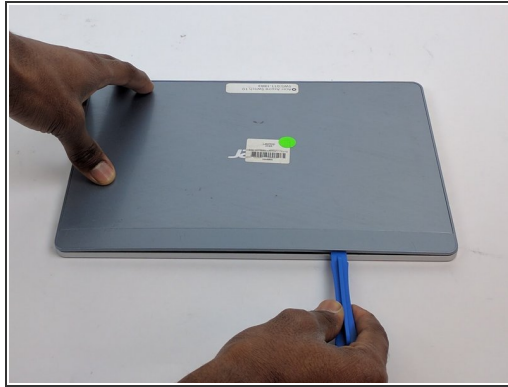
INTRODUCTION

If your device can't power on or has trouble retaining charge, you may need a new battery. Use this guide to replace the battery on your device.

TOOLS:

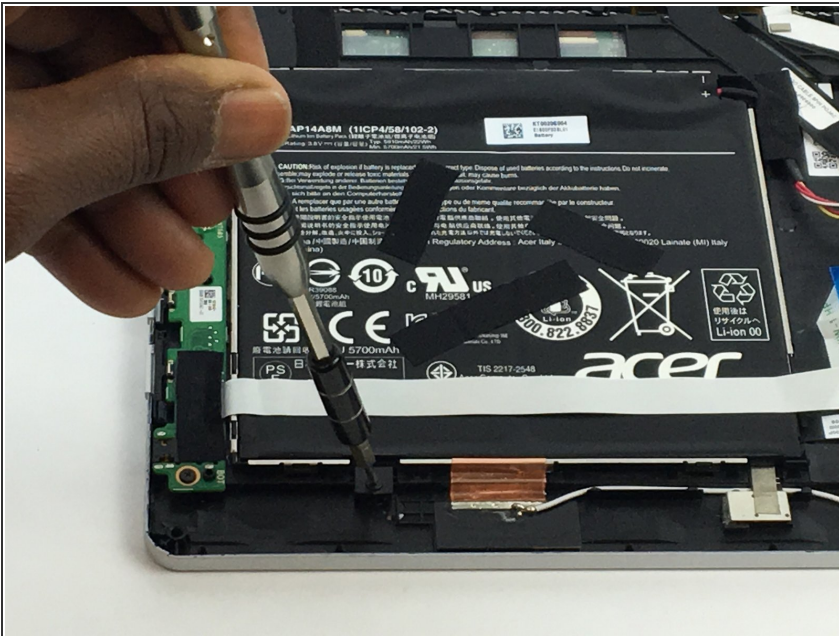
- [iFixit Opening Tools](#) (1)
 - [Phillips #000 Screwdriver](#) (1)
-

Step 1 — Battery



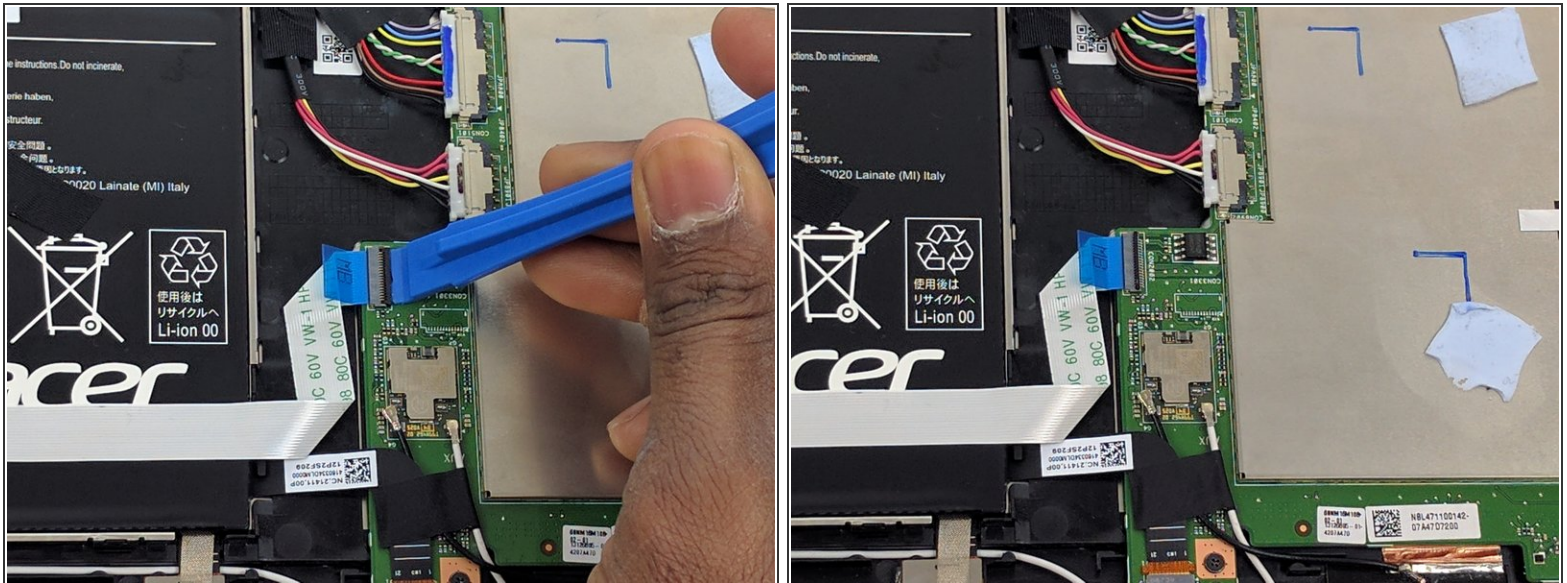
- Wedge your plastic opening tool into the crevice on the volume rocker and pull down like a lever to create space.
- Slide the plastic opening tool along the crevice to separate the back plate.

Step 2



- Use your screwdriver with the Phillips PH000 attachment to unscrew the single 4mm screw that holds the battery to the base plate.

Step 3



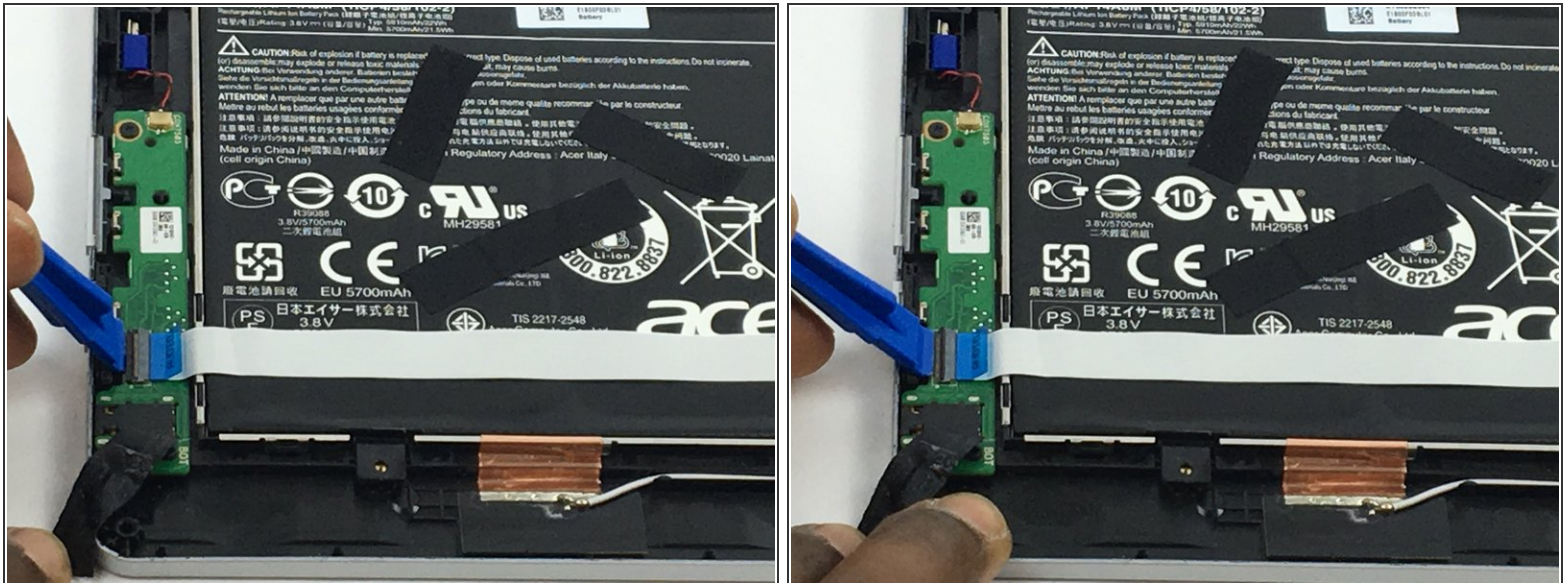
- Gently slide the plastic opening tool under the black clip that is attached to the audio ribbon cable.
- Pull down on the plastic opening tool like a lever to flip the black clip and remove the ribbon cable.
- ① The black clip doesn't take much force to lift, so be gentle to avoid breaking it.

Step 4



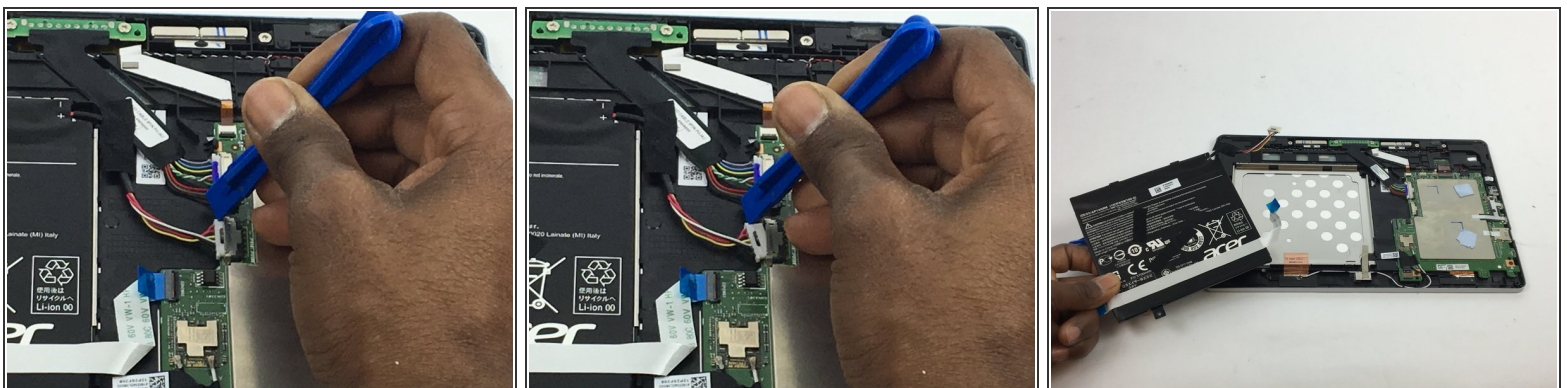
- Remove the tape to expose the left side of the ZIF connector.

Step 5



- Use a plastic opening tool to flip up the black clip on the ZIF connector.
- Once the black clip is flipped up, it is safe to remove the audio ribbon cable.

Step 6



- Use a plastic opening tool to gently push the edge of the sliding bundle cable connector out.
- ❗ The smaller bundle cable connector is the only one that needs to be removed.
- Remove the battery.

To reassemble your device, follow these instructions in reverse order.

This document was generated on 2020-11-14 01:11:26 AM (MST).

