



# Monster SoundStage S1 Mini Speaker Replacement

This guide will help replace the two speakers in the Monster SoundStage S1 Mini.

Written By: Heather Carrillo



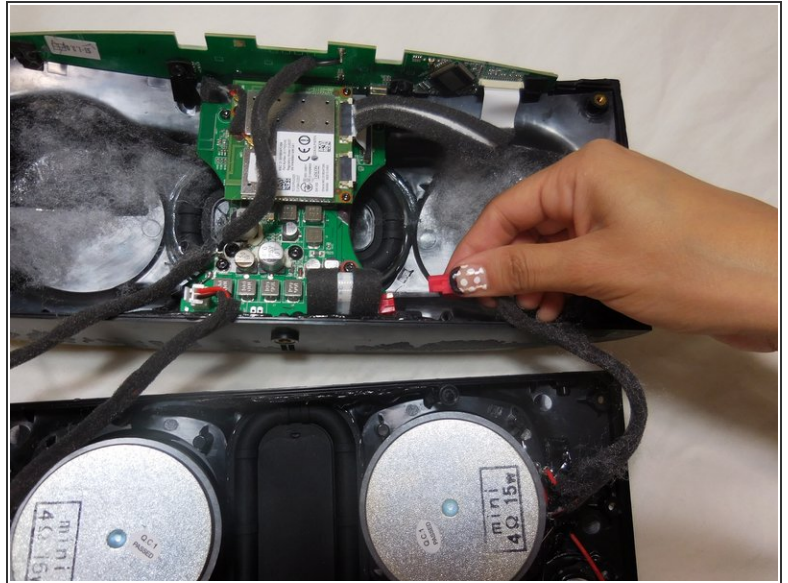
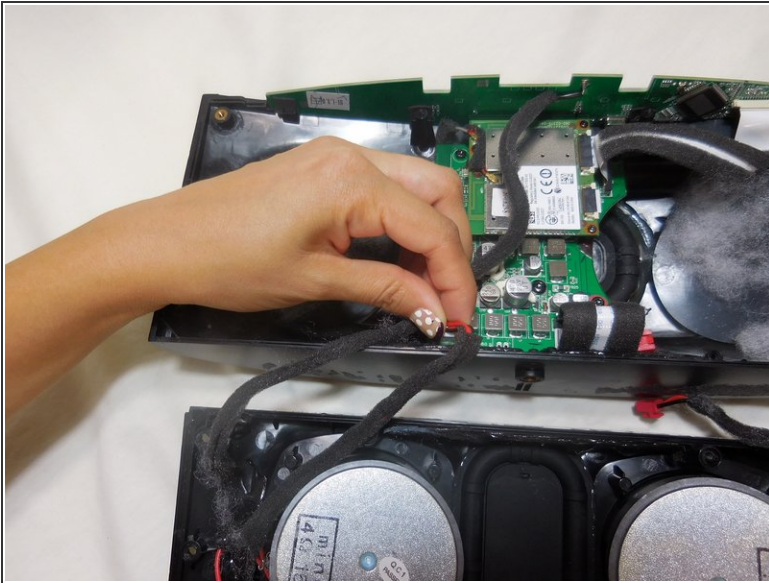


## TOOLS:

- [T10 Torx Security Bit Screwdriver](#) (1)
  - [Soldering Iron](#) (1)
  - [Slip Joint Pliers](#) (1)
-



## Step 1 — Speaker



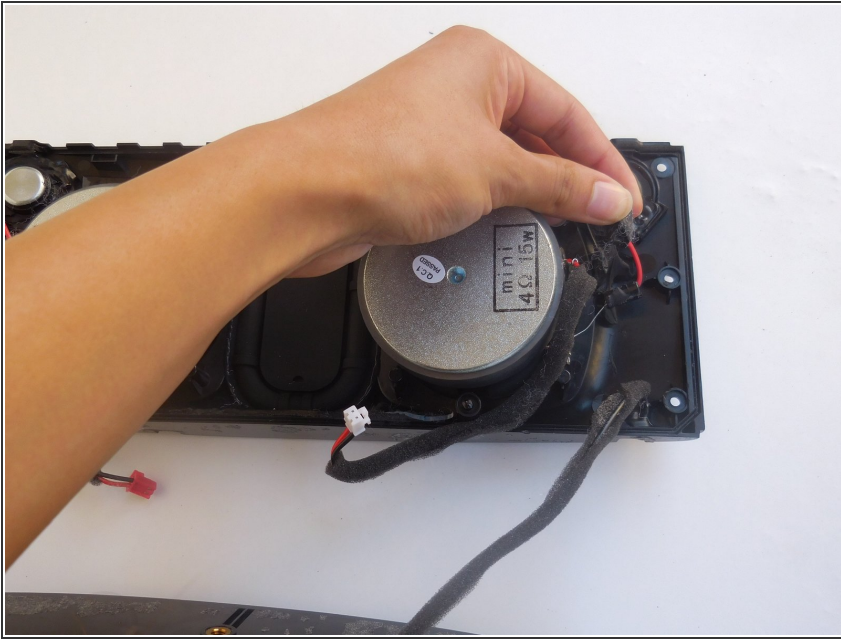
- Remove the speaker wires from the motherboard by pinching the plastic tab at the end of the cable and pulling towards you.

## Step 2



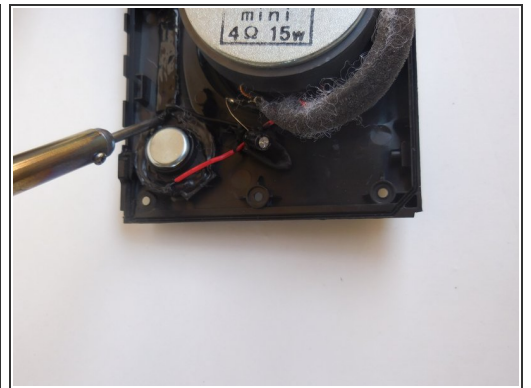
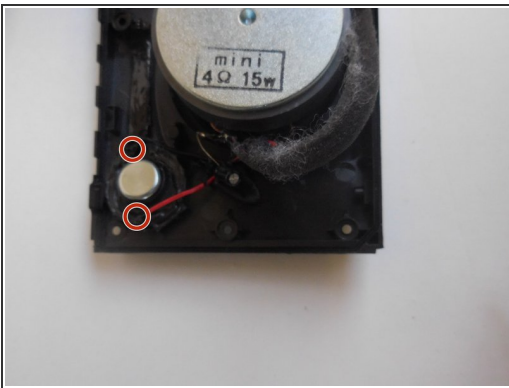
- Unscrew 1.2 cm Torx security screw, holding the silver circle connector, to disconnect the wire from the speakerboard to the motherboard

### Step 3



- Remove the black putty from the speaker wires at both ends of the speaker board.

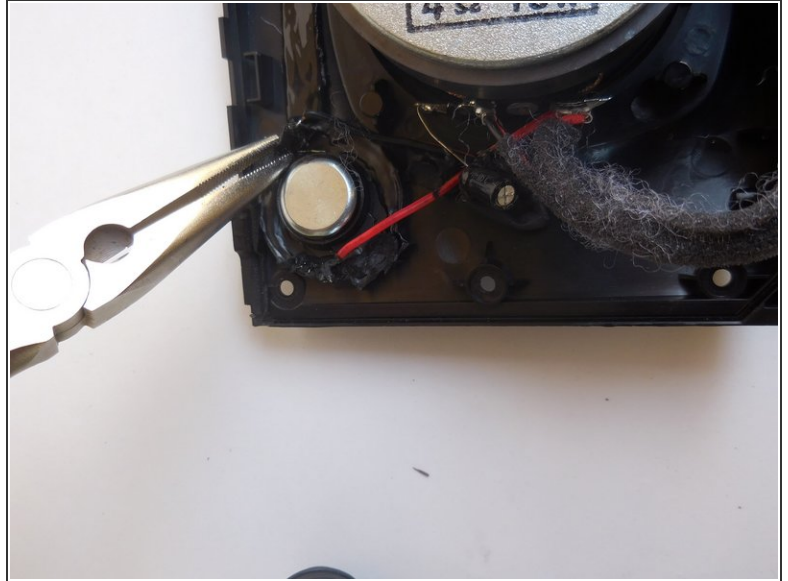
### Step 4



- Solder the black plastic encasing the red and black wires.



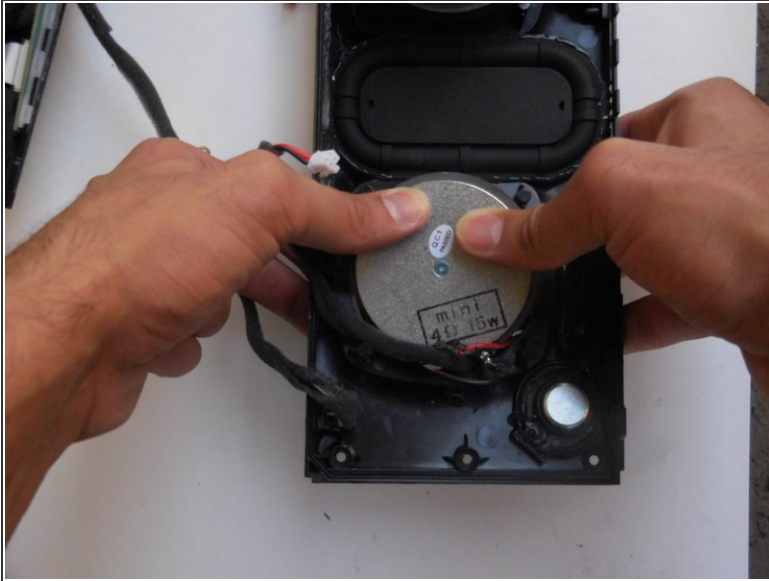
## Step 5



- Remove both the black and red wires with pliers

⚠ Pliers may stick to speaker because it is magnetic.

## Step 6



- Tuck wires through the hole where the speaker is located, then gently push the speaker out.

⚠ The 1.2 cm Torx security screws that stayed in place near the speaker will now fall out.

ⓘ To remove the other speaker repeat steps 3-6

To reassemble your device, follow these instructions in reverse order.