



Dell Inspiron 9300 Trackpad Replacement

This repair guide includes step by step instruction for replacing your Dell 9300 trackpad

Written By: Steven Faulkner





TOOLS:

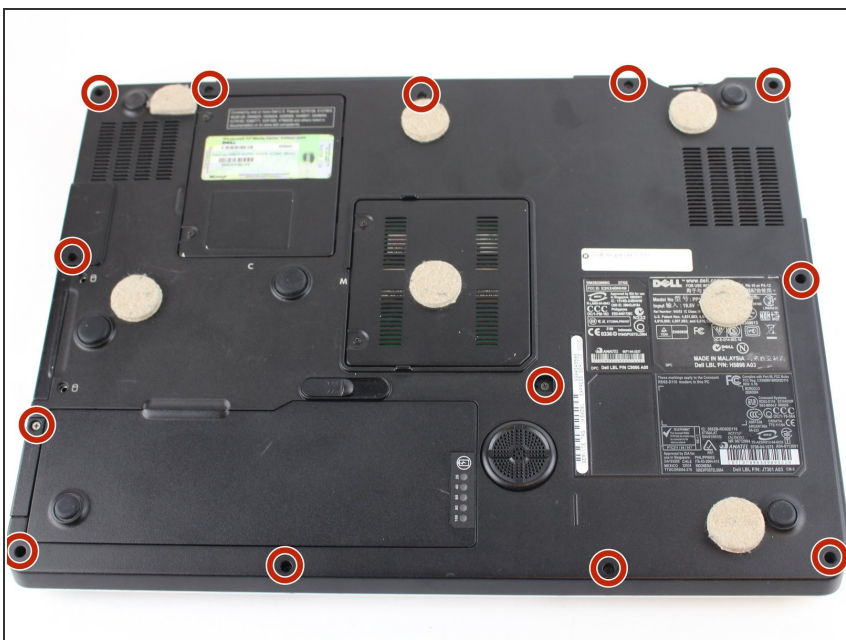
- [Heavy-Duty Spudger](#) (1)
 - [64 Bit Driver Kit](#) (1)
-

Step 1 — Trackpad



- Remove the battery in to order avoid damaging internal components.

Step 2



- Remove the twelve 6mm Phillips case screws from the bottom of the case.

Step 3



- Gently pry away the silver bezel above the keyboard and below the display using a spudger.
- ❗ Start on the right hand side, where there is a notch in the bezel for easiest removal.

Step 4



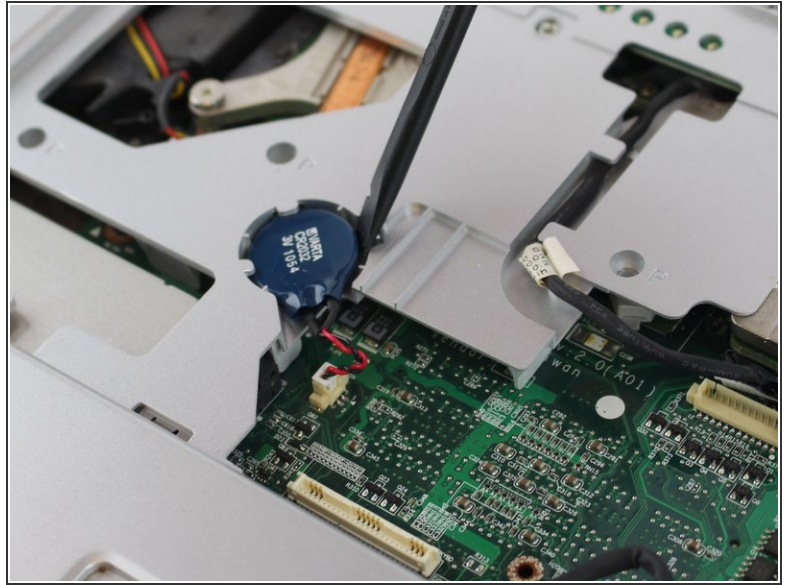
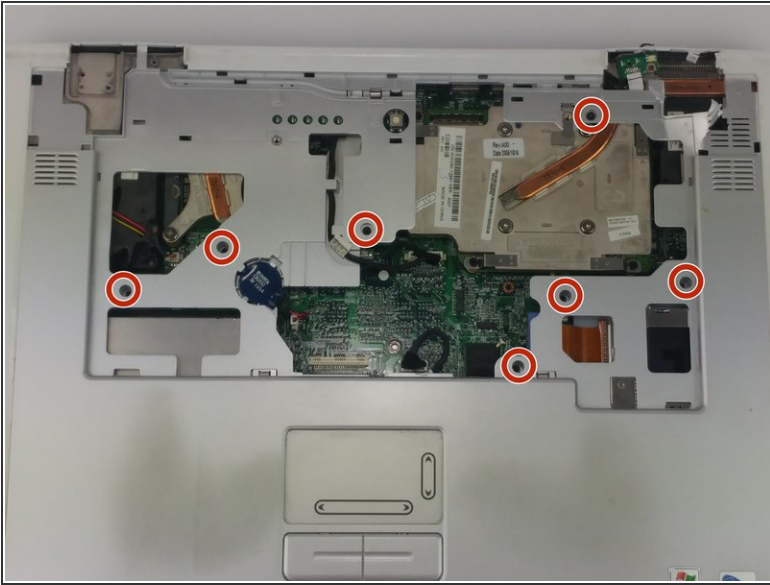
- Remove the two 5mm Phillips screws retaining the keyboard.
- Pull the keyboard up and toward the monitor to reveal the ribbon cable beneath.
- Firmly grasp the blue tape attached to the keyboard ribbon cable connector and pull upward away from the motherboard

Step 5



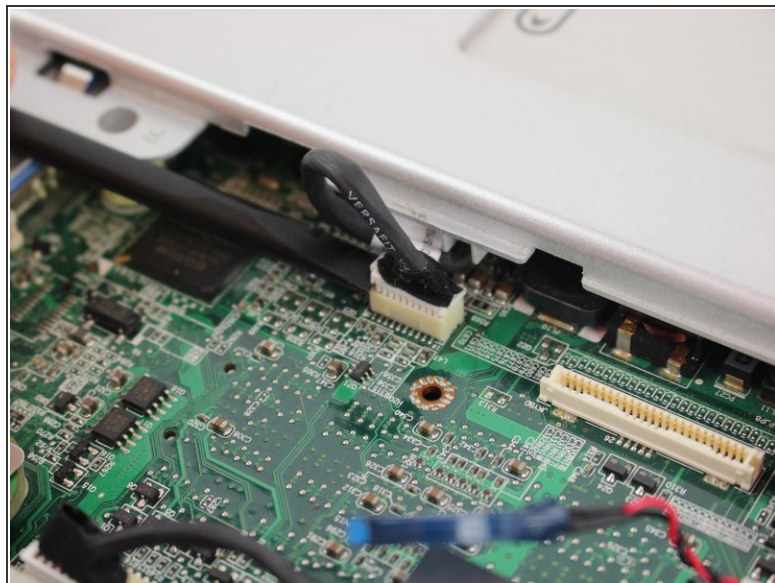
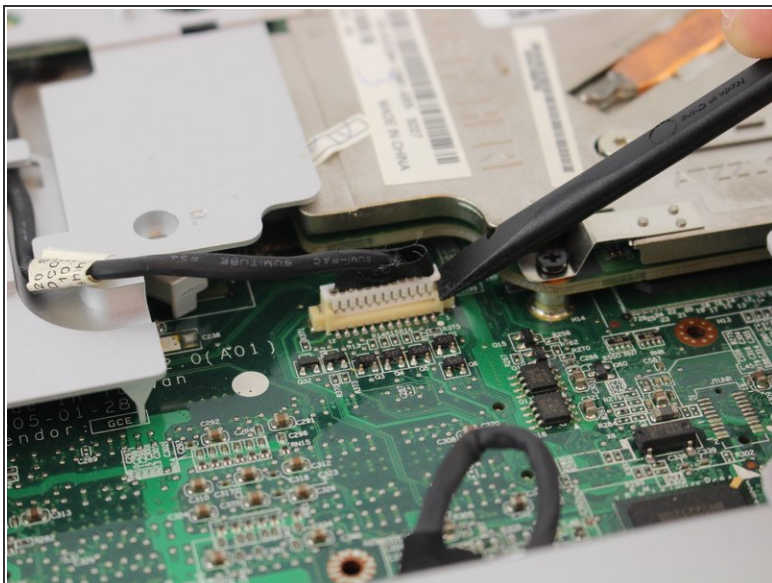
- Firmly grasp the blue tape attached to the LCD display ribbon cable connector and pull upward away from the motherboard.
 - Remove the two 5mm Phillips screws holding the display hinge on both sides of the laptop.
- ⚠ Support the display as you loosen the hinges, to avoid the screen falling and breaking.

Step 6



- Remove the seven 6mm Phillips screws holding the trackpad/palm rest to the motherboard.
- Gently pry the CMOS battery out of its retaining clip using a spudger

Step 7



- Remove the low profile connector for the keyboard status lights located next to the video card heat sink using a spudger
- Remove the trackpad ribbon cable from the motherboard using a spudger

Step 8



- Pull up and away on the uppercase to remove.

To reassemble your device, follow these instructions in reverse order.