



Microsoft Surface Pro 2 LCD Display Replacement

First step in disassembly of the Surface Pro 2 and display replacement guide.

Written By: Mathew B



INTRODUCTION

If your screen is unresponsive to touch, cracked, or flickering than placing your screen may solve these problems.



TOOLS:

- [iFixit Opening Tool](#) (1)
- [Suction Handle](#) (1)
- [Heat Gun](#) (1)
- [Spudger](#) (1)



PARTS:

- [Surface Pro/Pro 2 Screen](#) (1)

Step 1 — LCD Display



⚠ To avoid electrical shocks, unplug and turn off your Surface Pro 2 before proceeding.

Step 2



⚠ Avoid any skin or eye contact with the heating pad or heating gun because they may cause bodily harm.

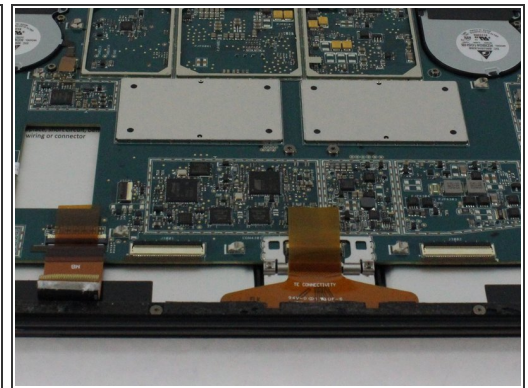
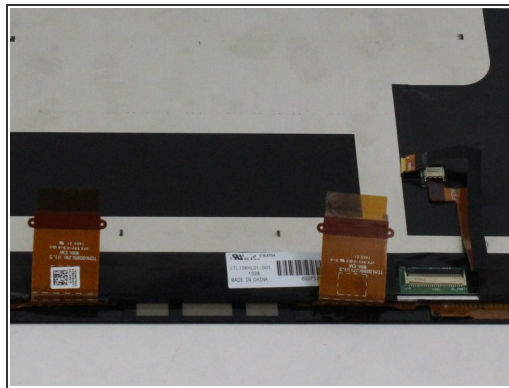
- Using a heating pad or heating gun, heat the edges of the screen to soften the glue. This area extends roughly one inch from the edge of the device.
- ⓘ The glue is under the darker border of the device display.

Step 3



- Using a plastic opening tool and a suction cup as needed for leverage, gently insert one edge of the opening tool under the corner of the screen.
- ❗ If the tool does not easily slide under the screen, return to heating before proceeding.
- Slowly work the tool around the entire edge of the screen.

Step 4



- Detach the orange cables that connect the screen to the motherboard by pulling on the small tabs. Using the nylon spudger, release these cables.
- ❗ Please note the third small connector in red.
- Allow the glue to cool before letting it come into contact with any other surface.

To reassemble your device, follow these instructions in reverse order.