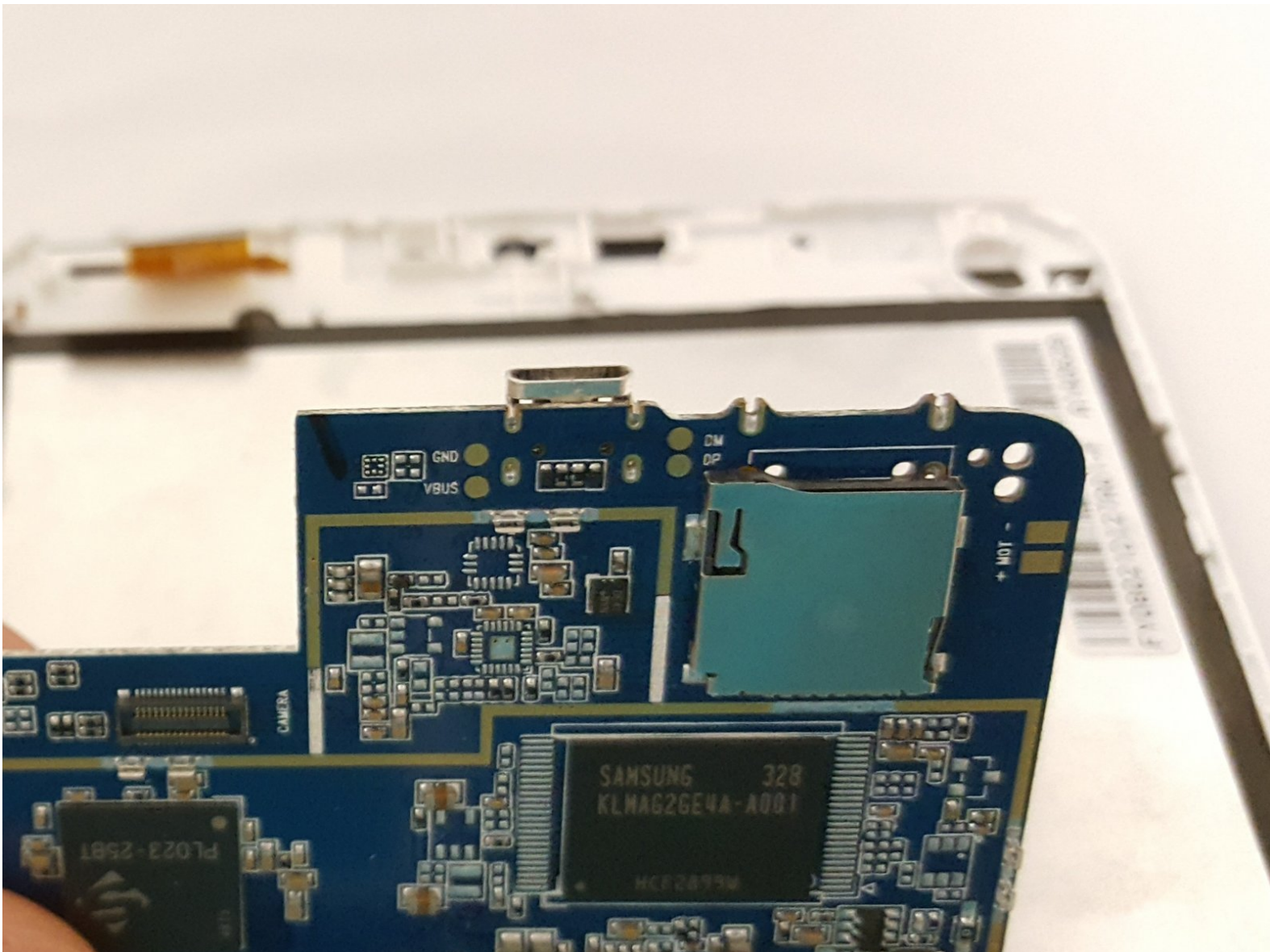




Digital2 D2-861G Charging Port Replacement

To replace the Digital2 charging port for the D2-861G model.

Written By: Eduardo Duran



INTRODUCTION

This guide will be showing you how to replace the charging port for the Digital2 D2-861G model. Be sure to carefully remove parts to avoid damaging the device.



TOOLS:

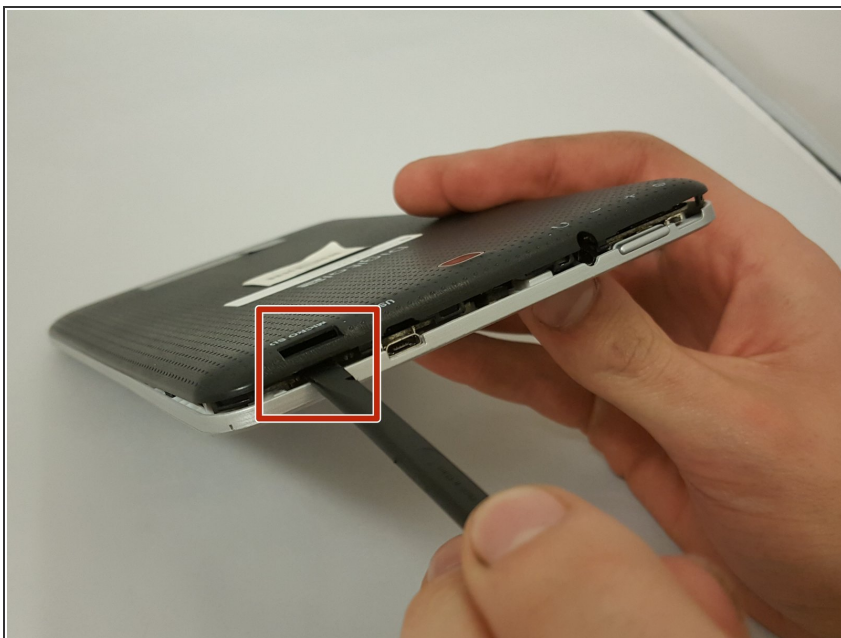
- [Spudger](#) (1)
 - [Phillips #00 Screwdriver](#) (1)
-

Step 1 — Motherboards



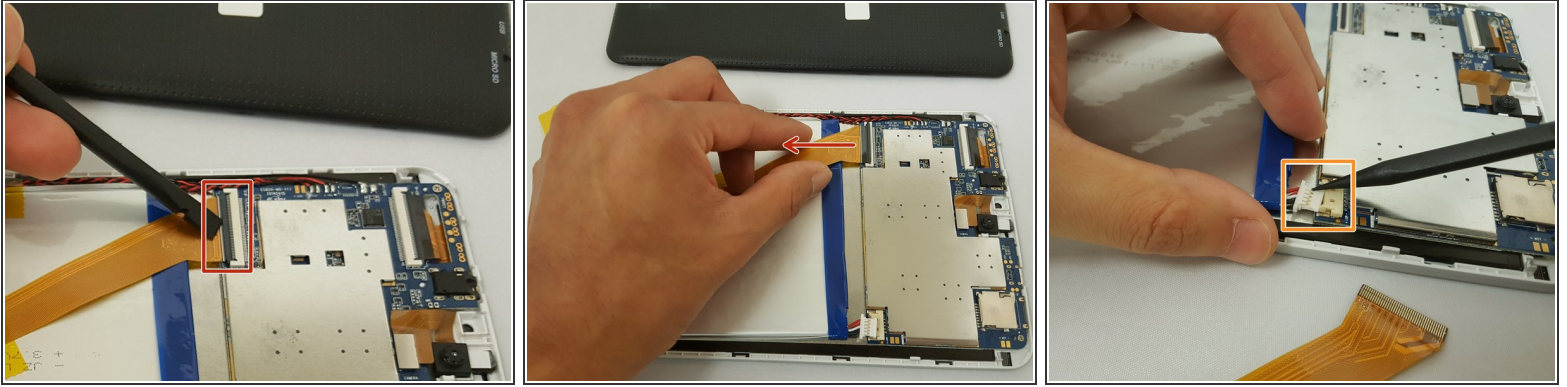
- ⚠ Working on your device while powered on may result in electric shock. Make sure to unplug and power down your device before you begin.
- ⓘ Place your device on a soft cloth to avoid scratching the screen.
- Flip your device over so back panel is facing upwards.

Step 2



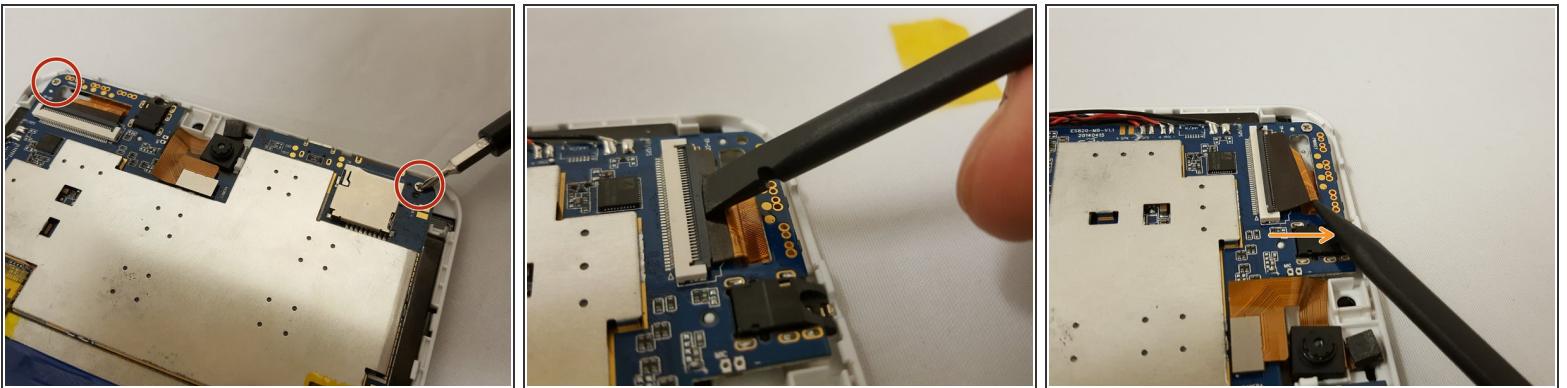
- ⚠ Do not use a lot of force as it can break the clips or the back panel.
- Insert spudger in the slot below the micro SD card.
- ⓘ You should hear clips releasing as you pry along the edges.
- With the spudger tool, run along the edges of the backing undoing 20 plastic clips.

Step 3



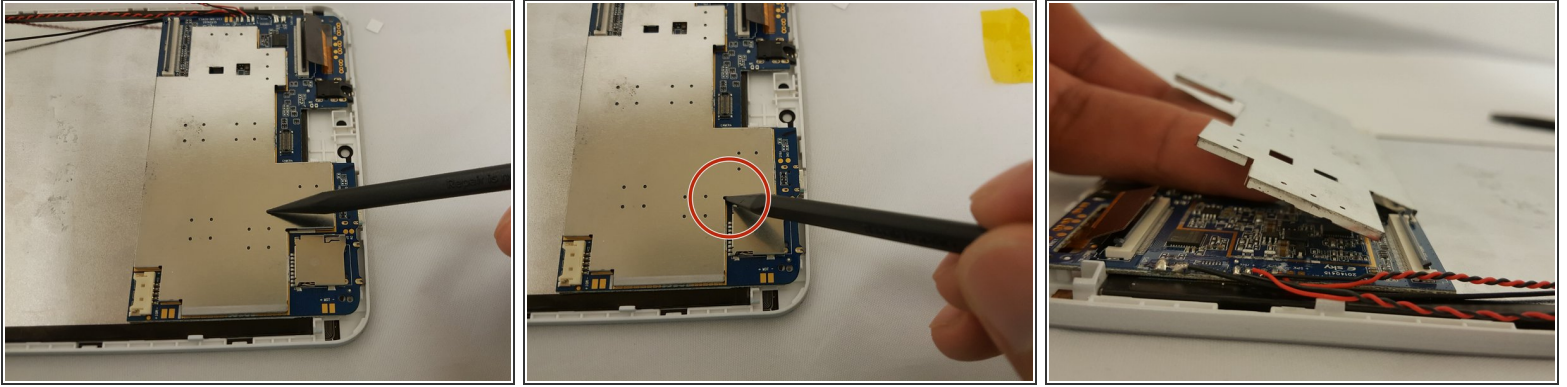
- Locate the gold colored ZIF (Zero insertion force) connector and disconnect it from the motherboard.
- ⓘ To disconnect the ZIF connector, go under the black tab and lift up. Then pull the connector out.
- Locate the bundled cable connector and disconnect it by simply pulling it gently or using a spudger.
- ⓘ Disconnecting the bundled cable connector helps avoid short circuiting anything on the device.

Step 4



- ⓘ Make sure to have your magnetic board to hold your screws.
- Remove two 3.51mm screws that are located on the top corners with your Phillips #00 screwdriver.
- Next, unplug the ZIF connector by going under the black tab and simply lift up.
- Slide the connector out with the pointed side of the spudger.

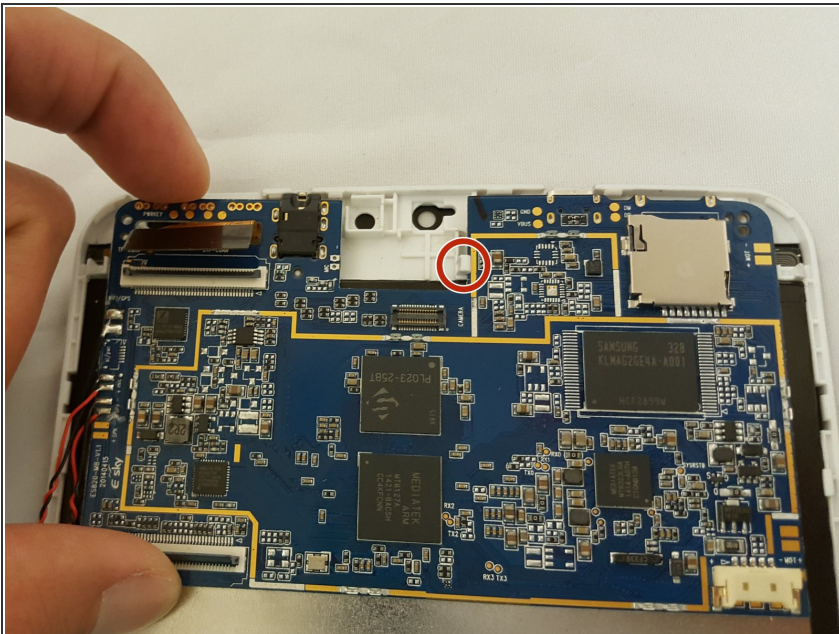
Step 5



i This step is optional if you want to remove the metal casing.

- Insert the pointed side of the spudger in the corner and gently lift.
- Once one side is lifted, use your fingers and with little force, lift up to remove the case.

Step 6



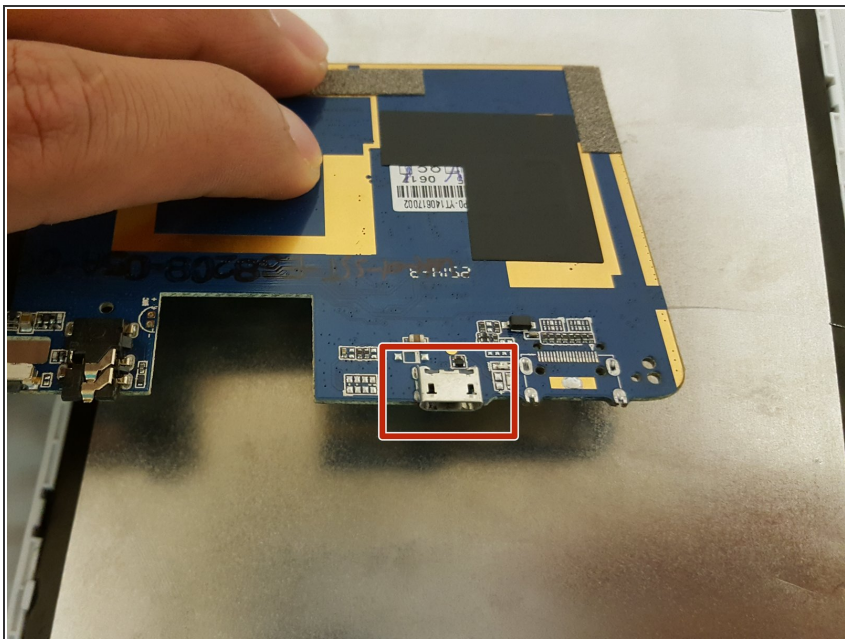
! Use little force or else you risk breaking the motherboard.

i Watch out for the ZIF connector!

★ There is a white clip holding the motherboard.

- To remove the motherboard, grab the component on the top left and gently lift while pushing or pulling to the right.

Step 7 — Charging Port



- i Refer to iFixit's guide on how to Solder [How To Solder and Desolder Connections](#)
- To replace the charging port, you can either replace the motherboard or desolder the port.

To reassemble your device, follow these instructions in reverse order.