



Nikon D3100 Motherboard Replacement

If your camera is malfunctioning or the...

Written By: Jet Mejia



INTRODUCTION

If your camera is malfunctioning or the external connection (micro USB and HDMI) ports are not working, then the camera's motherboard might be faulty and needs to be replaced. Before starting with this guide, refer to this [troubleshooting page](#) to check if there are any other possible causes.

TOOLS:

[iFixit Opening Tool](#) (1)

[Heating Pad \(optional\)](#) (1)


[Phillips #00 Screwdriver](#) (1)

[Tweezers](#) (1)

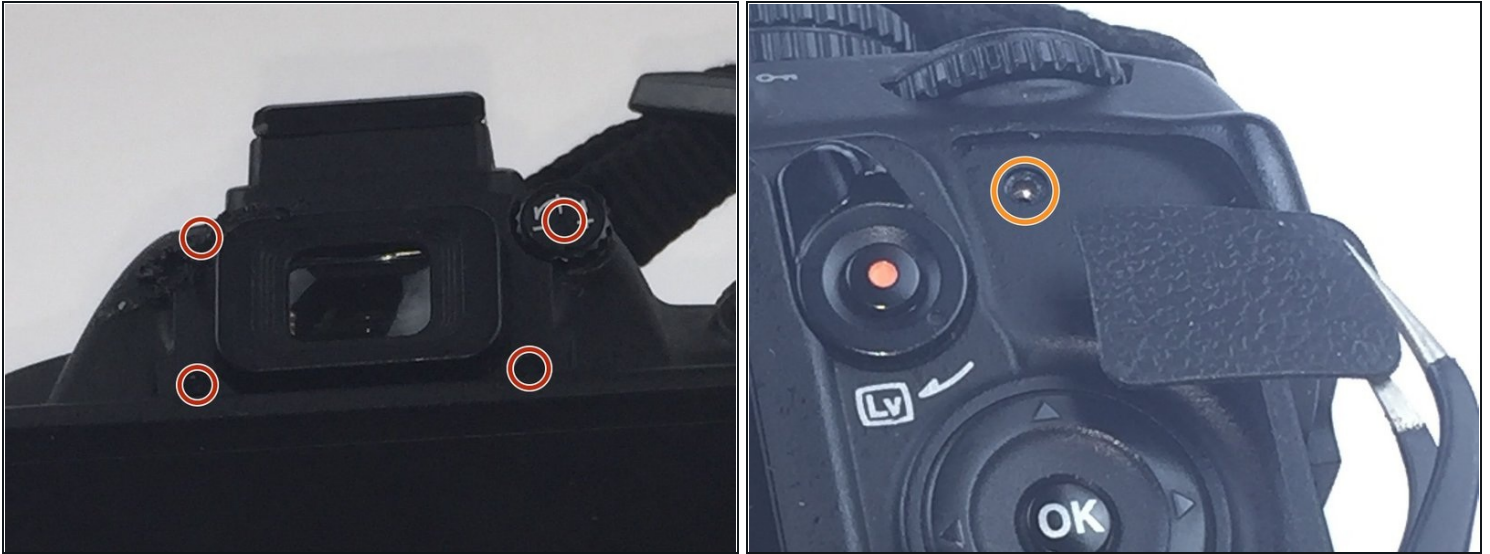
[Spudger](#) (1)

Step 1 — LCD Screen



-  Use a Phillips #00 screwdriver for all of the screws.
- Remove two of the 4mm screws indicated by the circles on the bottom side of the camera.

Step 2



- Remove four of the 3mm screws around the eye piece located on the top of the back panel, including the screw hidden behind the auto focus label.
- Remove the 3mm screw behind the rubber grip on the top right of the back panel.

Step 3



- Peel back the rubber grip on the right side of the camera using a spudger.

⚠ You may need a heating pad to melt the glue holding the rubber grip to the camera. If using the heating pad, use caution and handle carefully.

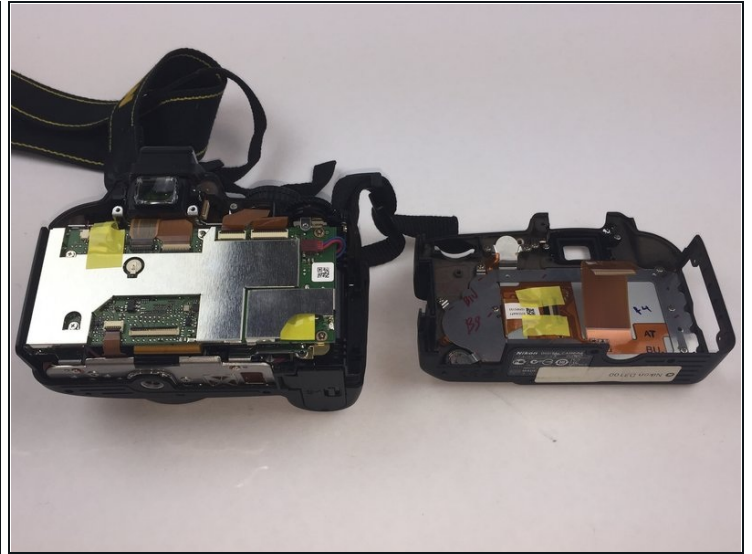
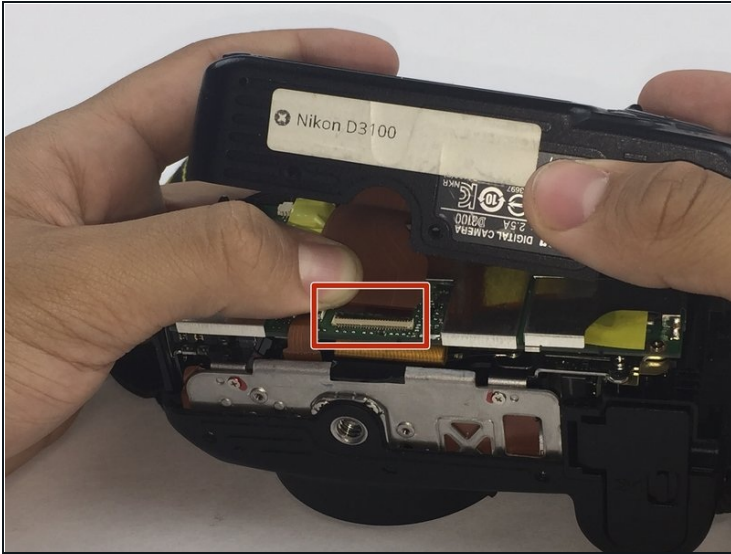
- Remove two of the 5mm screws under the rubber grip.

Step 4



- Remove two of the 4mm screws on the left side of the camera.

Step 5

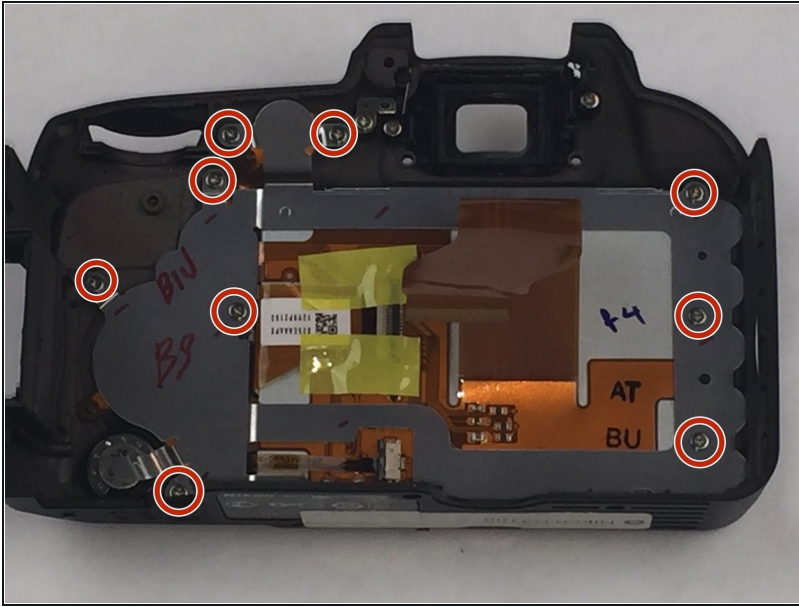


- Starting from the top, gently lift the back panel of the camera off. Slowly separate the back panel from the main body of the camera.

⚠ Be careful not to pull the panel out too fast or the ribbon may be damaged.

- Carefully remove the ribbon using a spudger to lift up the connector and then use [tweezers](#) to pull out the ribbon.
- Separate the back panel from the main body of the camera.

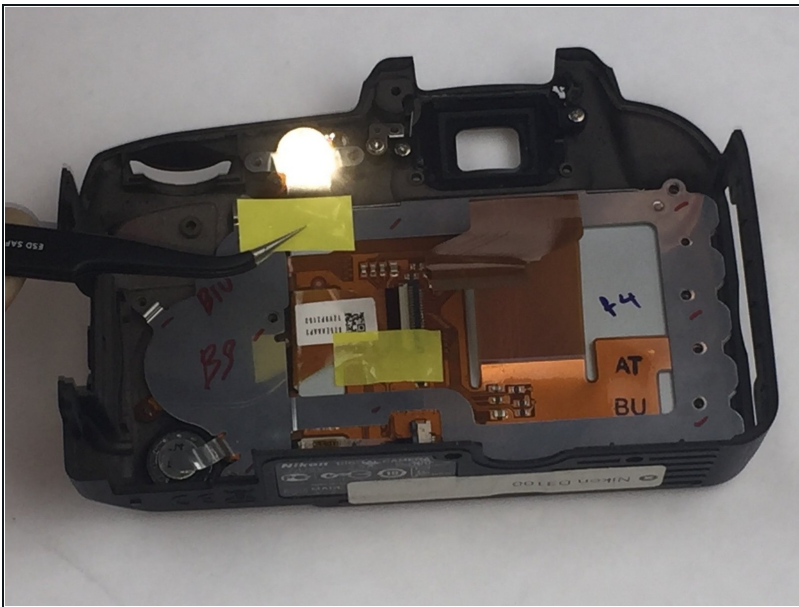
Step 6



⚠ Be careful when separating the metal plate from the back panel because the speaker wire is connected to the metal plate. It can easily be torn if caution is not taken.

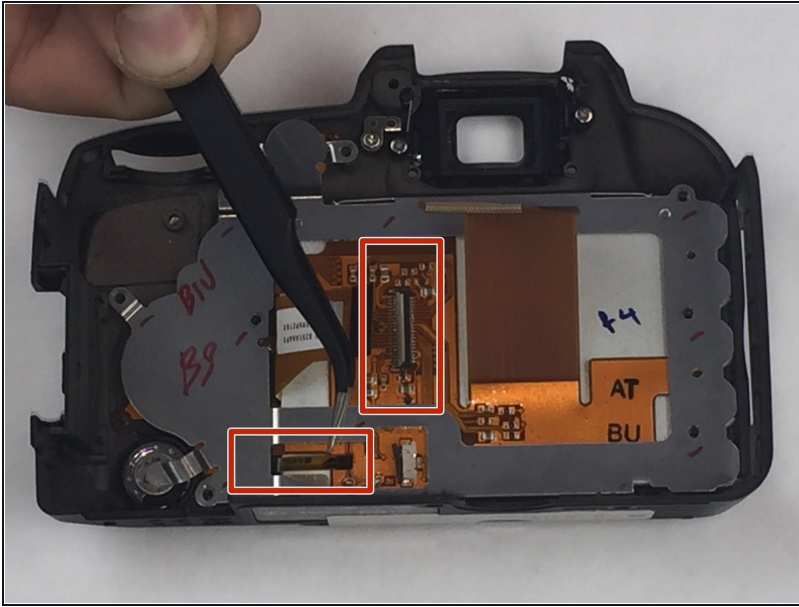
- Remove nine of the 3mm screws connecting the metal plate to the plastic panel.

Step 7



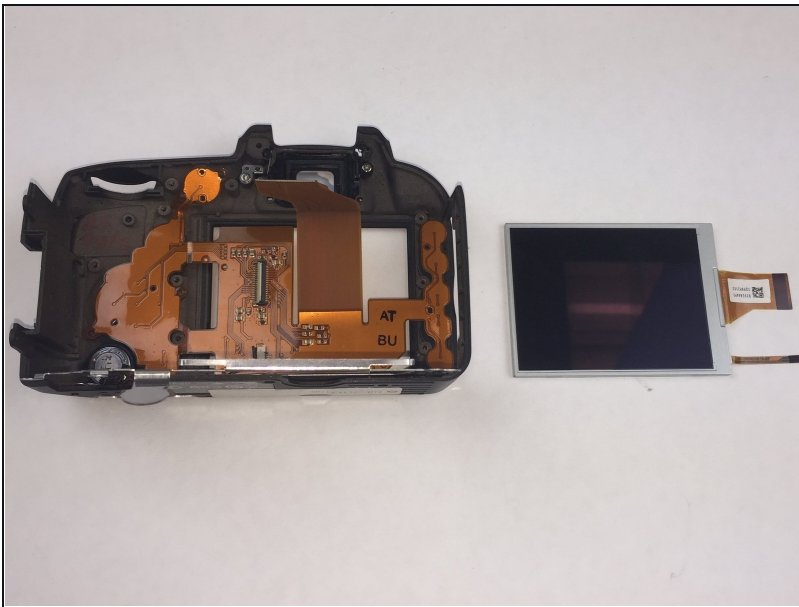
⚠ Remove the tape covering the ribbons. Be careful not to break the tape.

Step 8



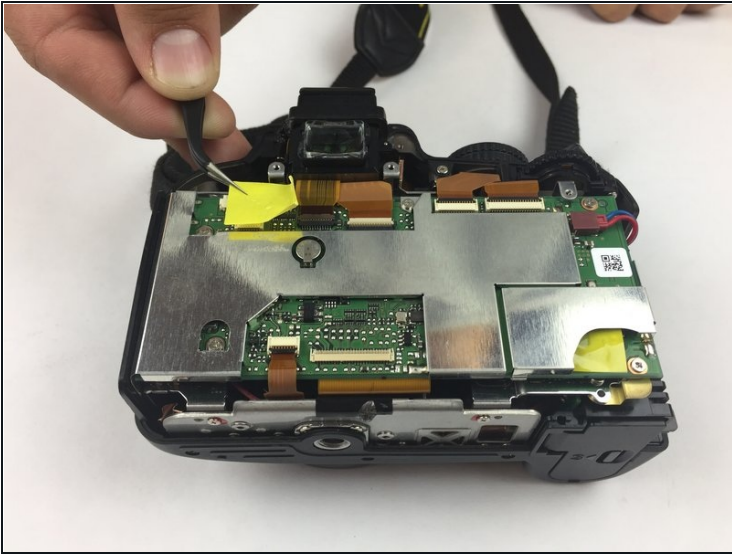
- Remove the two ribbons connecting the LCD screen to the metal plate using the same method from Step 5.

Step 9



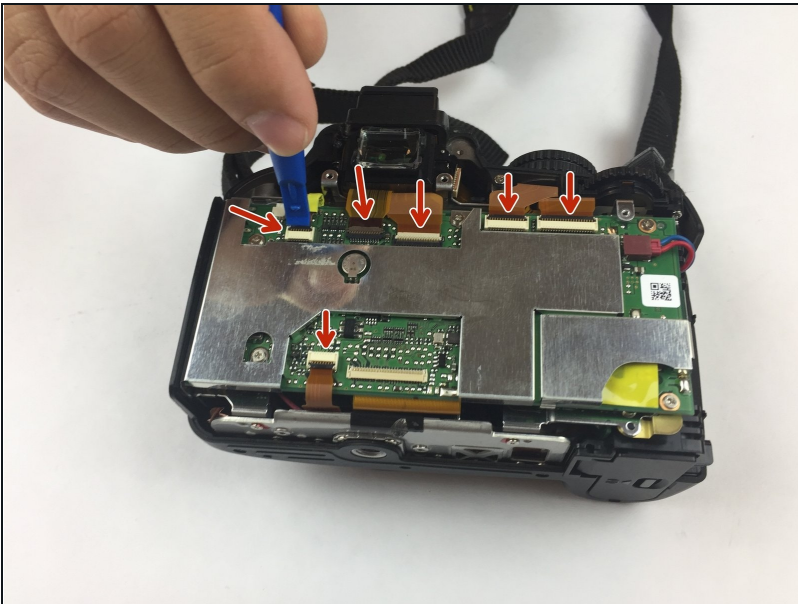
- Remove the old LCD screen from metal plate.

Step 10 — Motherboard



- Use [tweezers](#) to gently lift the yellow tape from the back of the camera.

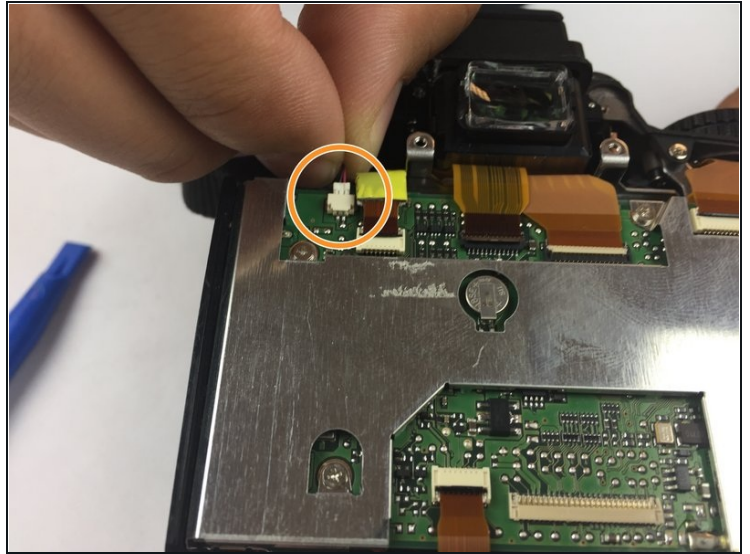
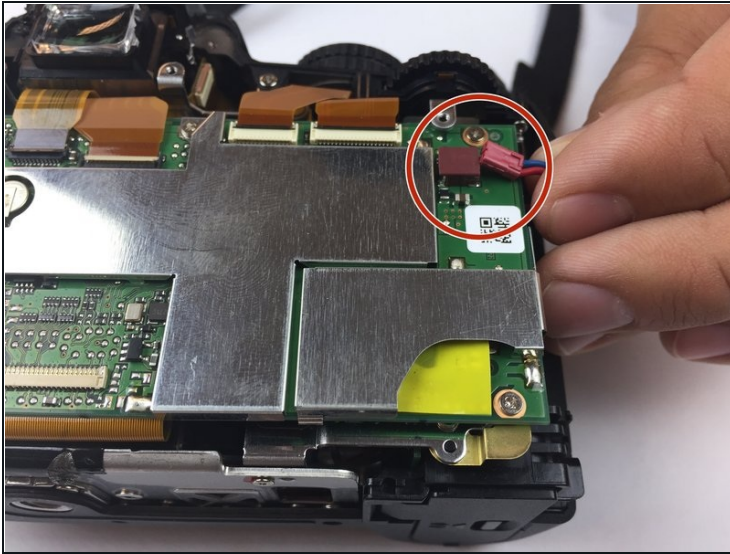
Step 11



- Use a plastic spudger to remove the 6 ribbons.

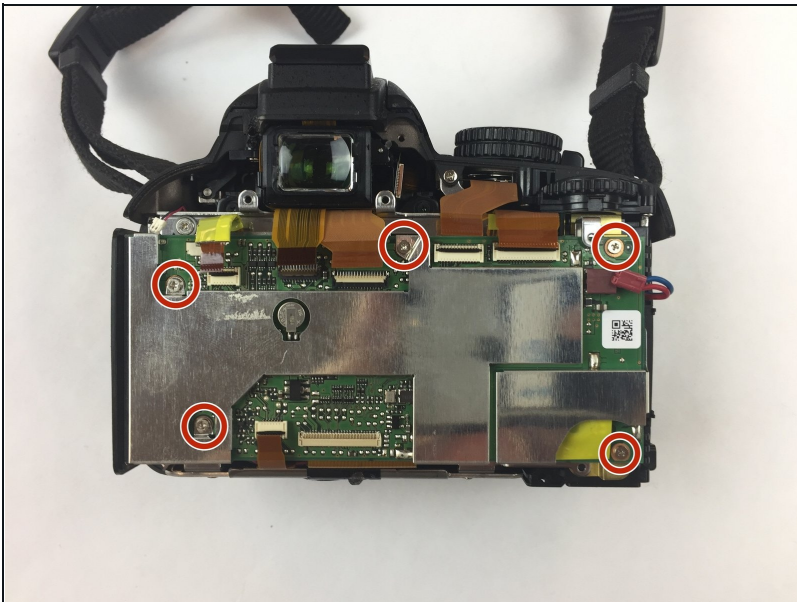
⚠ Be careful not to tear the ribbons.

Step 12



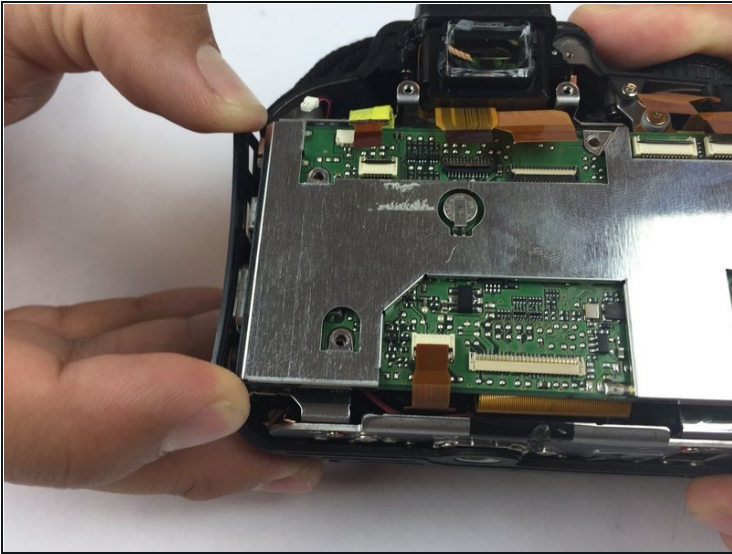
- Remove the plug located on the top-right side of the camera.
- Remove the plug located on the top-left side of the camera.

Step 13



- Use a Philips #00 Screwdriver to remove the five 3 mm screws marked in the image.

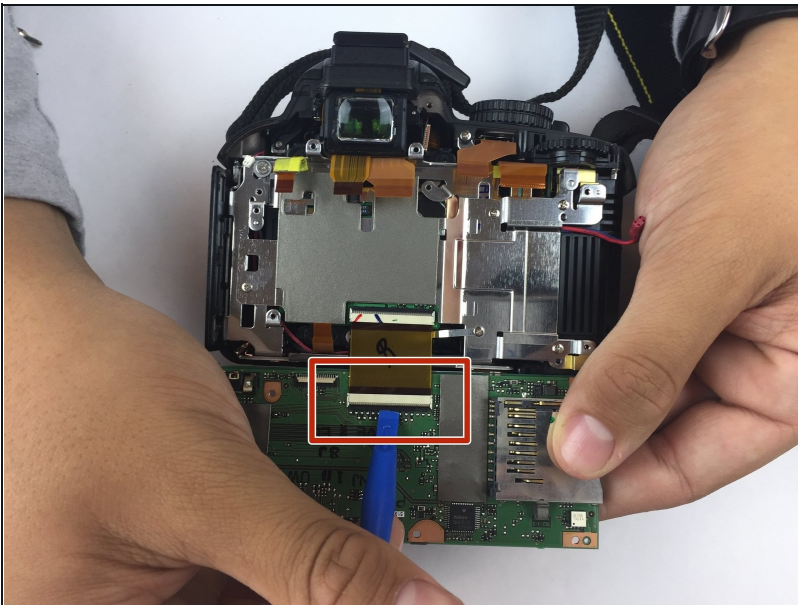
Step 14



- Gently pull out the side wall of the camera so that the motherboard comes out easier.

⚠ Do not pull too hard or you will risk breaking the plastic.

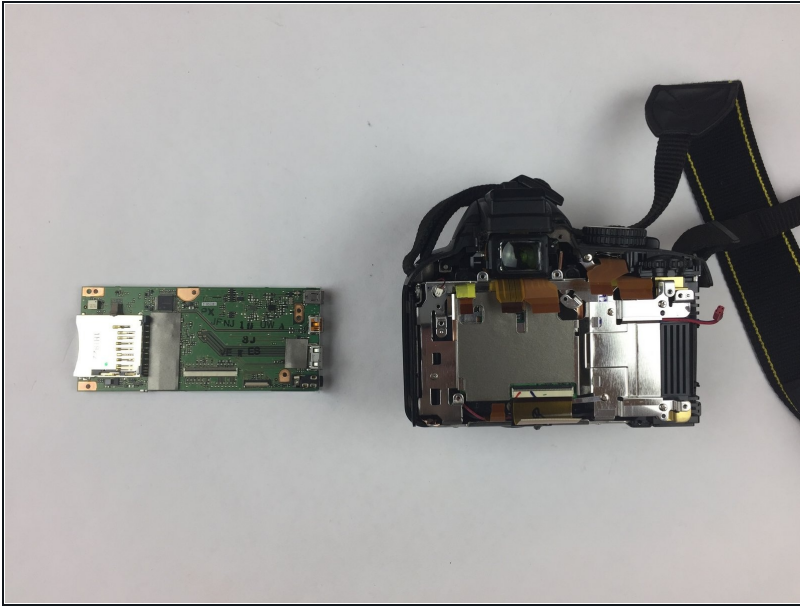
Step 15



⚠ Be careful while lifting the motherboard because there is one more ribbon attached.

- Gently lift the motherboard to separate it from the back of the camera.
- Use a plastic spudger to detach the ribbon.

Step 16



- Replace the motherboard.

To reassemble your device, follow these instructions in reverse order.