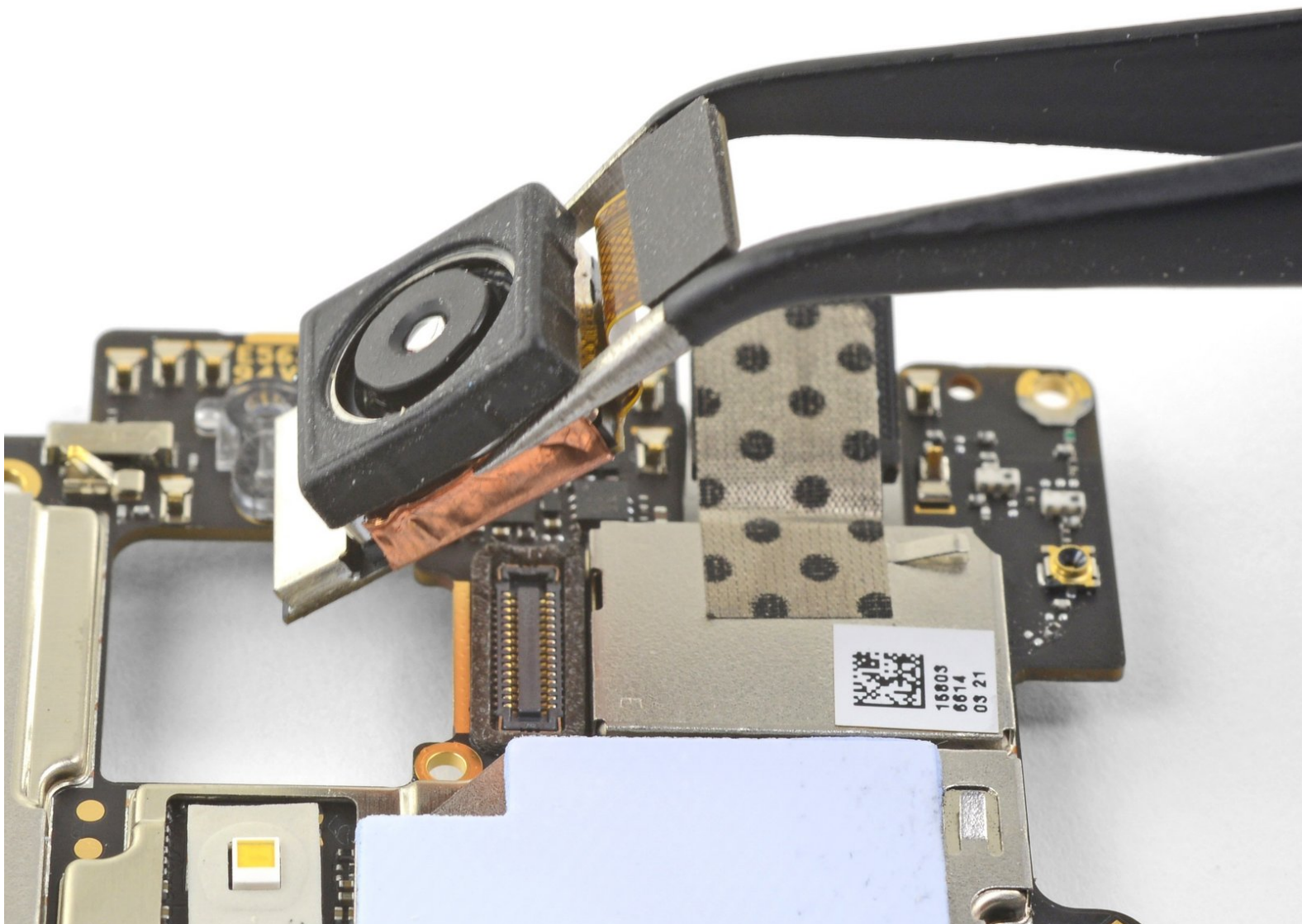




OnePlus 3 Rear-Facing Camera Replacement

Follow this guide to remove and replace the rear-facing camera for the OnePlus 3.

Written By: Arthur Shi



INTRODUCTION

This guide shows how to remove and replace the rear-facing camera for the OnePlus 3.

Due to the phone's design, you have to loosen/remove the motherboard in order to remove the rear-facing camera. The hardest part of the guide is getting the frame clips of the back cover free.

Some guide images will show the battery already removed from the phone. You do not need to remove the battery for the rear-facing camera procedure.



TOOLS:

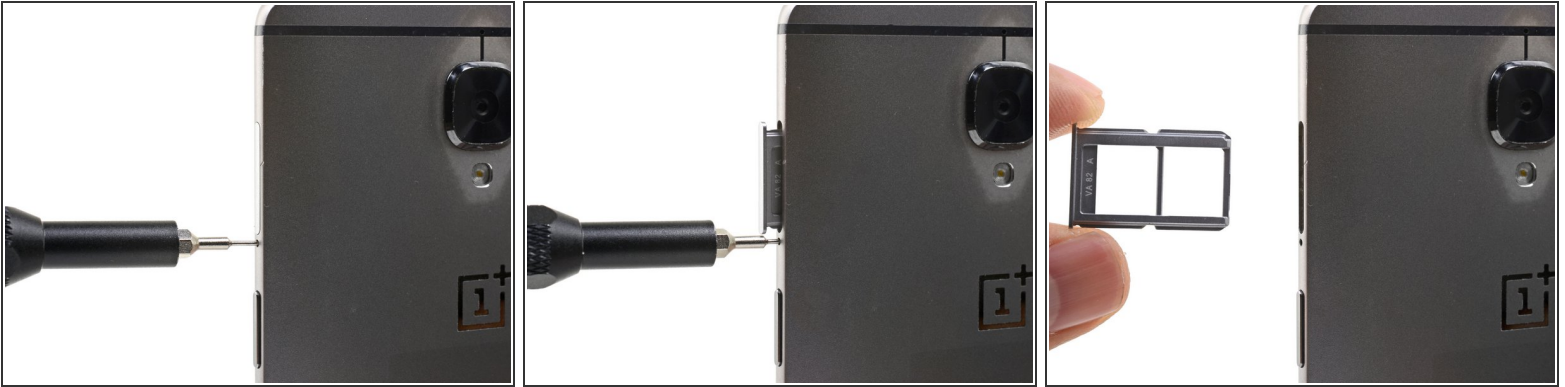
- [SIM Card Eject Tool](#) (1)
- [T2 Torx Screwdriver](#) (1)
- [Suction Handle](#) (1)
- [iFixit Opening Tools](#) (1)
- [Phillips #00 Screwdriver](#) (1)
- [Spudger](#) (1)
- [Tweezers](#) (1)



PARTS:

- [OnePlus 3 Rear Camera](#) (1)

Step 1 — SIM Card Tray



- Insert a SIM eject tool, bit, or straightened paperclip into the hole located between the SIM card slot and the power button.
 - Press firmly to eject the SIM card tray.
- ☒ During reinstallation, make sure that the SIM card tray is properly oriented. It fits in only one direction.

Step 2 — Back Cover



- Remove the two 2.6 mm T2 screws from the bottom edge of the phone.

Step 3



⚠ There is a high risk of damaging the display panel if this opening procedure is improperly followed.

i The following three steps show how to pry the rear case from the plastic frame. Read through the steps first before attempting the procedure.

⚠ There are two different seams between the screen and the body of the phone:

- *Display panel seam*: This seam is part of the display assembly. **Do not pry** at this seam, or you will separate and damage the display panel.
- *Frame seam*: This is where the plastic frame meets the back cover. It is recessed into the back cover. **Only pry at this seam.**
- There are fourteen clips that hold the frame against the rear case. Be aware of their location as you pry the back cover off in the following steps.

Step 4



- ⓘ As you work, try not to accidentally power on the phone. If you do, turn the phone off before resuming disassembly.
- Place a suction cup near the bottom edge of the display.
- Pull on the suction cup with strong steady force.
- Press the edge of an opening tool straight into the frame seam near the suction cup until the edge wedges between the plastic frame and the back cover's lip.
- ⓘ Due to tight tolerances, this will take substantial force. Using a new opening tool with an unmarred edge will help with this step.
- ⚠ Do not use metal tools, as they will most likely crack the screen.

Step 5



- Once the opening tool's edge is wedged in position, carefully slide the tool along the bottom edge of the phone.
- Carefully guide the opening tool around the left corner of the phone while keeping the tool's edge within the seam.

Step 6



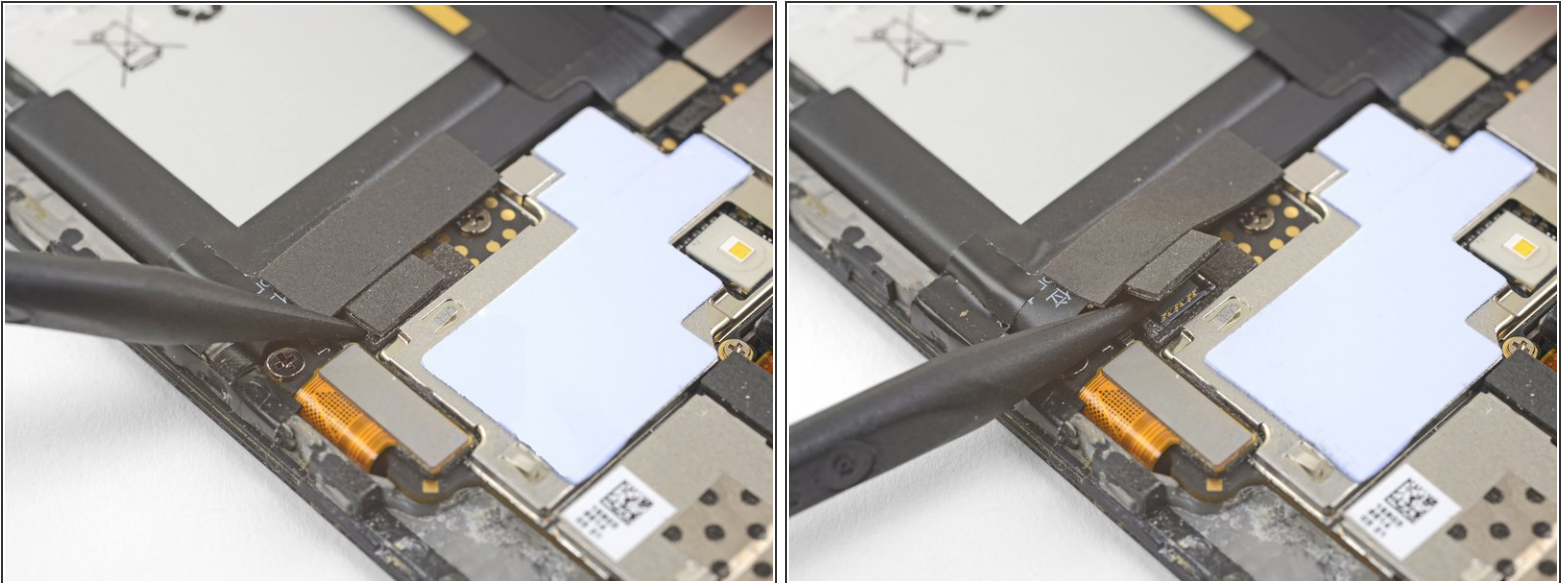
- Continue sliding the opening tool along the long edge, releasing the clips along the way.
- ⓘ The last clip in the top-left corner near the alert switch is recessed and can be difficult to release. Take your time and use the flat end of a spudger or an opening pick to help.

Step 7



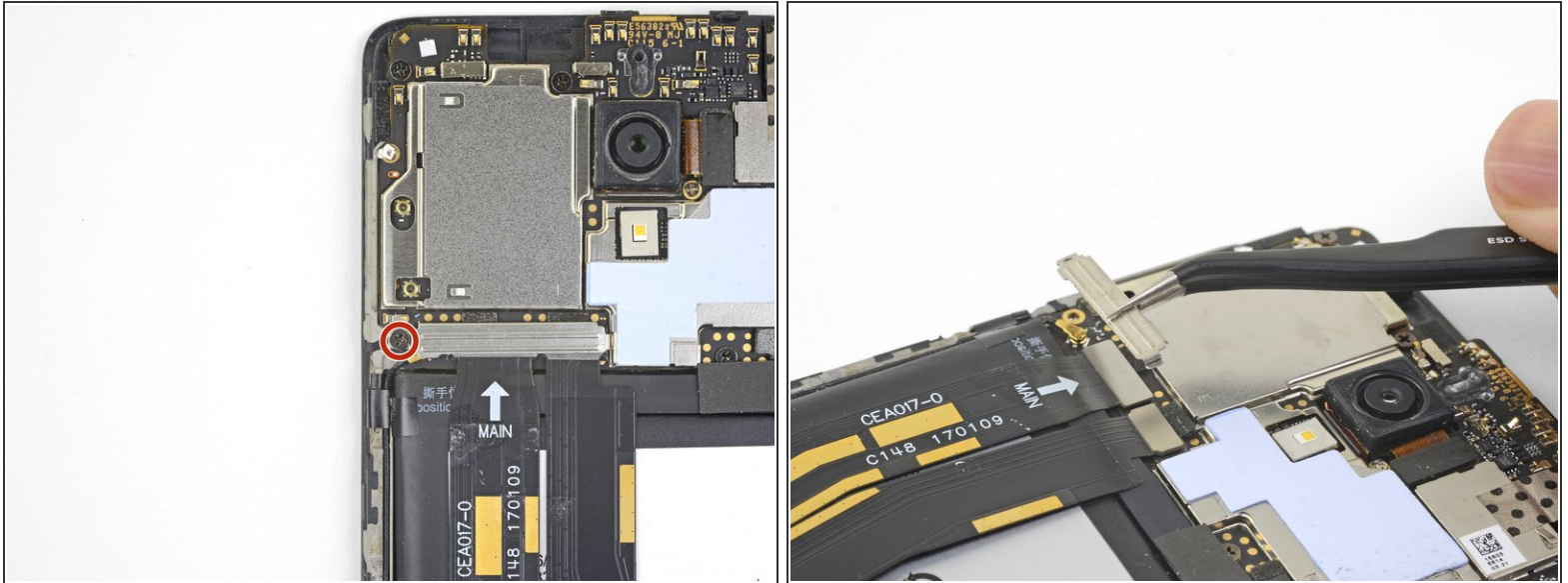
- With the bottom and left edge of the phone freed, gently wiggle the frame to release the top and right edge clips.
 - Lift the screen up and remove it.
- ✦ During reassembly, pause here to test your phone's functionality before securing the back cover.
- ✦ To reinstall the back cover:
- [Align the top edge of the frame](#) to the back cover and ensure that the top clips slip into place.
 - [Squeeze along the long edges of the phone](#) to snap the remaining clips into place.

Step 8 — OnePlus 3 Battery Disconnect



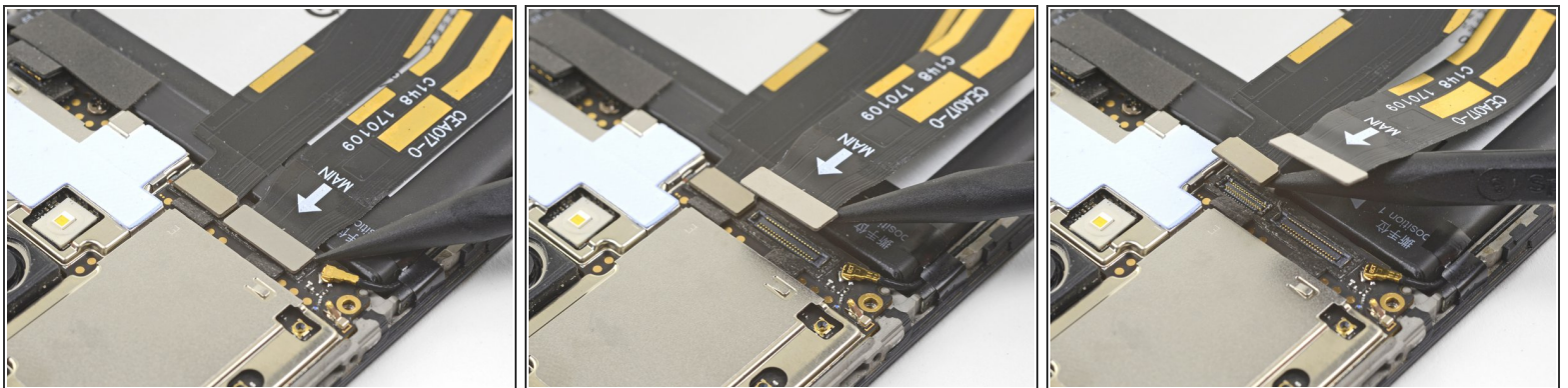
- Use the point of a spudger to pry up and disconnect the battery connector from its socket, located above the top right corner of the battery pack.
 - Bend the connector away from the socket to prevent accidental contact.
- i** To re-attach [press connectors](#) like this one, carefully align and press down on one side until it clicks into place, then repeat on the other side. Do not press down on the middle. If the connector is misaligned, the pins can bend, causing permanent damage.

Step 9 — OnePlus 3 Interconnect Cable Disconnect



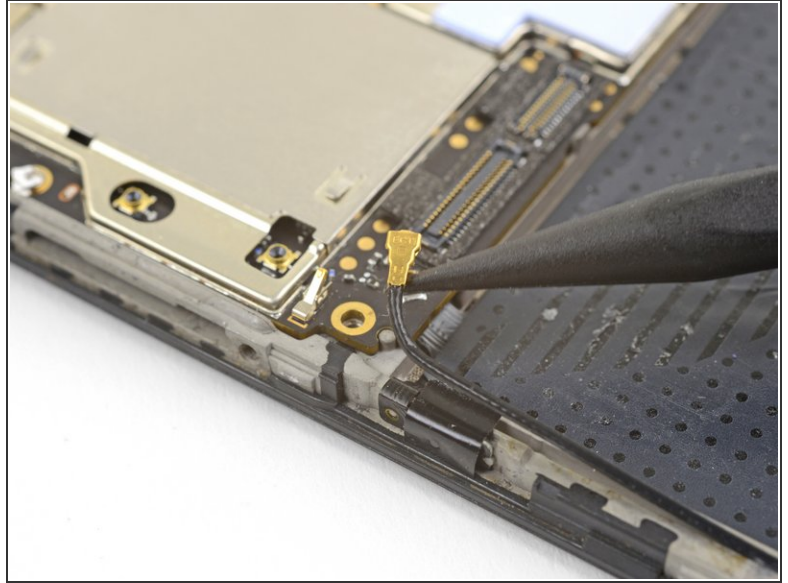
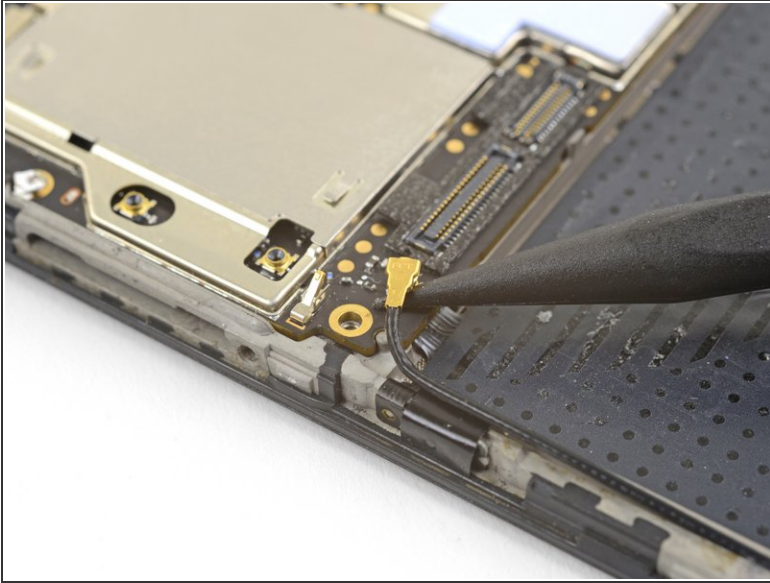
- Remove the 3 mm Phillips screw securing the cable bracket.
- Remove the cable bracket.

Step 10



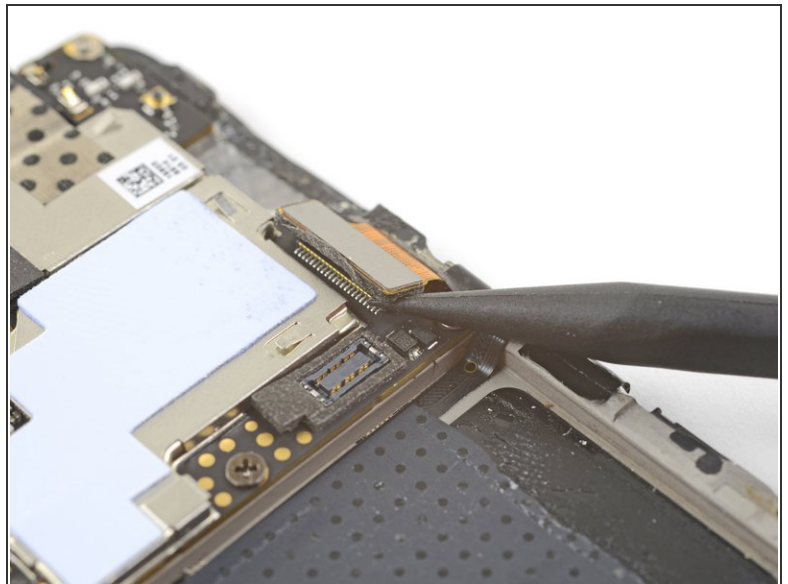
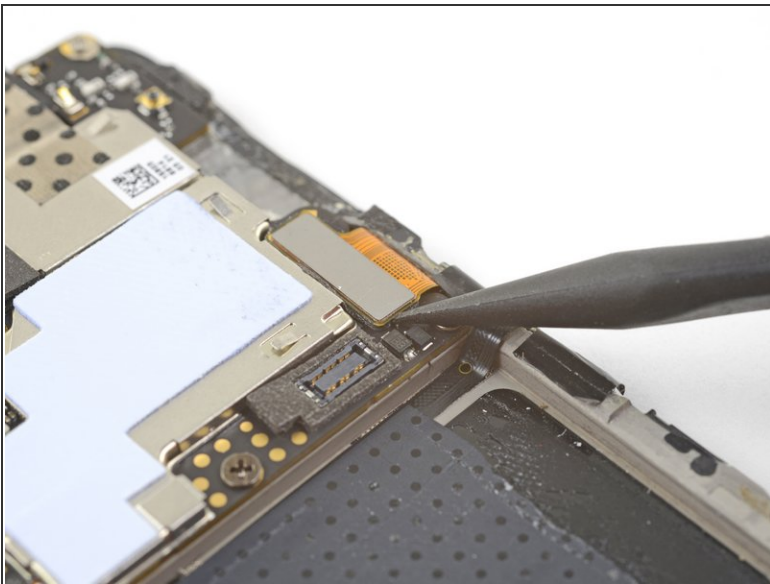
- Use the point of a spudger to pry up and disconnect the interconnect flex cable from the motherboard, which is located above the battery.
- Repeat the process to disconnect the daughterboard flex cable from the motherboard.

Step 11 — Motherboard



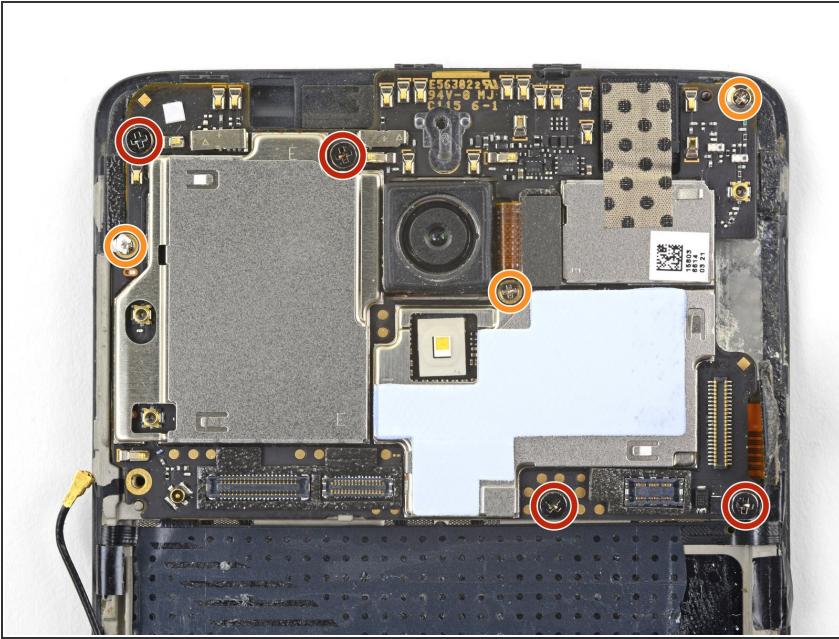
- Slide the point of a spudger underneath the antenna interconnect cable located at the bottom left corner of the motherboard.
- Pry up and disconnect the antenna interconnect cable.

Step 12



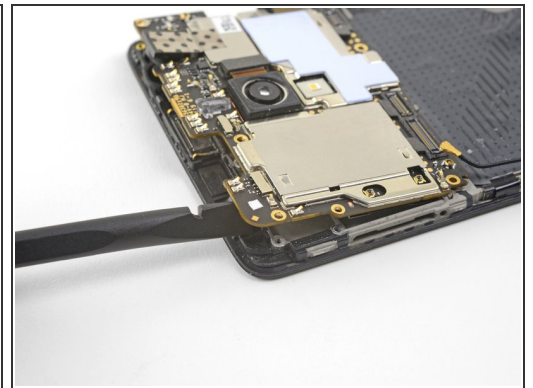
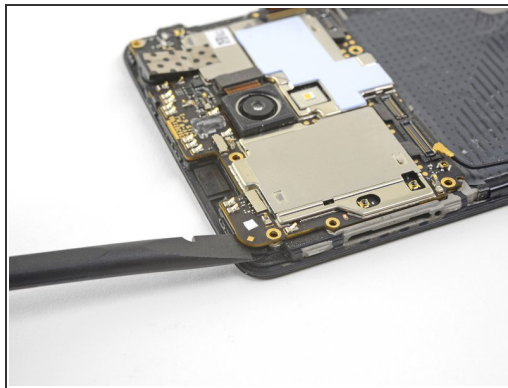
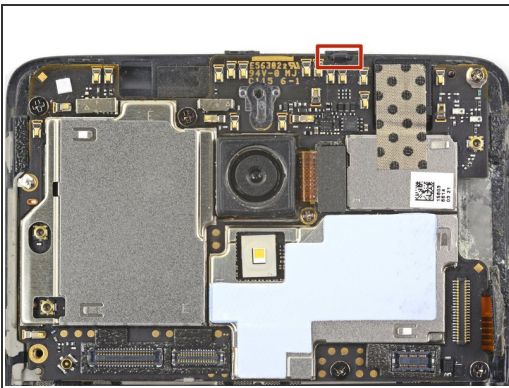
- Use the point of a spudger to pry up and disconnect the display connector from its socket on the motherboard.

Step 13



- Remove the seven Phillips screws securing the motherboard to the frame:
 - Four 3 mm black screws
 - Three 2.9 mm silver screws
- ⓘ Some of these screws may be covered by stickers. Remove the stickers to access the screws.

Step 14



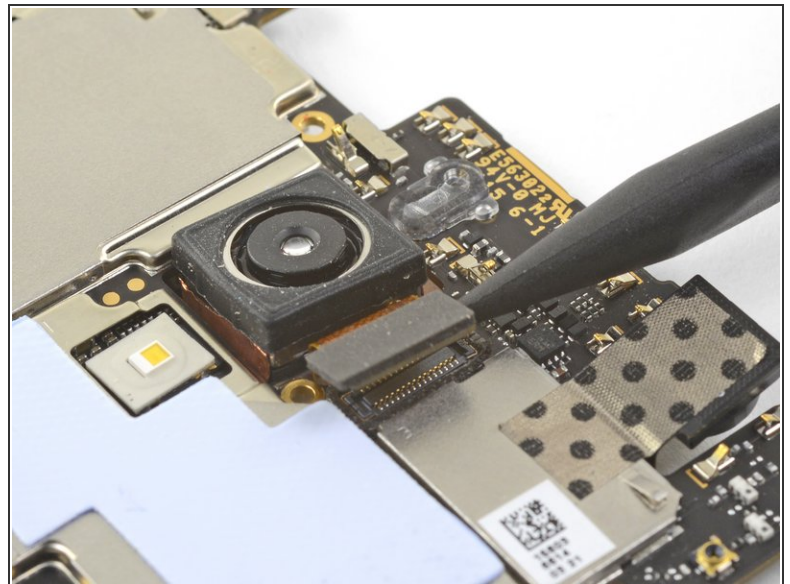
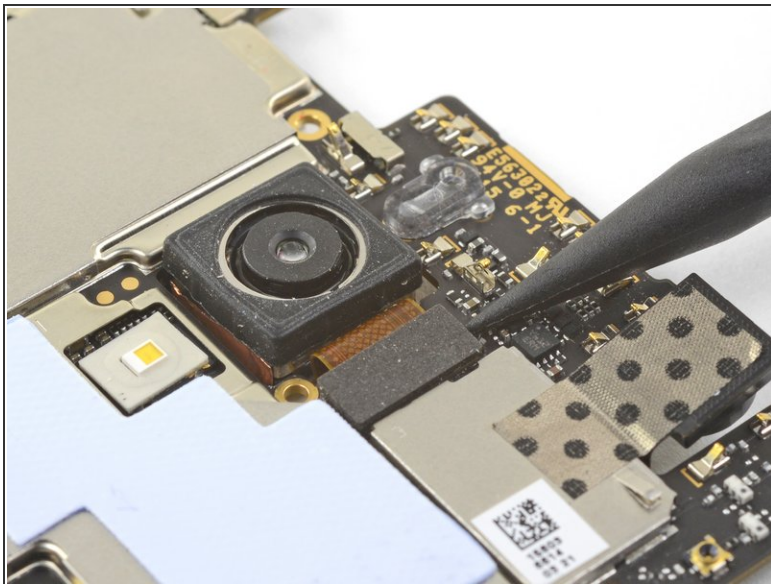
- ⓘ Make sure you have ejected the SIM tray before performing this step.
 - The motherboard is still held in place near the top by clips.
 - Slide the flat end of a spudger underneath the top left corner of the motherboard.
 - Twist the spudger and pry up to release the motherboard from its recess.

Step 15



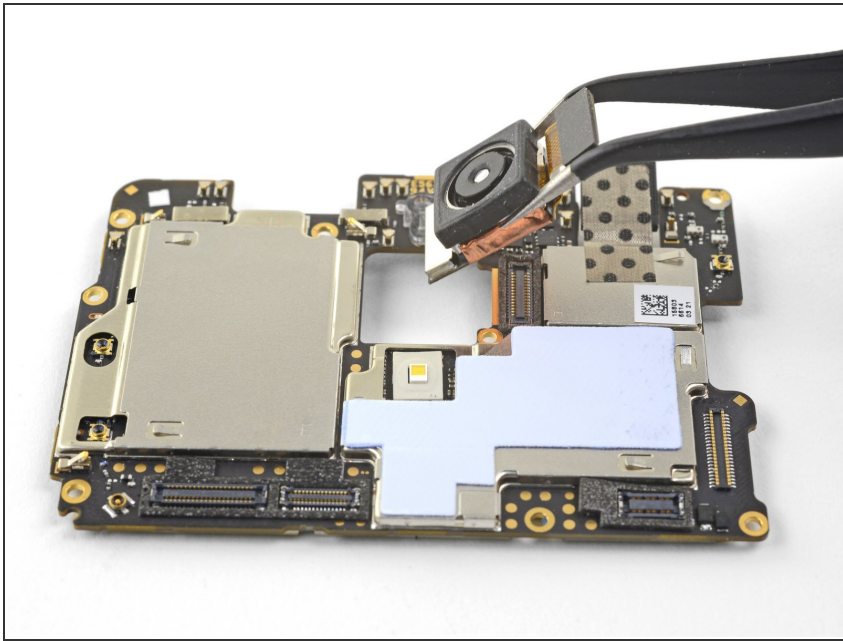
- Remove the motherboard.
- ★ During reinstallation, be careful not to trap any flex cables or antenna cables underneath the motherboard.

Step 16 — Rear-Facing Camera



- Use the point of a spudger to pry up and disconnect the rear-facing camera connector from its motherboard socket.

Step 17



- Remove the rear-facing camera.
- If your replacement part did not come with a black cover, carefully peel the cover off from your old camera and transfer it to your replacement part.

To reassemble your device, follow these instructions in reverse order.

Take your e-waste to an [R2 or e-Stewards certified recycler](#).

Repair didn't go as planned? Check out our [OnePlus 3 Answers community](#) for troubleshooting help.