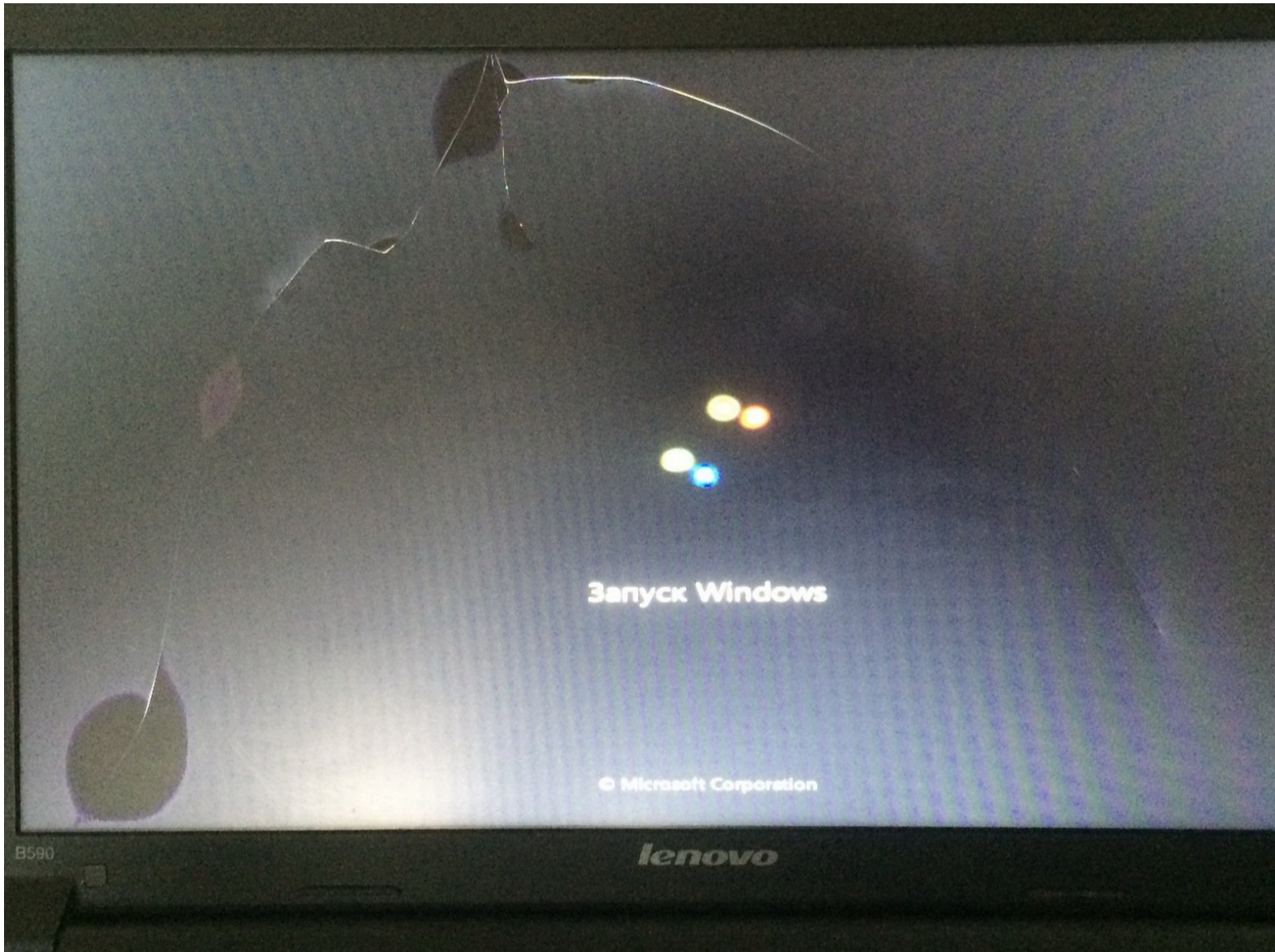


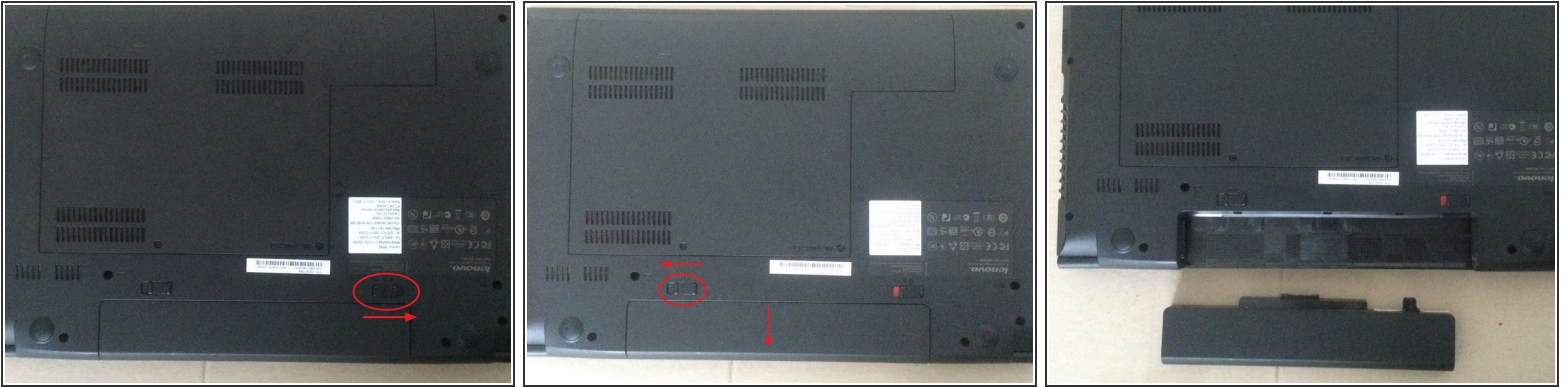


# Lenovo Laptop b590 LCD Replacement

Written By: Pavel Amelyanenko



## Step 1 — Remove the battery



- Pull right trigger and unlock the battery.

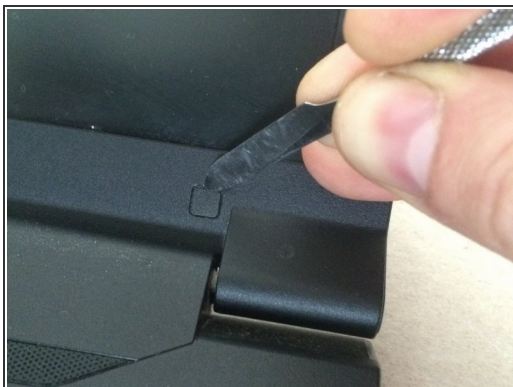
## Step 2



- Insert Wisdom here

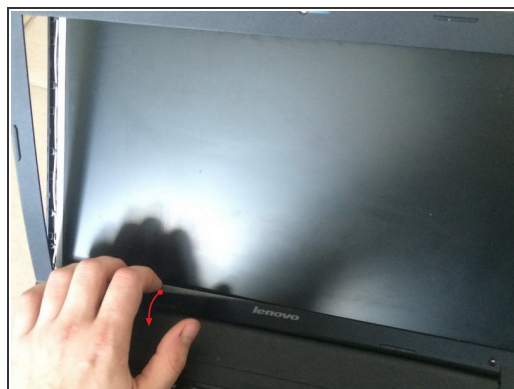
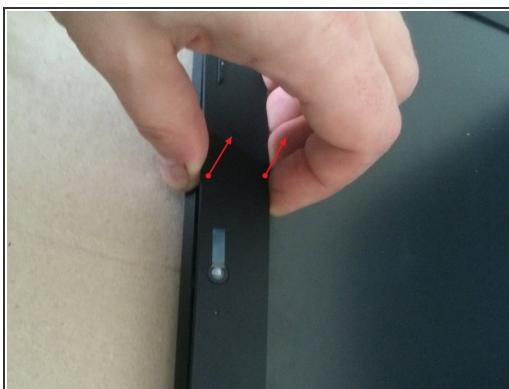


### Step 3



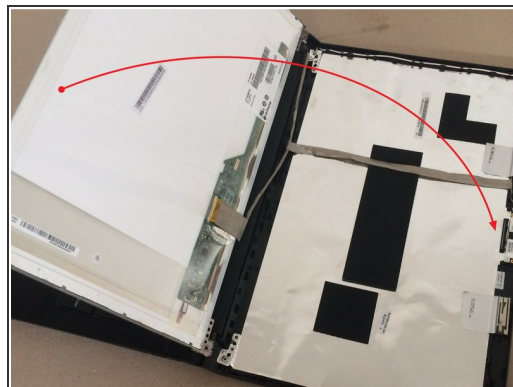
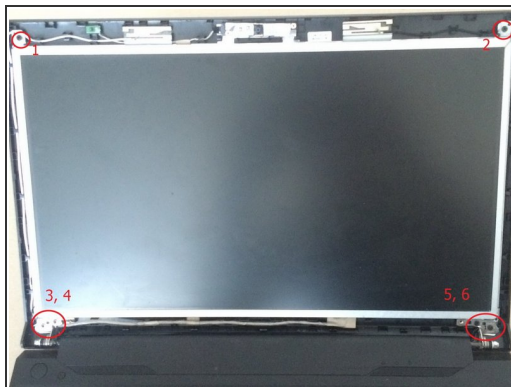
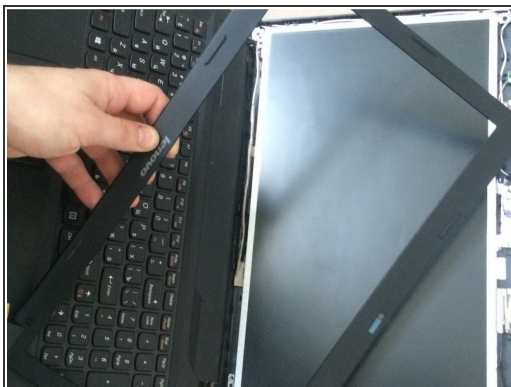
- Insert wisdom here

### Step 4



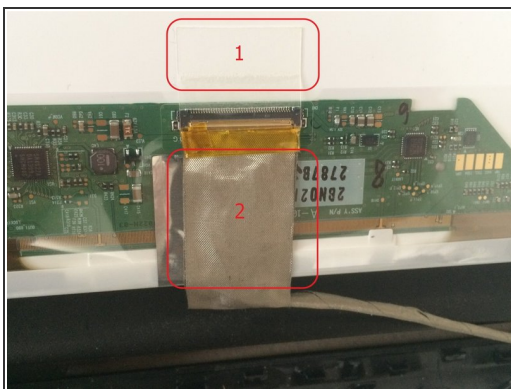
- Insert wisdom here

## Step 5



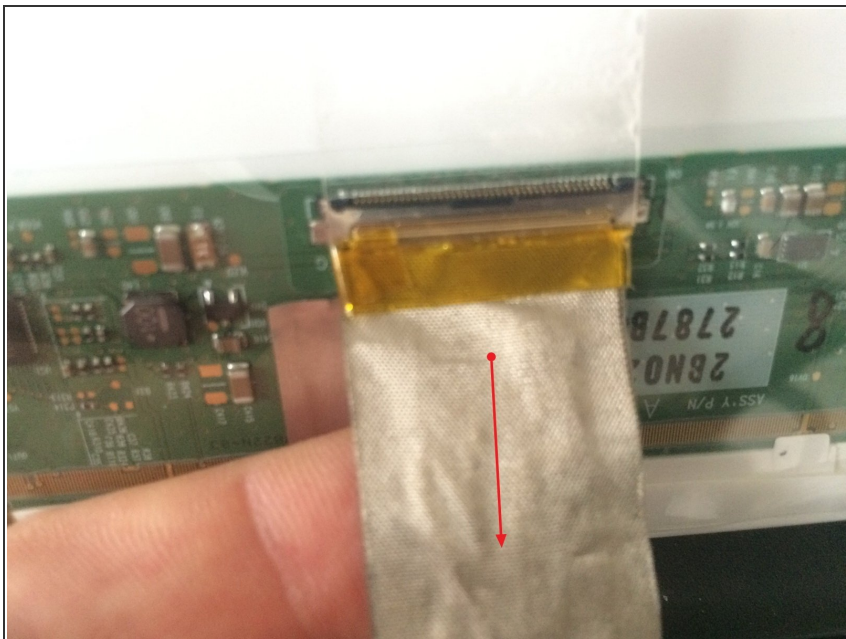
- Insert wisdom here

## Step 6



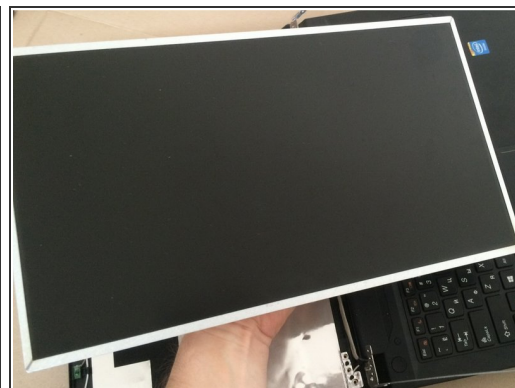
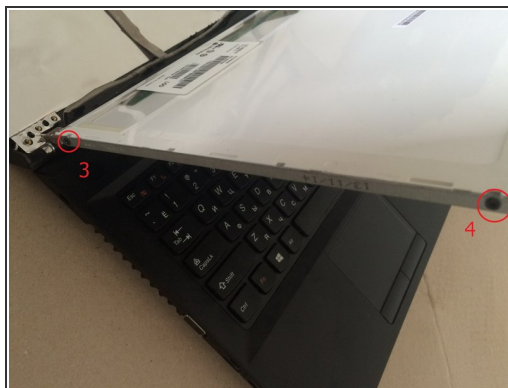
- Insert wisdom here

## Step 7



- Insert wisdom here

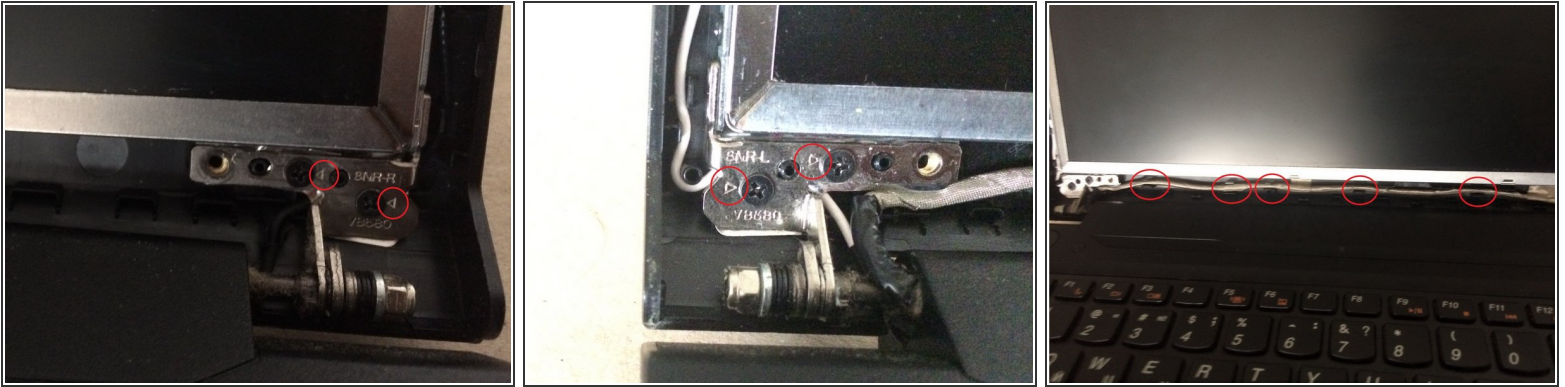
## Step 8



- Insert wisdom here

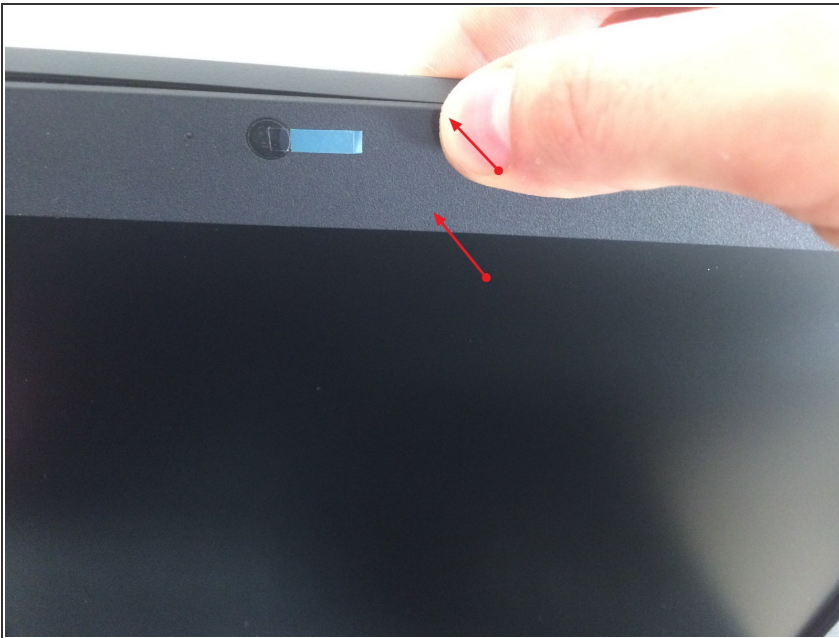


## Step 9



- Insert wisdom here

## Step 10



- Insert wisdom here

To assemble the device, follow the instructions in reverse order.