



Vizio VTAB1008 Front Facing Camera Replacement

After this guide is completed the front-facing camera and light sensor board of the Vizio VTAB1008 will be replaced.

Written By: Gilberto Ambriz



INTRODUCTION

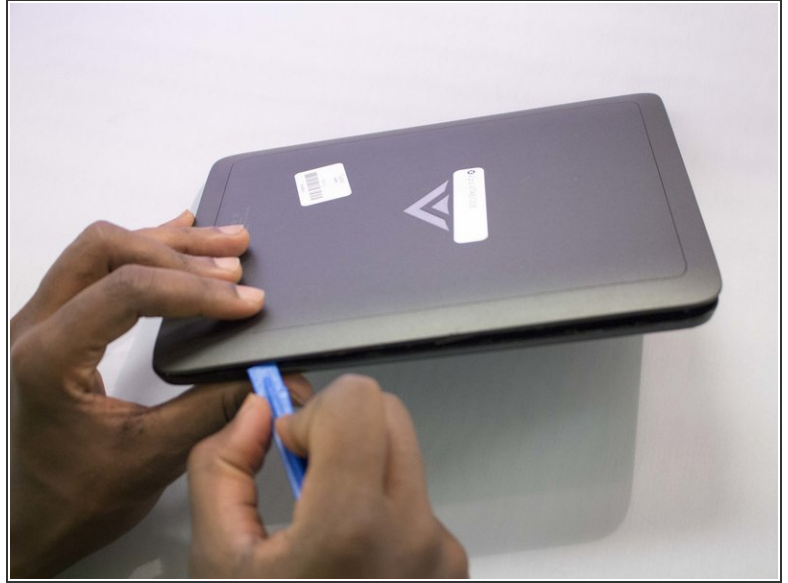
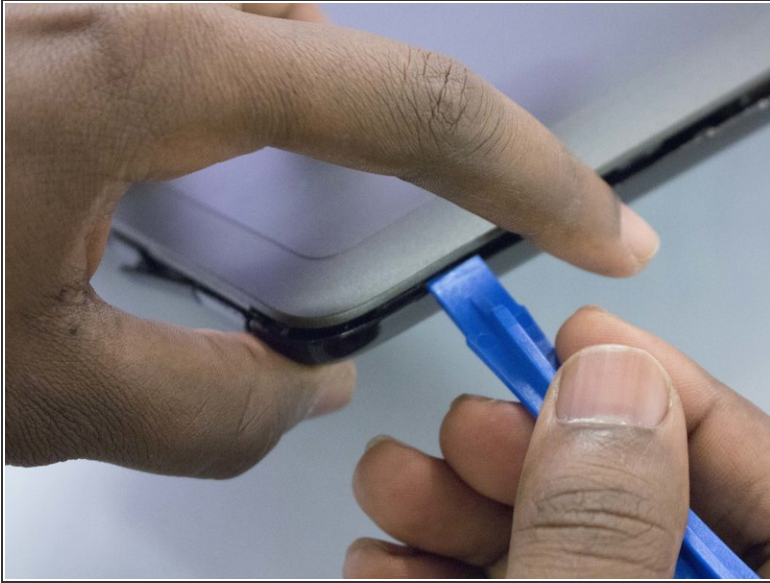
Hello! This is a guide on how to replace the front-facing camera and light sensor in your Vizio VTAB1008.



TOOLS:

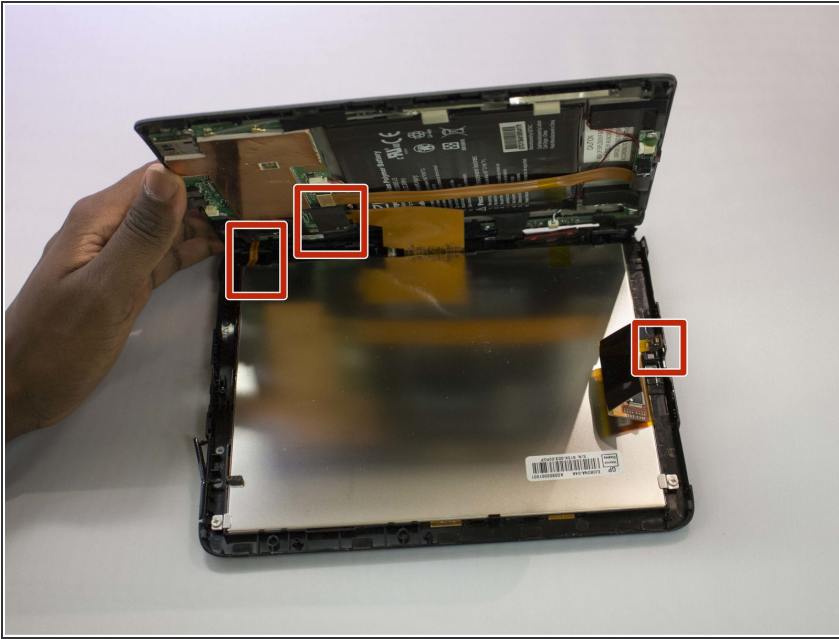
- [iFixit Opening Tool](#) (1)
 - [JIS Driver Set](#) (1)
-

Step 1 — Vizio VTAB1008 Back Cover Removal



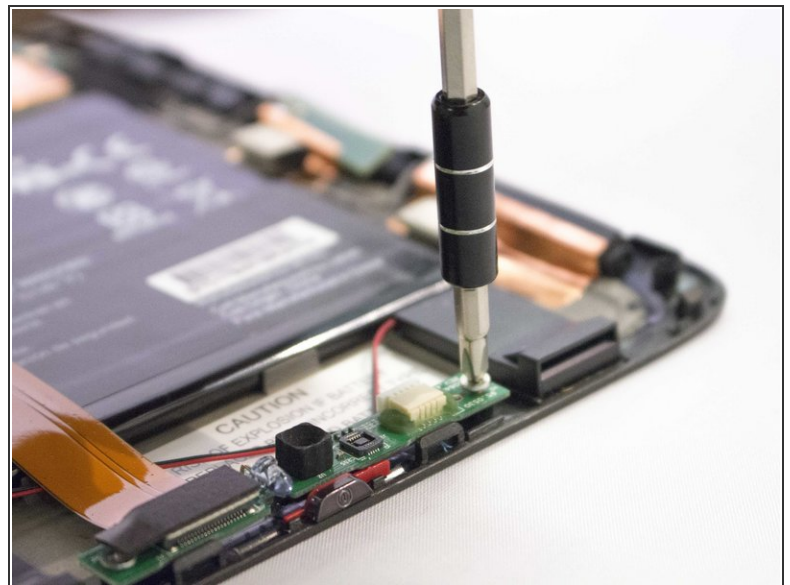
- Carefully slide the heavy duty opening tool between the gap on the side of the device with no buttons.
- ⓘ Do not insert the opening tool too far into the tablet as this can damage connectors close to edges of the cover.
- ⓘ The angled tip of the opening tool can be wedged into the device by pressing on the back of the opening tool with the thumb. Move the opening tool in a sliding motion to ensure all tabs separate.
- Corner tabs may require a more forceful prying tool. If needed, carefully insert the metal prying tool into corners to separate the tabs.

Step 2



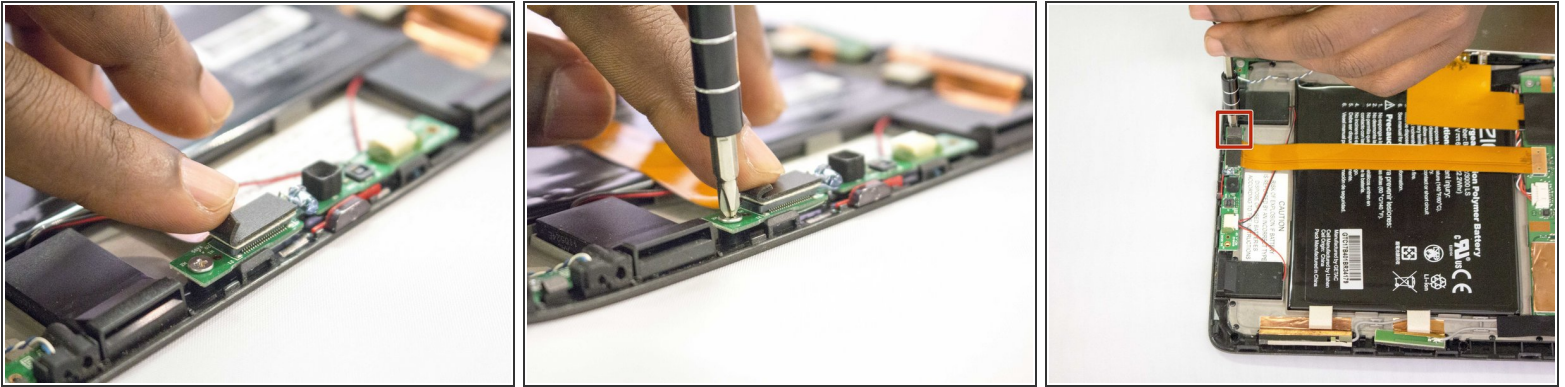
- Look into the tablet for loose connectors.
- ❗ There are three loose connectors: one for the screen, one for the digitizer, and one for the motherboard. They are held in place by the pressure of the backing and screen assemblies.
- Flip the backing from the button-less side over, being careful not to separate the ribbon connector from the display screen.

Step 3 — Front Facing Camera and Light Sensor Board



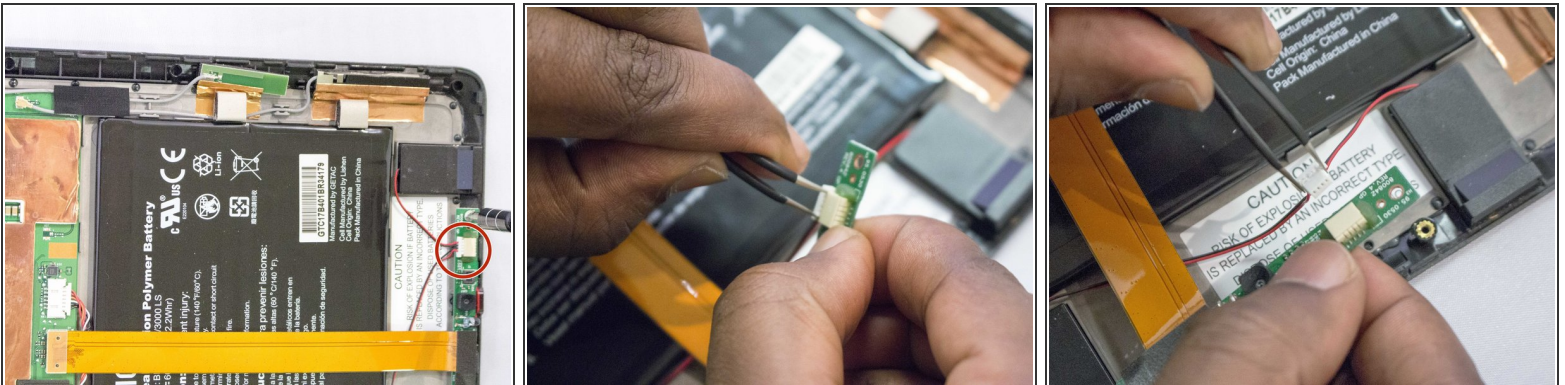
- Remove the screw with the J1 screwdriver or screw bit.
- ❗ The screw has a 3.66 mm head and is 3.5 mm tall.

Step 4



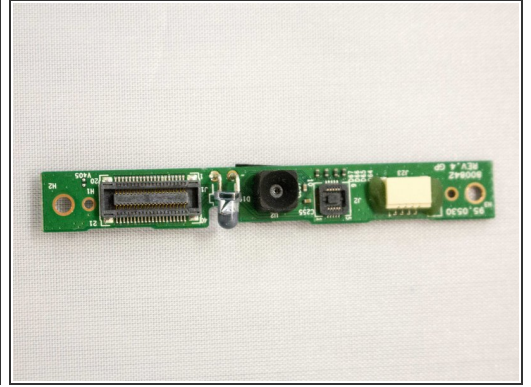
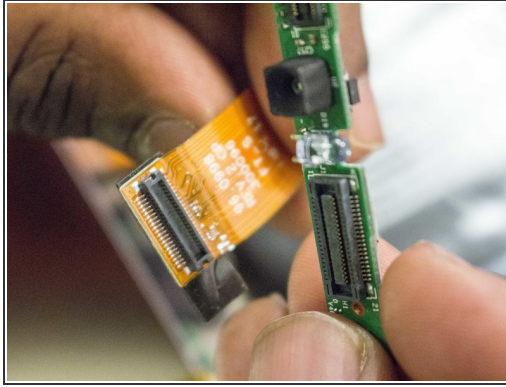
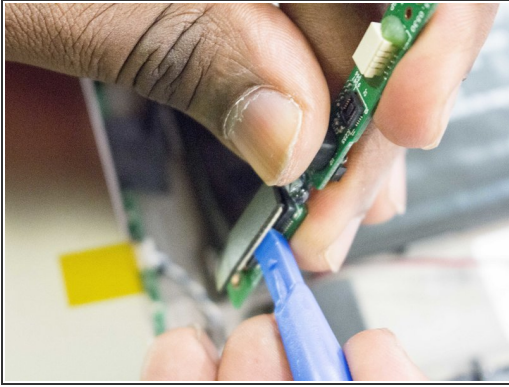
- Lift the flap hiding the second screw.
- Remove the screw by using the J1 screwdriver.
- ⓘ The screw has a 3.66 mm head and is 3.5 mm tall.

Step 5



- Disconnect the black and red cable connector from the camera strap.
- ⓘ Using tweezers may help to grab the small connector flanges.

Step 6



- Disconnect the ribbon cable from the camera circuit board by lifting it away from the circuit board.

 A spudger may help with leverage when removing the ribbon cable.

To reassemble your device, follow these instructions in reverse order.