



# Plasma Ball Teardown

The process of breaking down and rebuilding a Plasma Ball.

Written By: Payton Harty

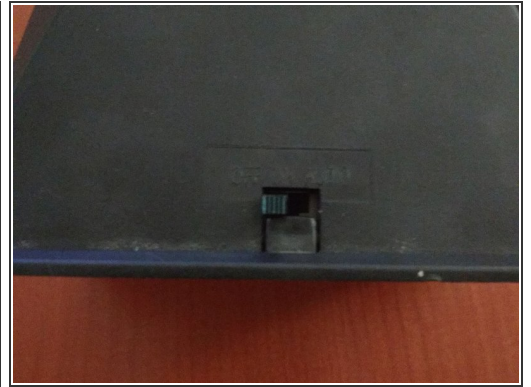




## TOOLS:

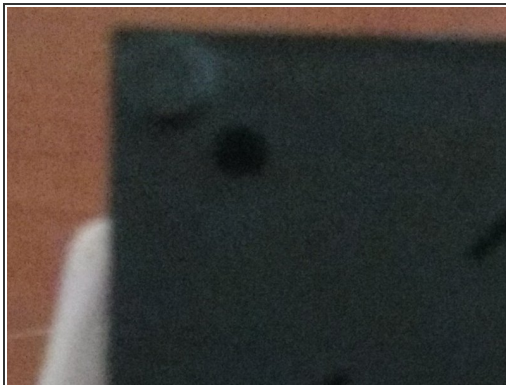
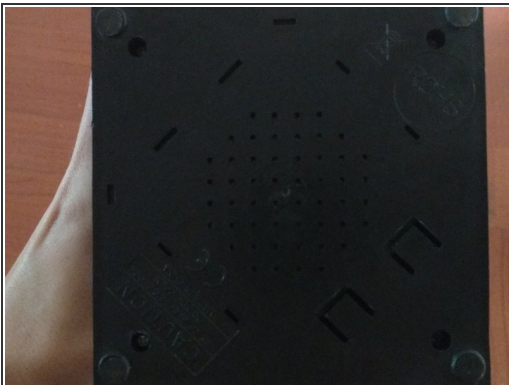
- [Phillips #0 Screwdriver](#) (1)
-

## Step 1 — Safety Procedures



- Obtain your plasma ball and unplug the wire (If battery operated take out battery's).
- Turn the Off/On/Sound switch to Off.

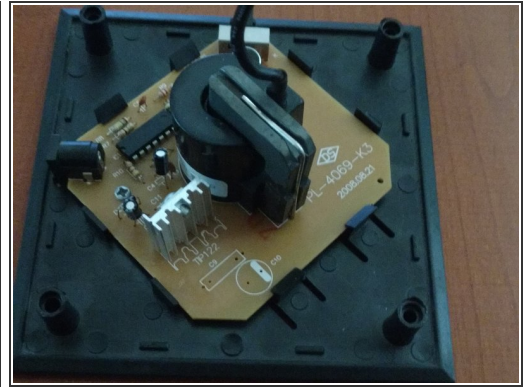
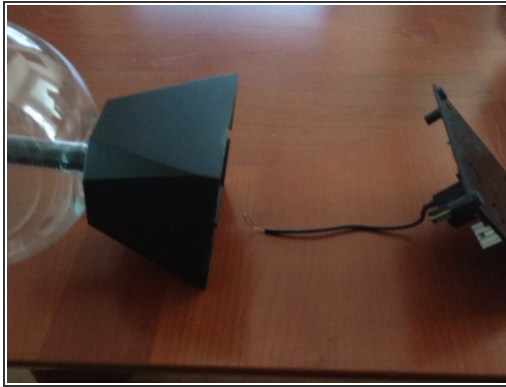
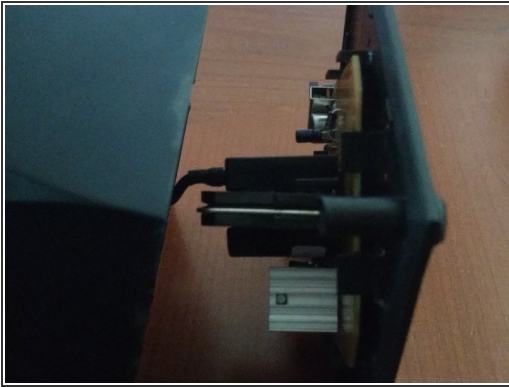
## Step 2 — Unscrew The Base



- Flip over the plasma ball ( Be careful if putting on a table, its glass its easily broken)
- Unscrew the 4 screws, one in each corner of the mechanism.

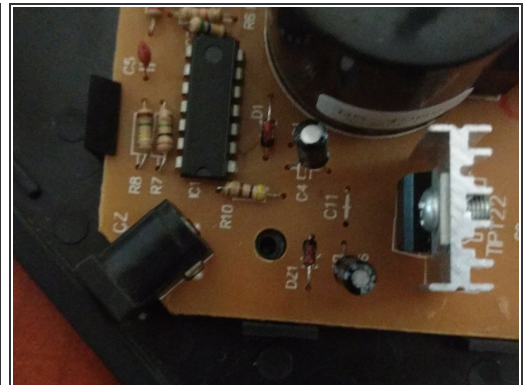
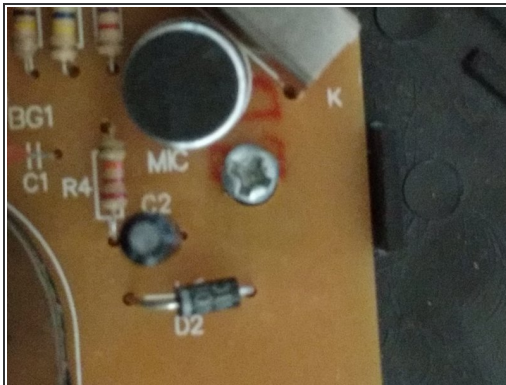
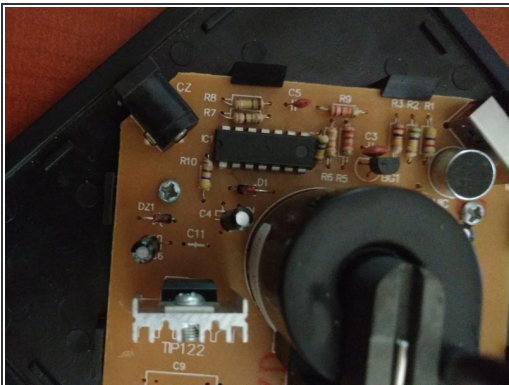


### Step 3 — Pull the Base Apart



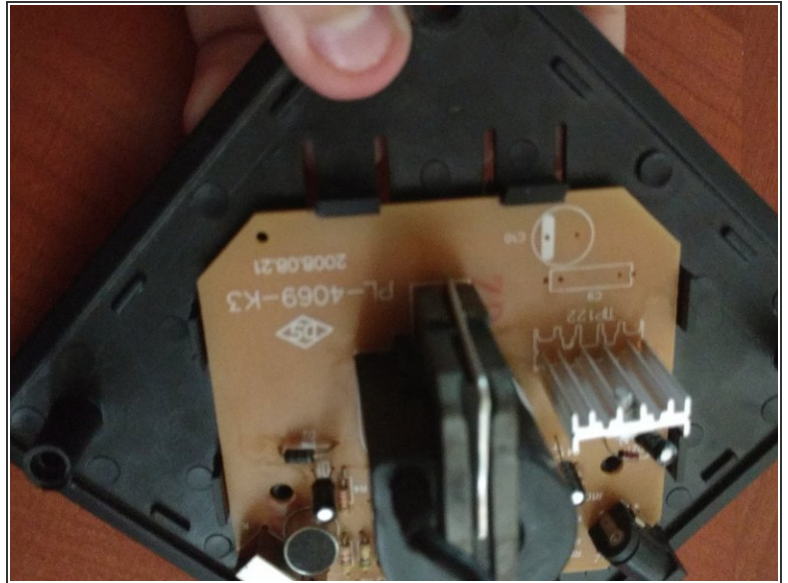
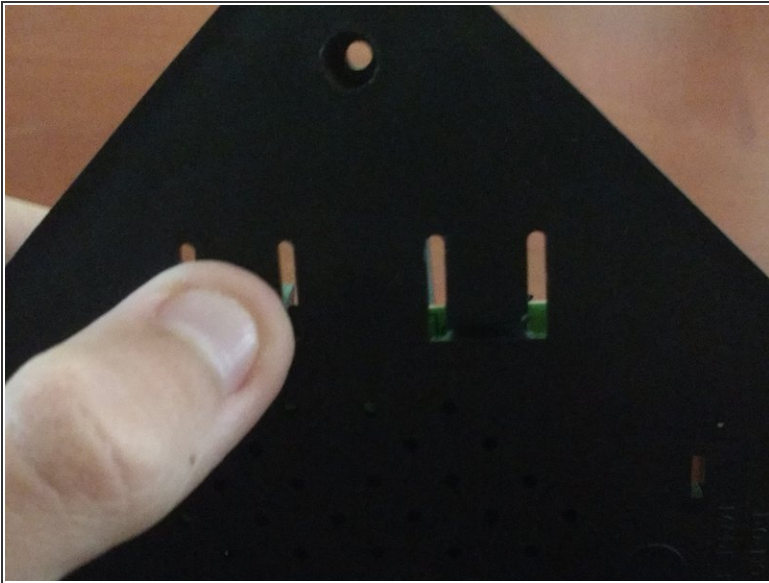
- Carefully pull apart the base from the main body,
- Now we have the base and the main panel.

### Step 4 — Unscrew The Main Panel



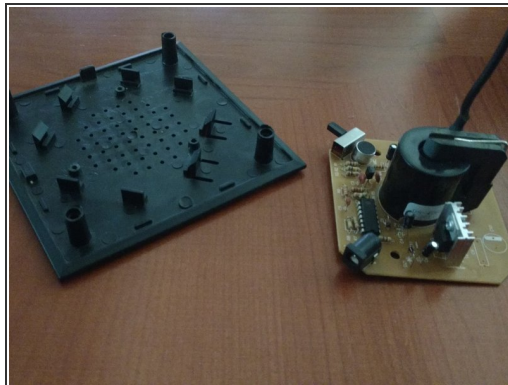
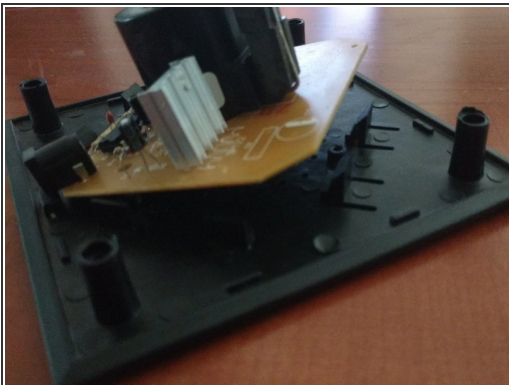
- Unscrew the two screws that hold the base to the control center.

## Step 5 — Pop Out The Main Panel



- Next pop out the control center by pushing on these two plastic holders.

## Step 6 — Remove The Main Panel



- Pull the control center off the base and you are done with the teardown
- To rebuild the Plasma Ball do all the steps in reverse order.