



# iHome iP1 Motherboard Replacement

Replace the motherboard on your iHome iP1.

Written By: Sachin Sheno



## INTRODUCTION

Use this guide to replace your iHome iP1's damaged or faulty motherboard. The motherboard is located on the back of your iHome iP1 and is protected by its back cover. Although the motherboard connects all of the electronic parts in the iHome iP1, it is relatively simple to remove.



### TOOLS:

- [Phillips #2 Screwdriver](#) (1)
  - [Phillips #1 Screwdriver](#) (1)
-

## Step 1 — Back Cover



- Orient the iHome upside down with the speakers facing away from you.

## Step 2



- Remove the four 9.5 mm Phillips #2 screws located on each of the four corners of the iHome's back cover.

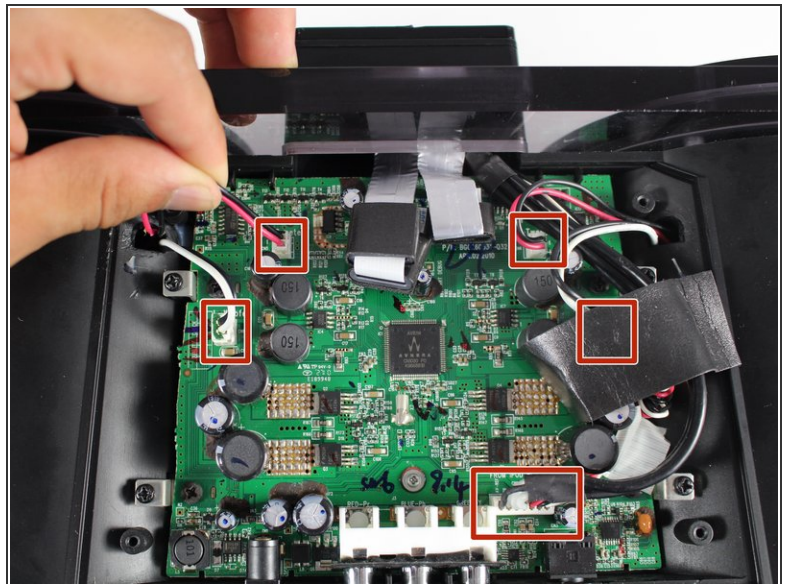
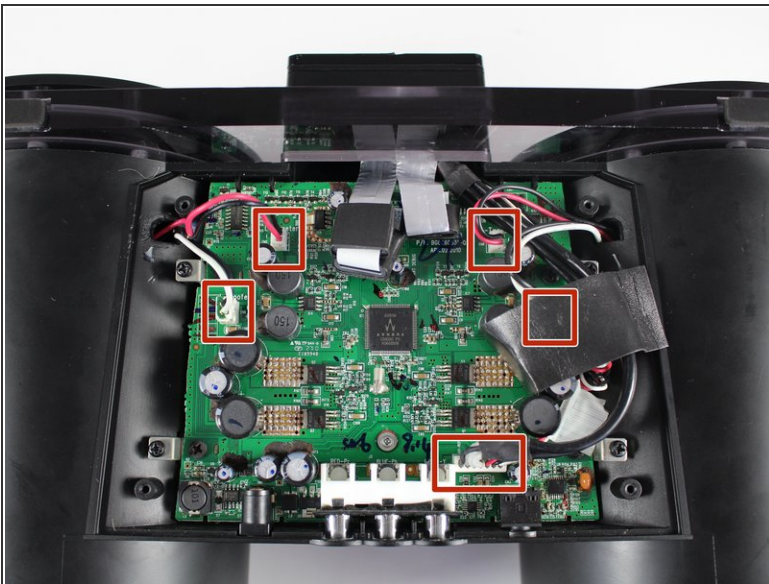


## Step 3



- Remove the back cover by grabbing its sides and lifting it off the iHome.

## Step 4 — Motherboard



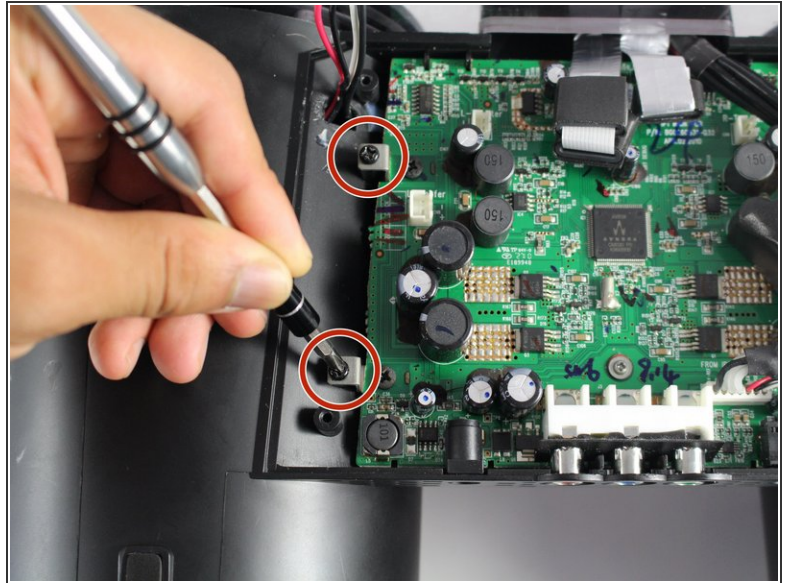
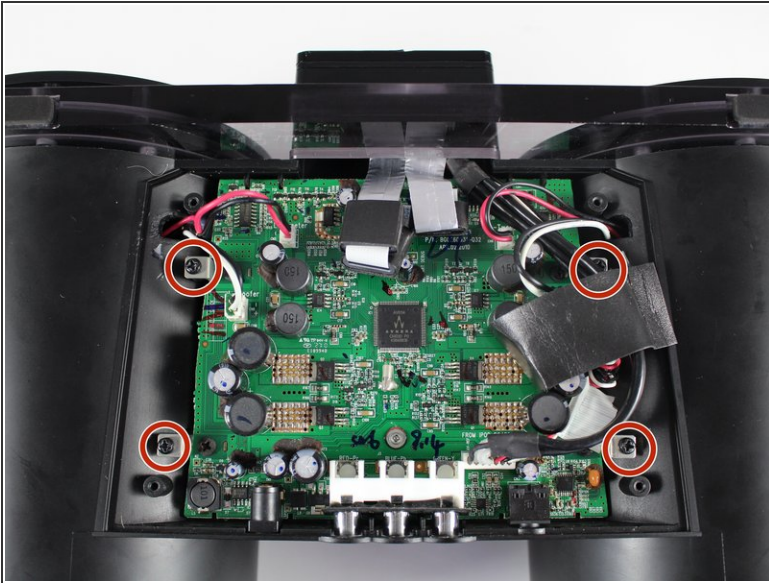
- Disconnect all five wire bundles attached to the motherboard by pulling them away from their connection.

**i** The order in which the wire bundles are removed does not matter.

**i** You may need to remove some black foam tape in order fully disconnect some of the wires.

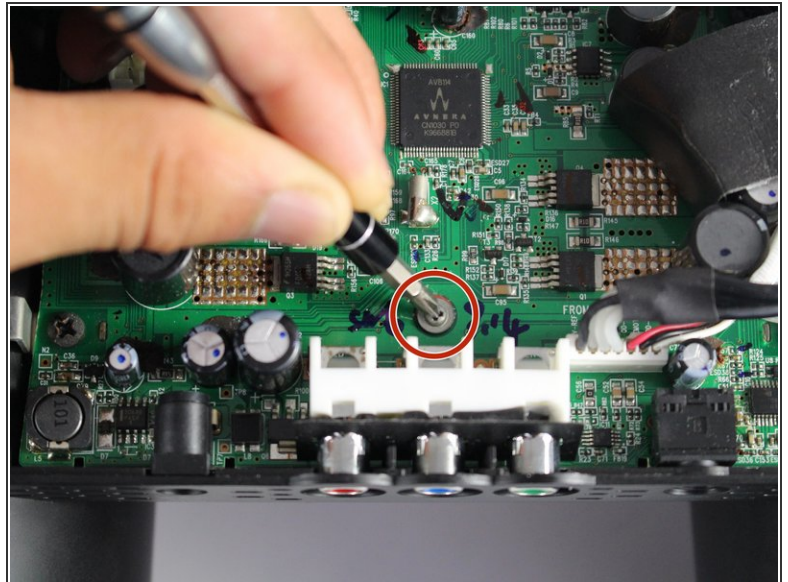
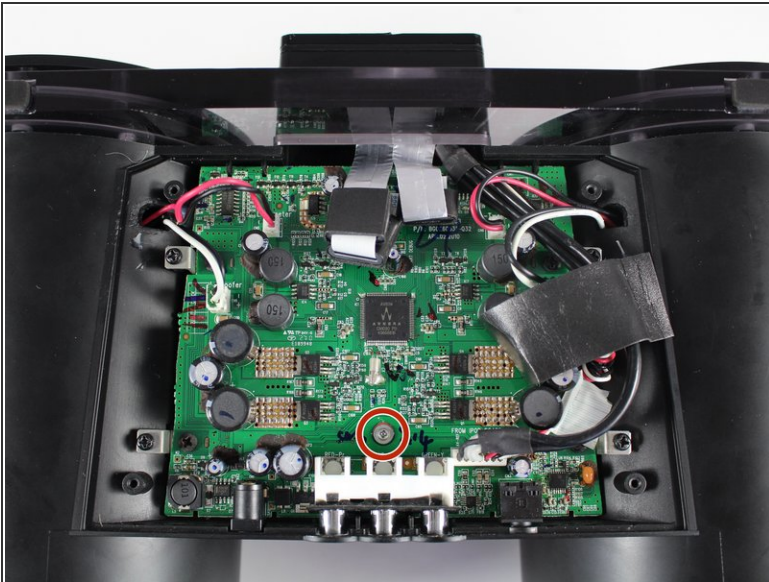
This document was generated on 2020-11-13 05:24:14 PM (MST).

## Step 5



- Unscrew the four 9.5 mm Phillips #2 screws on the four metal brackets located at each corner of the motherboard.

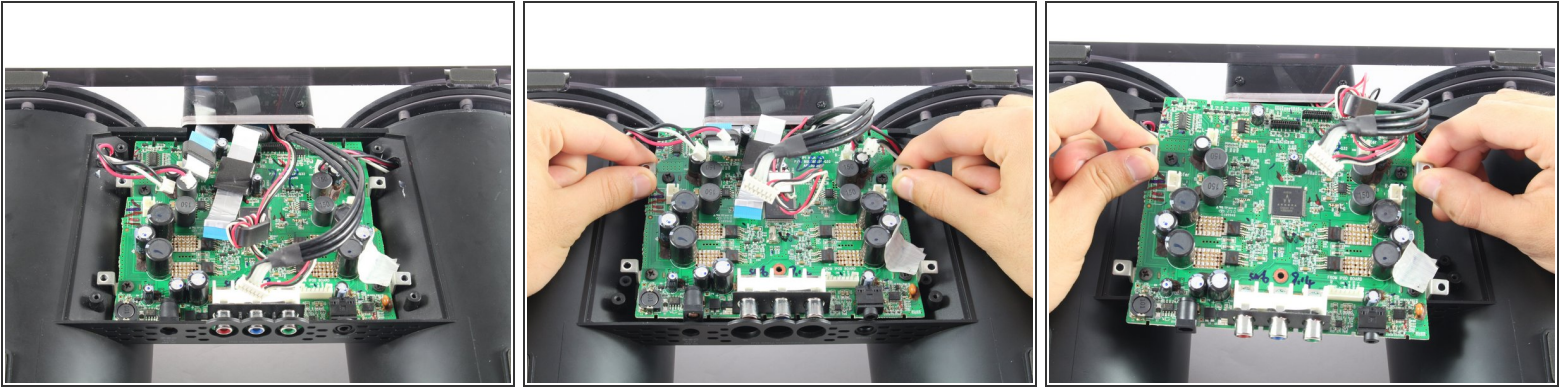
## Step 6



- Unscrew the grey 6.0 mm Phillips #1 screw directly above the red, blue, and green component ports.



## Step 7



- Remove the motherboard from its housing by grabbing it near its edges and carefully pulling it upward.

To reassemble your device, follow these instructions in reverse order.