



Braven BRV-HD Power Button Replacement

The following step-by-step guide will show how...

Written By: Matthew Nguyen



INTRODUCTION

The following step-by-step guide will show how the power button can be located and replaced. The Braven BRV-HD Battery Replacement is a prerequisite for this guide.

TOOLS:

[Pro Tech Toolkit](#) (1)

[2mm Hex Key](#) (1)

[J1 Screwdriver Bit](#) (1)

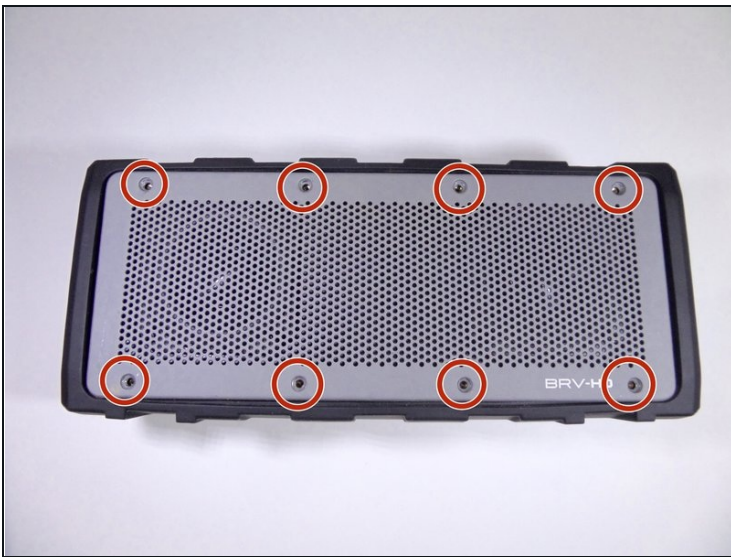
[Phillips #00 Screwdriver](#) (1)

[iFixit Opening Tool](#) (1)

[Heat Gun](#) (1)

[Spudger](#) (1)

Step 1 — Battery



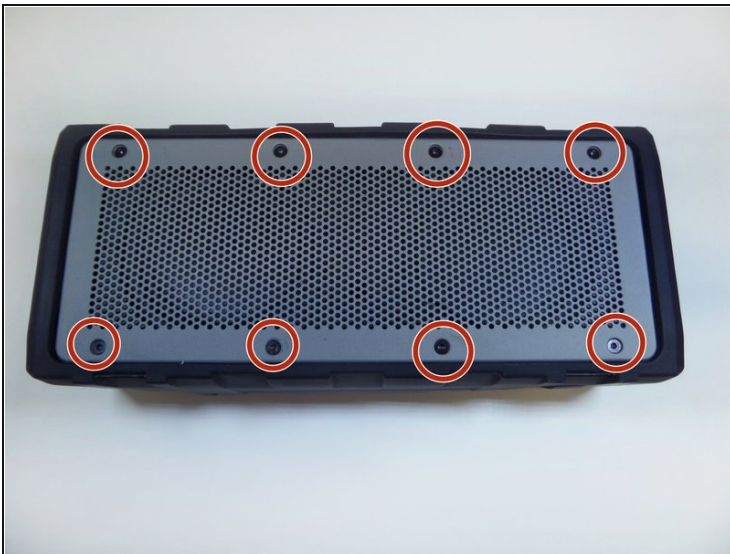
- Placing the device on its back with the BRV-HD logo facing up, remove the eight 5mm hexagon 2.0 screws on the front panel.
- ① Make sure the device is turned off before starting.

Step 2



- Lift the front panel off of the speaker using a plastic opening tool.

Step 3



- Placing the device with the back panel facing up, remove the eight 5mm hexagon 2.0 screws from the back panel.

Step 4



- Lift the back panel off of the device with a plastic opening tool.

Step 5



- Turning the device on its side, unscrew the four 15mm hexagon 2.0 screws on the charging port panel.

Step 6



- Remove the outer rubber flap and the plastic side port panel.

Step 7



- Place the device on its front.
- Loosen the four 12mm Phillips screws in the four corners with a J1 screwdriver.
- Loosen the two 8mm Phillips screws in the center with a J1 screwdriver.
- ① These screws are difficult to reach and will require a screwdriver extension piece.

Step 8



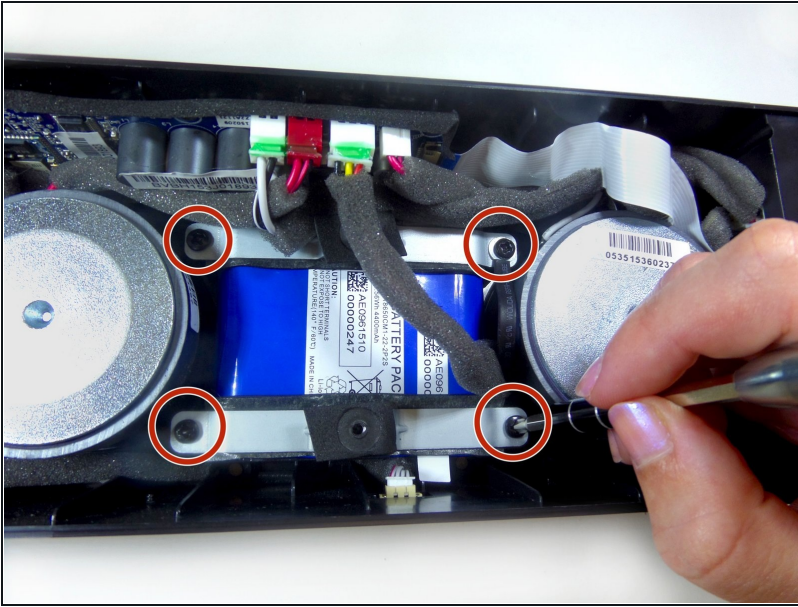
- Pull off the rubber sleeve surrounding the speaker using your hands.
- ① There is adhesive binding the sleeve to the speaker and force will be required to remove the sleeve.

Step 9



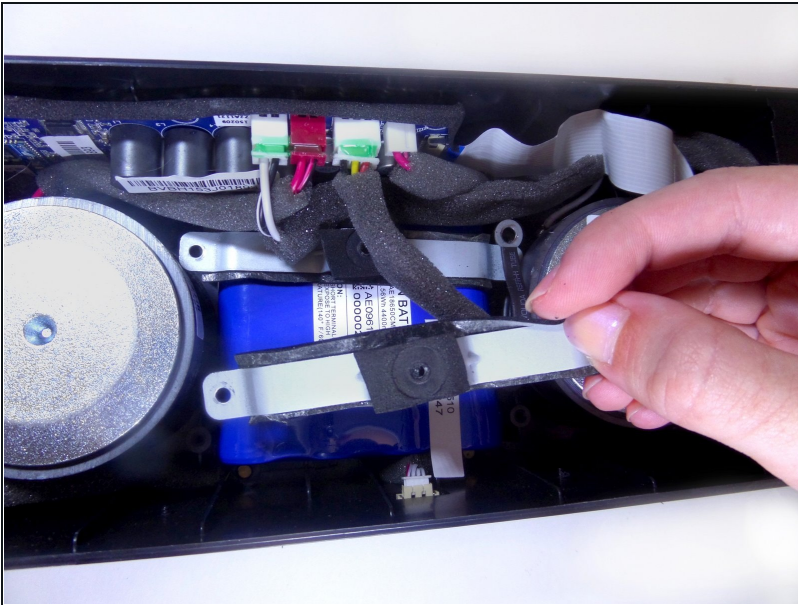
- Lift the black covering off of the speaker using both hands.
- ① Loose screws that you were unable to remove with the screwdriver will be removed when you lift off the black covering.

Step 10



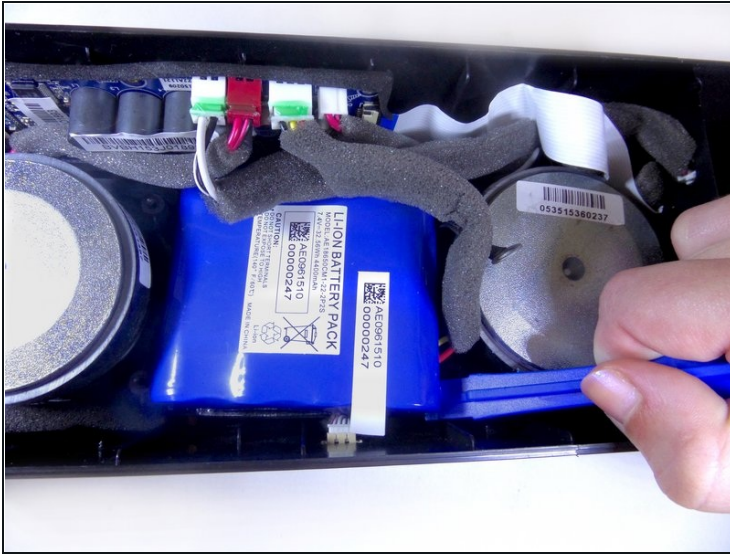
- Remove the four 12mm Phillips screws securing the two battery brackets with a J1 screwdriver.
- ① Move any wires aside to have better access to the screws securing the battery.

Step 11



- Remove the two brackets that hold down the battery using your hands.

Step 12



- Use the plastic opening tool to lift up the battery.
- Remove the battery using your hands.
- ① The wires connecting the battery to the motherboard are still plugged in. Avoid pulling on the battery or these wires may break.

Step 13



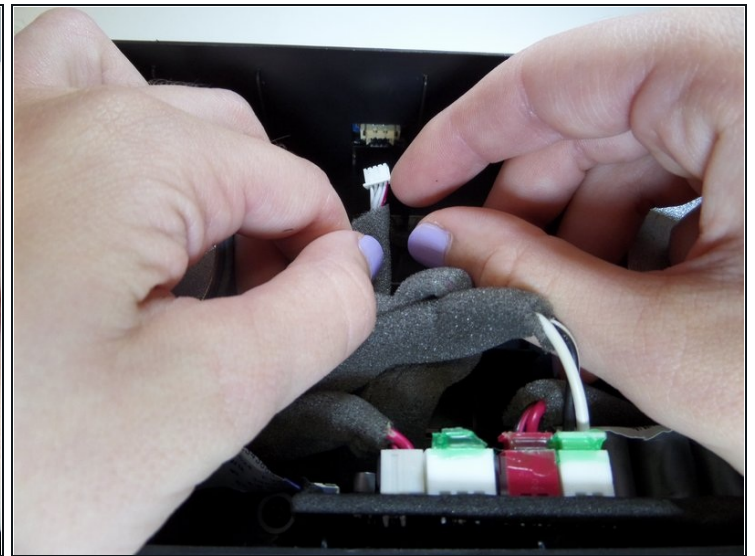
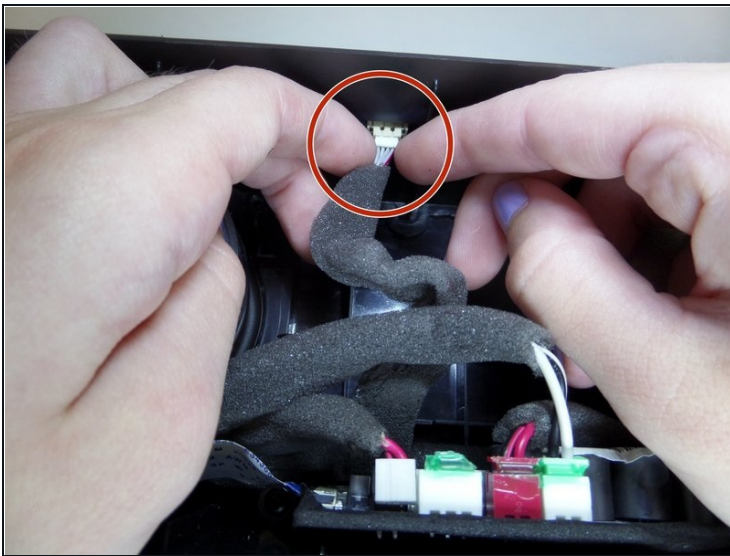
- Disconnect the wire attaching the battery to the motherboard.
- ① There is green glue on the wire ports preventing the wires from falling out. Peel and remove this glue as necessary.
- ⚠ Be careful when pulling out the wires from their ports. The metal stems attached to the ports can break. A spudger or [tweezers](#) may help.

Step 14 — Power Button



- Place the device so the blue button panel is facing up, and use a J00 Phillips J1 head screw driver to remove the two 7mm Phillips head screws on either side of the button panel.

Step 15



- Unplug the wire on the inside of the device that connect to the button panel.

⚠ The wires are fragile. Do not use excessive force when unplugging the wires from the panel.

Step 16



- Pry the button panel off of the speaker using a nylon spudger.
- ⓘ A heat gun may be necessary to detach the button panel from the device.

To reassemble your device, follow these instructions in reverse order.