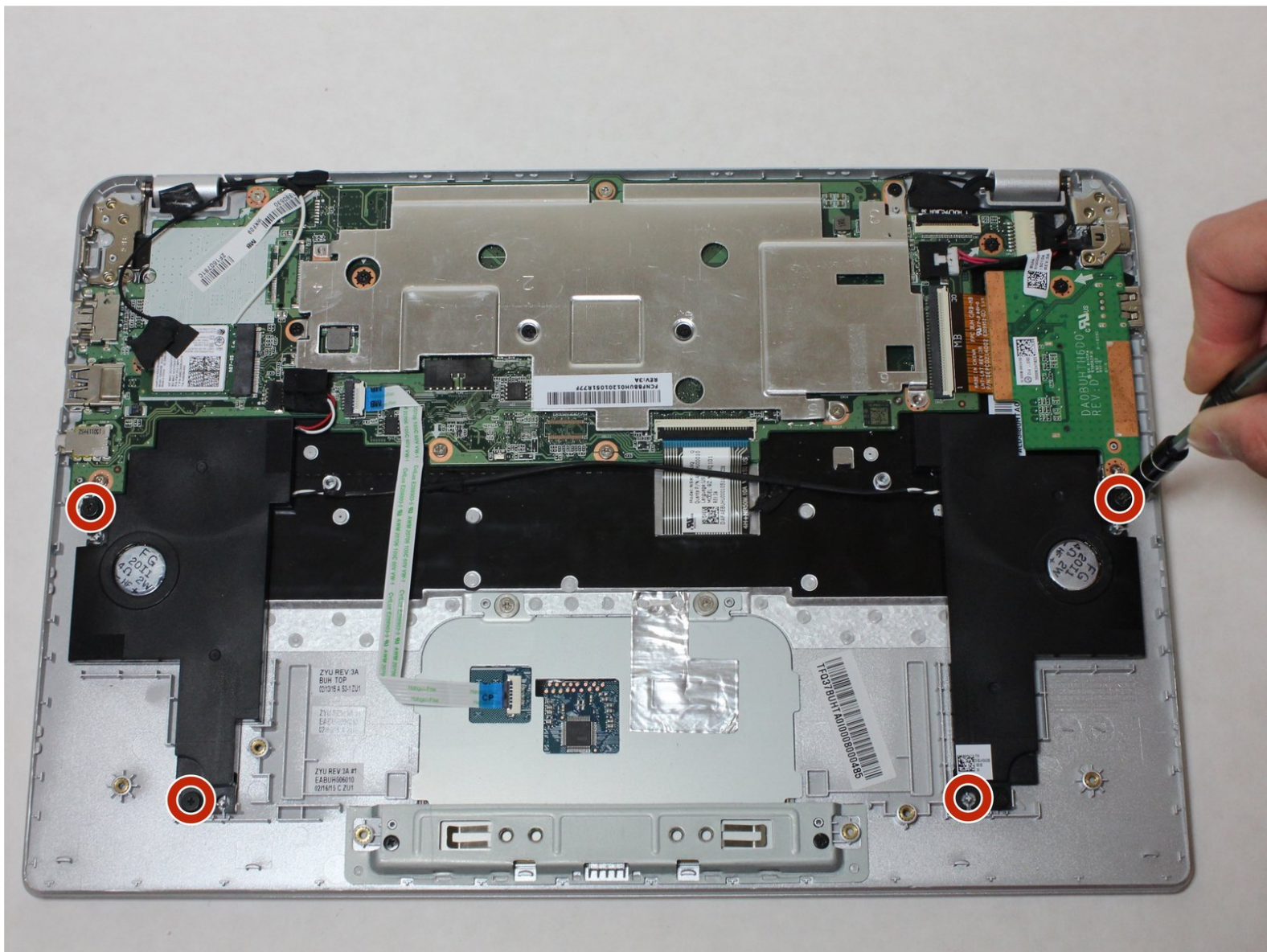




# Toshiba Chromebook 2 Speakers Replacement

This guide will show how to replace the speakers on your Toshiba Chromebook 2 to fix lack of sound or bad audio quality.

Written By: Alec Marnoch



---

## INTRODUCTION

Over time, speaker quality can degrade for a variety of reasons. Replacing the speakers will fix most issues involving sound and sound quality.

---



### TOOLS:

- [Spudger](#) (1)
  - [Phillips #0 Screwdriver](#) (1)
-

## Step 1 — Back Cover



- Remove all external devices from the Toshiba Chromebook 2.

## Step 2



- Close the Toshiba Chromebook 2 and turn it over so that the bottom of the laptop is facing upwards toward you with the lettering on the bottom facing right side up.

## Step 3



- Remove the 8 visible Phillips 8.25 mm screws using the Phillips #0 screwdriver.



## Step 4



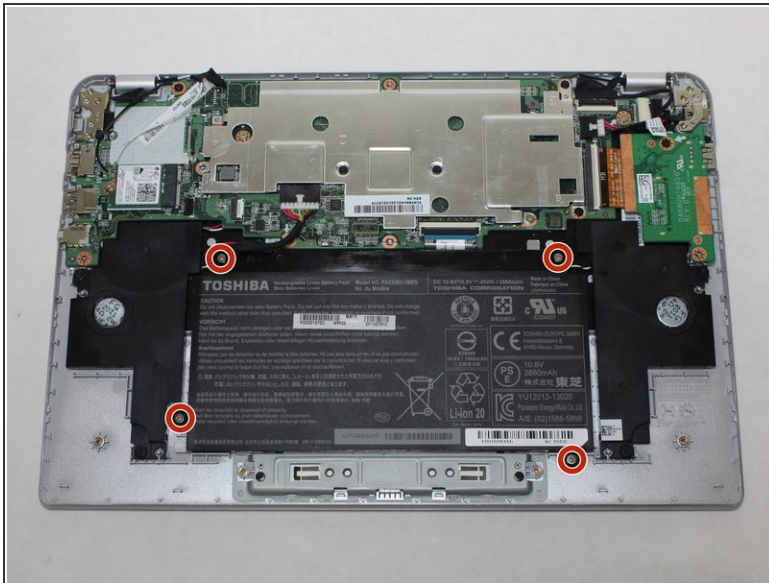
- Remove 2 hidden Phillips 8.25 mm screws located underneath the rubber grips at the back (opposite the hinges) with the Phillips #0 screwdriver.
- ⓘ The rubber grips are glued in place, so you'll need to peel them up with a spudger or other pry tool.

## Step 5



- Remove the back panel by pulling up on 2 adjacent corners.

## Step 6 — Battery



- Remove the 4 Phillips 2 mm screws holding the battery in place with the Phillips #0 screwdriver.

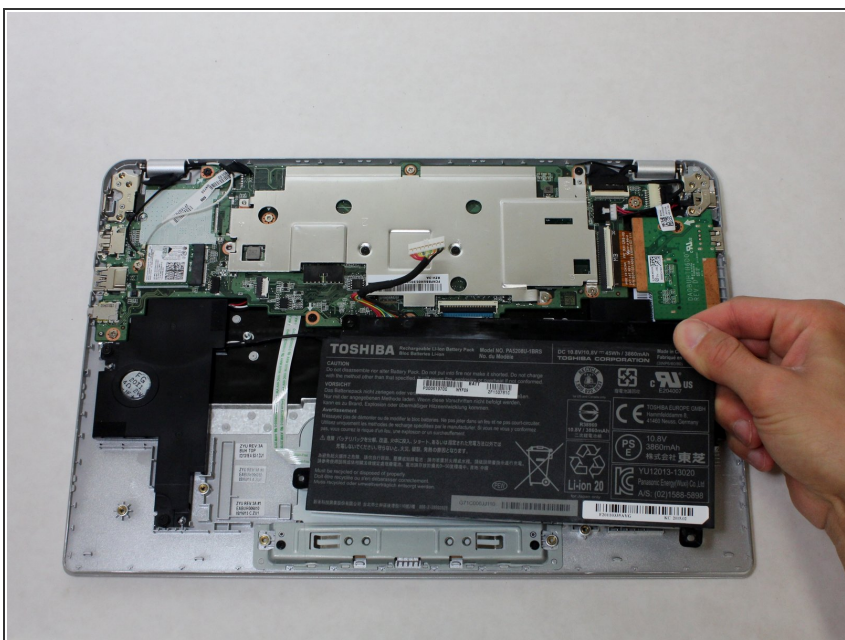
## Step 7



- Press down on the white clip and softly pull the wires out of the port to disconnect battery from the motherboard.

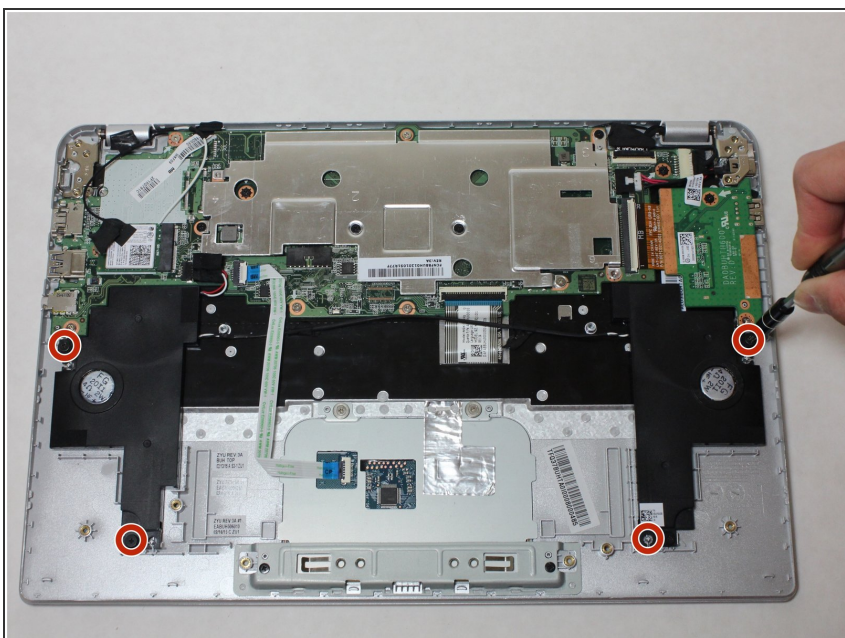


## Step 8



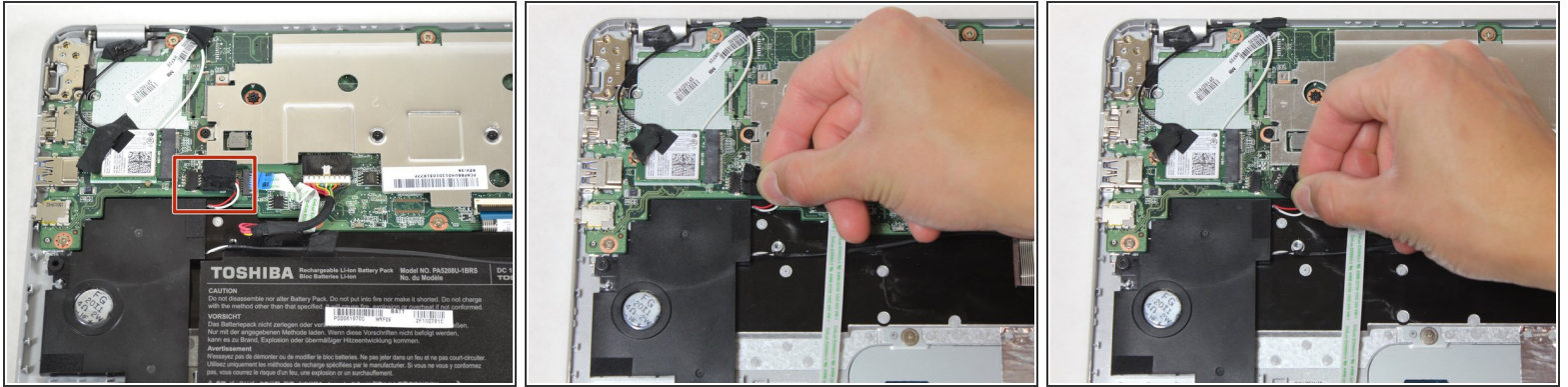
- Remove the battery by gently pulling up on the bottom corners.

## Step 9 — Speakers



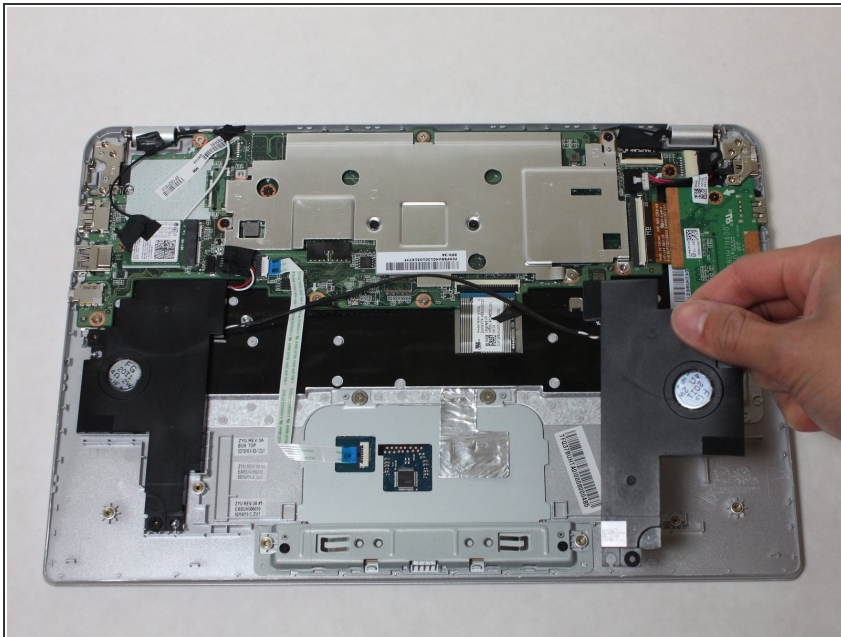
- Remove the 2 3.3 mm screws holding the left and right speakers with the Phillips #0 screwdriver.

## Step 10



- Pull the red and white wires out of the socket above the left speaker to disconnect the speakers from the motherboard.

## Step 11



- Remove the speakers by lifting upwards.
- ⓘ Wiring connecting the left and right speakers may be taped to the top of the battery. Simply remove the tape to remove the speakers.

To reassemble your device, follow these instructions in reverse order.