



Garmin Nuvi 265 WT GPS Replacement

Showing step by step process of opening the Garmin Nuvi 265 WT GPS.

Written By: Nicholas Salinas





TOOLS:

- [T5 Torx Screwdriver](#) (1)
 - [iFixit Opening Picks set of 6](#) (1)
-

Step 1 — Opening the Garmin Nuvi 265 WT GPS



- Pull back the barcode located on the back of the device.

Step 2



- Unscrew the two screws located underneath the barcode.

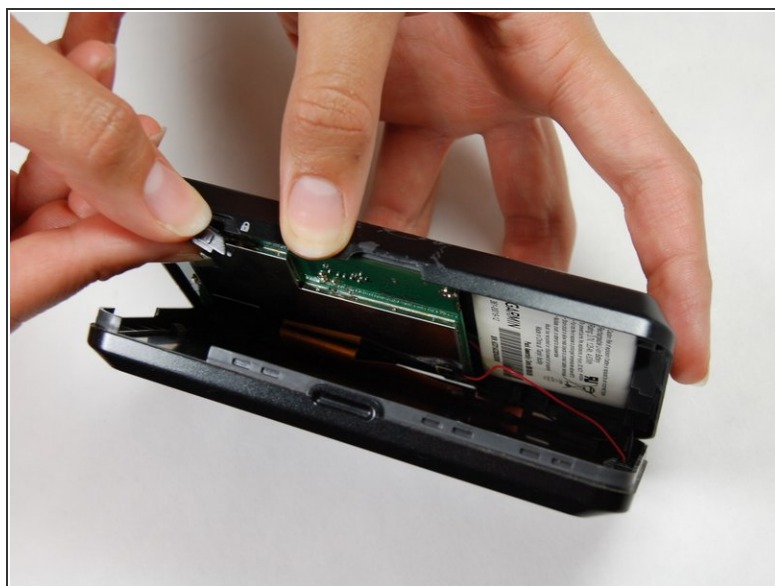
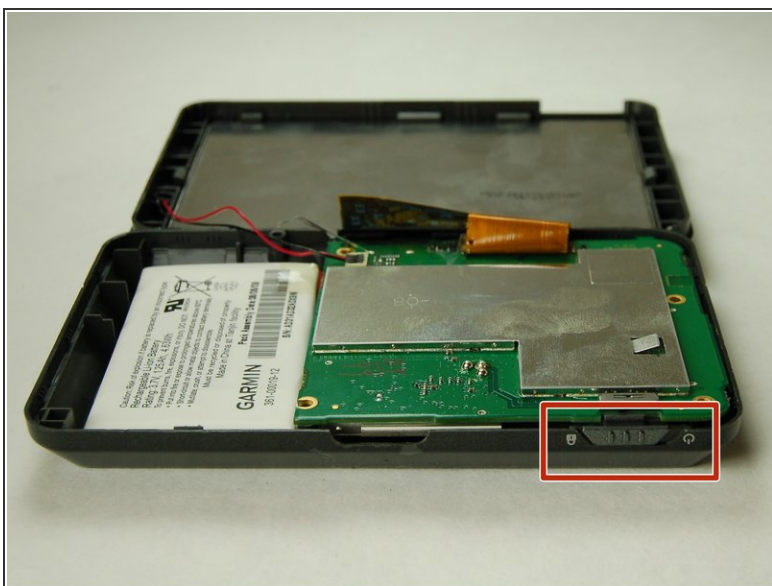
Step 3



- Use the pic to prop open the device on all four sides.

⚠ There are clips located on the inside of the device. Be careful when inserting the pic into the device.

Step 4



- Be sure to remove the On and OFF switch.

i Open the device gently to make sure not to lose the clip.

Step 5



⚠ Remove the tape that is holding down the wires carefully/slowly.

Step 6



● Remove all four screws on the mother board with a T5 screw.

To reassemble your device, follow these instructions in reverse order.