



# Oster 3905 Outer Shell Replacement

This step by step guide shows you how to remove the outer shell of the toaster. You will need to remove the outer shell in order to repair things on the inside.

Written By: Melissa



---

# INTRODUCTION

Prerequisite only.



## TOOLS:

- [Phillips #2 Screwdriver](#) (1)
  - [Metal Spudger](#) (1)
  - [JIS Driver Set](#) (1)
-

## Step 1 — Slot Levers



- Firmly grip your hand around the slot lever.

## Step 2



- Stabilize the toaster by placing your hand on top.



## Step 3



- Forcefully pull the slot lever away from the toaster by keeping parallel to the table.

## Step 4



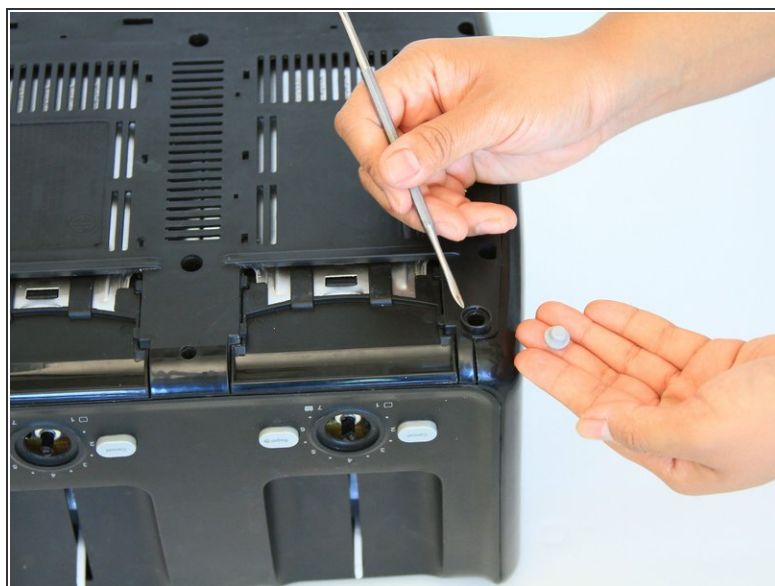
- Both slot levers can be removed.

## Step 5 — Outer Shell



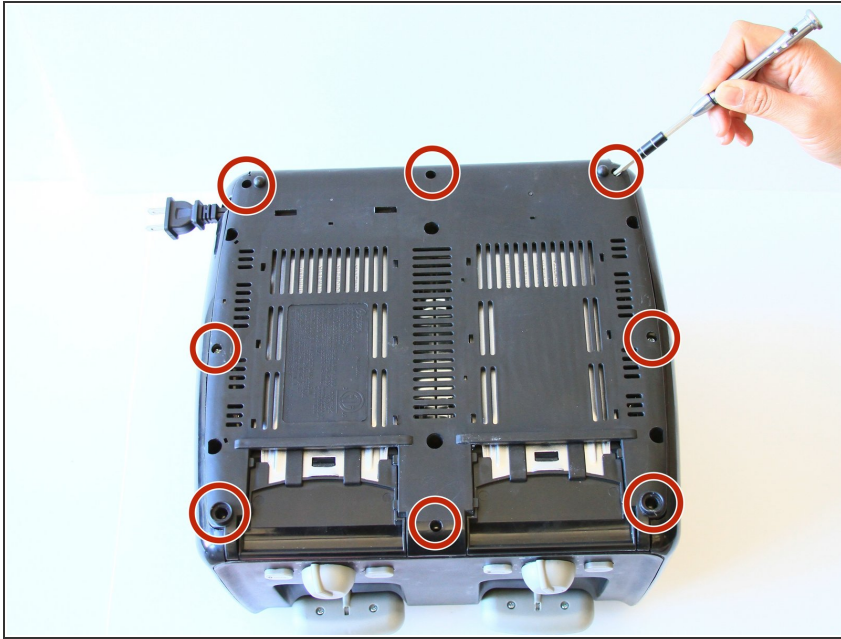
- Place the toaster upside down so the bottom is facing the ceiling.

## Step 6



- Take off both rubber feet using a small metal spudger.
- Wedge a spudger under the feet and pull up to pop off.

## Step 7



- Use a PH#2 screw bit to remove eight 12mm screws that are located around the perimeter.
- ⓘ There are two screws under the rubber feet.

## Step 8



- Place the toaster right side up.

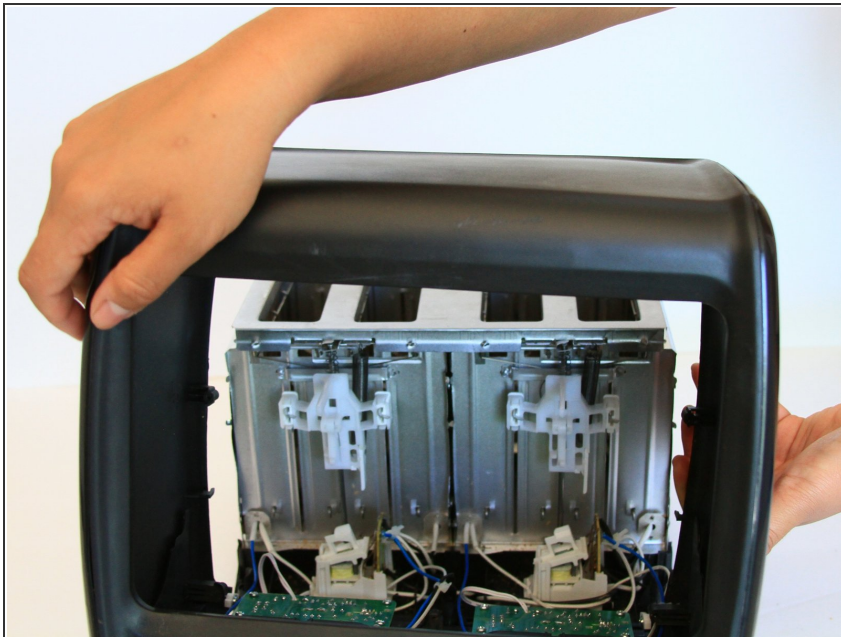


## Step 9



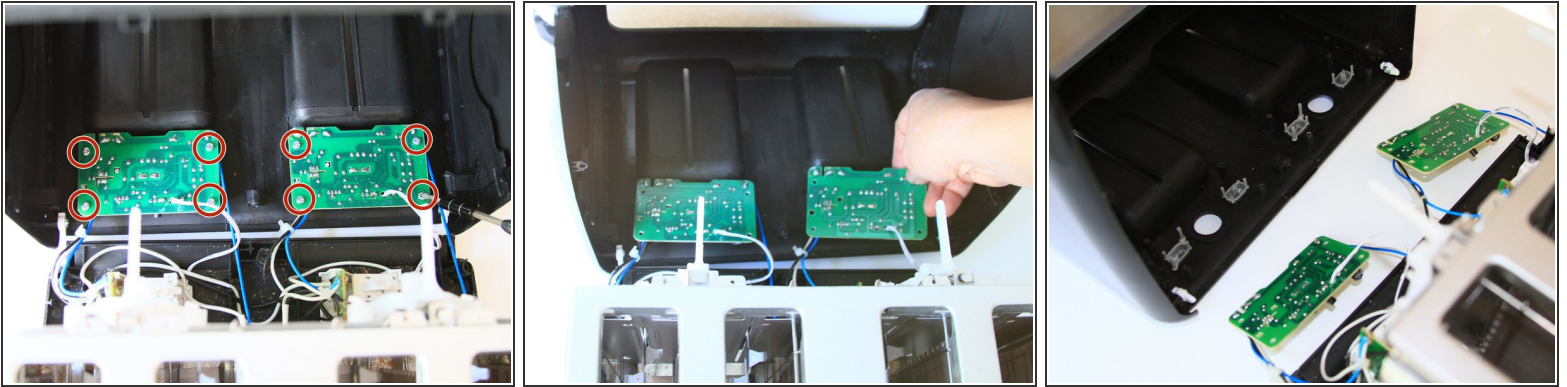
- Grab the outer shell firmly and pull up towards the face of the toaster.

## Step 10



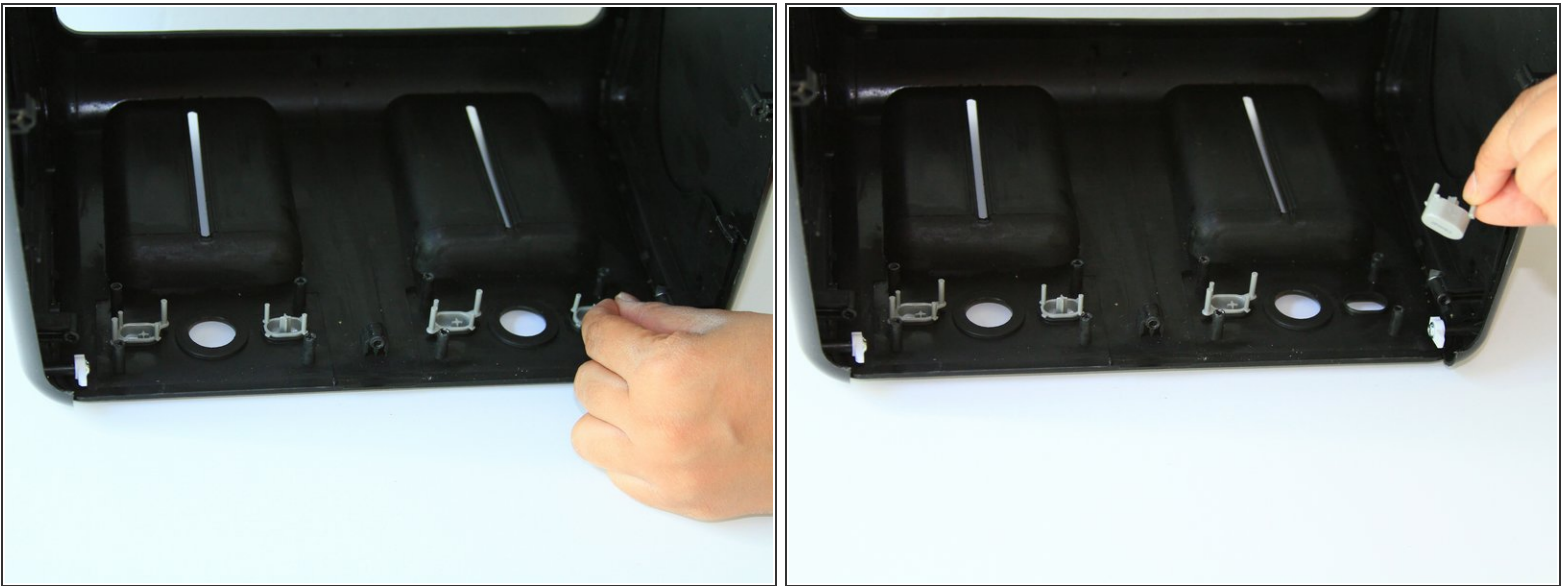
- For this part, you might need to wiggle the toaster to get the outer shell off.
- ⓘ The shell will not completely come off until the motherboard is removed in the next step.

## Step 11



- Use a J1 screw bit to unscrew eight 8mm screws from the motherboard.

## Step 12



- Take out the grey “cancel” and “bagel” buttons from the shell.

To reassemble your device, follow these instructions in reverse order.