



Acer Aspire 7736Z-4809 Keyboard Replacement

If your keyboard does not respond to your typing, try this guide to replace your keyboard.

Written By: Pnithan Jantarakolica



INTRODUCTION

This replacement requires opening up the laptop. Please follow the procedures carefully.



TOOLS:

- [Phillips #1 Screwdriver](#) (1)
- [iFixit Opening Tools](#) (1)
- [Metal Spudger](#) (1)
- [Tweezers](#) (1)



PARTS:

- [keyboard panel](#) (1)

Step 1 — Acer Aspire 7736Z-4809 Repair Preparation



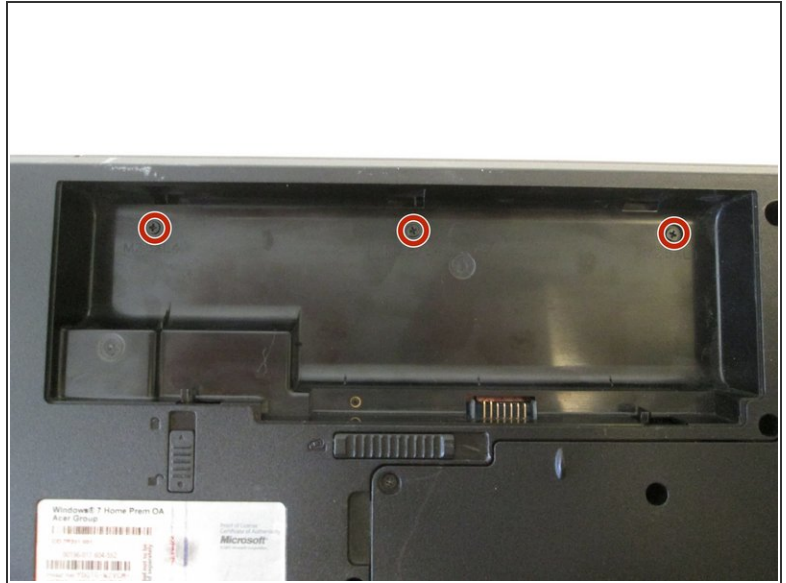
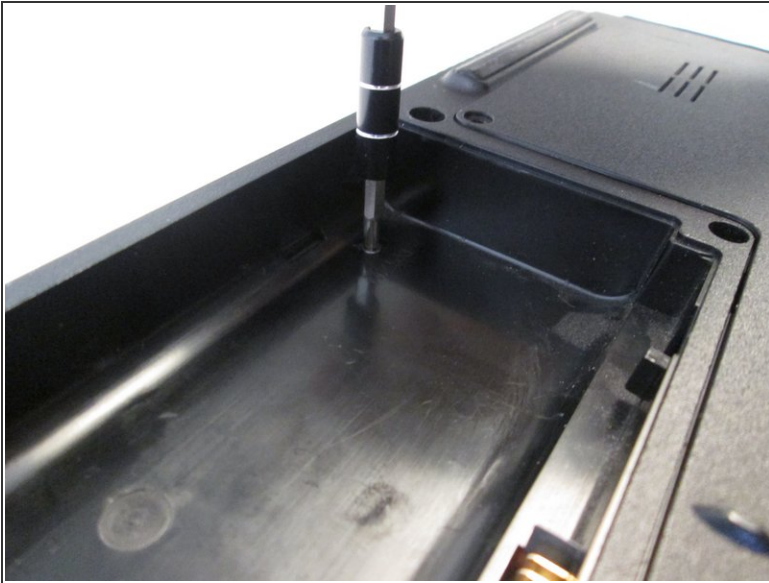
- Unplug and power off the laptop.
- ⓘ If the battery is still connected to the laptop, remove the battery.

Step 2



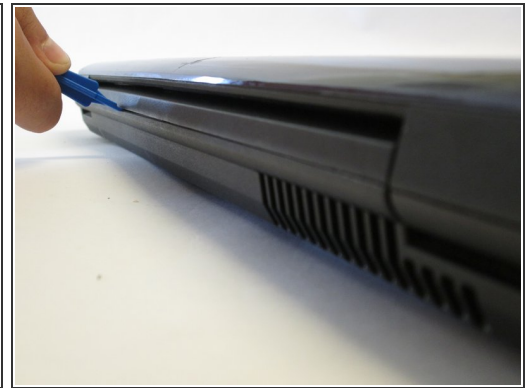
- Flip over the laptop so that the back panel of the laptop is facing up.

Step 3 — Keyboard



- Use the Phillips #1 screwdriver to remove the three 4.5mm Phillips #1 screws.

Step 4



- Orient the laptop so that the hinges between the LCD module and the laptop's bottom base are visible.
- Use the plastic opening tools to separate the speaker panel from the laptop.

Step 5



- Flip over the LCD module of the laptop.
- Use the plastic opening tools to separate the speaker panel from the laptop.
- ① Insert the opening tool into the crack between the panel and the frame at either end. Slide the opening tool across the line. Reinsert the opening tool into the crack and apply leverage until the frame releases.
- Repeat this step with the other side of the laptop.

Step 6



- Gently hold the speaker panel by the sides and pull upwards to release the panel.

Step 7



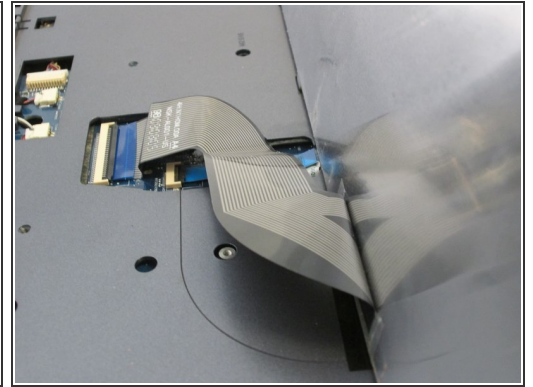
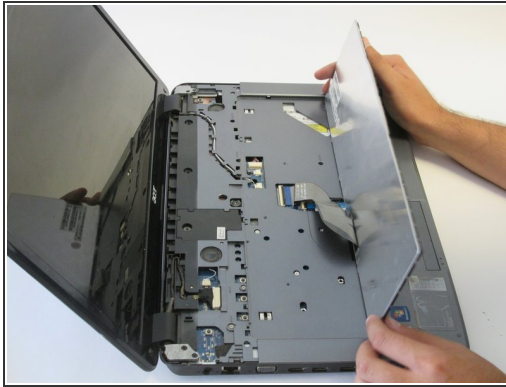
- Use the flat end of the medium sized metal spudger tool to release the two tabs at the top of the keyboard.
- ⚠ Do not remove the keyboard yet.

Step 8



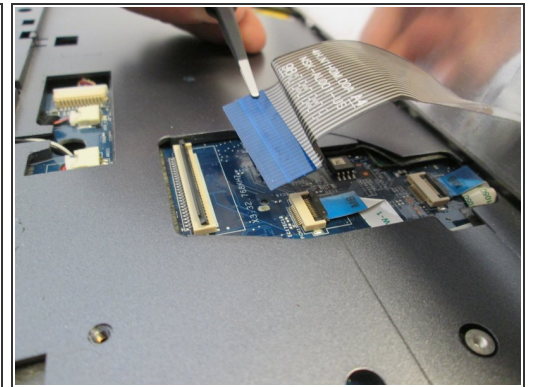
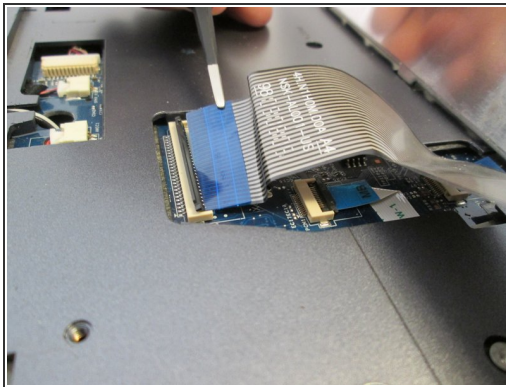
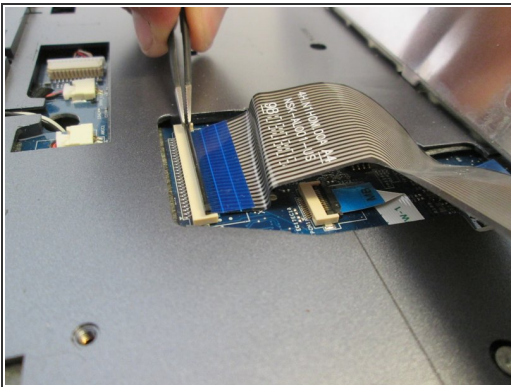
- Insert a finger into the opening above the F11 key and pry the keyboard until it is released from the casing.

Step 9



- Gently raise the keyboard with your hands.

Step 10



- Lift the black latch upwards to release the ZIF connector.

Step 11



- Remove the keyboard from the keyboard slot.

To reassemble your device, follow these instructions in reverse order.