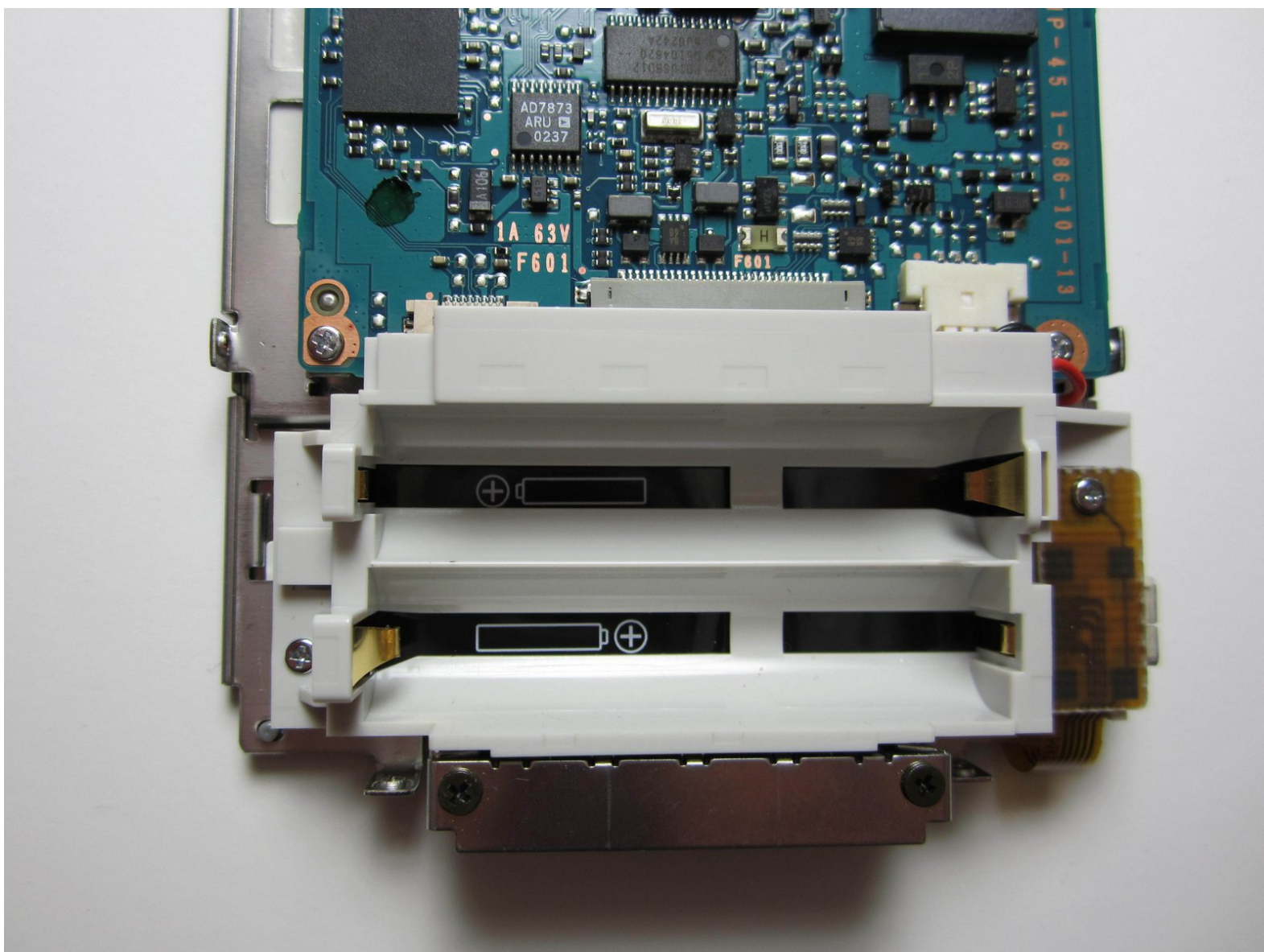




# Sony Clie PEG-SL10 Battery Harness Replacement

This guide will show you how to replace a faulty battery case with a new one.

Written By: Emily



**TOOLS:**

- [Phillips #0 Screwdriver](#) (1)

**PARTS:**

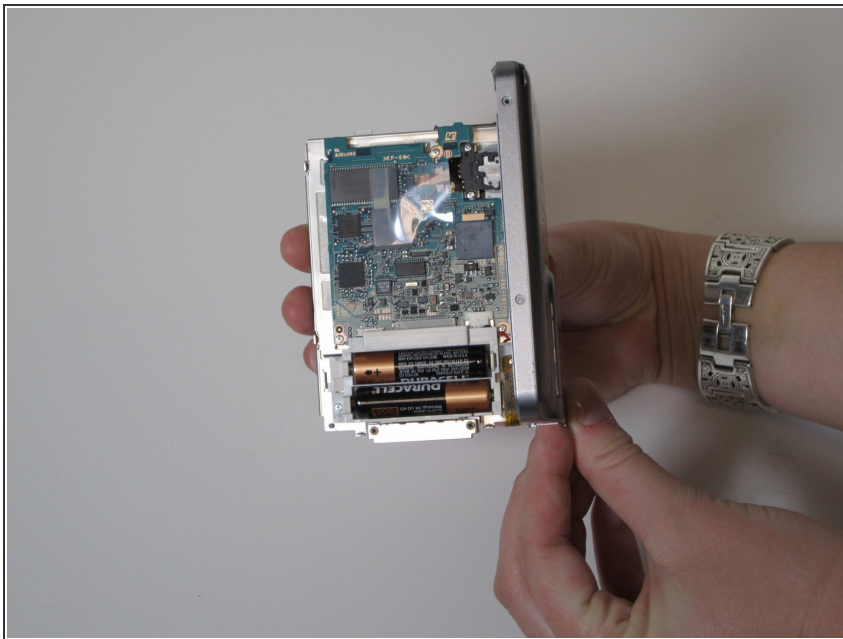
- [Battery Harness](#) (1)

## Step 1 — Battery Harness



- Remove the six screws holding the outside case of the Sony Clie.

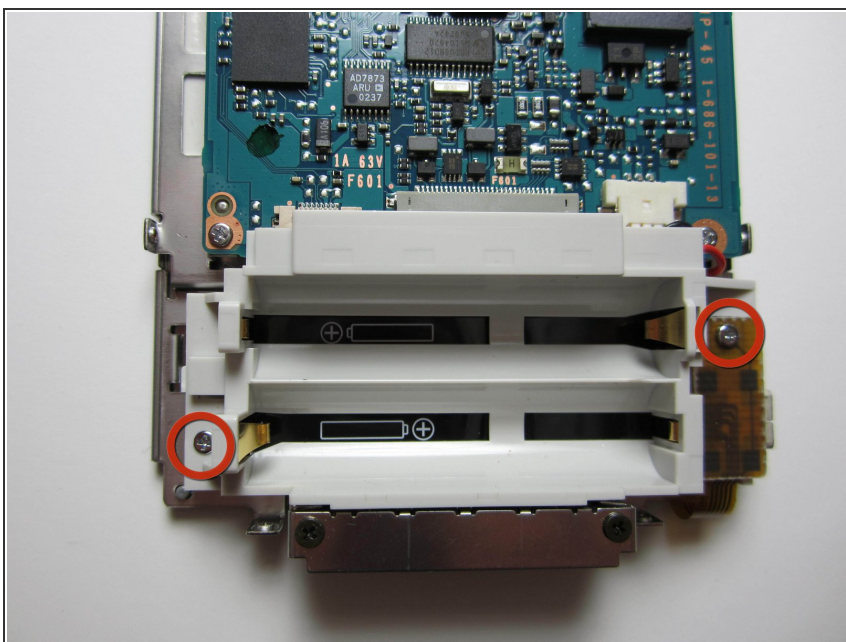
## Step 2



- Remove the six screws holding the outer case.

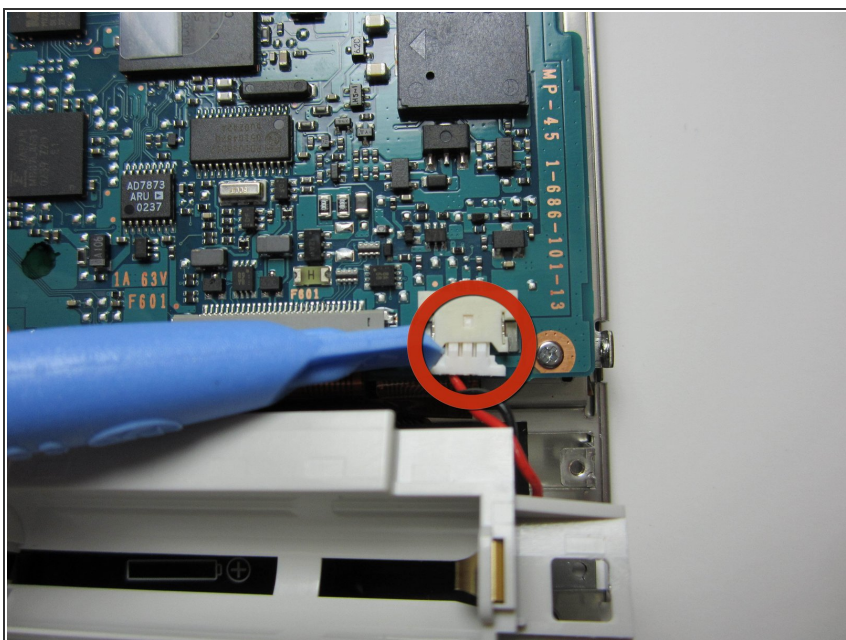


### Step 3



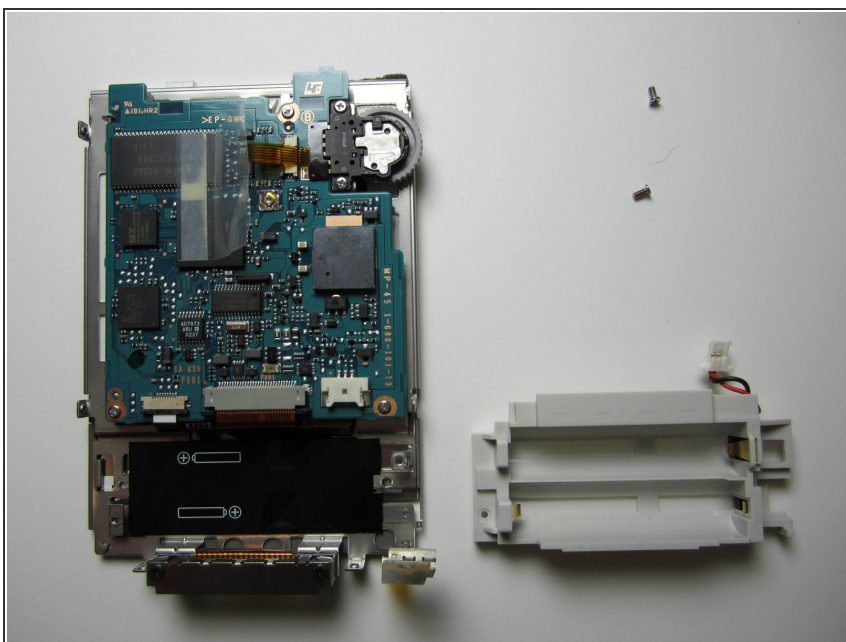
- Remove the two screws holding the battery harness in place.

### Step 4



- Gently pull the power cable from the socket.

## Step 5



- The battery harness is now removed. Install the new harness in reverse order.

To reassemble your device, follow these instructions in reverse order.