



Gateway 3545GZ Fan Replacement

If you are struggling to replace your fan in...

Written By: Nathan Parr



INTRODUCTION

If you are struggling to replace your fan in your Gateway laptop, this guide is for you. Some common symptoms for a fan replacement are listed below.

- 1.) Excessive heat coming from laptop
- 2.) Fan making loud rattling or buzzing noises
- 3.) Laptop overall not working correctly

If your laptop is experiencing any of the symptoms listed above, I hope this guide is helpful.

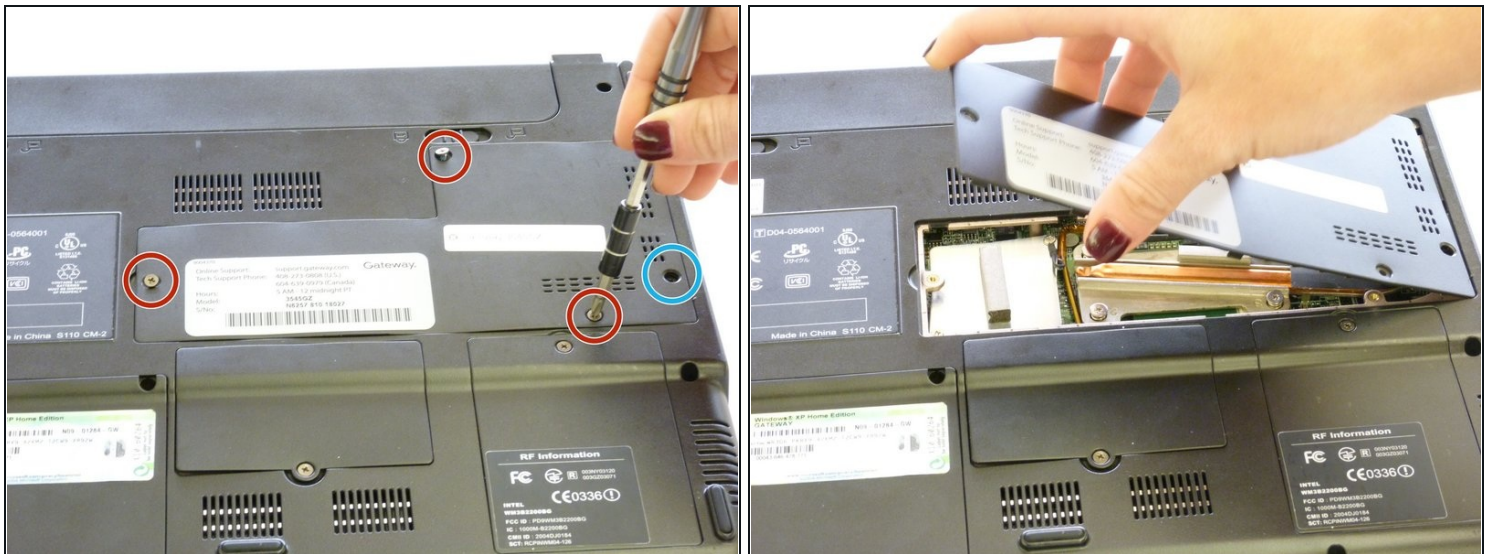
TOOLS:

Phillips #1 Screwdriver (1)

PARTS:

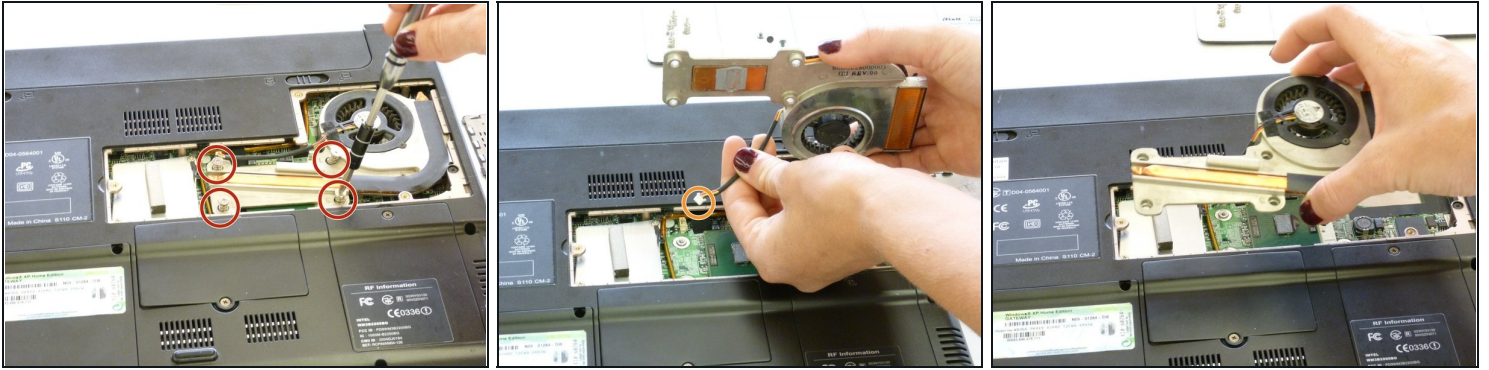
Gateway 3545GZ Fan (1)

Step 1 — Fan



- Unscrew 14mm screws with Phillips screwdriver.
- Unscrew 3mm screws with the same Phillips screwdriver.
- ① Screws that are circled in red are 3mm; the screw circled in blue is 14mm
- Remove the protective cover.

Step 2



- Unscrew the four screws holding it in place with the same PH1 Phillips-Head screwdriver. They are numbered on the fan, 1,2,3,4.
- ① The four screws are 12mm long, they also have a spring surrounding them.
- Then carefully pull the cord connecting the fan to the notebook.
- Insert your replacement fan, plug in its cord, screw it into place, and reattach the protective cover.

To reassemble your device, follow these instructions in reverse order.