



# Gateway 3545GZ Battery Replacement

This guide demonstrates how to replace the battery of a Gateway 3545GZ which may no longer serve its purpose.

Written By: Nathan Parr

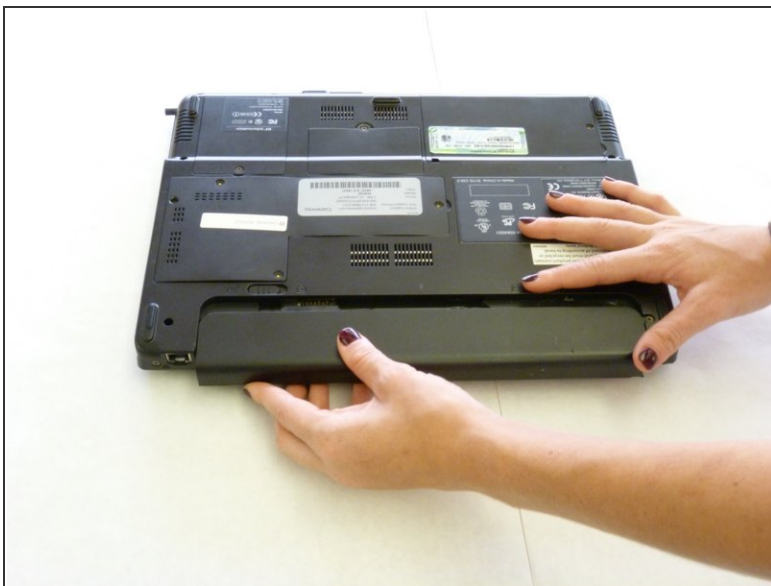


## Step 1 — Battery



- Locate the two tabs at the bottom of the notebook and push them to the unlocked position (indicated by an open lock symbol.)

## Step 2



- Pull the battery pack away from the notebook to remove it.
- Next, insert its replacement and lock it into place.
- Safely dispose of the old battery by recycling it through a local service, or through a nearby electronics store.

To reassemble your device, follow these instructions in reverse order.