



# Nikon CoolPix S600 Front and Rear Casing Replacement

Written By: andreas anggasastra



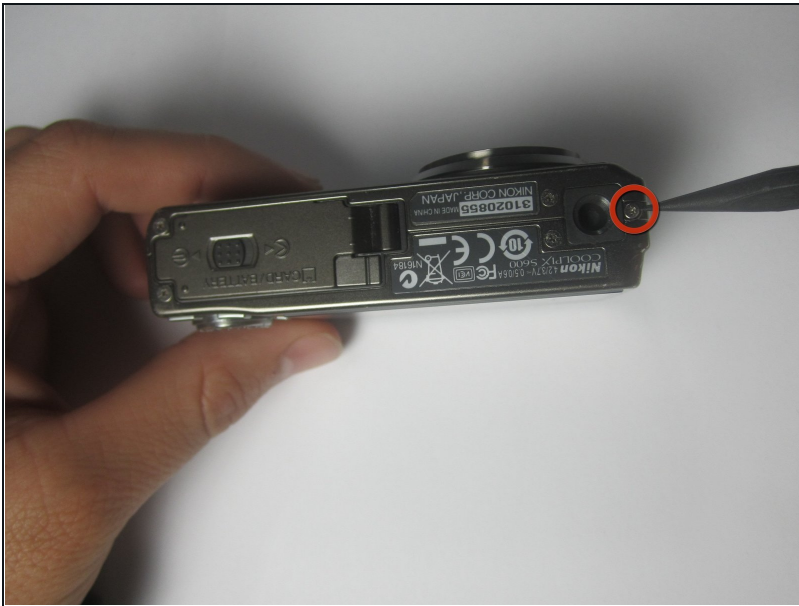
## TOOLS:

Phillips #00 Screwdriver (1)

Spudger (1)

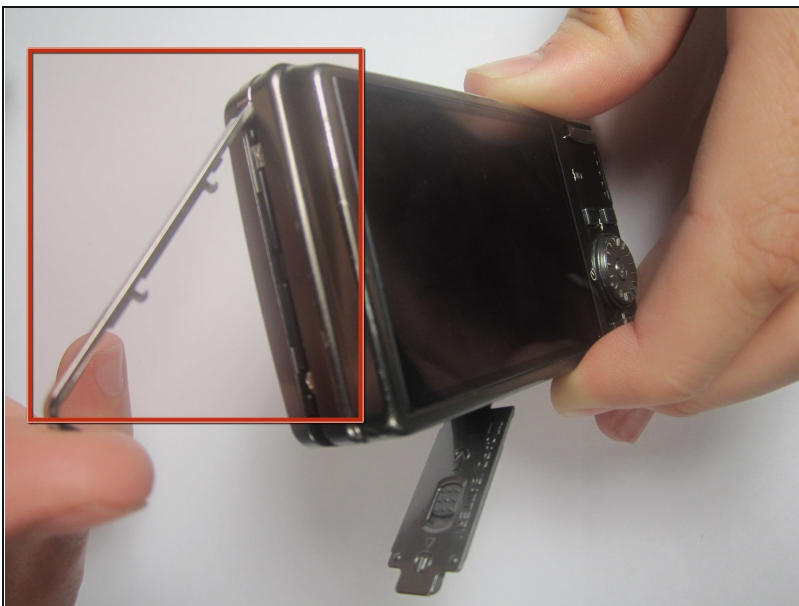
Tweezers (1)

### Step 1 — Front and Rear Casing



- With the lens facing forward, remove the one 4.2 mm screw on the bottom right hand corner of the camera.

### Step 2



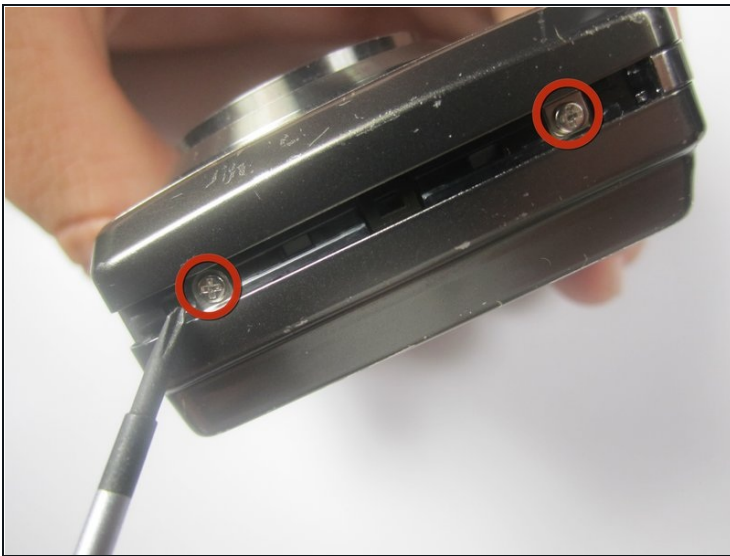
- Remove the chrome side cover from the body of the camera.

### Step 3



- Remove the four 3.2 mm screws on the bottom of the camera.

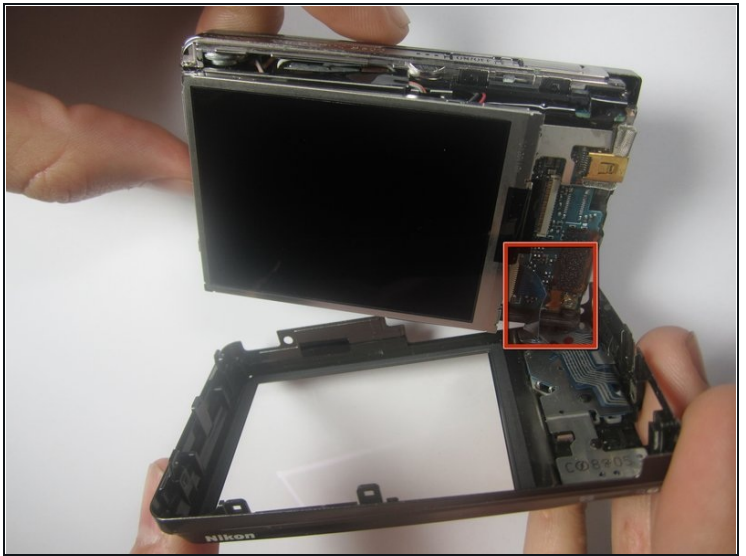
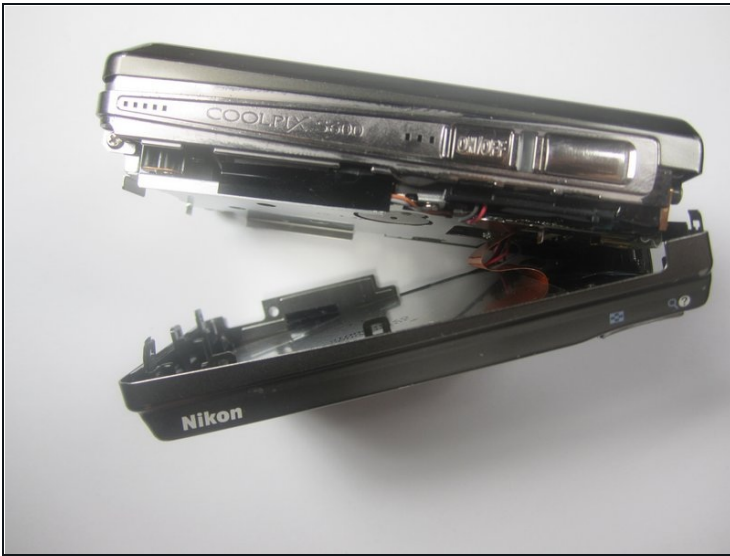
### Step 4



- Remove the two 3.2 mm screws from the right side of the camera (with lens is facing forward)
- Remove the one 3.2 mm screw from the left side of the camera (with lens facing forward)



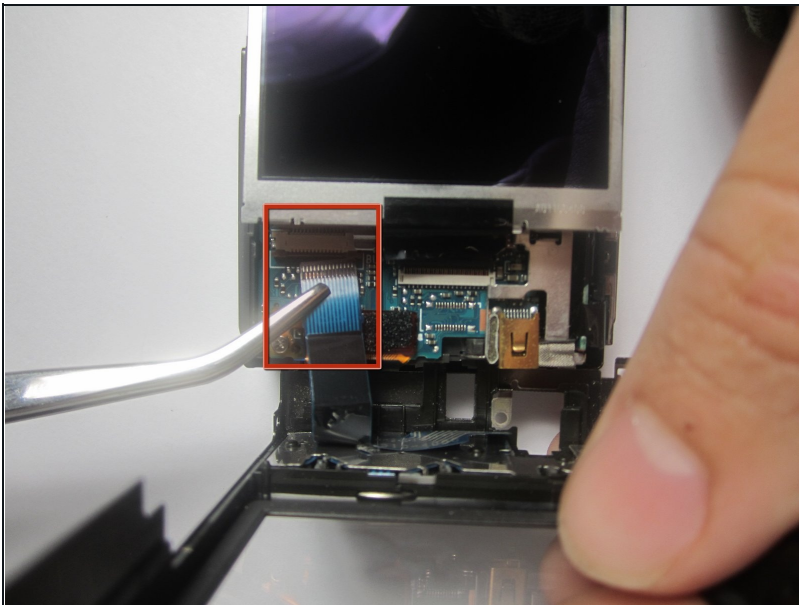
## Step 5



- Gently separate the back cover from the body of the camera.

⚠ The back casing will still be connected to the circuit board by a ribbon

## Step 6



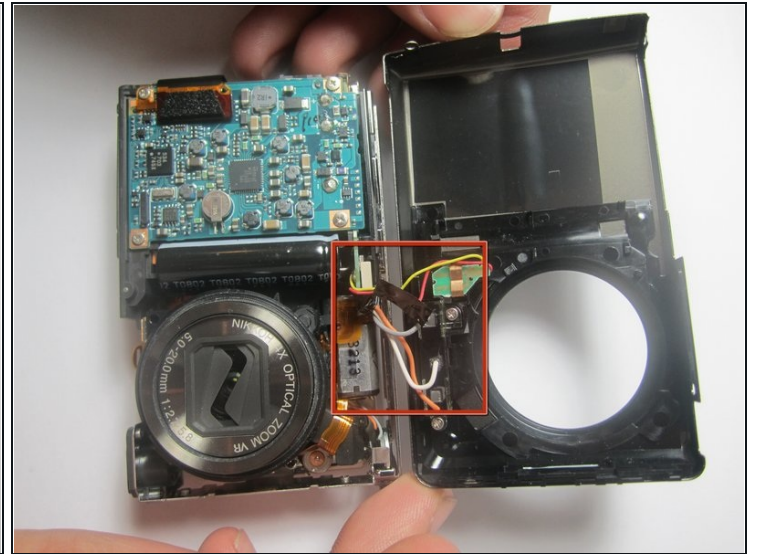
- Use the [tweezers](#) to disconnect the ribbon from the circuit board.

## Step 7



- Remove the one 2.6 mm screw from the left side of the camera (with the lens facing forward)

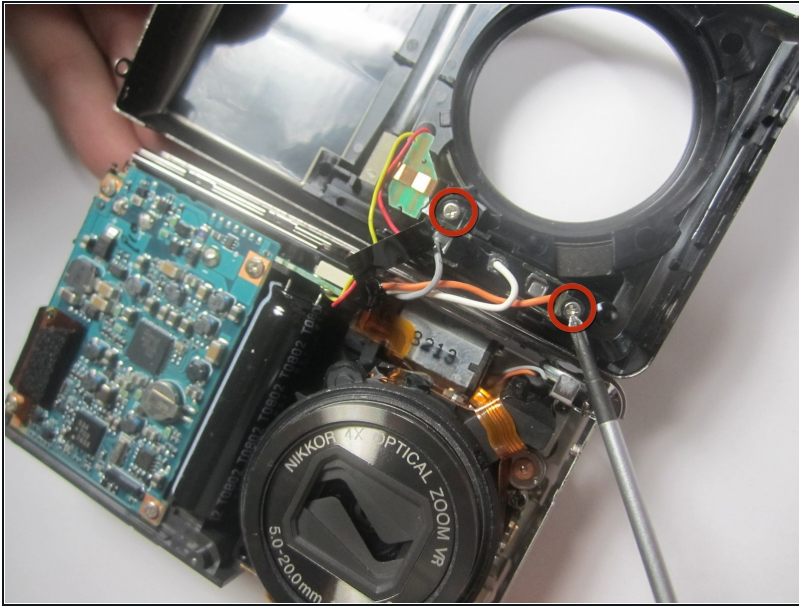
## Step 8



- Gently separate the front cover from the body of the camera.

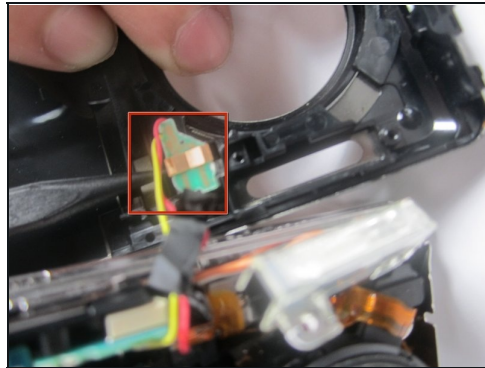
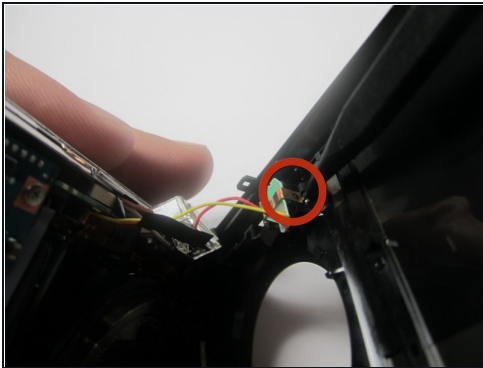
⚠ The front casing will still be connected to the circuit board by a few wires

## Step 9



- Remove the two 3.2 mm screws that hold the flash to the front cover.

## Step 10



- Use the Spudger to remove the copper colored light bulb clip.
- Remove the front cover entirely from the camera body.

To reassemble your device, follow these instructions in reverse order.