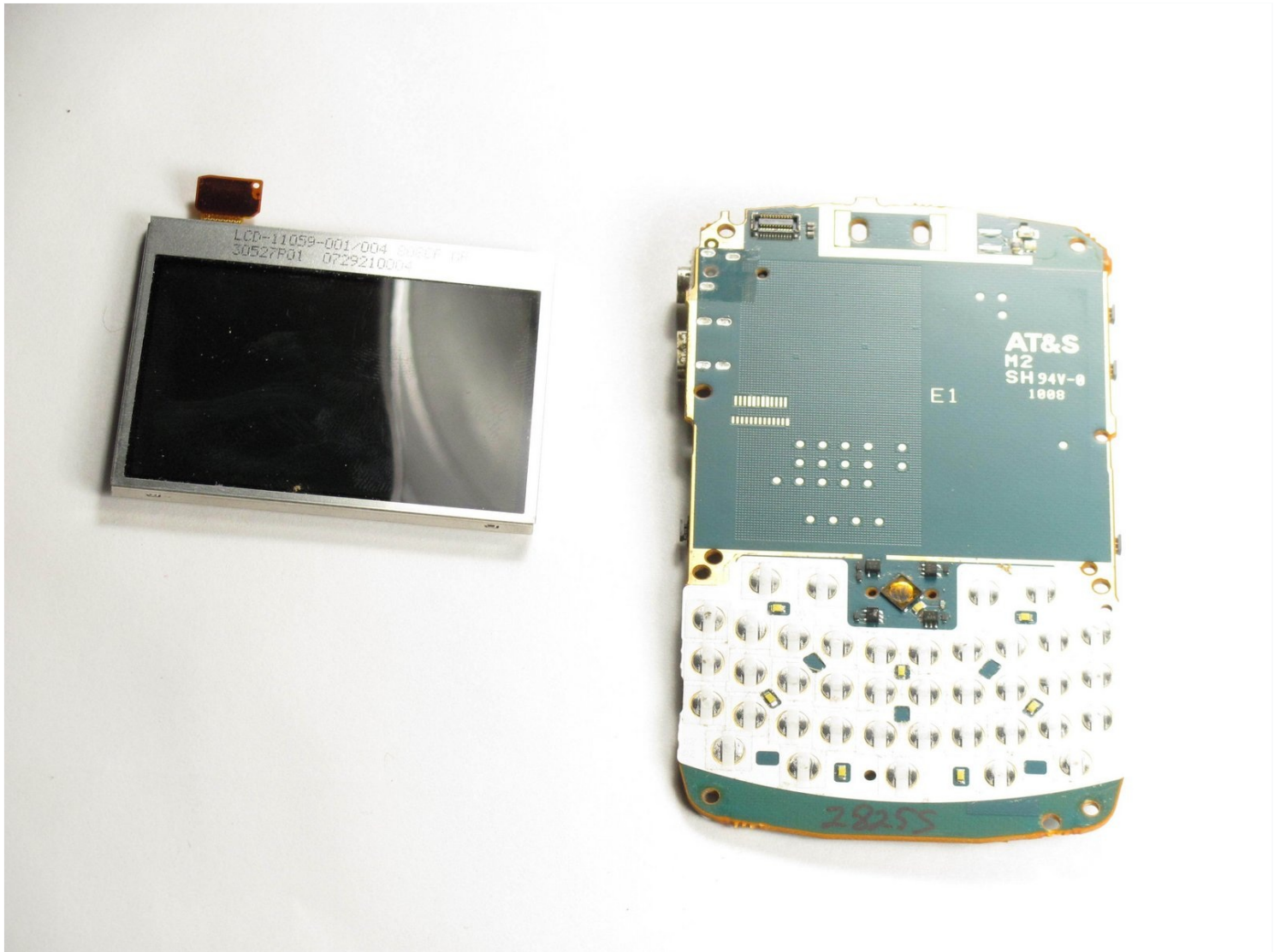




# Blackberry Curve 8320 LCD Screen Replacement

This guide will show you how to: (1) Remove the...

Written By: Christopher Aiello



# INTRODUCTION

This guide will show you how to:

- Remove the battery
- Remove the front panel
- Replace the LCD screen

---

## TOOLS:

[iFixit Opening Tool](#) (1)

[T5 Torx Screwdriver](#) (1)

[T6 Torx Screwdriver](#) (1)

---

## Step 1 — Battery



- Hold the phone with the back facing you.
- Press the silver tab down and remove the cover.

## Step 2



- Pull up on the top edge of the battery to remove it.

## Step 3 — Front Panel



- Use a plastic opening tool to gently pry the bottom cover loose.

⚠ Do not use excessive force at risk of damaging the antenna, which is under this casing.

- Pull the cover from the front of the phone after the back is loose.



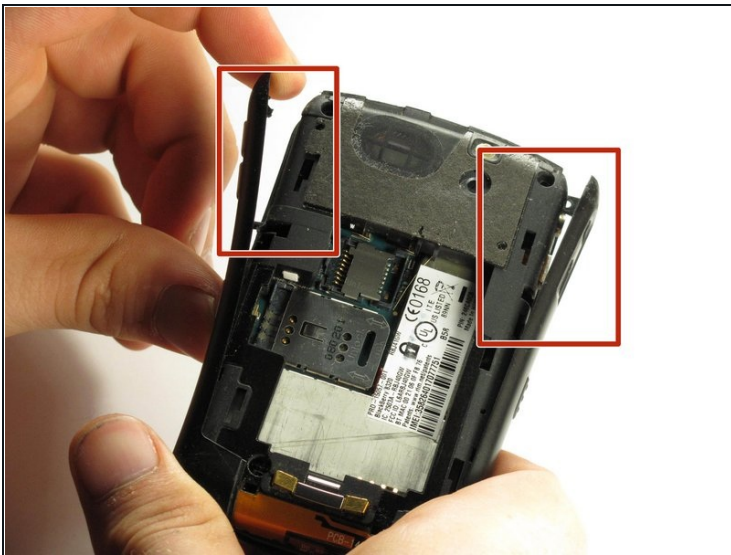
## Step 4



- Remove the two top screws with a T5 Torx screwdriver.

ⓘ The screws are 8mm long.

## Step 5

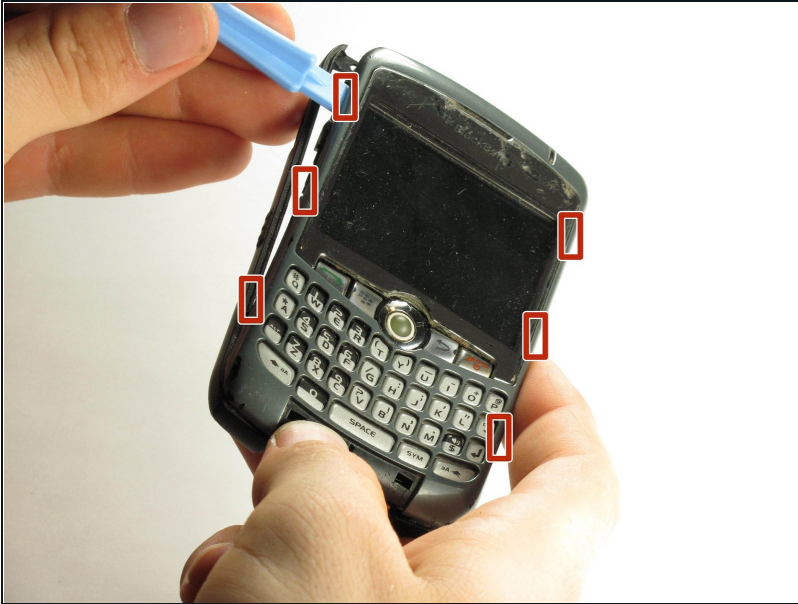


- Gently pry off the side casings from the top.

⚠ The side casings cannot be fully removed yet because they are screwed on at the bottom.

- You will not need to remove the sides on the bottom.

## Step 6



- Use a plastic opening tool to detach the securing clips holding the the front panel in place.

ⓘ There are six securing clips total.

## Step 7



- Carefully remove the front panel.

ⓘ You may need to apply some force in removing because the front panel is attached to the rest of the device with adhesive.



## Step 8 — LCD Screen



- Use a T6 Torx screwdriver to remove the four screws located on the corners of the keyboard frame.

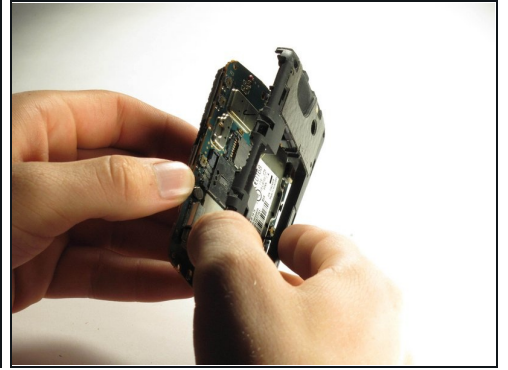
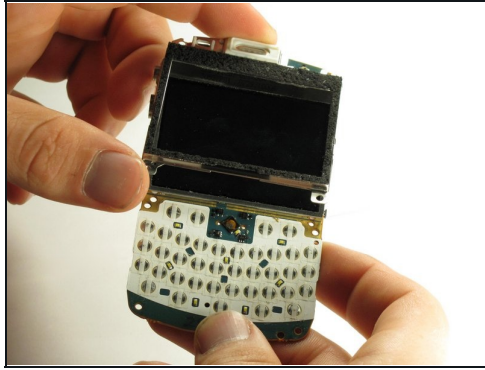
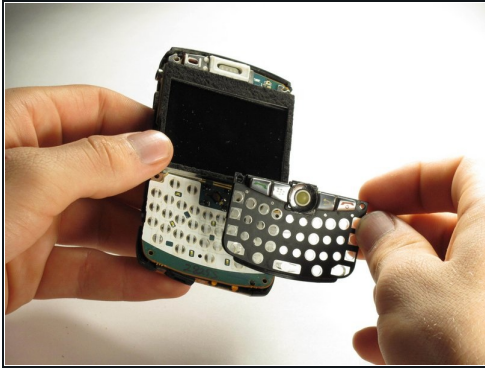
ⓘ The screws are 6mm long.

## Step 9



- After the bottom two screws have been removed the side casings can be removed.

## Step 10



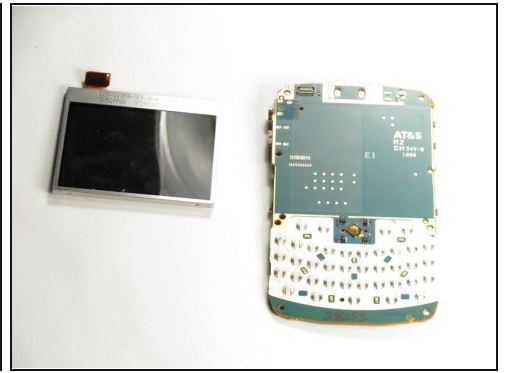
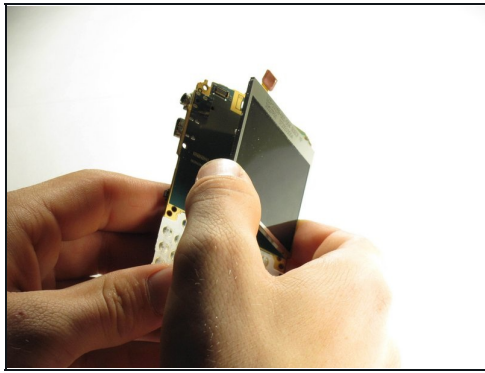
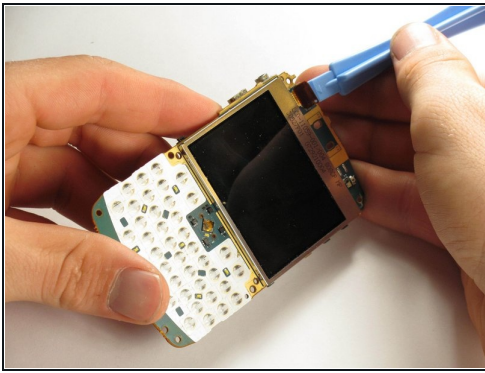
- When all four screws are removed, the keyboard frame, screen housing, screen, and back casing can be separated.
- ☑ The screen frame hooks on to the top of the motherboard with a small tab on the motherboard.

## Step 11



- ① Place the motherboard on a flat surface with the LCD screen face up.

## Step 12



- Using a plastic opening tool, gently pull the connector directly up from the motherboard.
  - Remove the LCD screen from the motherboard.
- ⓘ The screen is attached to the motherboard with adhesive.

---

To reassemble your device, follow these instructions in reverse order.