



Sony SRS-X3 Bluetooth NFC Wireless Speaker Teardown

Today we'll be disassembling the Sony SRS-X3 speaker.

Written By: Larry Chen

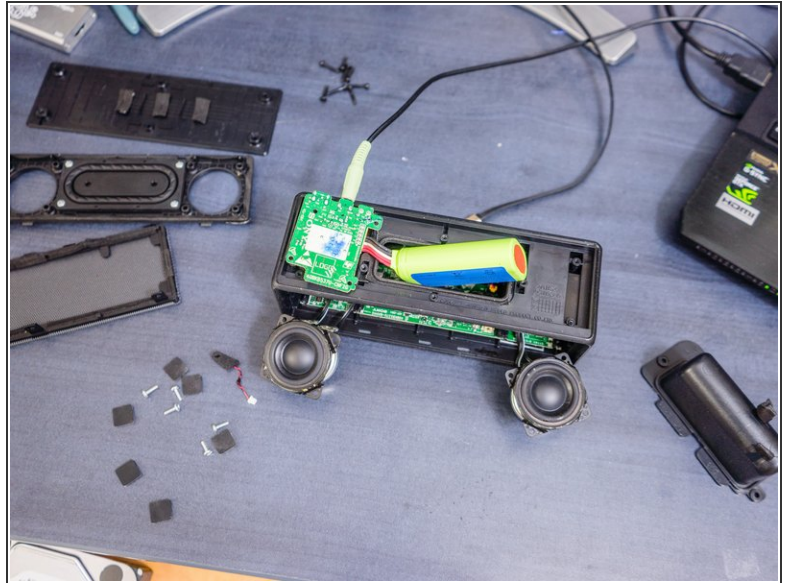




TOOLS:

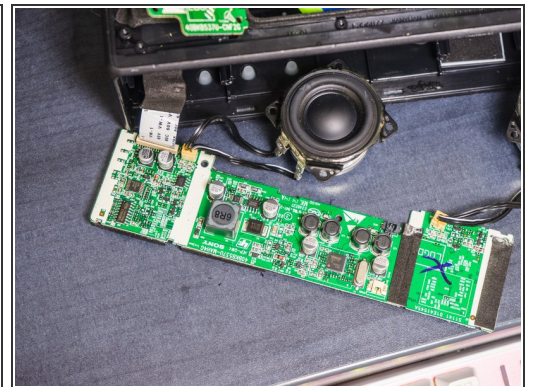
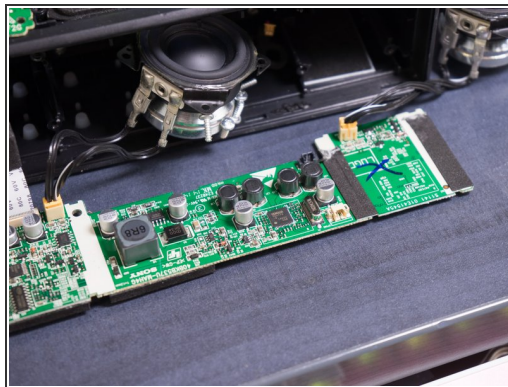
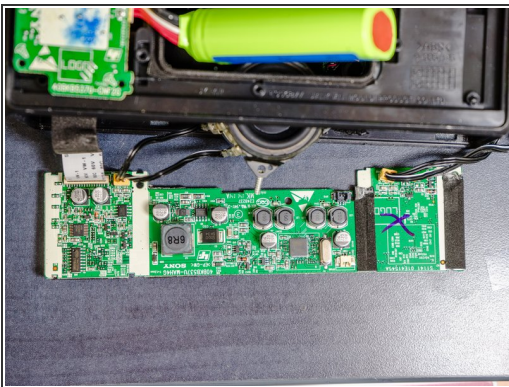
- [Phillips #1 Screwdriver](#) (1)
-

Step 1 — Sony SRS-X3 Bluetooth NFC Wireless Speaker Teardown



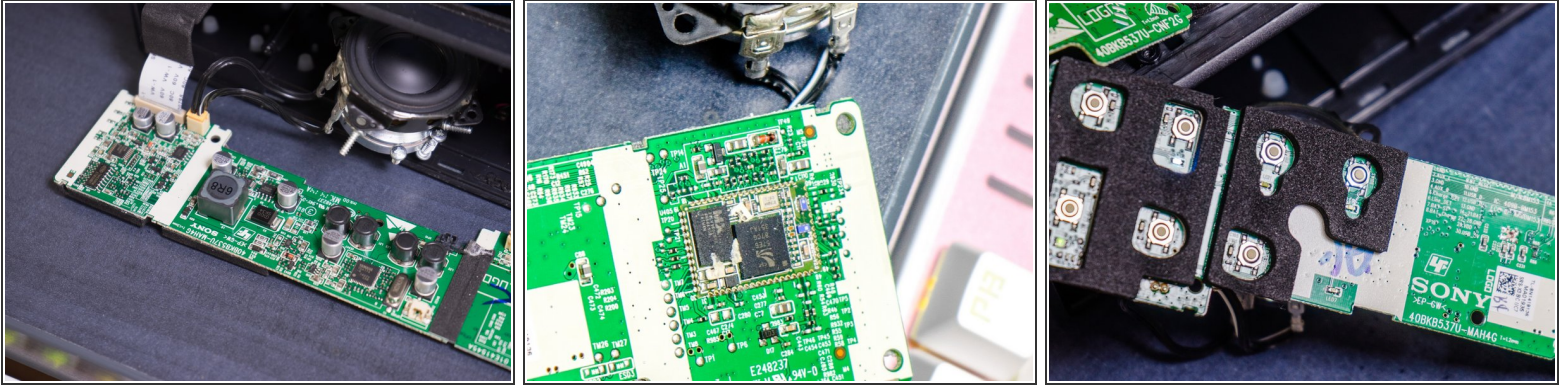
- There are 6 screws under the rubber feet on the bottom. Removing them allows the bottom plate to be removed, and then from there, the front panel, front cover, and battery compartment.
- if you need higher resolution photos please leave a comment.

Step 2



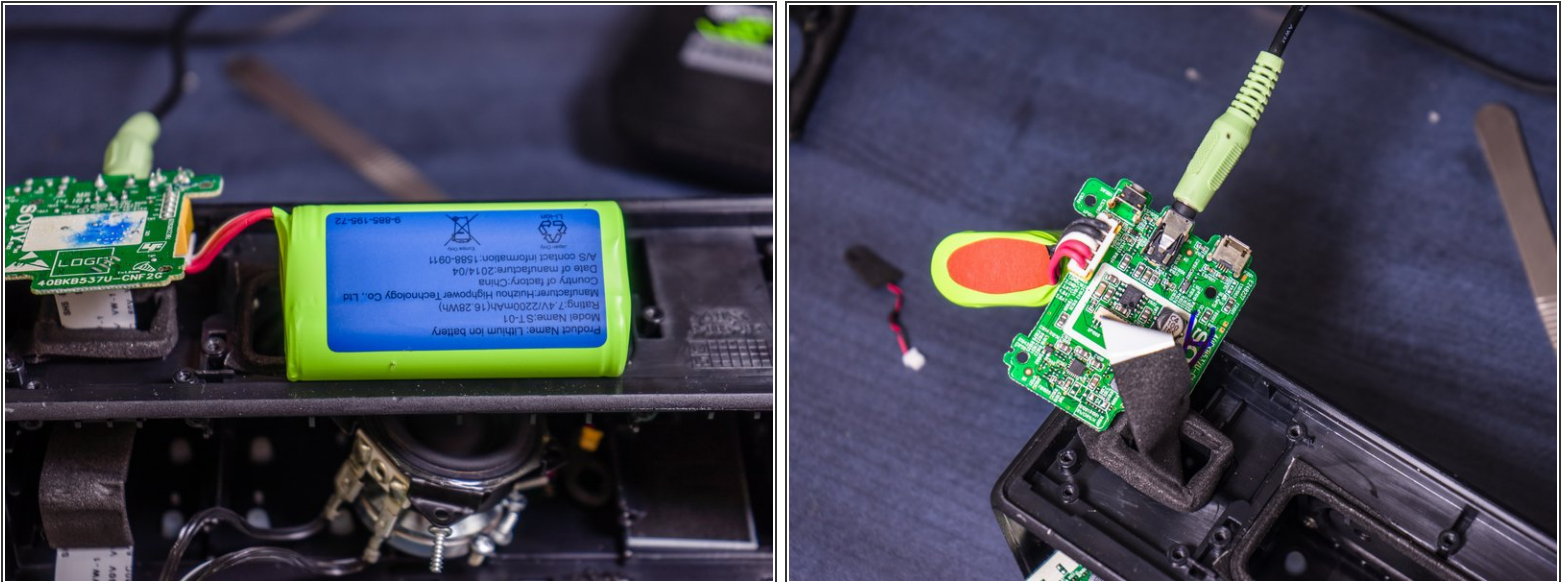
- Photos of the Main PCB. IC part numbers can be read off the photos.
- DC to DC power supply and Yamaha audio amp chip/output filter inductors are the main parts of this side

Step 3



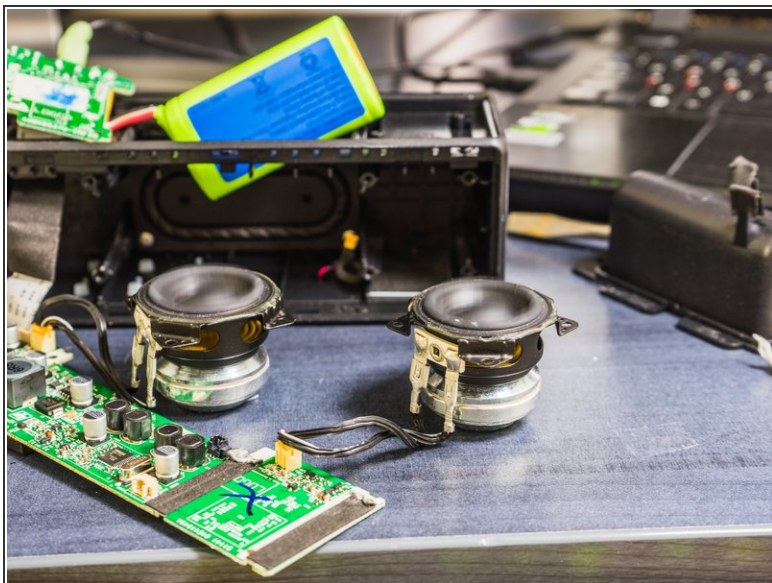
- More images of the main board assembly.
- The pinouts of the main flex are actually stated on the board which is a huge plus.
- A CSR Bluetooth SoC and MXIC flash are provided.

Step 4



- The battery pack is on a connector and can be removed before all of this is taken out.
- Battery is a 2 cell 18650 pack with protection built in; 7.4V

Step 5



- Two 7W speakers with strong magnets are included in this speaker; it is marketed with a 20W power output. Excursion is about 7-10mm at its peak.

Step 6



- Two passive radiators are present inside the device. They're fairly heavy but rubberized, and they resonate and are tuned for low frequency reproduction. These move a LOT when it's playing. 7-10mm per side.

