



# Samsung Captivate Motherboard Replacement

Motherboard malfunctions can cause a multitude...

Written By: Christopher



# INTRODUCTION

Motherboard malfunctions can cause a multitude of issues to transpire like disabling your phone to turn on even when properly charged, The device vibrates and turns on, but the screen remains blank, And or the device keeps turning on and off on its own.

Although difficult but if done carefully, these steps allow you to access, replace, and resolve your seeking issue with Samsung Captivate's Motherboard.

---

## TOOLS:

[iFixit Opening Tool](#) (1)

[Phillips #00 Screwdriver](#) (1)

[Phillips #000 Screwdriver](#) (1)

[Spudger](#) (1)

---

## Step 1 — Battery



- Remove the back cover by pressing on the bottom section of the phone and sliding the bottom piece downward.
- Lift up the back cover.

## Step 2



- Place your finger on the bottom of the battery and lift to remove.

## Step 3



- Replace the old battery with the new one.

## Step 4 — Rear Case



- Insert the spudger underneath the bottom section of the phone.
- Gently lift and push the spudger to slide the bottom section down to reveal two hidden screws.

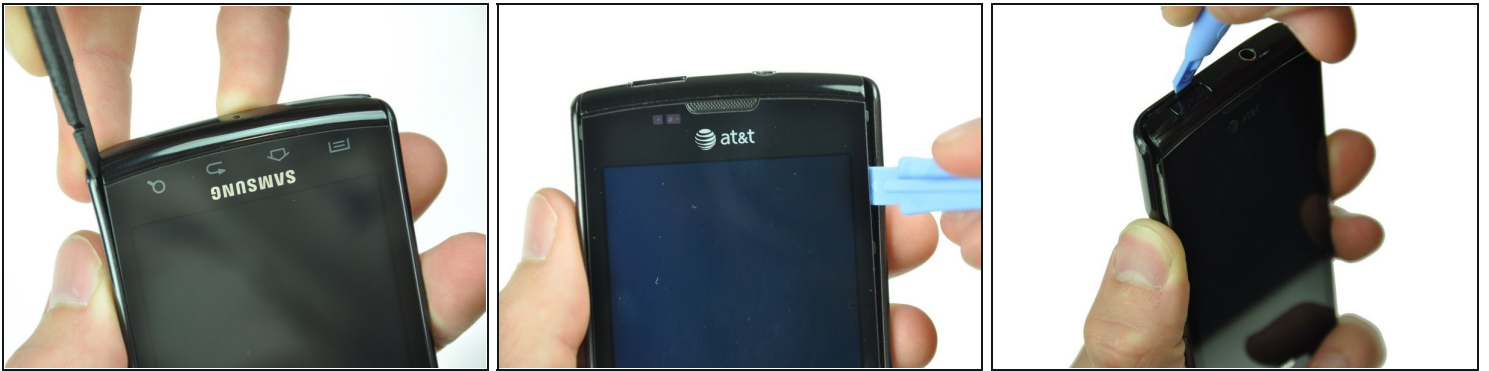
## Step 5



- Remove the six 4.5mm #000 Phillips screws.



## Step 6



- Starting at a bottom corner, use the spudger to separate the rear case from the front display.
- Move the spudger towards the top on both sides. The plastic opening tool is easier to use for this step.

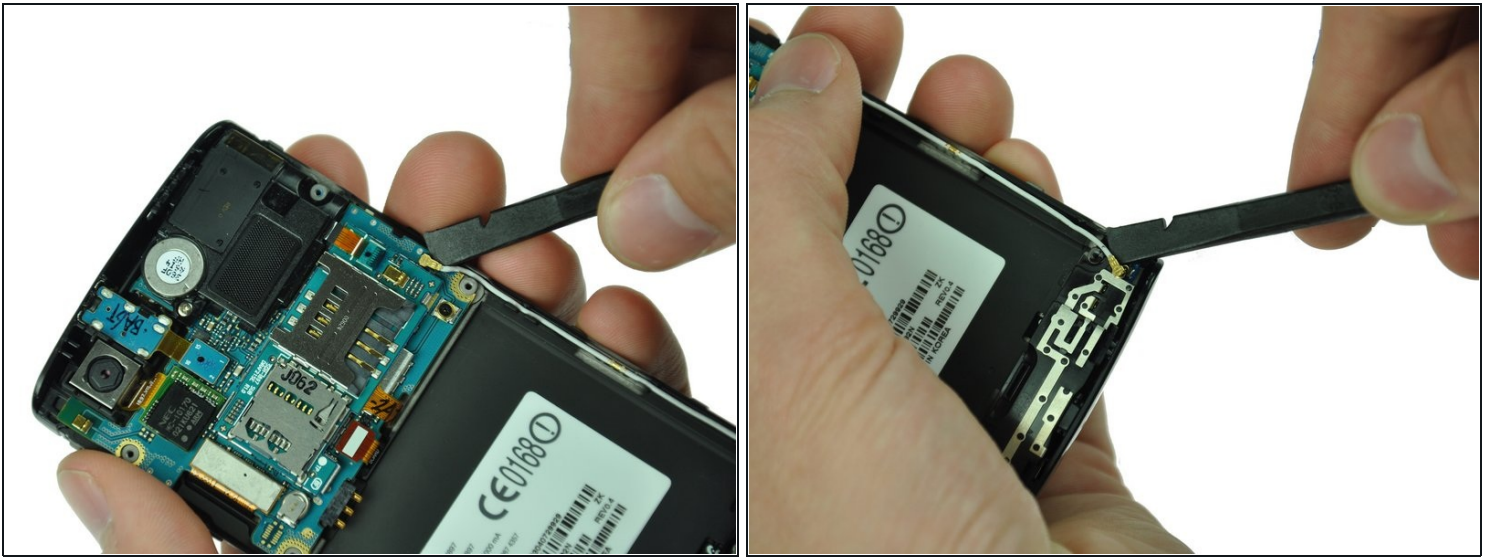
⚠ Be careful when detaching the top. Free each side, stopping short of the center of the cover. Apply backward pressure on both corners with a finger applying pressure on the center, and slide the whole back cover toward the bottom of the device. Note: forcing the cover can result in cracked plastic.

## Step 7



- Separate the rear case from the phone.

## Step 8 — Antenna Cable



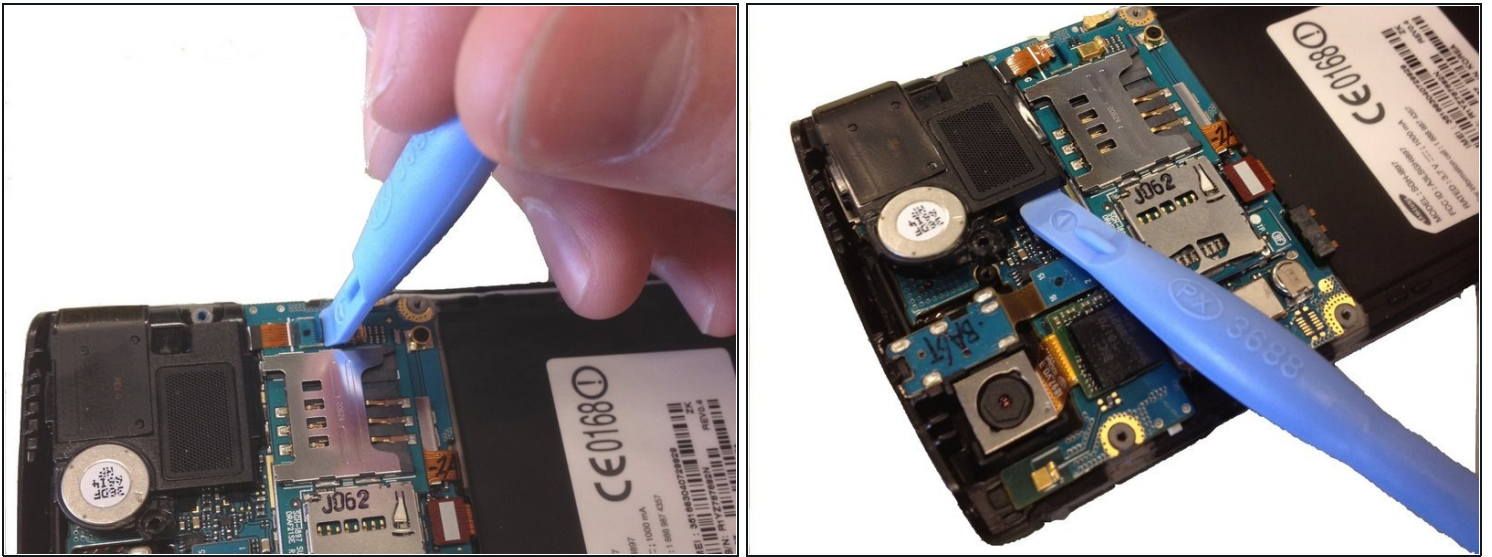
- Use a spudger tool to pry up the antenna cable from the connector on the motherboard.
- Pry up the other end of the cable from the connector on the antenna array.

## Step 9 — Speaker



- Use the Phillips 00 screwdriver to remove the single screw holding the speaker assembly to the LCD.

## Step 10

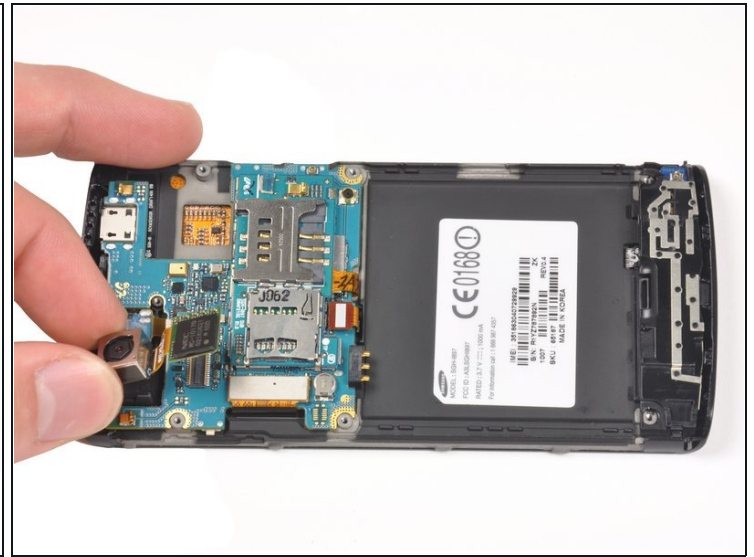


⚠ Use the plastic opening tool to lift the bottom tab of the plastic ribbon cable connector. Be careful not to use excessive force, you are only releasing the tab that holds the cable in.

- Pull out the ribbon cable.
- Use a spudger or plastic opening tool to lift up the speaker, and use your hands to remove it.



## Step 11 — Camera Assembly



- Lift up the black NEC chip with attached ribbon cable using either a spudger or plastic opening tool.
- Gently lift the camera assembly out of the plastic housing.

## Step 12 — Motherboard



- Using the spudger slide the tool under the three highlighted connectors to begin disconnection
- Excluding the motherboard socket, pry straight from up under the connectors, Therefore ending disconnection.

⚠ Be careful to not pry against the connector. Prying against could further damage to the device.



## Step 13



- Use your fingers to carefully lift up the Samsung Capivate's Motherboard from the assembly.

---

To reassemble your device, follow these instructions in reverse order.