



# LG K10 Loudspeaker Replacement

This repair guide will teach you how to replace...

Written By: Witrigs



# INTRODUCTION

This repair guide will teach you how to replace the loudspeaker component for an LG K10.



## TOOLS:

[Phillips #00 Screwdriver](#) (1)  
[iFixit Opening Picks \(Set of 6\)](#) (1)  
[Tweezers](#) (1)



## PARTS:

[LG K10 Loudspeaker Replacement](#) (1)

---

## Step 1 — Loudspeaker



- Power off the device.
- Remove the back case.

## Step 2



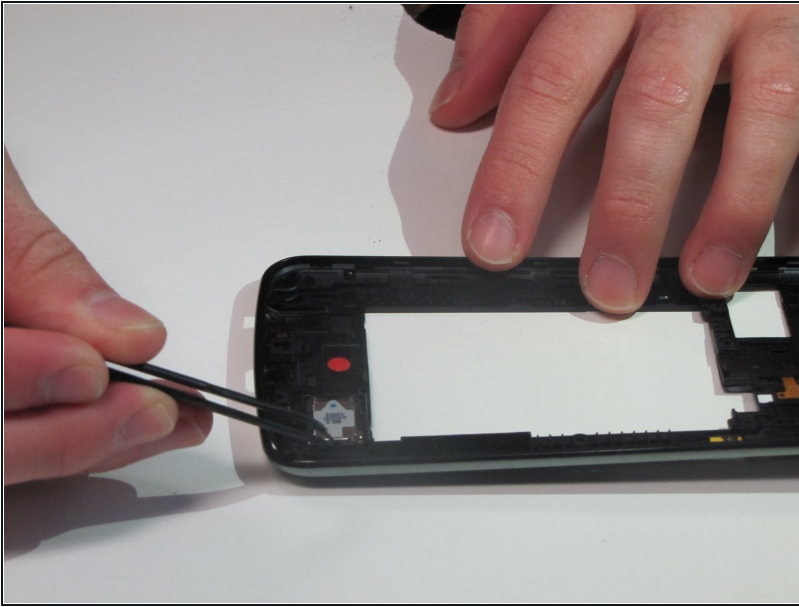
- Remove the battery

## Step 3



- Unscrew all of the mid-frame screws, and use opening picks or a plastic opener to carefully remove the frame.

## Step 4



- With [tweezers](#) remove the loudspeaker from the mid-frame.
- ① The loudspeaker is attached to the mid-frame with a thin layer of adhesive and should break free without much force.

---

To reassemble your device, follow these instructions in reverse order.