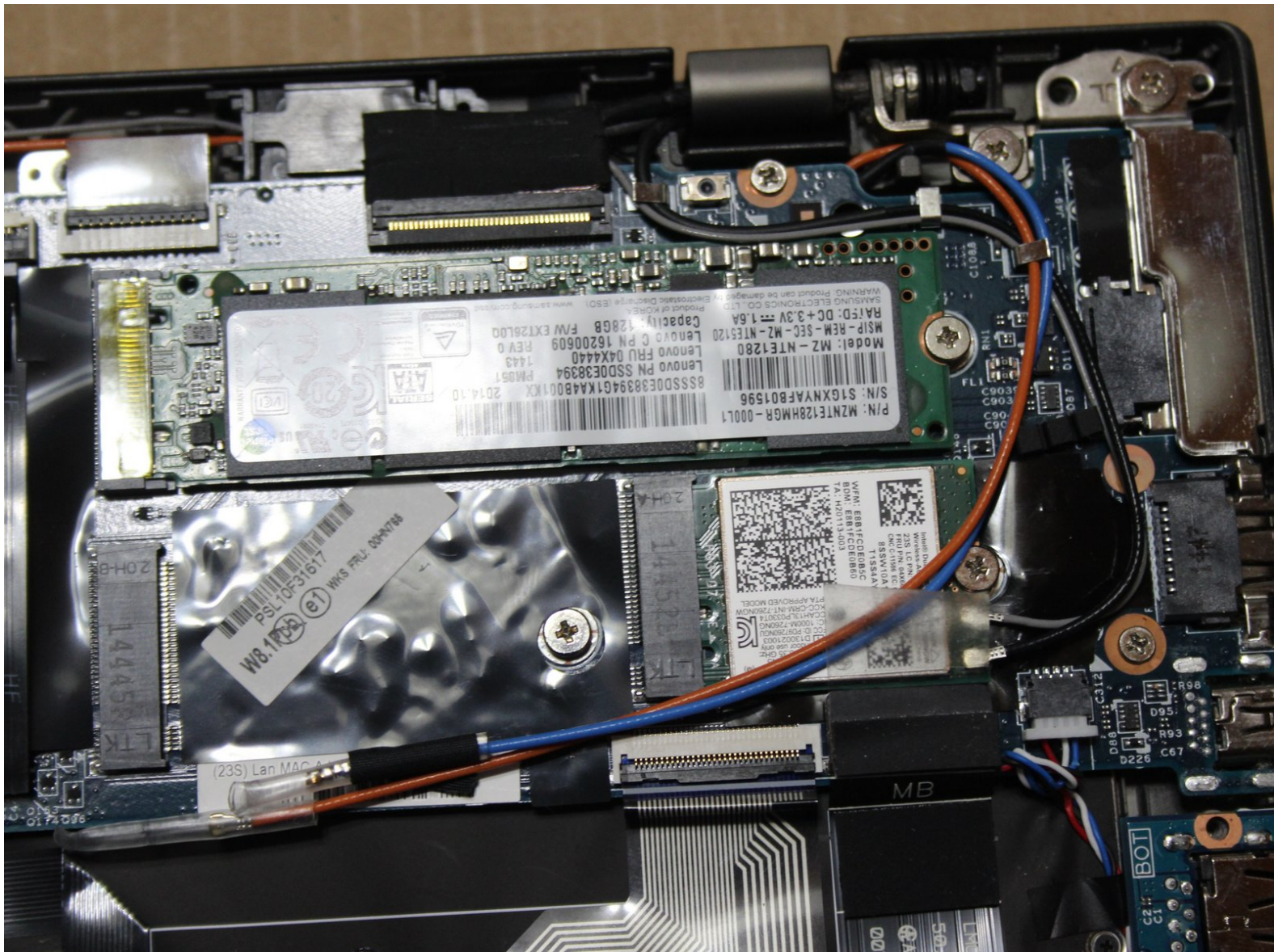




# ThinkPad X1 Carbon Wireless Card Replacement

This guide will walk you through replacing the wireless card in your ThinkPad X1 Carbon

Written By: Mike



---

## INTRODUCTION

In this guide, you will learn how to open the ThinkPad X1 Carbon and replace the wireless card.

---



### TOOLS:

- [Phillips #0 Screwdriver](#) (1)
  - [Spudger](#) (1)
-



## Step 1 — Loosen Cover Screws



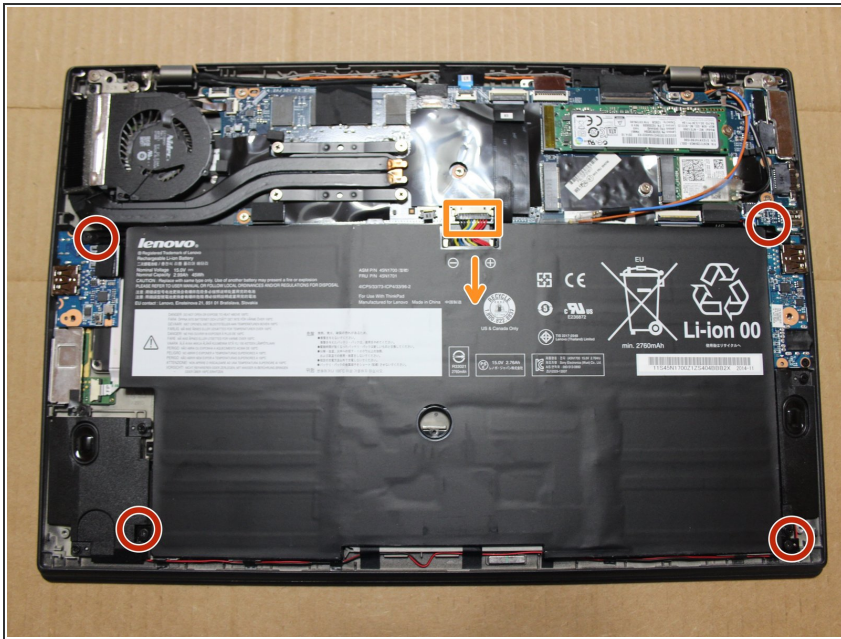
- Using the #0 Phillips screwdriver, loosen the seven cover screws. they will not come all of the way out.

## Step 2



- Using the spudger pop the cover loose and remove.

## Step 3 — Disconnect Battery



- ⚠ Use only plastic tools to disconnect battery cable
- Slide battery connector in the direction of the arrow to disconnect.
- ⓘ You can leave the battery or remove it using the red circles for the screw locations.

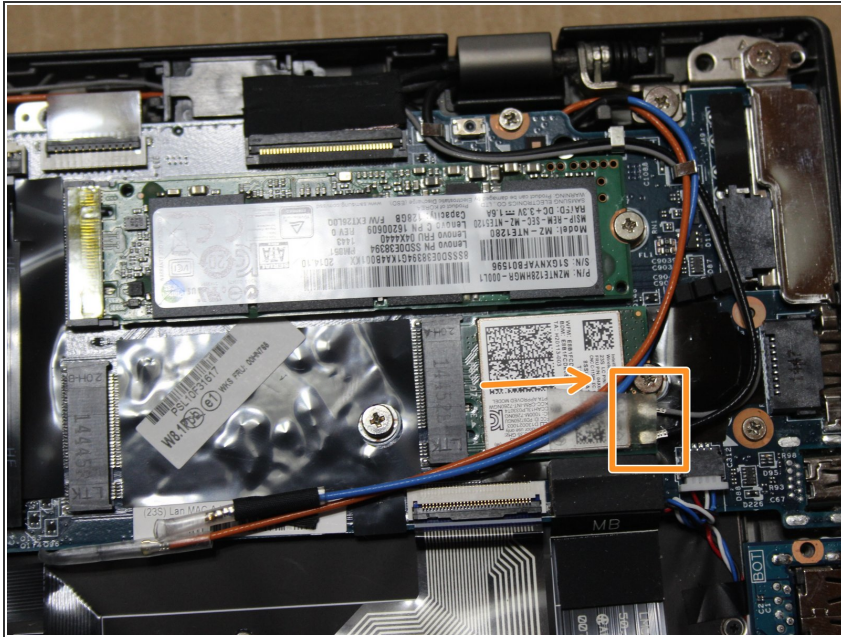
## Step 4



- Remove screw holding the wireless card in place.



## Step 5 — Remove Antenna Cables



- Carefully remove the antenna cables and slide out the card in the direction of the arrow.
- ❗ The gray connector is on the top. The black connector is closer to the battery.

To reassemble your device, follow these instructions in reverse order.