



BLU Studio 7.0 II Battery Connection

Prereq only; disconnect the battery before...

Written By: Abby



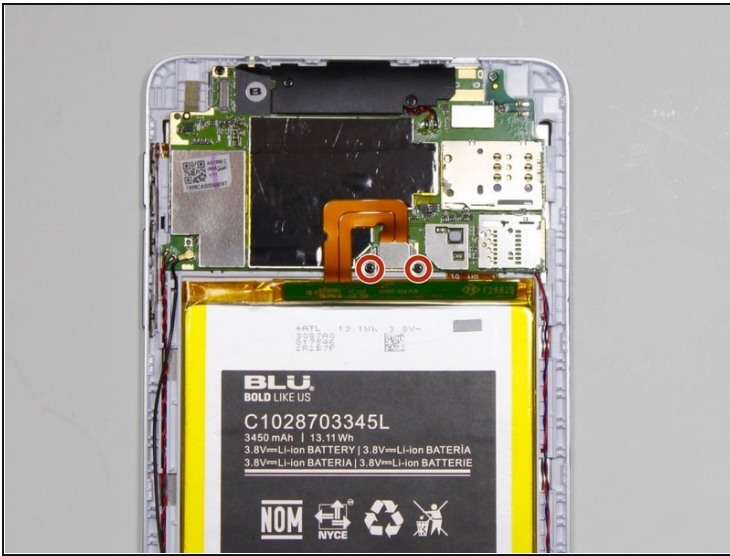
INTRODUCTION

Prereq only; disconnect the battery before anything else.

TOOLS:

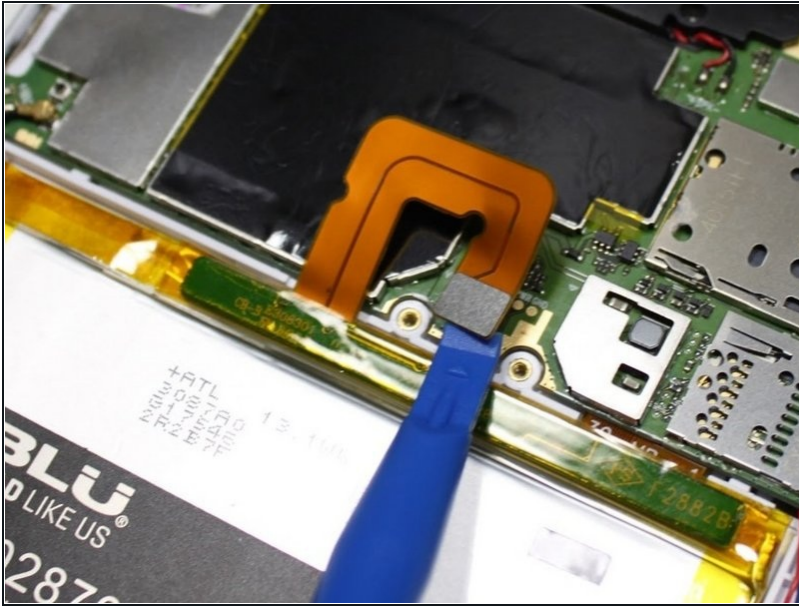
Phillips #00 Screwdriver (1)

Step 1 — Battery Connection



- Using the PH00 screw driver, remove the two 3mm screws.
- ① These screws may be covered by small, round black stickers. Remove the stickers to continue.
- Remove the metal clip that connects the battery ribbon to the motherboard by lifting up. Precision [tweezers](#) work best for this part.
- ☑ Be sure to only grab the metal clip with the tweezers, not the connector underneath.

Step 2



- Disconnect the battery connector using a plastic opening tool or the flat end of a spudger.

To reassemble your device, follow these instructions in reverse order.