



Written By: Smilzo



---

# INTRODUCTION

Follow this guide to fix your LCD display.



## TOOLS:

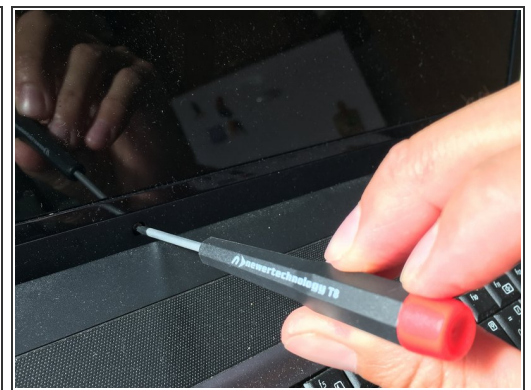
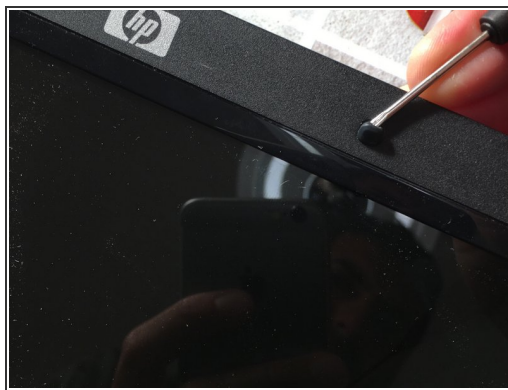
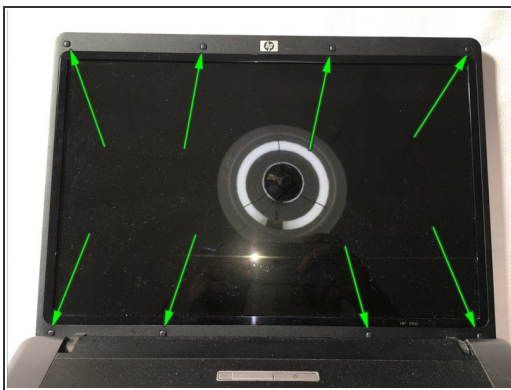
- [T15 Torx Screwdriver](#) (1)
  - [Cacciavite con testa a croce n. 1](#) (1)
-

## Step 1 — LCD display



- Remove the battery

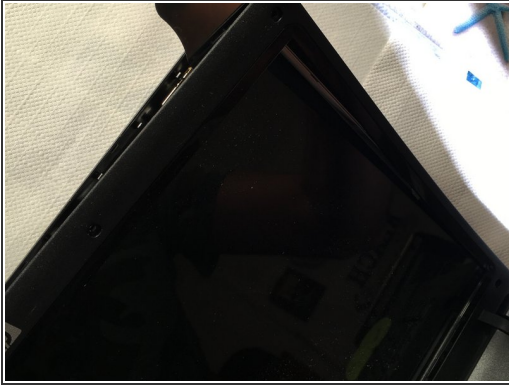
## Step 2



- Remove the 8 pads and the underlying screws

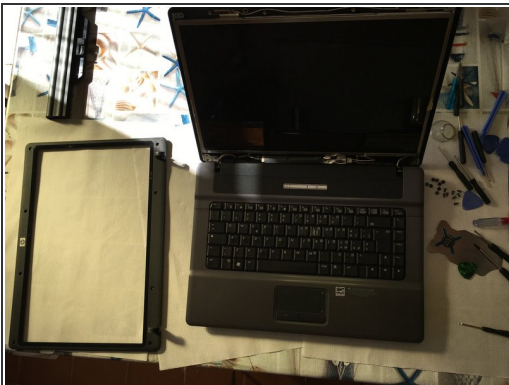


### Step 3



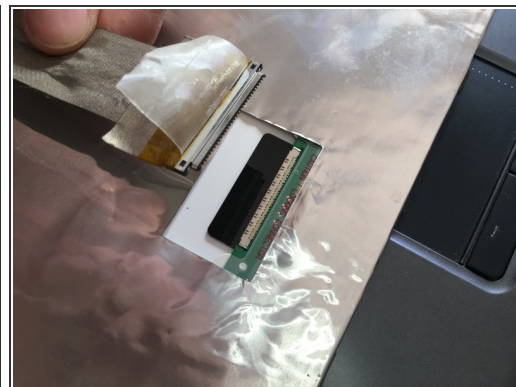
- Use a thin tool to separate the lcd frame
- Unhook the cover on the 2 hinges on the upper side

### Step 4



- Remove the LCD cover with delicacy, paying attention to the wires and removing any adhesive if present.
- Remove 4 lcd fixing screws on one side and 4 screws on the other
- Force the back cover slightly to access the last screw on both sides

## Step 5



- Disconnect the lcd panel connector
- Gently lay the LCD panel on the keyboard.
- Disconnect video display connector.

## Step 6



- Remove the LCD panel and replace with the new one

To reassemble the device, follow these instructions in reverse order.