



# Dell Inspiron 531 Graphics Card Replacement

Replace the graphics card in your Dell Inspiron 531 desktop.

Written By: Scott Havard



# INTRODUCTION

Are you trying to enhance your Dell Inspiron's graphics capabilities? Use this guide to replace your graphics card and let the visual splendor begin.

---

## TOOLS:

- [Phillips #0 Screwdriver](#) (1)
- [M3 Hex Nut Standoff Driver](#) (1)

*This driver is optional. It can be used to remove the Hex Nut Standoffs that hold the VGA and DVI adaptors into place.*

- [Large Needle Nose Pliers](#) (1)

*The pliers can be used to remove the hex nut standoffs that hold the VGA and DVI adaptors into place. This replaces the M3 Hex Nut Standoff Driver.*

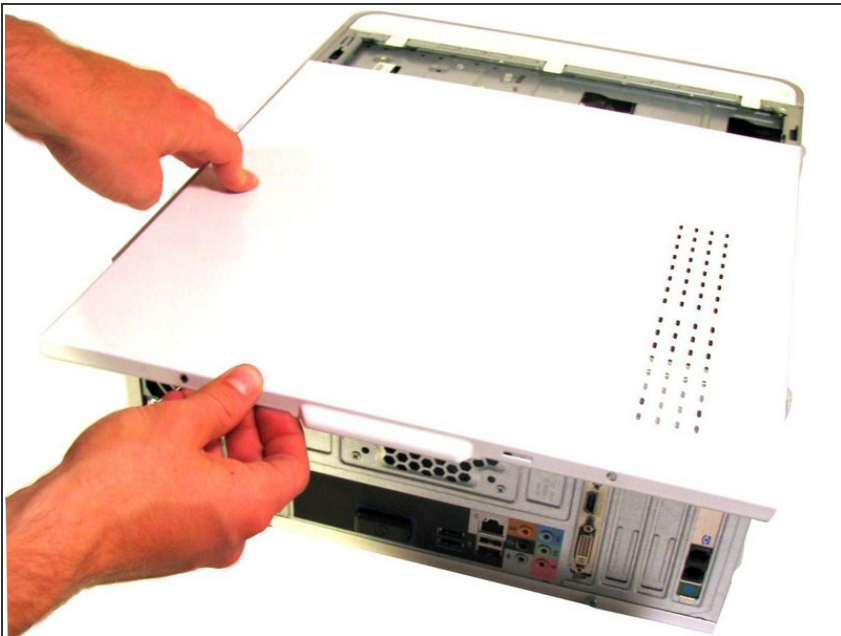
---

## Step 1 — Side Panel



- Place the desktop on its side. Make sure to place the computer on a soft but firm surface.
- Locate and remove the two screws that secure the side panel to the desktop:
  - Two 1/4" Phillips/slotted combination screws.

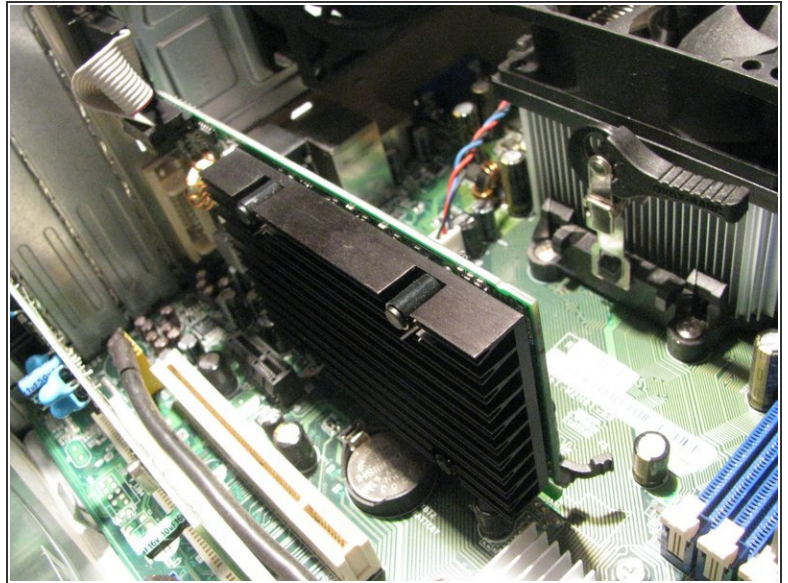
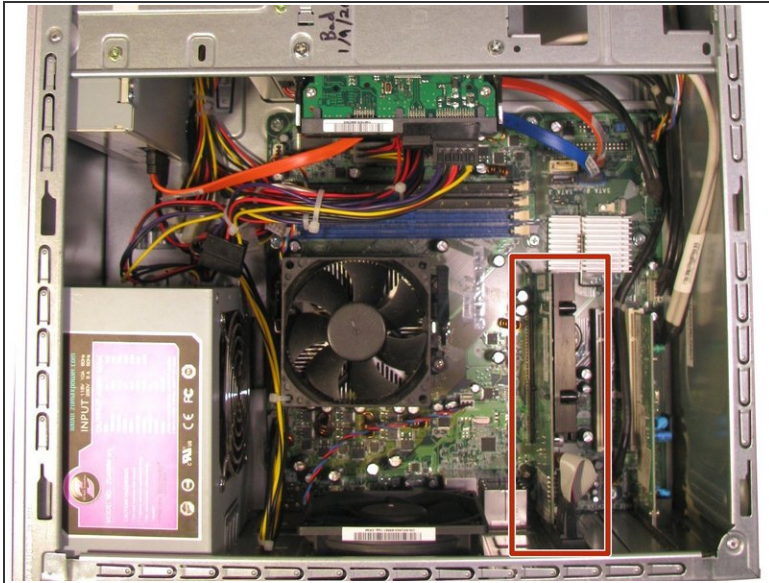
## Step 2



- Slide the side panel towards the back of the desktop in order to remove it.

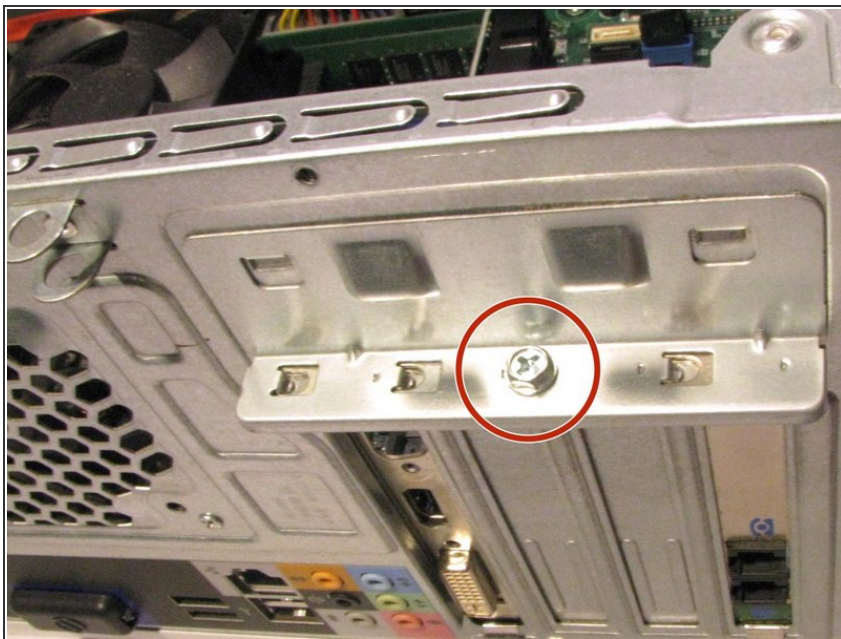


### Step 3 — Locating the Graphics Card



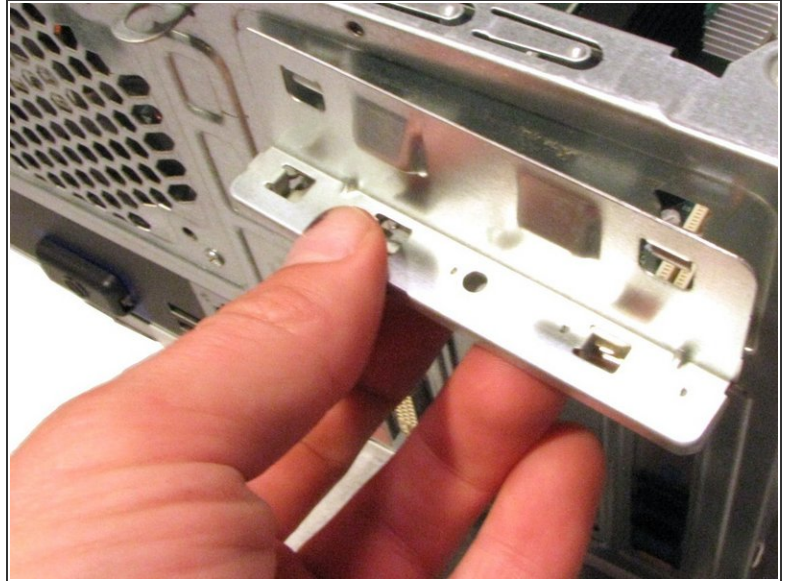
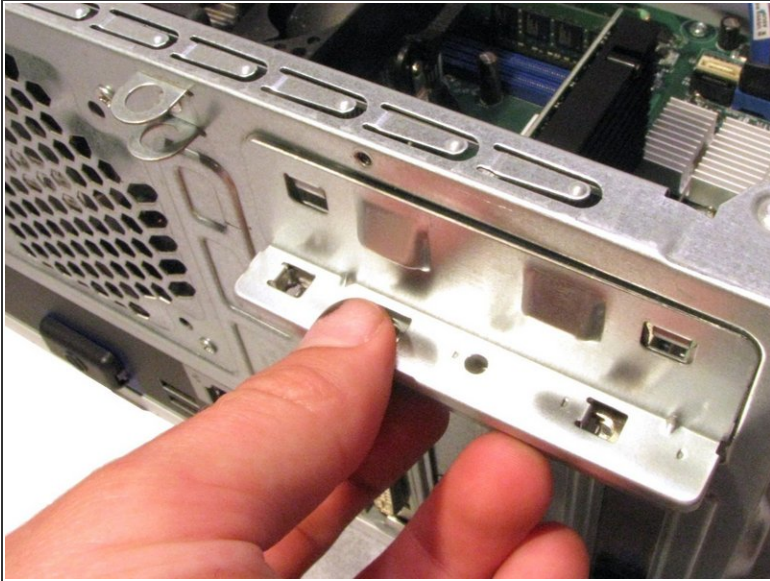
- The graphics card is attached to the back of the desktop.
- ⓘ The graphics card is located below the three fans.

### Step 4 — Support Bracket



- Remove the screw that secures the support bracket:
  - One 1/4" Phillips screw

## Step 5

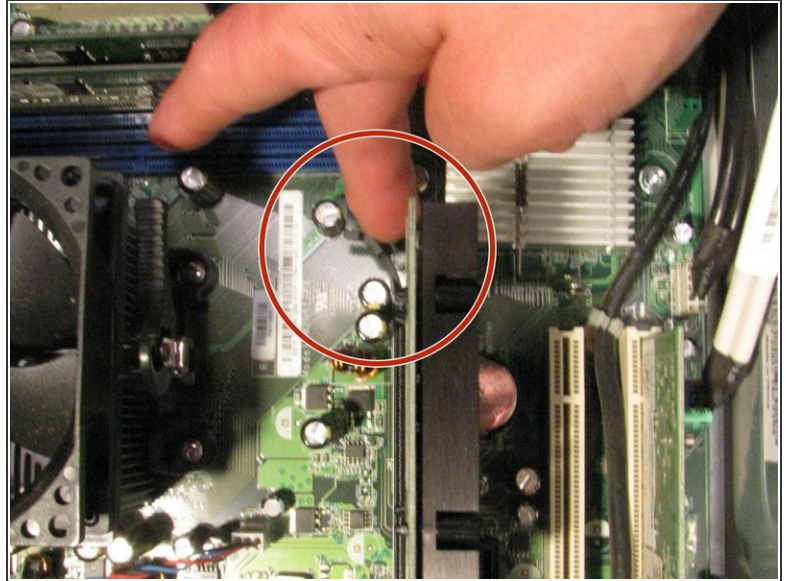
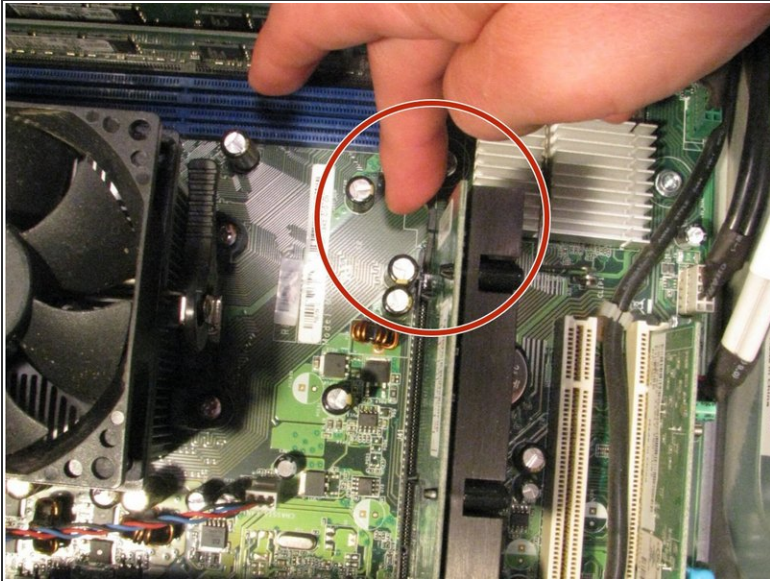


- Remove the support bracket by lifting up and out.

⚠ There are tabs that hold the bracket in place, therefor lifting up is an important detail.

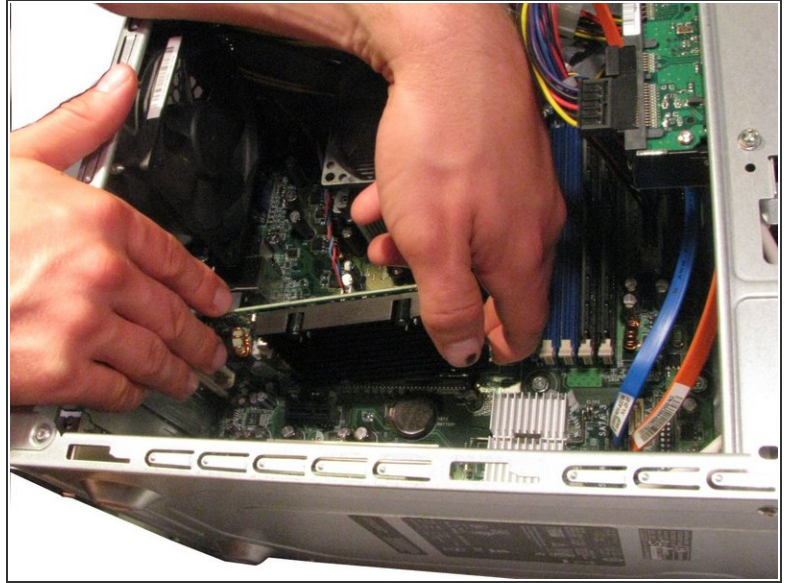
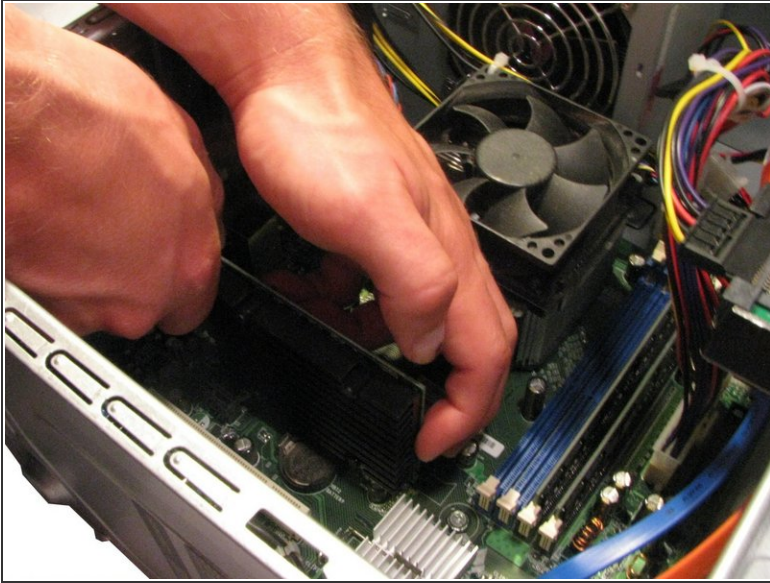


## Step 6 — Removing the Graphics Card



- Locate the push tab that locks the graphics card into place.
- Push the tab away from the graphics card and towards the fan.
- Hold the tab in this position through step 7.

## Step 7



- Keep the tab pushed away from the graphics card (see Step 6).
- Gently lift the graphics card up and out of the desktop.

To reassemble your device, follow these instructions in reverse order.