



# Sony Dream Machine Speaker Replacement

Replace a the speaker in your Sony Dream Machine.

Written By: Skylar Caststeel



## INTRODUCTION

Replace a broken speaker in the Sony Dream Machine alarm clock.



### TOOLS:

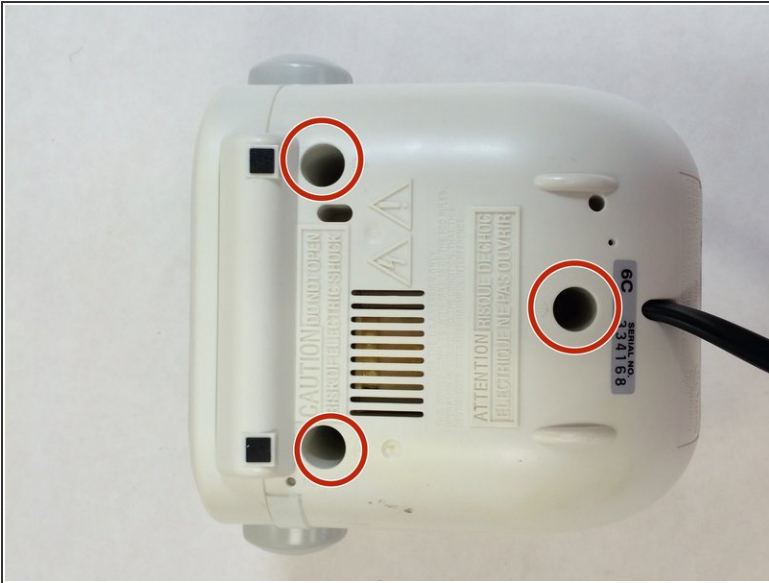
- [Phillips #2 Screwdriver](#) (1)



### PARTS:

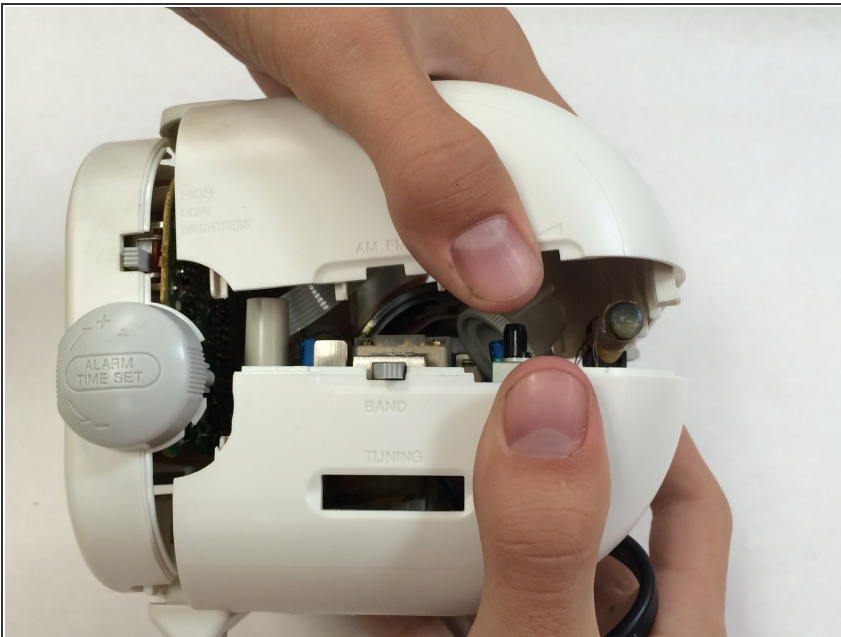
- [Speaker](#) (1)

## Step 1 — Speaker



- Unscrew the screws located here with a Phillips head screwdriver.

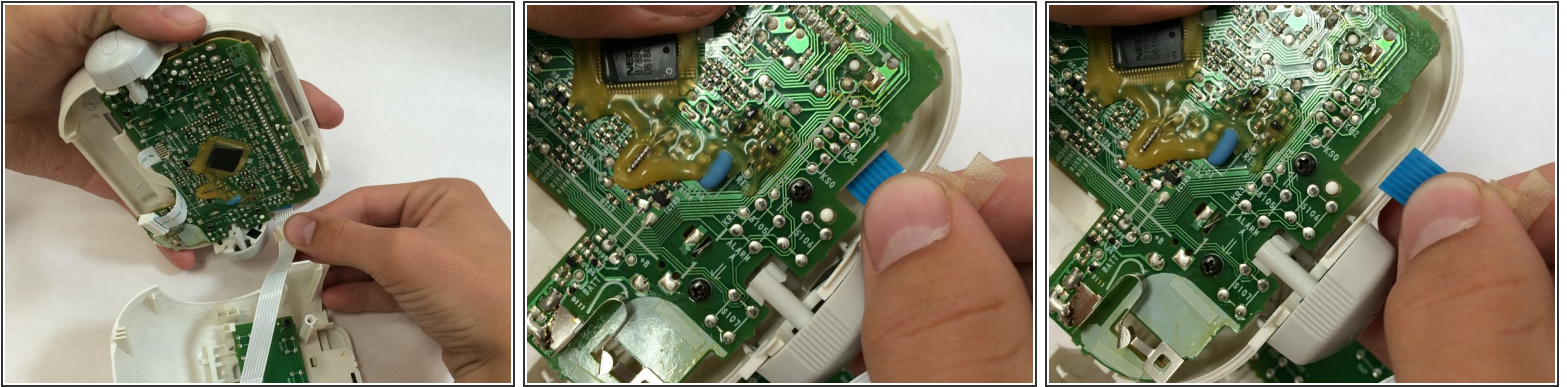
## Step 2



- Open the alarm's casing.

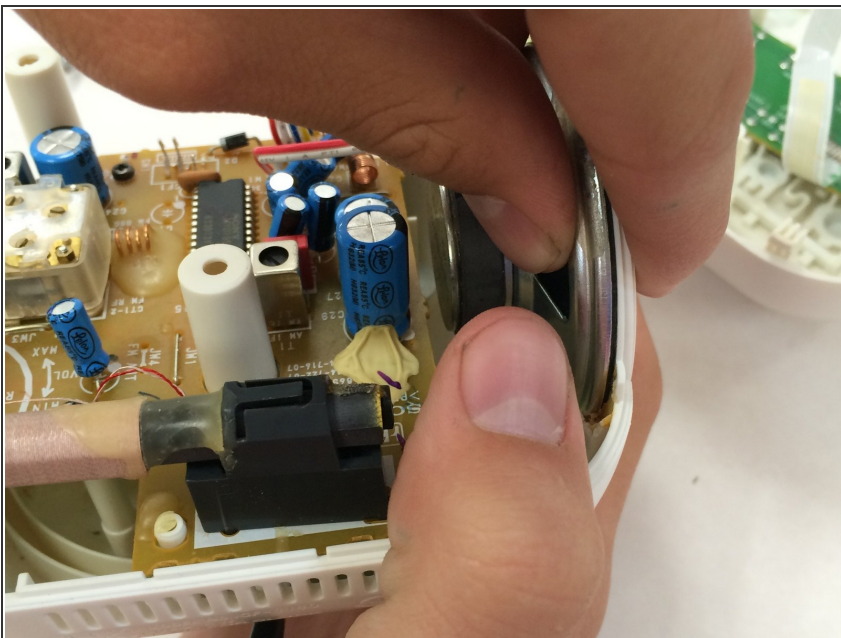


## Step 3



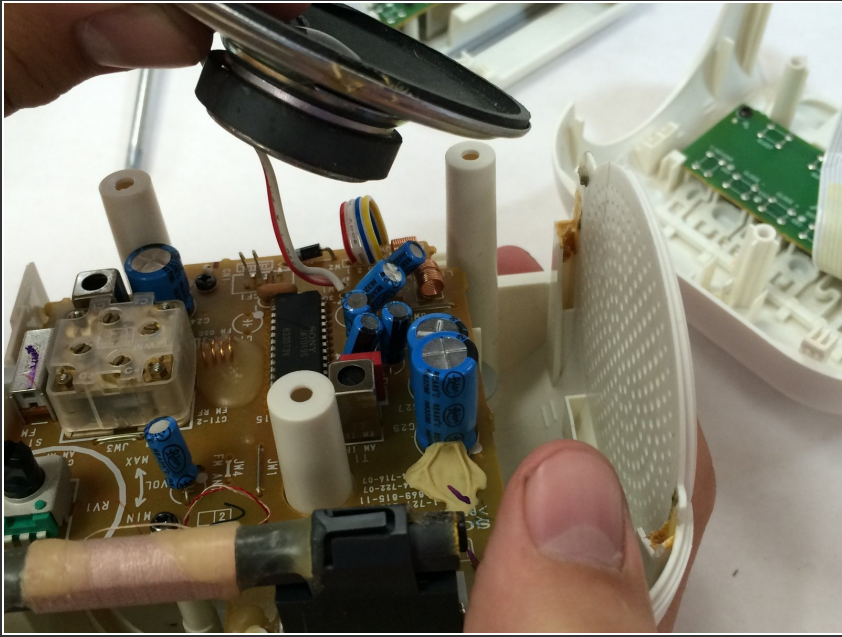
- For the product's safety, remove the ribbon cable shown.

## Step 4



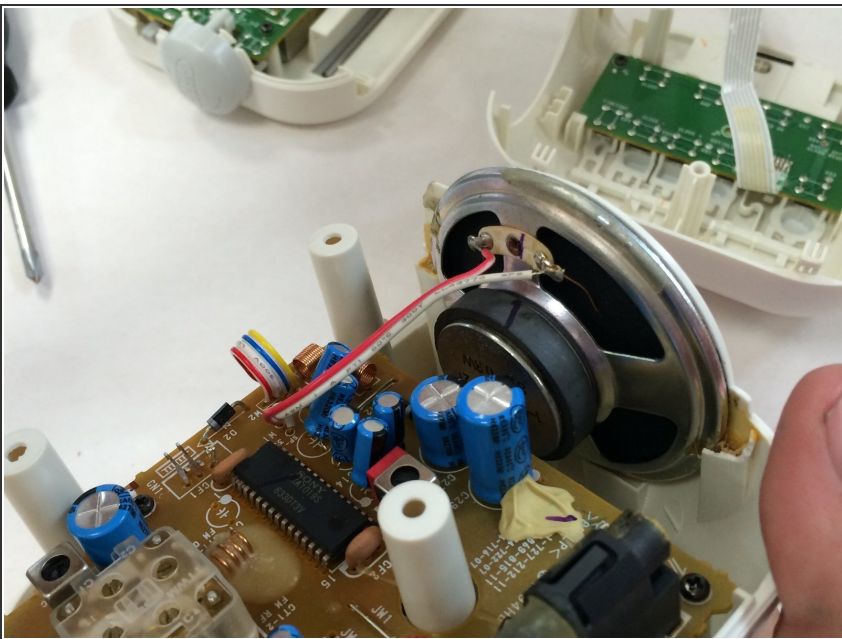
- Locate the speaker and desolder the contact points.

## Step 5



- Remove the broken speaker.

## Step 6



- Place the new speaker in the slot and resolder the contact ports.

To reassemble your device, follow these instructions in reverse order.