



# Sony Dream Machine ICF-C180 Speaker Replacement

Fixing a broken speaker in a White Sony Dream Machine AM FM Clock Radio Alarm Model ICF-C180.

Written By: Caleb John



This document was generated on 2020-11-21 07:10:41 AM (MST).

---

## INTRODUCTION

Fixing a broken speaker in a White Sony Dream Machine AM FM Clock Radio Alarm Model ICF-C180.

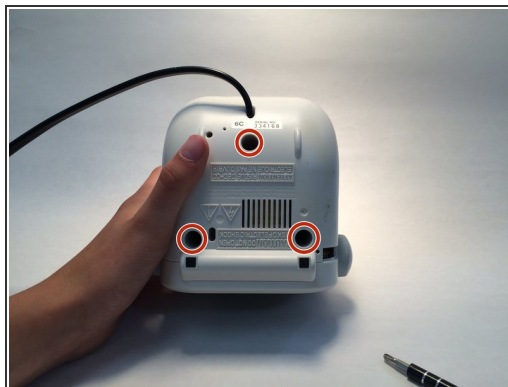
---



### TOOLS:

- [Essential Electronics Toolkit](#) (1)
  - [Soldering Iron](#) (1)
-

## Step 1 — Speaker



- Detach the top of the plastic casing. Use a Phillips head screwdriver to unscrew the three bottom screws.

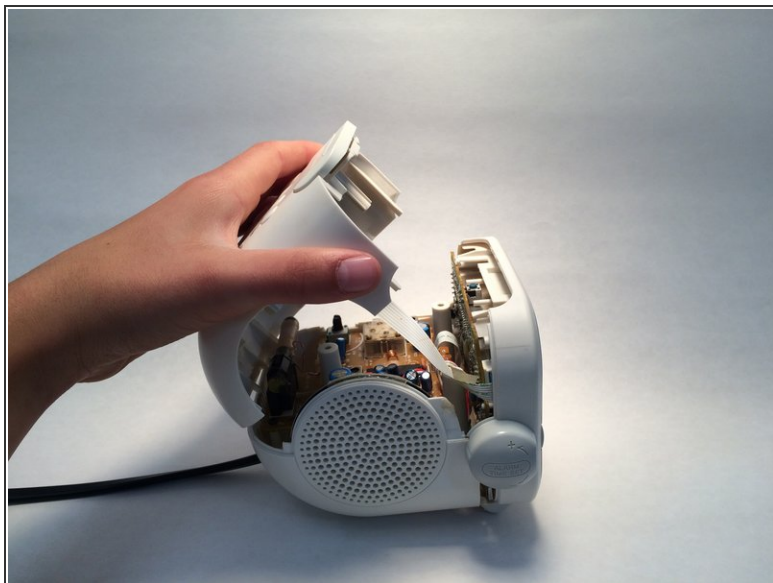
## Step 2



- Wedge a plastic opening tool between the face of the clock and the body.
- Pry open the face of the clock away from the body.



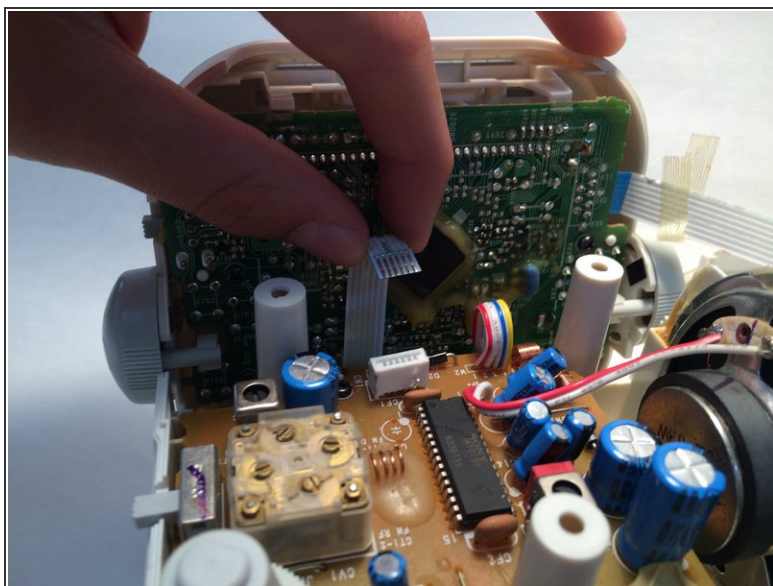
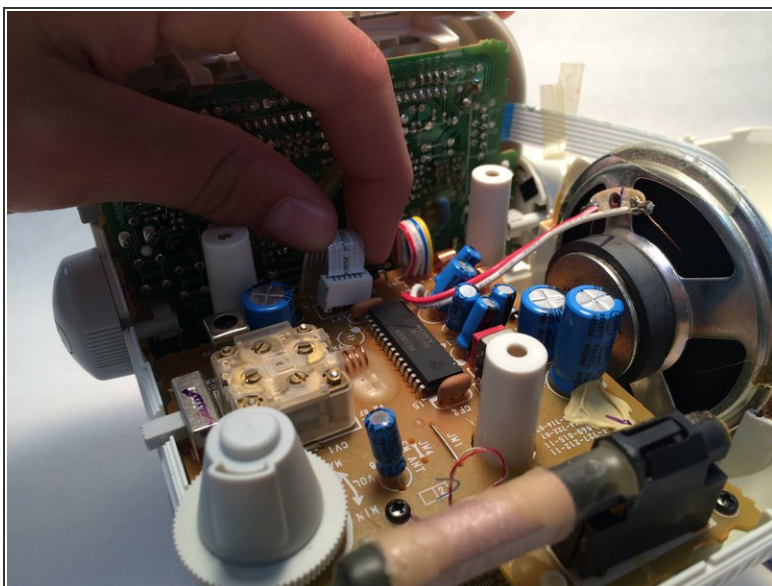
## Step 3



- To open the top casing, pull it upward.

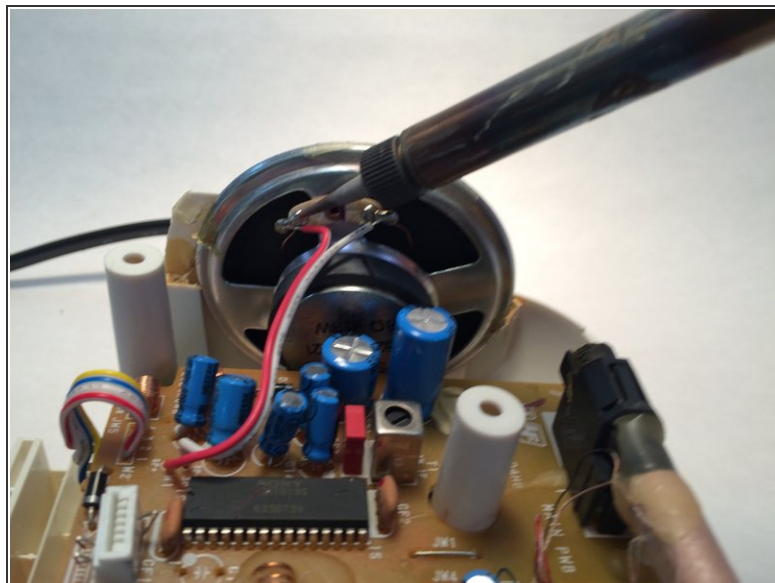
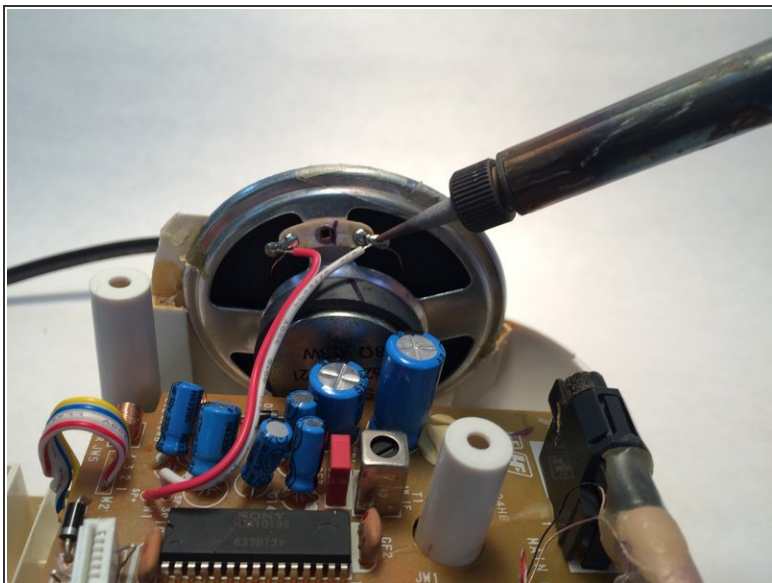
⚠ Be careful not to yank on the ribbon cable when pulling on the top casing.

## Step 4



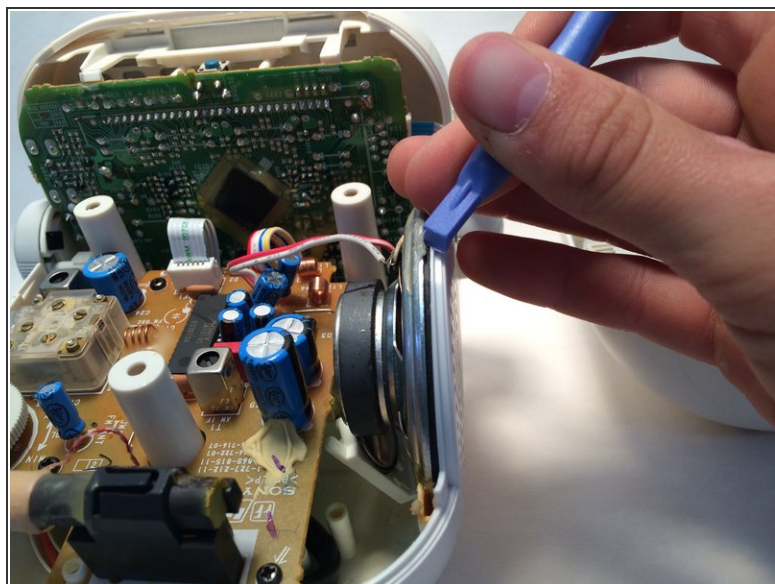
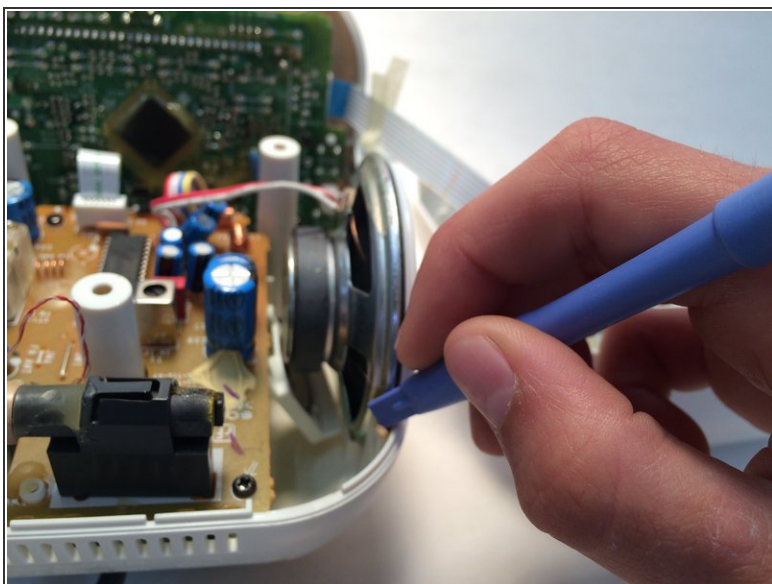
- Pull upward on the blue and white ribbon cables to remove them. This will make it easier to remove the speaker.

## Step 5



- Desolder the wires going to the speaker with a soldering iron.

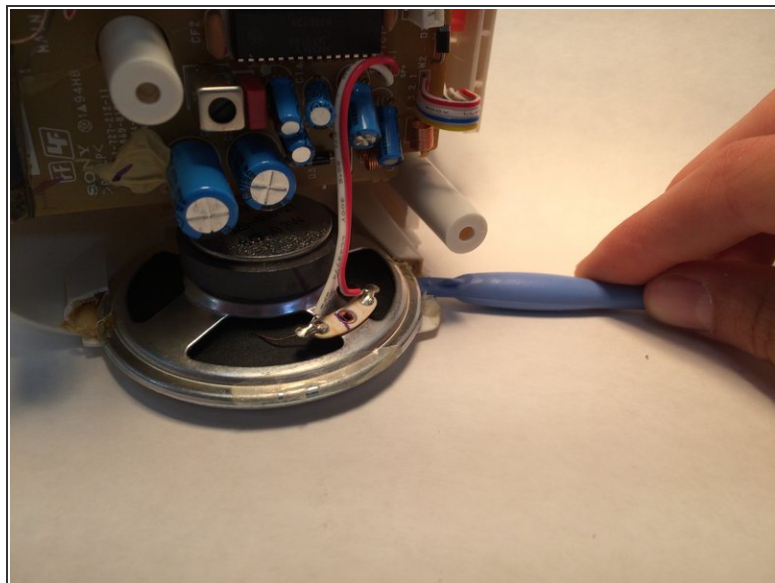
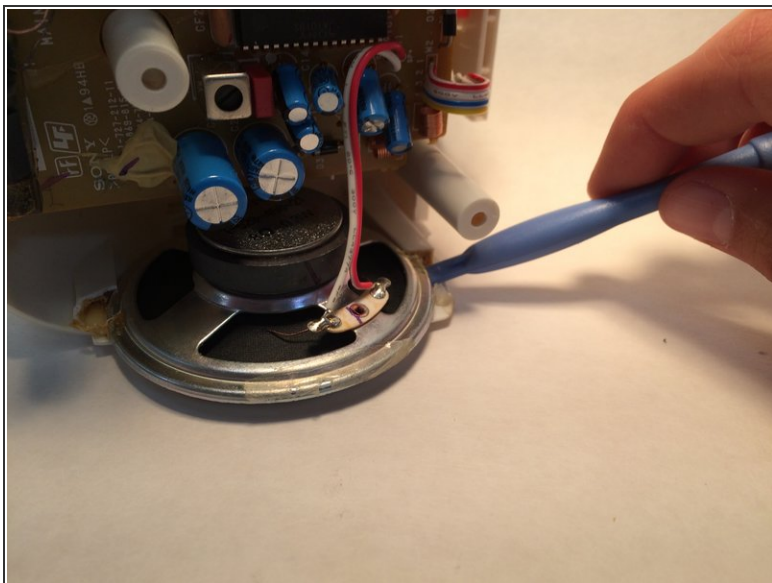
## Step 6



- Use the plastic opening tool to remove the glue from the speaker.

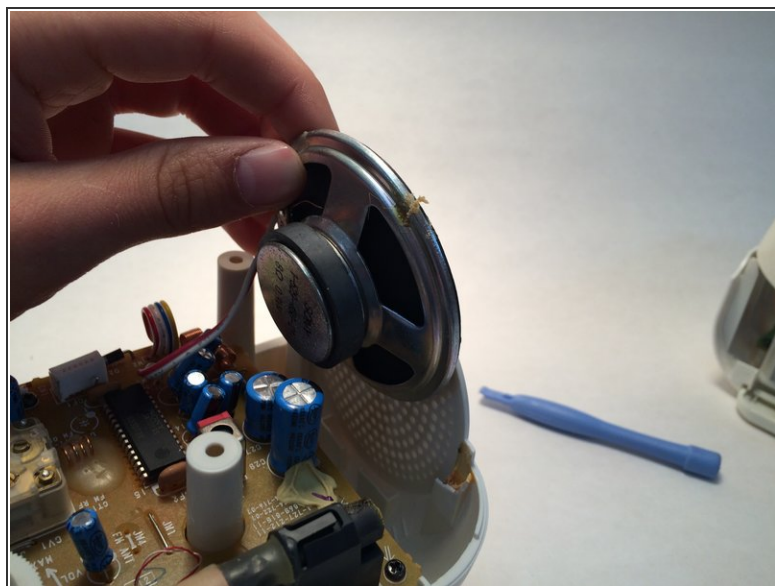
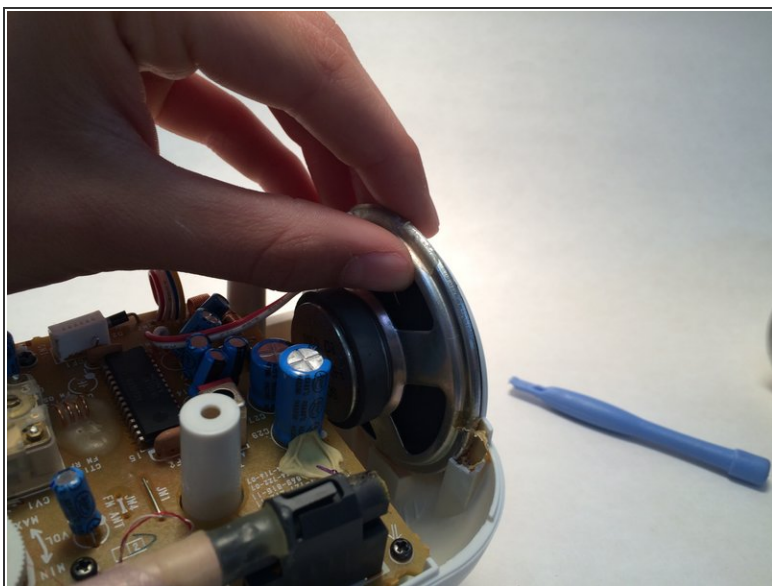


## Step 7



- Loosen the speaker from the remaining glue with a plastic opening tool.
- Insert the plastic opening tool into the rail that holds the speaker and push down.

## Step 8



- Pull the speaker upward to remove it.

To reassemble your device, follow these instructions in reverse order.