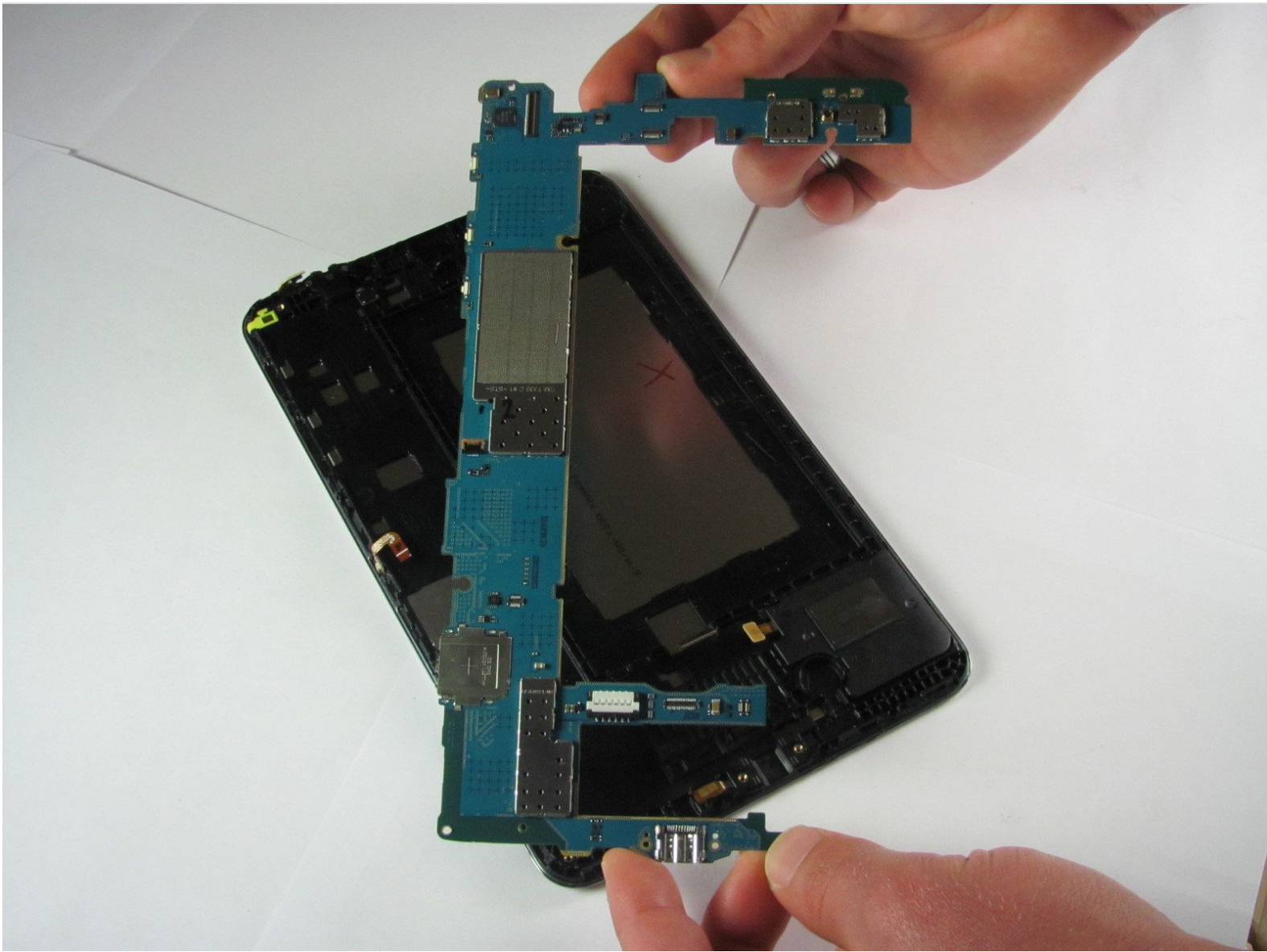




Samsung Galaxy Tab 4 8.0 Wi-Fi Motherboard Replacement

In this guide, we will be replacing the motherboard; the main functioning component of the device. Many technical issues can be caused by a defective motherboard; so simply follow along, and you'll have it replaced in no time.

Written By: Jonathan Wharton



INTRODUCTION

Replacing the Motherboard is the most complex replacement for the tablet. It utilizes most of the steps from other guides, like battery, front facing, and rear facing camera removals.



TOOLS:

- [Spudger](#) (1)
- [Heavy-Duty Spudger](#) (1)
- [iFixit Opening Tools](#) (1)
- [Tweezers](#) (1)
- [Phillips #000 Screwdriver](#) (1)
- [Paper Towels](#) (1)



PARTS:

- [Galaxy Tab 4 8.0 Wi-Fi Motherboard](#) (1)

Step 1 — Rear Case



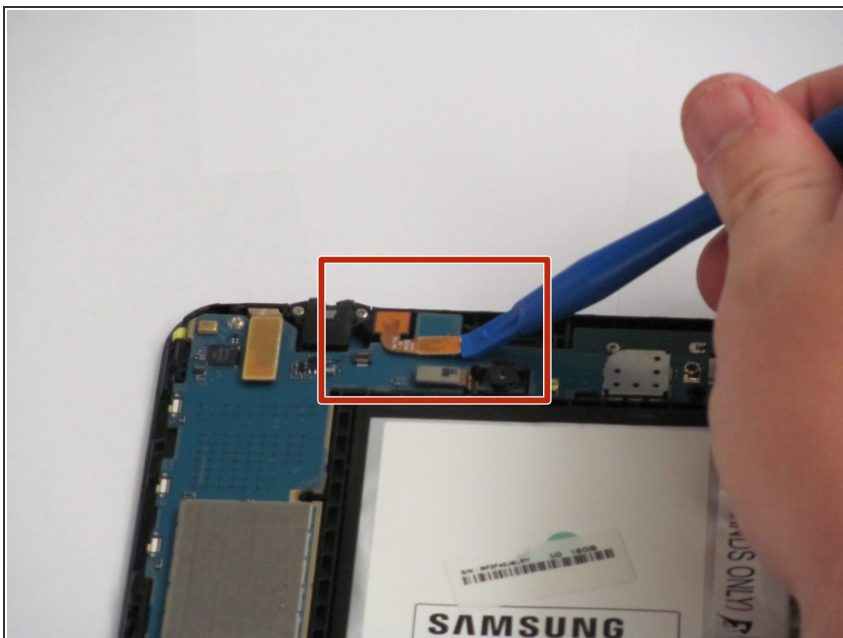
- ⓘ Before you begin the replacement process, make sure the tablet is completely powered off.
- Gently insert the plastic opening tool between the metal rim and the back plastic casing at the bottom of the tablet and pry the back casing away from the device. Continue to separate the back panel of the device from the front assembly.
- ⓘ Right-handed users will probably be more comfortable prying in a clockwise movement, while left-handed users will feel more comfortable doing a counter clockwise movement.
- ⓘ When taking off the rear case there will be periodic clicking noises. Do not worry about those noises. They are just the rear case being disconnected.
- ⚠ Be careful not to use too much force as the plastic clips can easily be broken.

Step 2



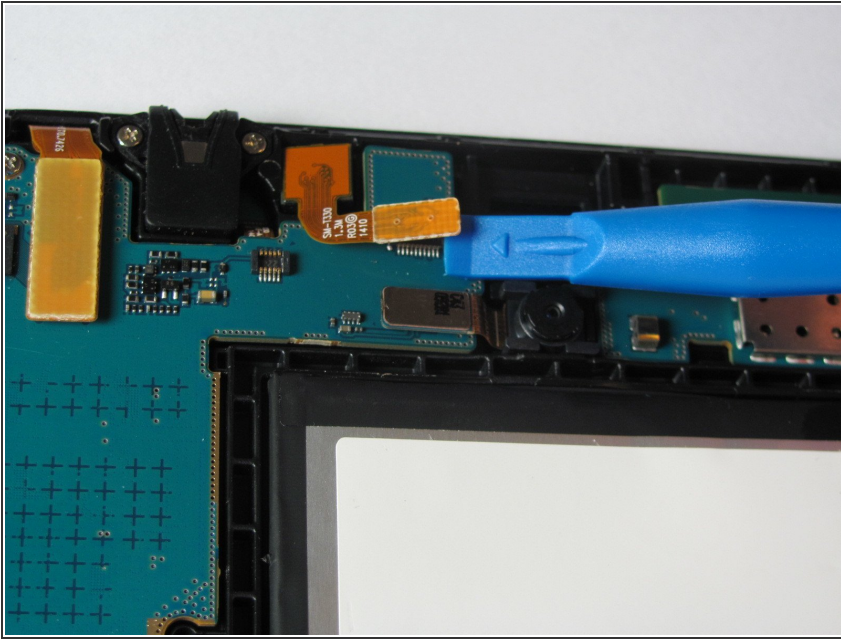
- Place the tablet screen down on a clean surface.
- Grasp the back panel and lift it from the device.

Step 3 — Front Facing Camera



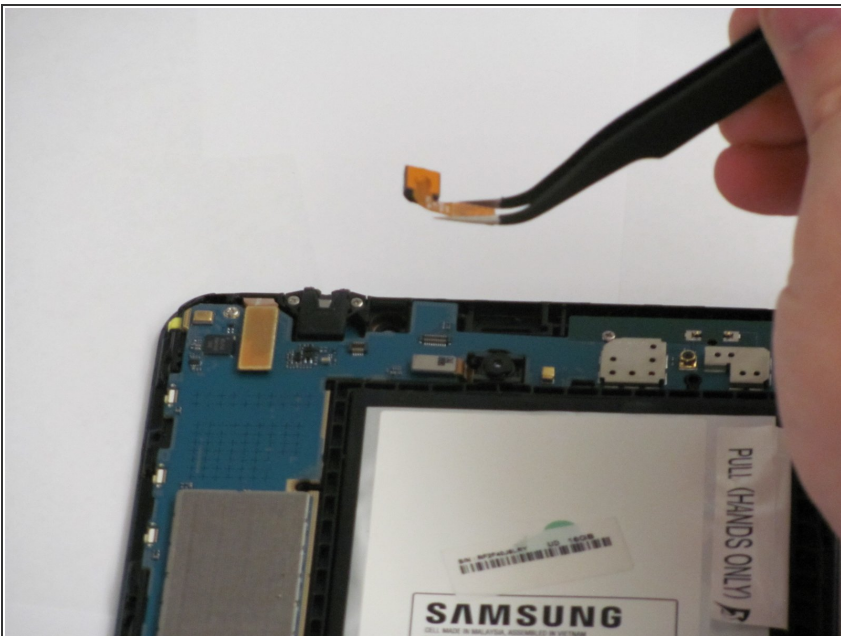
- The front facing camera's ribbon cable is located at the top edge of the motherboard, slightly left of center.
- Slide the flat end of the blue plastic opening tool underneath the connector at the end of the ribbon cable.

Step 4



- Slightly apply pressure and move the blue plastic opening tool downwards to pop the front camera's gold rectangular connector from its socket on the motherboard.

Step 5



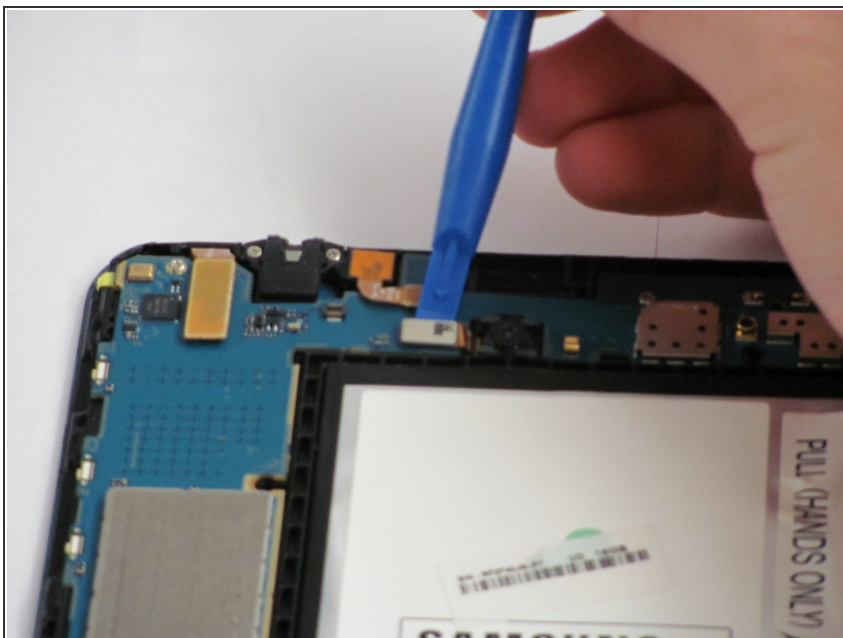
- Squeeze the gold rectangular piece with the tweezers to gently lift it from its pit.

Step 6 — Rear Facing Camera



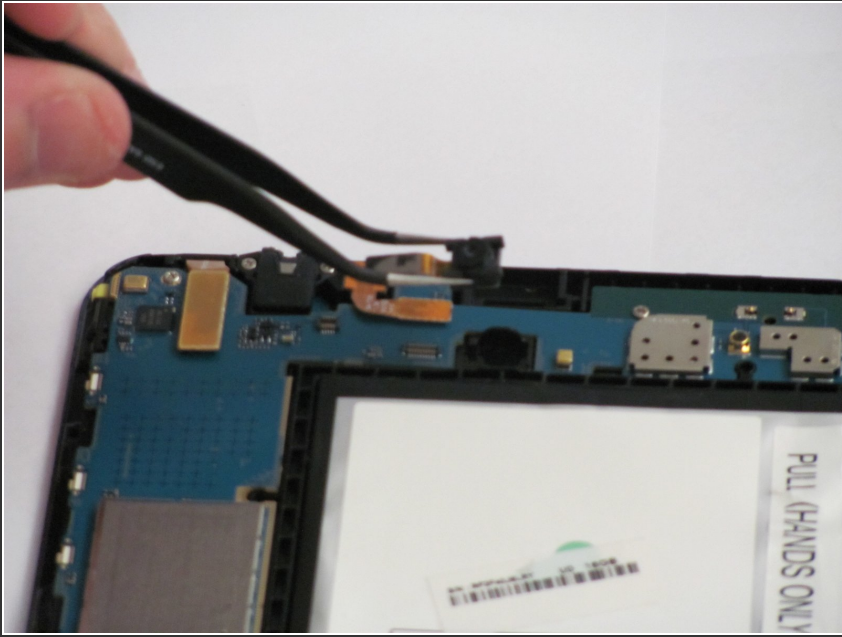
- The rear facing camera will be located just to the right and below the front facing camera, near the top and center of the motherboard.

Step 7



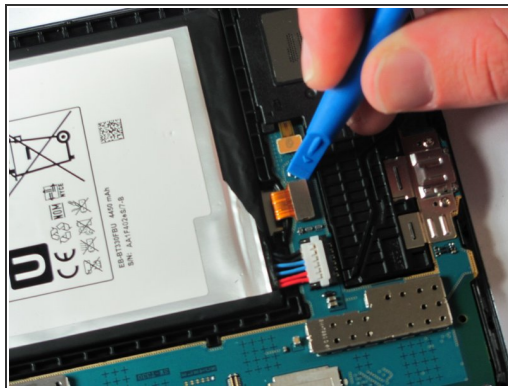
- Slide the flat end of the blue plastic opening tool underneath the rectangular metal connector of the rear facing camera.
- Apply slight pressure outwards until the camera's metal connector pops from its socket on the motherboard.

Step 8



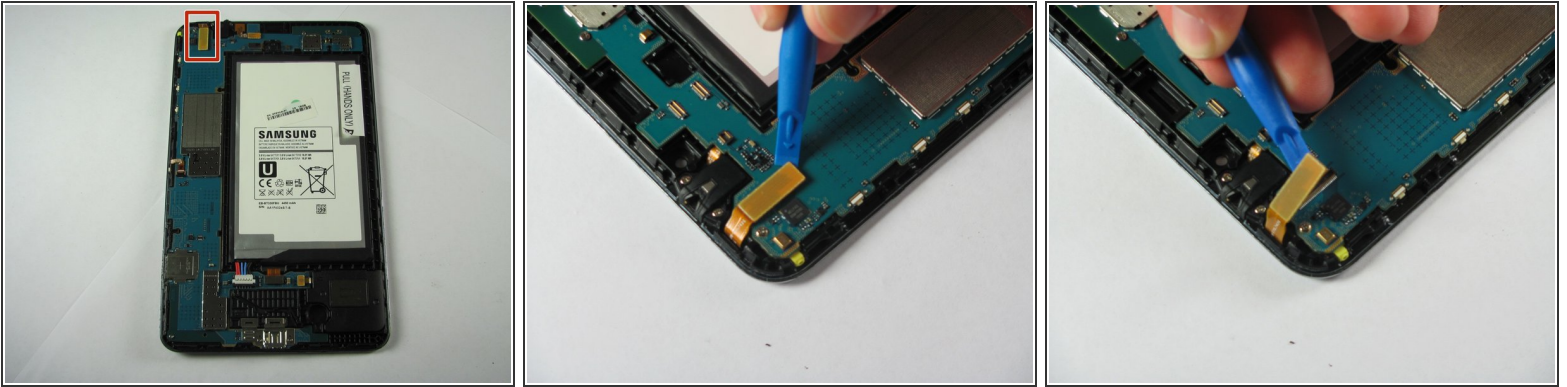
- Remove the camera from it's housing with your tweezers.

Step 9 — Motherboard




- Slide the opening tool underneath the connector and apply slight pressure upwards and outwards until the metal connector pops from its socket on the motherboard.
- ⓘ Device has been rotated 90 degrees counter-clockwise.

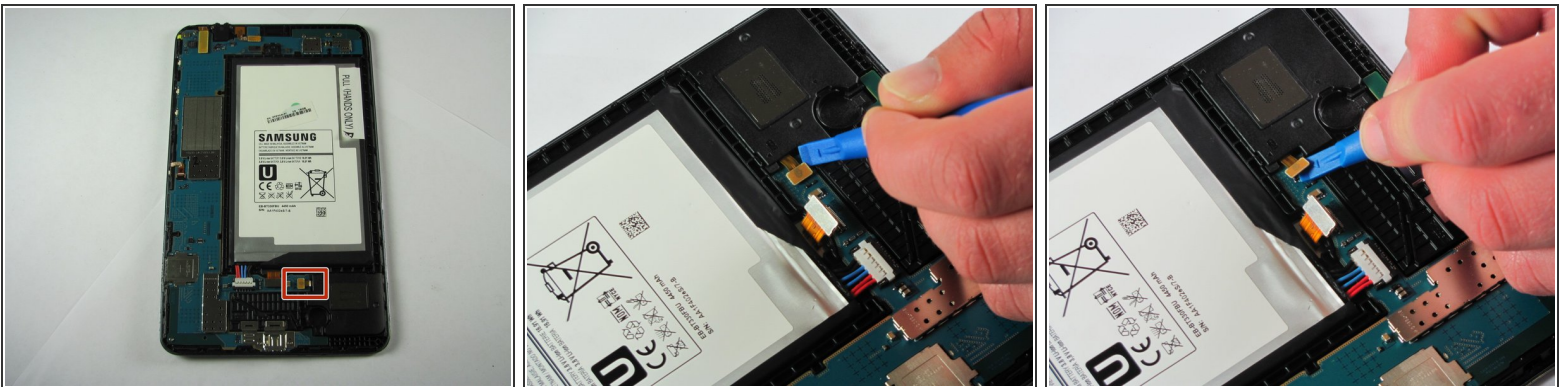
Step 10



- Slide the opening tool underneath the connector and apply slight pressure outwards until the gold connector pops from its socket on the motherboard.

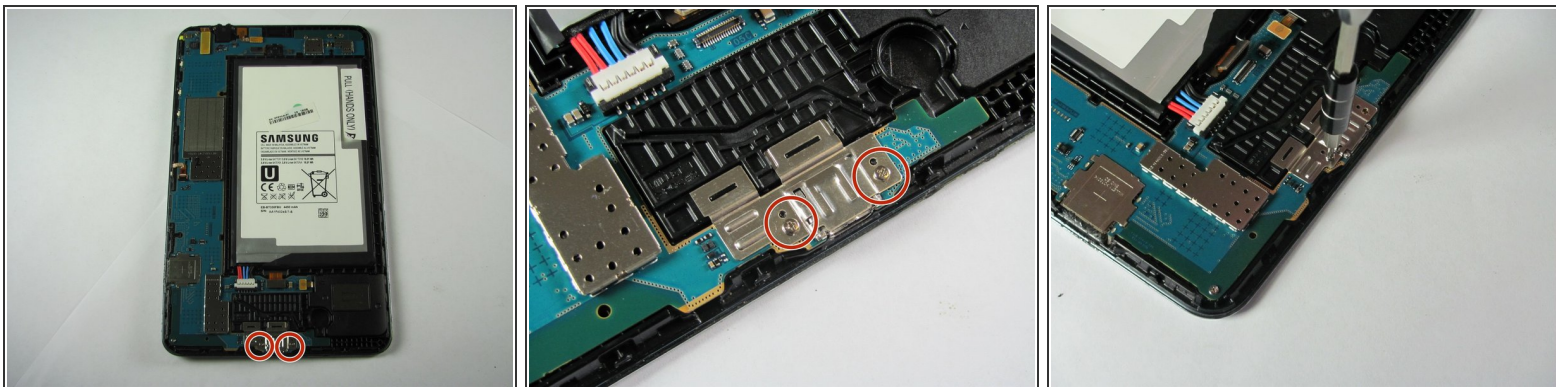
 Device has been rotated 180 degrees.

Step 11



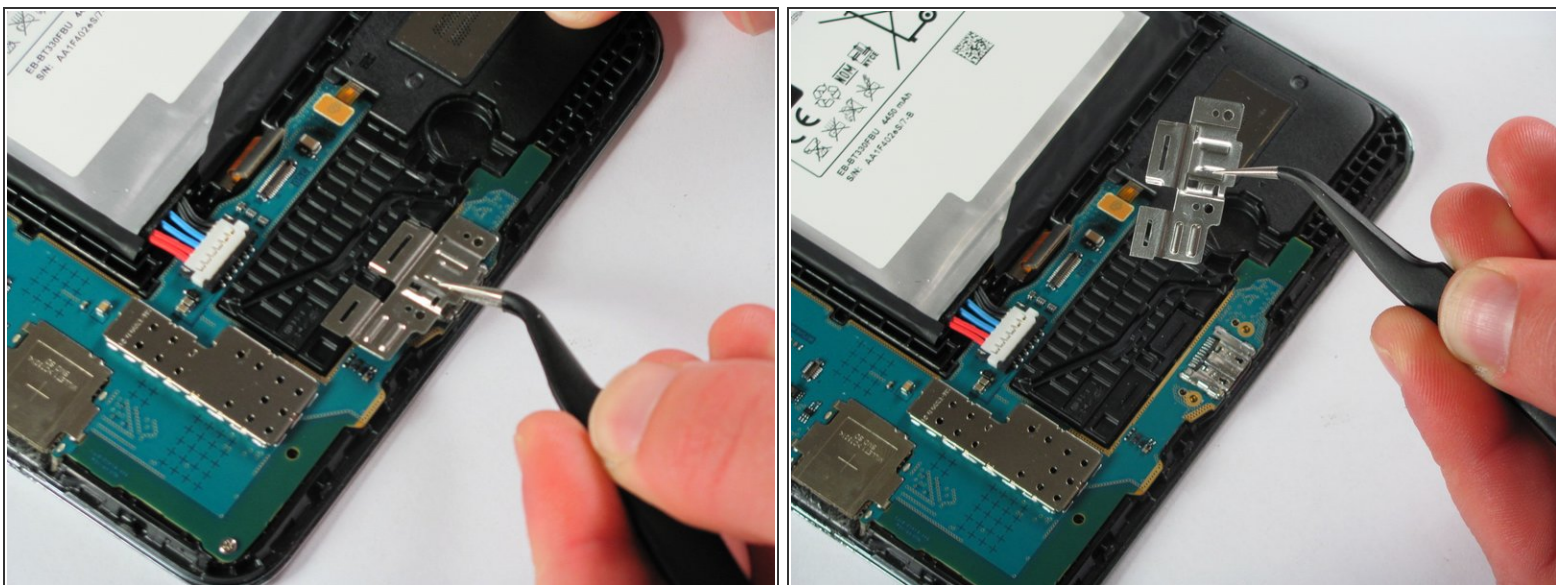
- Slide the opening tool underneath the connector and apply slight pressure outwards until the small bronze connector pops from its socket on the motherboard.
- Device has been rotated 90 degrees counter-clockwise.

Step 12



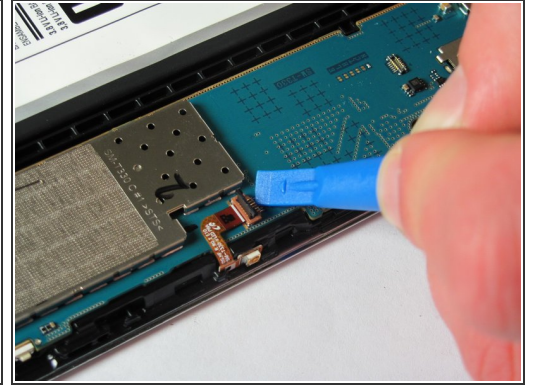
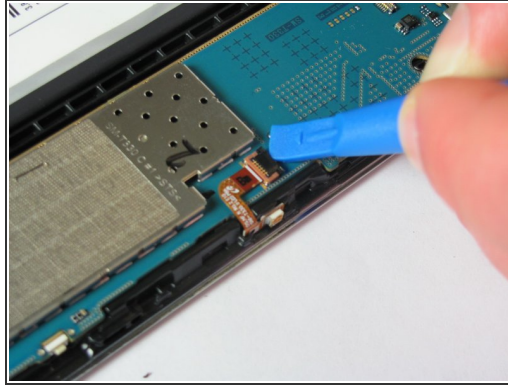
- Remove both 2 mm #000 Phillips screws from the metal charger port cover.

Step 13



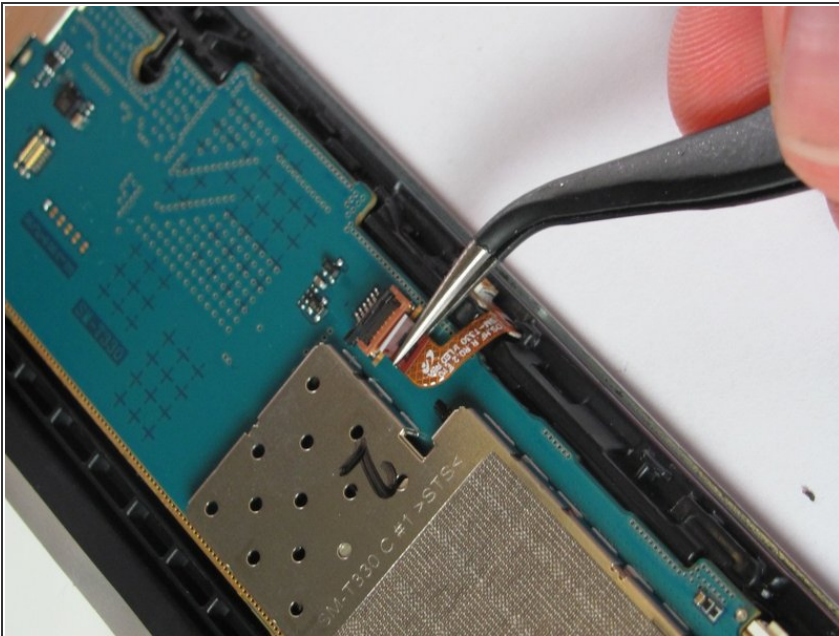
- Carefully lift the metal cover away with your tweezers.

Step 14



- Slide the flat end of the opening tool under the black plastic fastener and apply slight pressure outwards until it lifts away.
- ⓘ Device has been rotated 90 degrees counter-clockwise.

Step 15



- Use your tweezers to pull the golden cable out from underneath the black fastener.
- ⓘ The cable is fragile, so be careful when removing it.
- ⓘ Device has been rotated 90 degrees clockwise.

Step 16



- Remove all three 2 mm #000 Phillips screws that fasten the mother board to the front panel.

Step 17



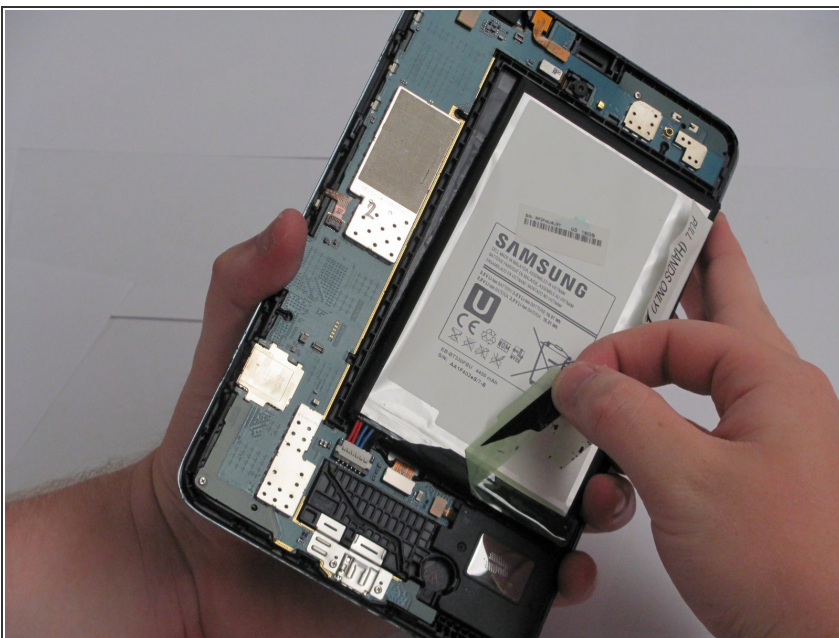
- Peel the sticker, reading "PULL (HANDS ONLY)," off of the battery starting at the detachable corner.

Step 18



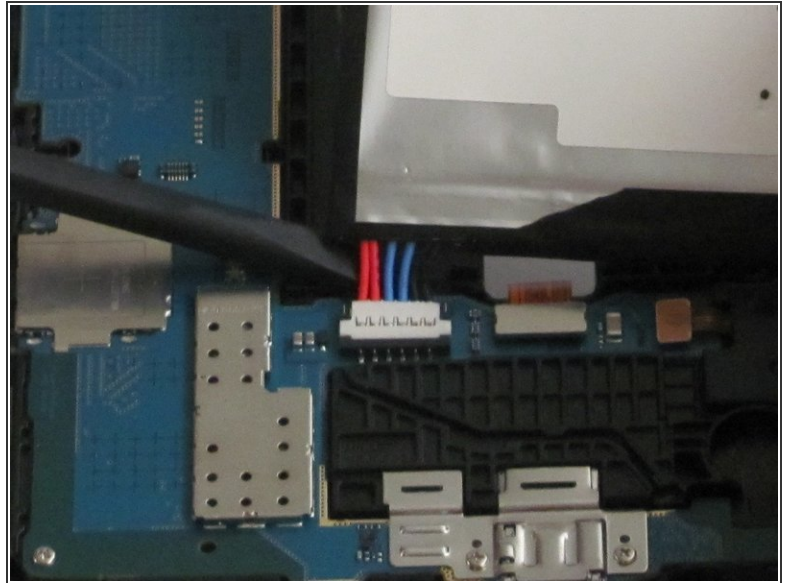
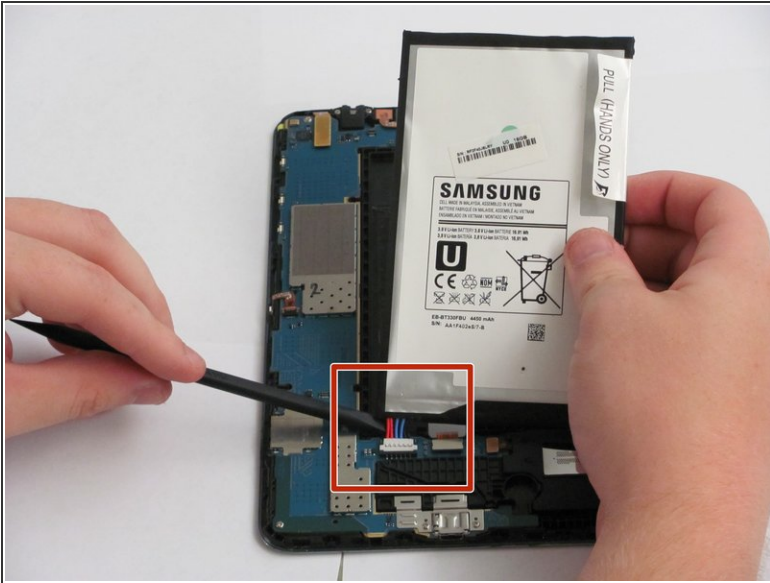
- Grab the top right corner of the battery and pull it out of the device.
- ⓘ If there is adhesive keeping the battery in place, use the flat end of the spudger and run it between the battery and the front panel.
- ⚠ Do not completely remove the battery as doing so could cause damage to the motherboard and the cables attached to the battery.

Step 19



- Peel away the green tape starting at the bottom left side.

Step 20



- Use the spudger to disconnect the battery connector by running it along the underside of the battery.
- Lift the battery out of the assembly.

Step 21



- Simply grasp the motherboard with both hands from the top and bottom on opposite corners and lift it free of the device.
- ⓘ Be sure to place the motherboard on a static-free surface like paper towels so as to prevent any further damage.

Replace the defective motherboard with the new one, then, to reassemble your device, follow the instructions in reverse order.