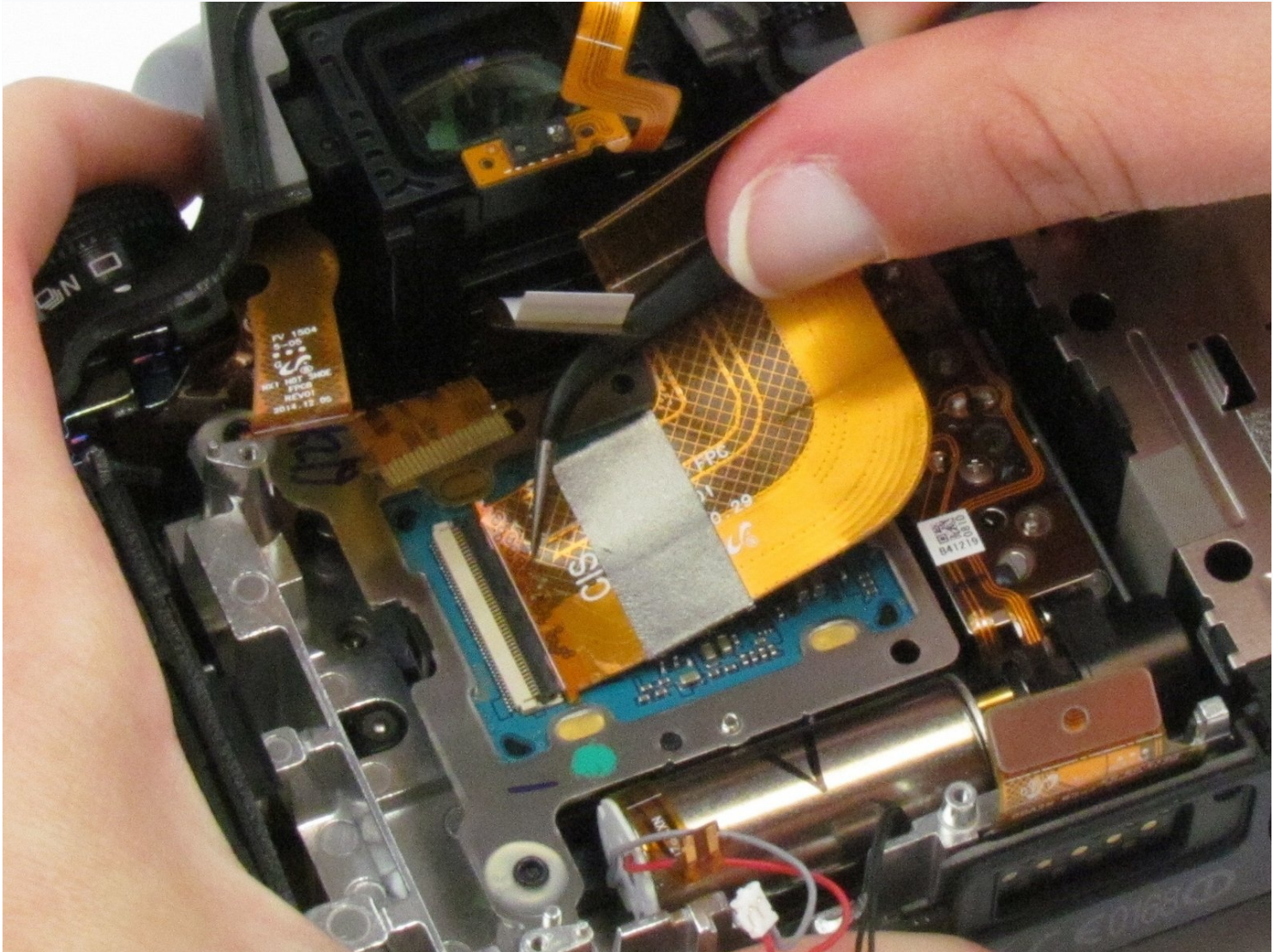




Samsung NX1 Viewfinder Replacement

Replace the viewfinder located at the top of...

Written By: Hannah Patrick



INTRODUCTION

Replace the viewfinder located at the top of the camera.

TOOLS:

Phillips #00 Screwdriver (1)

Tweezers (1)

Spudger (1)

Step 1 — Viewfinder Focus Dial



- Push the rubber viewfinder grip upward.

Step 2



- Use the Phillips #00 screwdriver to remove one 6.4 mm screw in the center of the dial.
- Remove the dial by lifting upward with your fingers.

Step 3 — Back Cover



- Use the Phillips #00 screwdriver to remove the four 5.5 mm screws surrounding the viewfinder.
- Use your fingers to lift the plastic viewfinder cover upward.

Step 4



- Use the Phillips #00 screwdriver to remove the two 5.5 mm screws from the right side of the camera above the SD card port.

Step 5



- Use the Phillips #00 screwdriver to remove one 5.5 mm screw on the left, above the HDMI port.

Step 6



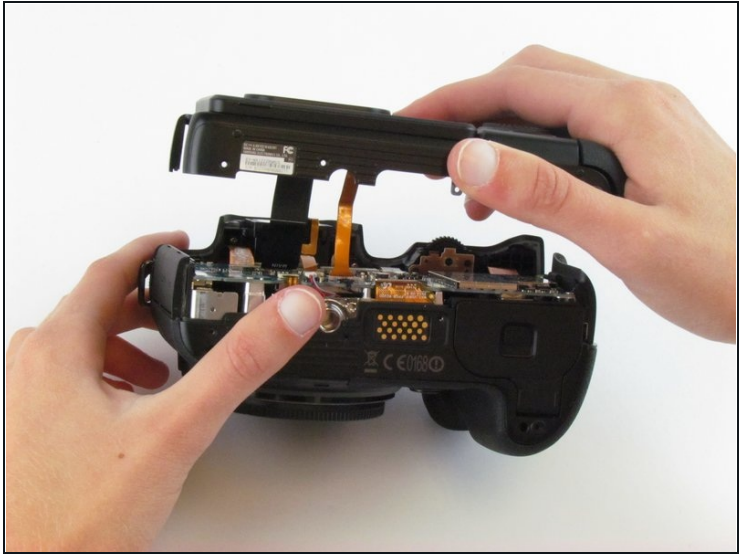
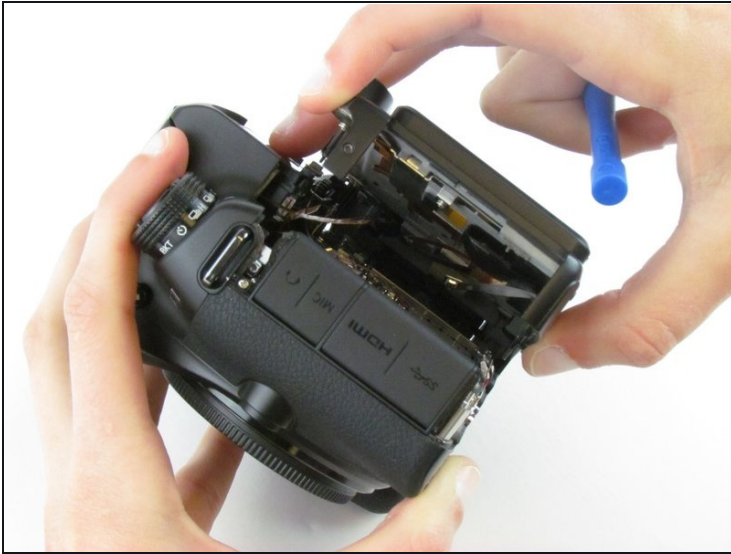
- Use the Phillips #00 screwdriver to remove the five 5.5 mm screws from the bottom, near the battery compartment.
- Use the Phillips #00 screwdriver to remove one 3.8 mm screw from the bottom of the hand grip, below the battery compartment.

Step 7



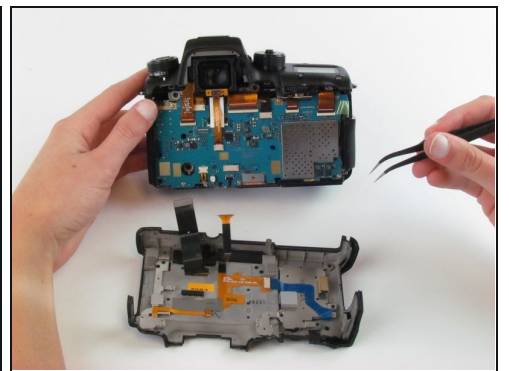
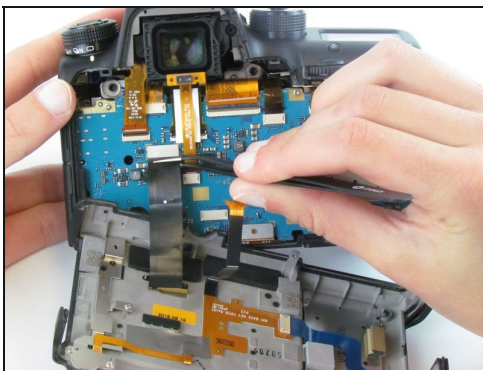
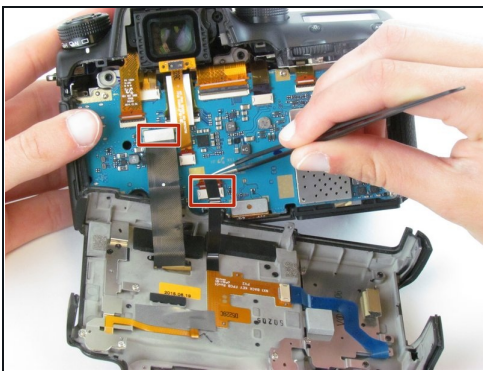
- Use a plastic opening tool to separate the back cover from the front cover.
- ① Pry the back cover in this order: bottom, right side, left side.

Step 8



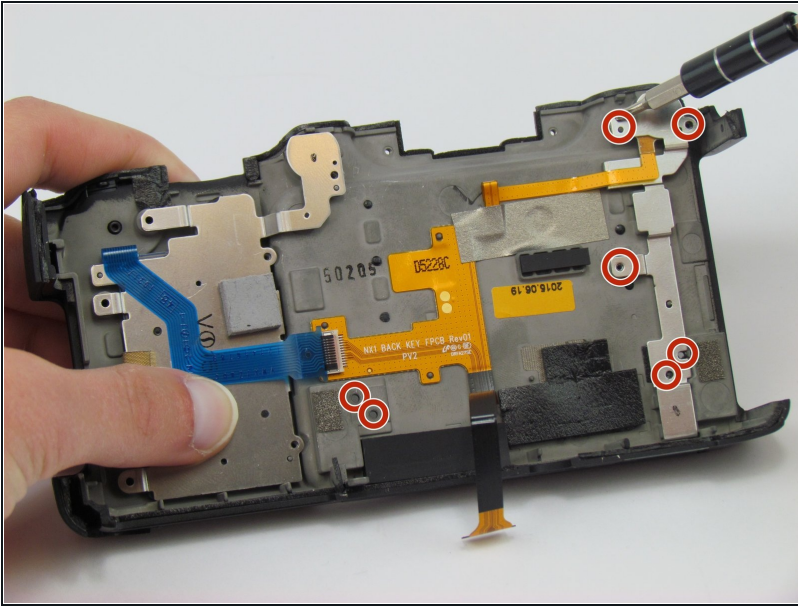
- Use your fingers to pull the back cover away from the front cover.
- ⓘ Do not completely separate the back cover from the front cover as two cables hold these components together.

Step 9



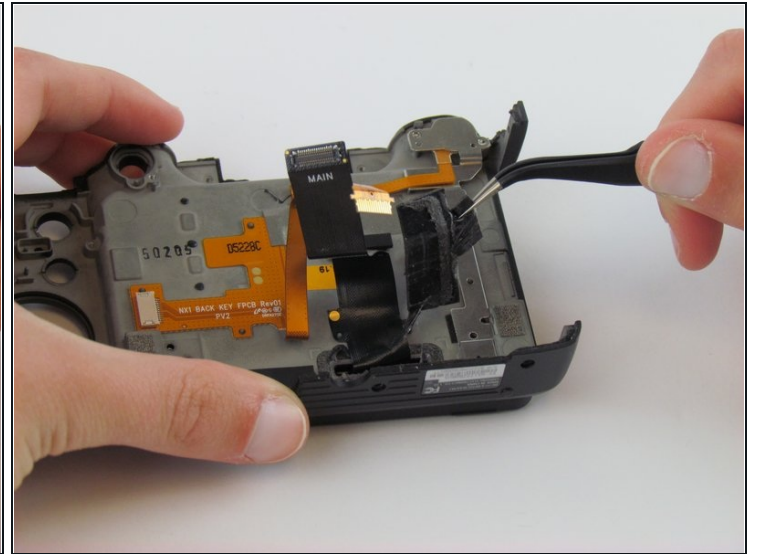
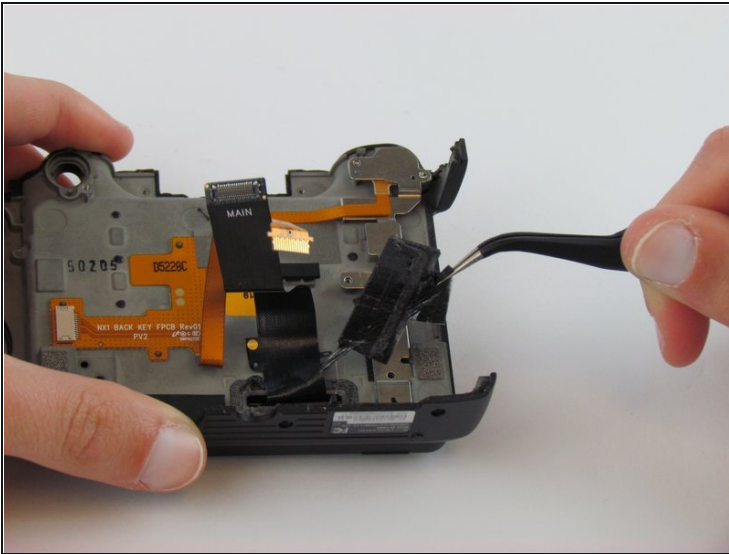
- Use [tweezers](#) to pull the two ribbon cables horizontally out of their clips.

Step 10 — LCD Touch Screen



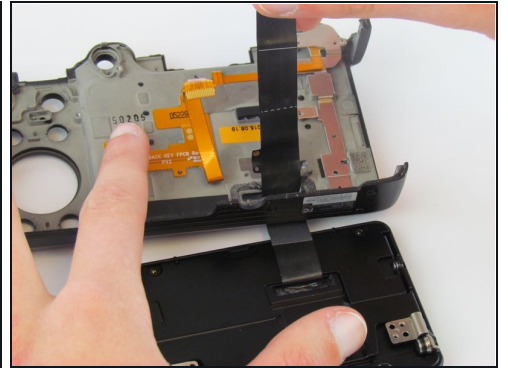
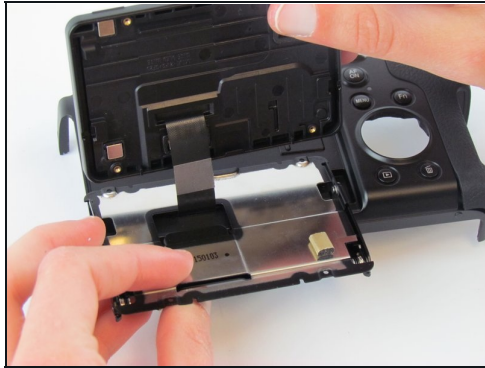
- Use the Phillips #00 screwdriver to remove the seven screws (three silver 3.5 mm screws and four black 2.7 mm screws).

Step 11



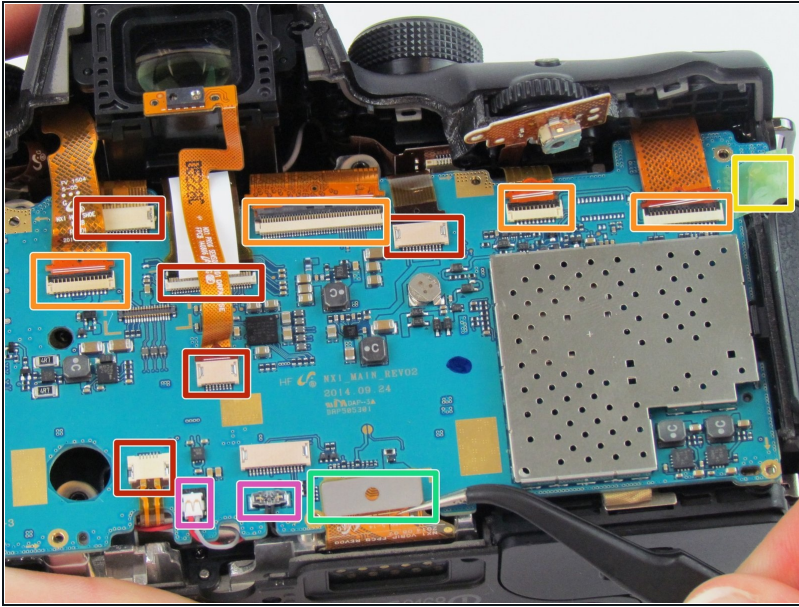
- Use [tweezers](#) to remove the glued rubber piece.

Step 12



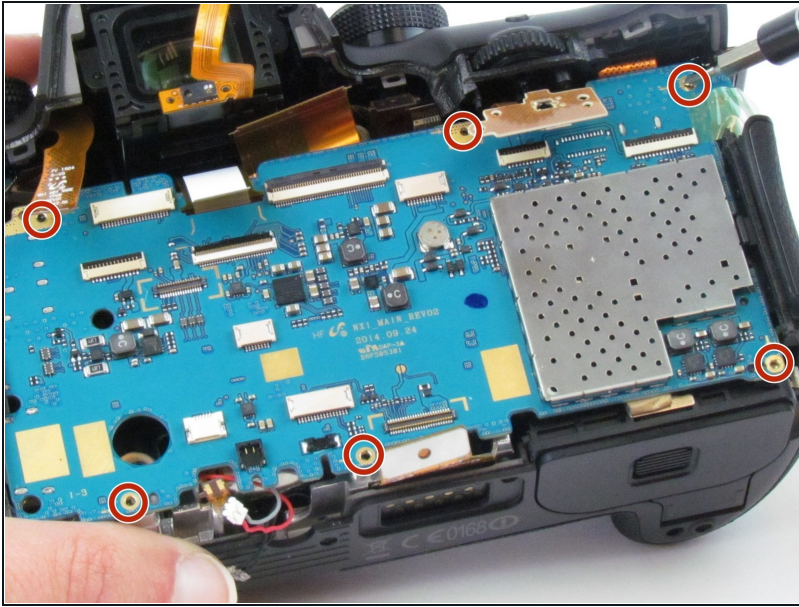
- Use the Phillips #00 screwdriver to remove the four black 2.3 mm screws.
- Use your fingers to separate the LCD screen from the folding mechanism.

Step 13 — Motherboard



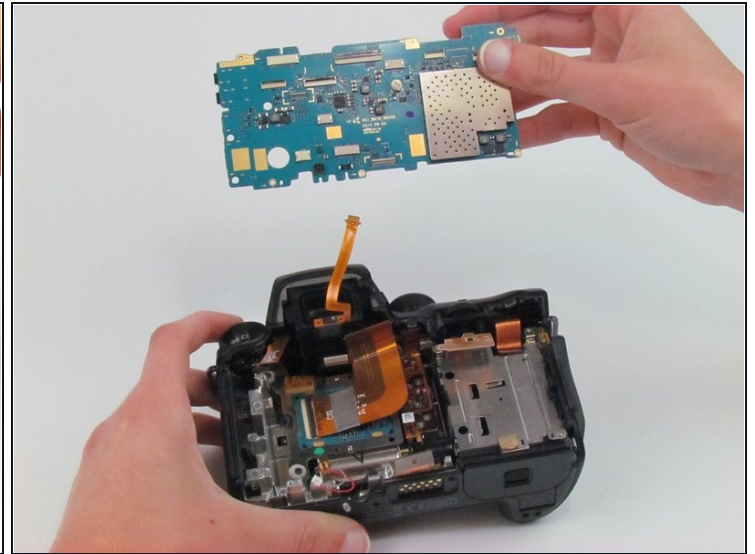
- Use [tweezers](#) to pull the five ribbon cables horizontally out of their clips.
- Use a spudger or your fingernail to flip up the four, small retaining flap, or zero insertion force (ZIF) connectors. Then, pull the ribbon cable out to disconnect it.
- Remove the green tape using your fingernail. Then, use a spudger to pry the one antenna cable connector straight up from the board.
- Use tweezers or a spudger to pry up each side of the flat-topped connector. Then, lift the one connector straight up from its socket.
- Use tweezers or your fingers to pull the two double-bundled cables up and away from the connector in the same direction that the individual wires are running.

Step 14



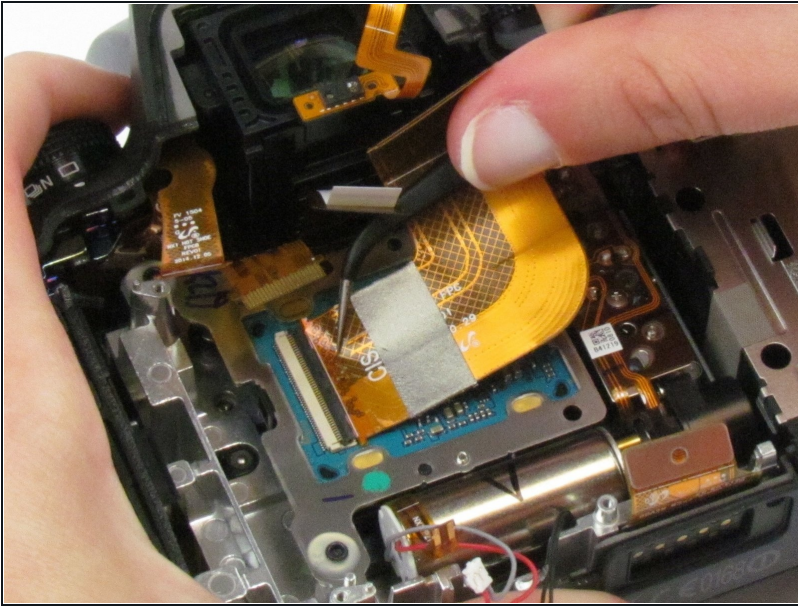
- Use the Phillips #00 screwdriver to remove the six silver 4.5 mm screws.

Step 15



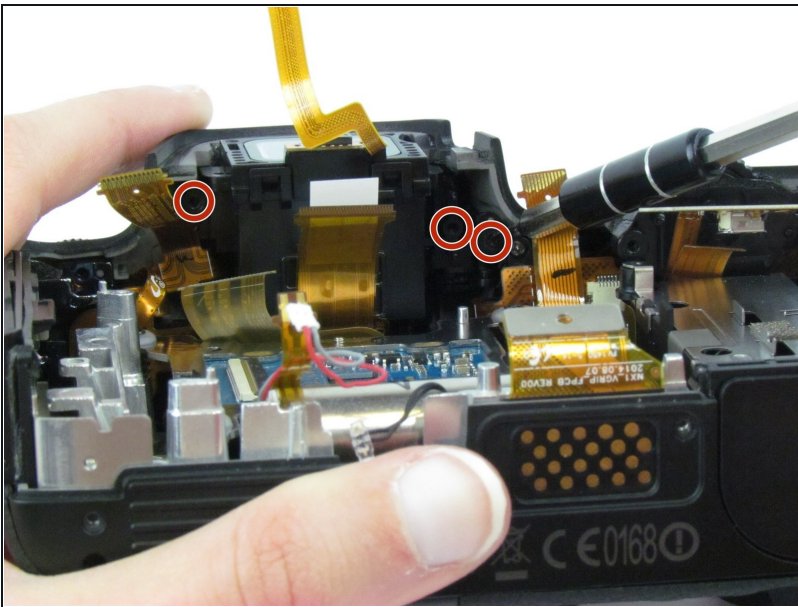
- Use a spudger to lift the motherboard up starting on the right side proceeding to the left side.
- Use your fingers to lift the motherboard completely out of the camera.

Step 16 — Viewfinder



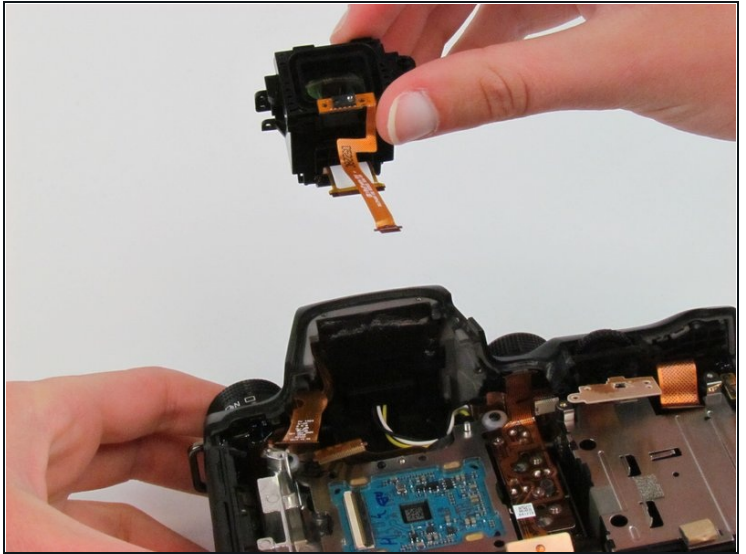
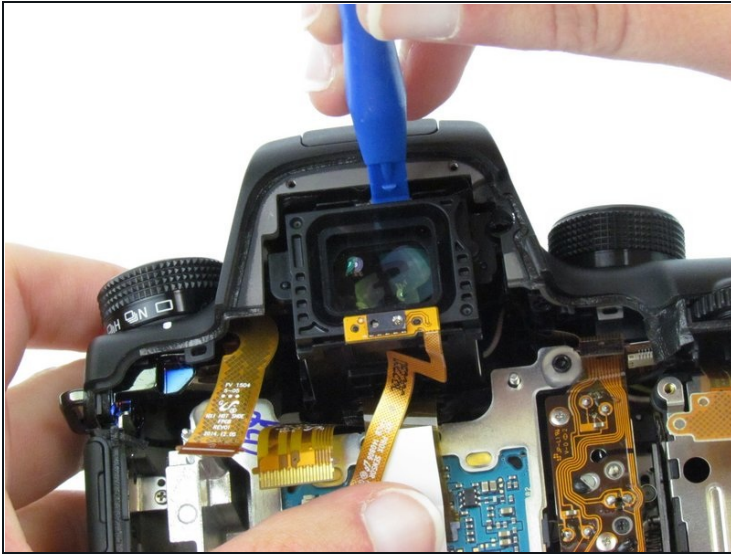
- Use [tweezers](#) to lift the black tab on the ZIF connector.
- Use tweezers to pull the large orange ribbon cable out of the connector to get a clearer view of the screws lying beneath it.

Step 17



- Use the Phillips #00 screwdriver to remove the three black 3.8 mm screws below the viewfinder.

Step 18



- Use a spudger to gently push the viewfinder cube, starting at the top of the cube and pushing it toward the bottom of the camera.
- Use your fingers to lift the viewfinder cube out of the camera.

To reassemble your device, follow these instructions in reverse order.