



Shark Vacuum Pet Hair Power Brush Roller Replacement

Many vacuum cleaners have a separate pet hair...

Written By: Roshni Sachar



INTRODUCTION

Many vacuum cleaners have a separate pet hair and power brush head. The roller brush of the head can easily break due to wear and tear. Use this guide to replace the internal roller brush in the power brush head of your Shark vacuum cleaner.



PARTS:

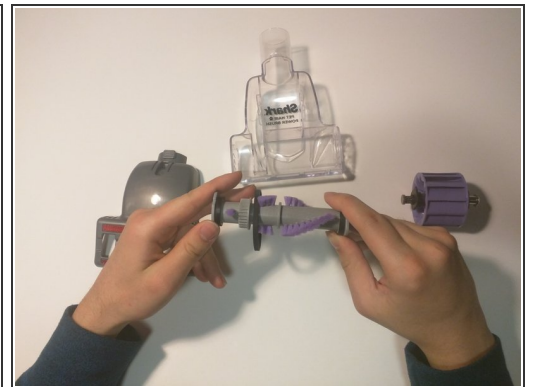
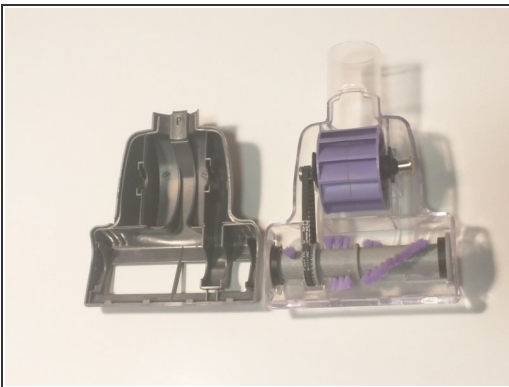
- [Shark Vacuum Pet Hair Power Brush Roller](#) (1)
-

Step 1 — About the unit



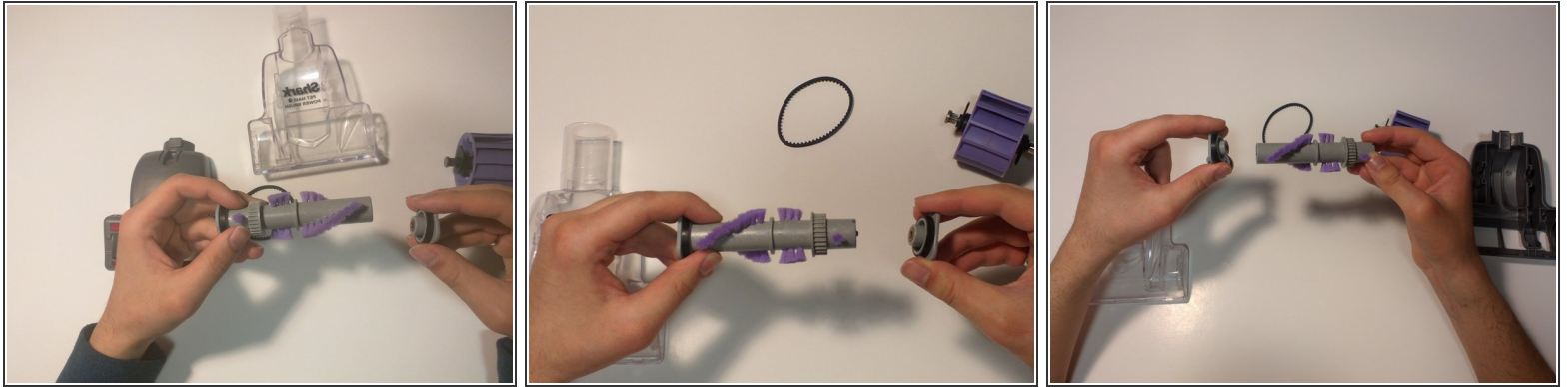
- This Shark model brush head consists of 7 parts: a base frame, a gear, a roller brush, two side screws, a plastic round band, and a top frame of the head.
- Push the grey button on the back panel to open up the brush head.

Step 2 — Disassembly



- Take the purple gear, belt, and brush out of the body.
- ⓘ Save the belt as this is needed to make the unit operate.

Step 3 — Replacing the brush



- Pull out the side screws from the right and left side of the old roller brush and put them on the replacement roller brush.

To reassemble your device, follow these instructions in reverse order.