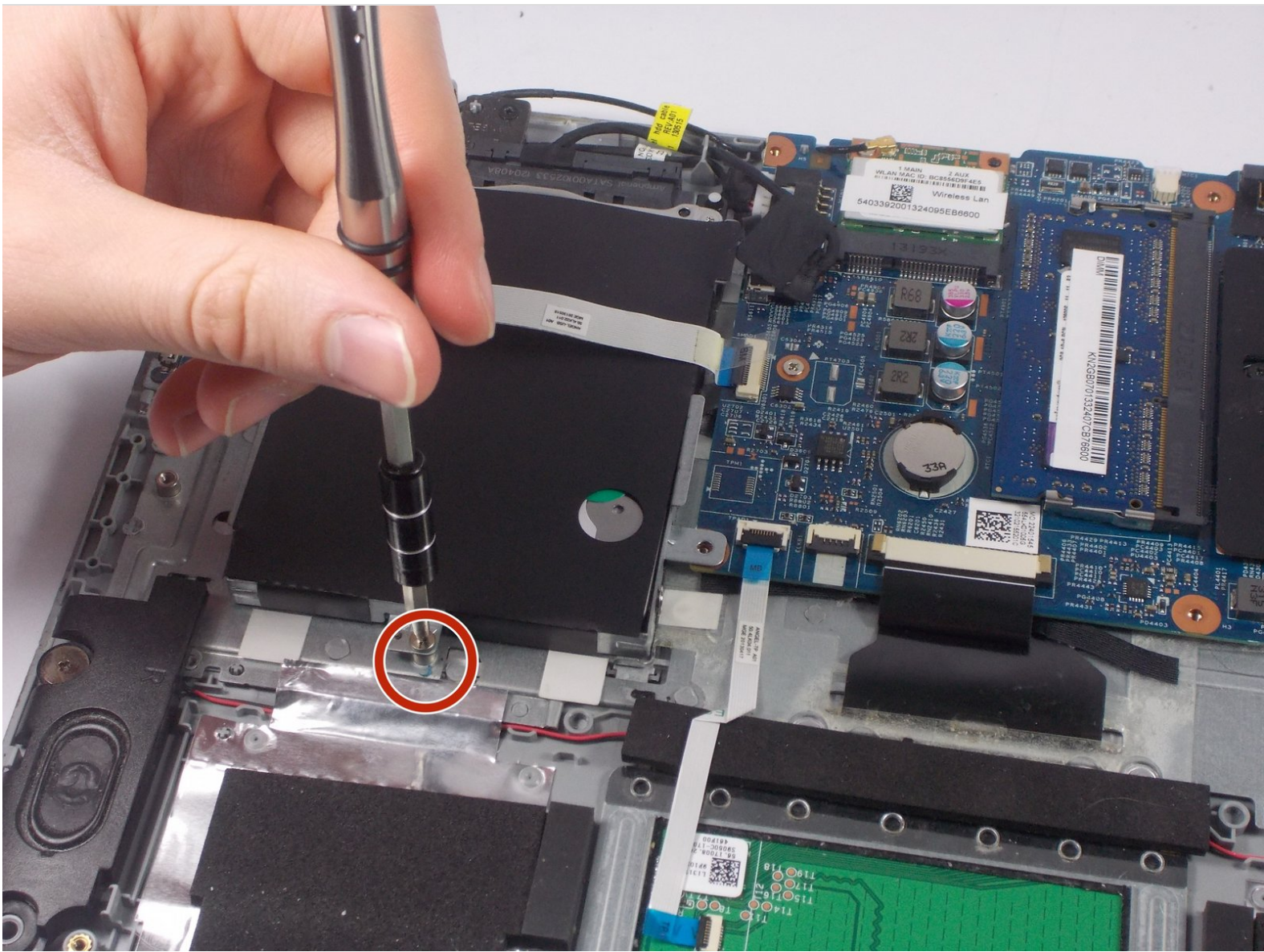




Acer Aspire V5-122P-0889 Hard drive Replacement

This guide will walk you through step by step on how to properly locate and remove the computers hard drive. The picture for this guide will allow you to locate the components that need to be removed in order to remove the hard drive (screws, ribbon,etc,

Written By: Katelynn couto



INTRODUCTION

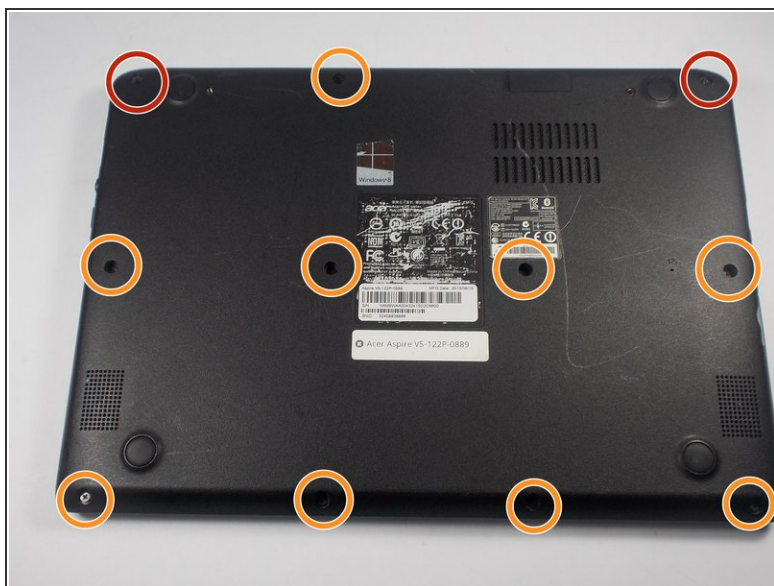
Wondering what is going on with your hard drive? Are you confused on how to change your laptops hard drive? This guide is here to teach you exactly how to carefully replace your hard drive.



TOOLS:

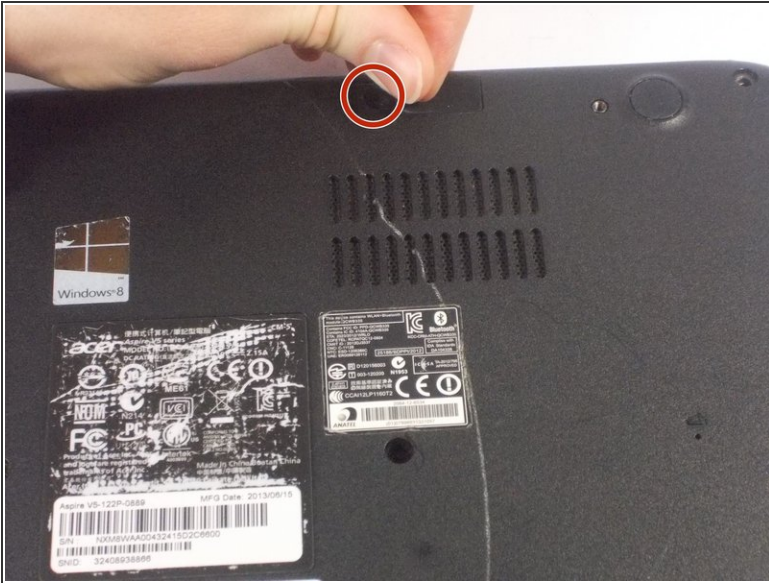
- [Spudger](#) (1)
 - [Phillips #0 Screwdriver](#) (1)
-

Step 1 — Battery



- Start the process of removing the bottom cover of the laptop by unscrewing the 8mm screws in the top right and left corners.
- Remove the remaining 9 visible screws, which are 5mm in length.
- ⓘ Every screw in this laptop can be removed with a Phillips #0 screwdriver.

Step 2



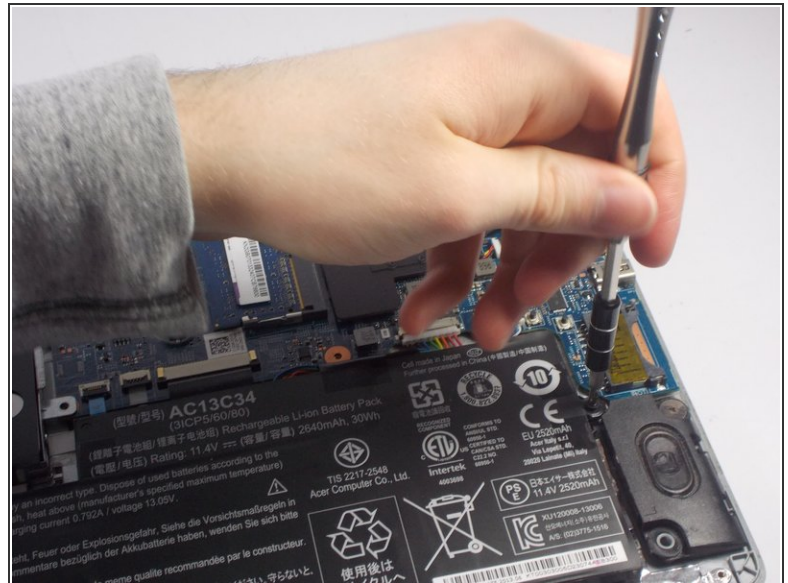
- Towards the top right corner of the laptop, there is a rubber piece covering the final screw holding the cover on, as well as a set of pins. Use your fingernail to remove this piece of rubber, and then unscrew the hidden 5mm screw.

Step 3



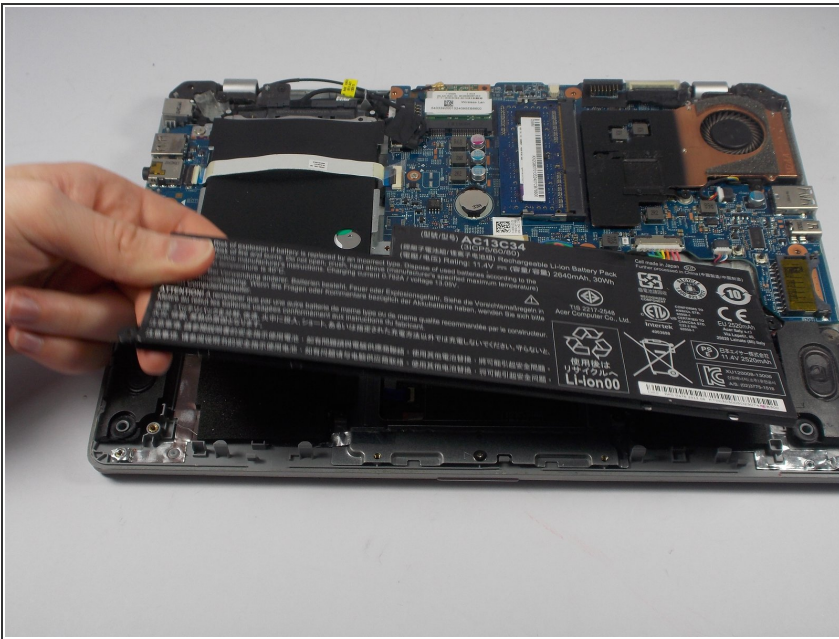
- Going around the edges of the laptop, apply light to moderate amounts of pressure away from the laptop to unseat the cover so that it can be removed. Once you have removed the cover, place it face-up in a safe place to avoid getting the inside of the cover dirty.
- ⓘ If you are having trouble unseating the cover by hand, a nylon spudger can be run around the perimeter of the laptop to help lift the cover away from the case.

Step 4



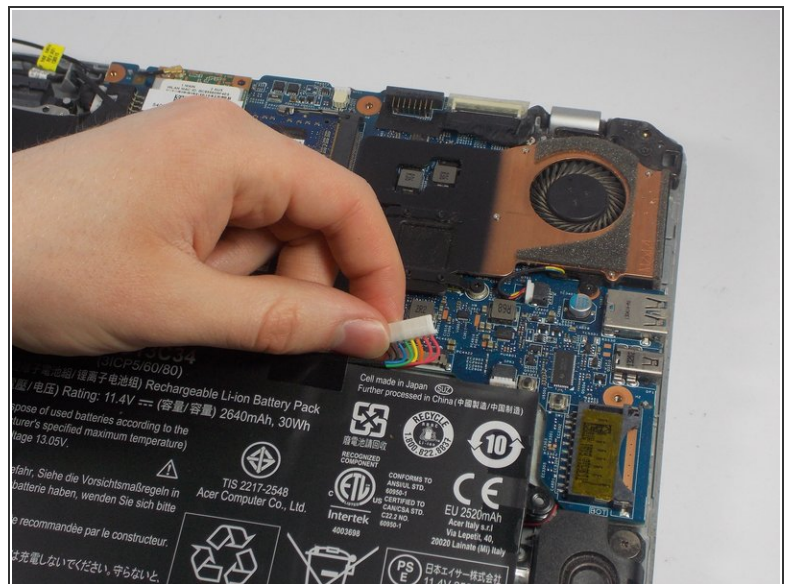
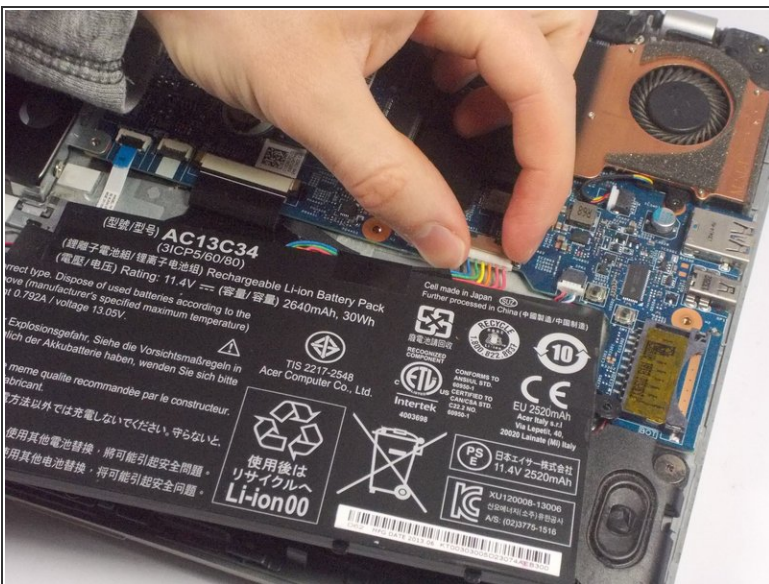
- Carefully unscrew the two 5mm screws holding the battery in place.

Step 5



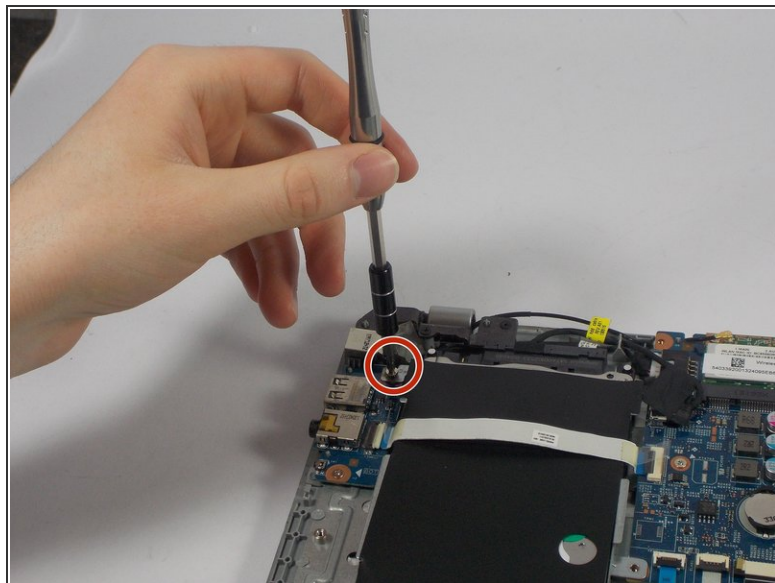
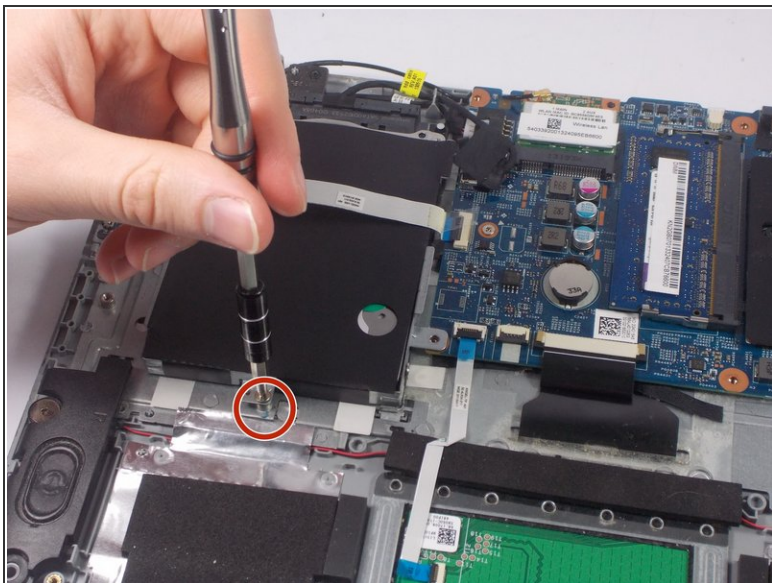
- Carefully use light upward pressure to unseat the battery from the case, but do not pull on the cord or try and completely remove the battery from the case.

Step 6



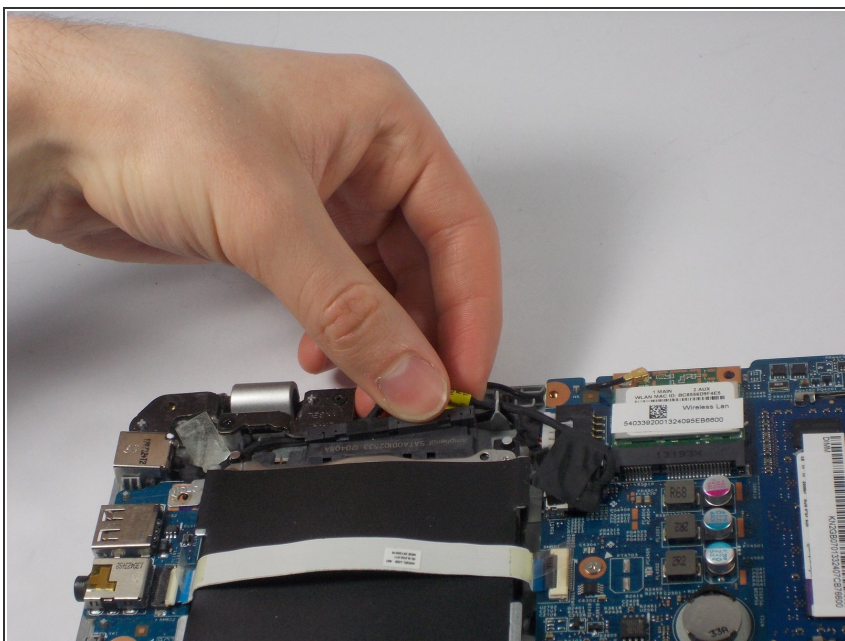
- Finally, disconnect the battery from the motherboard by undoing the power connector. To undo the connector, simply apply light to moderate pull on the sides of the connector.

Step 7 — Hard drive



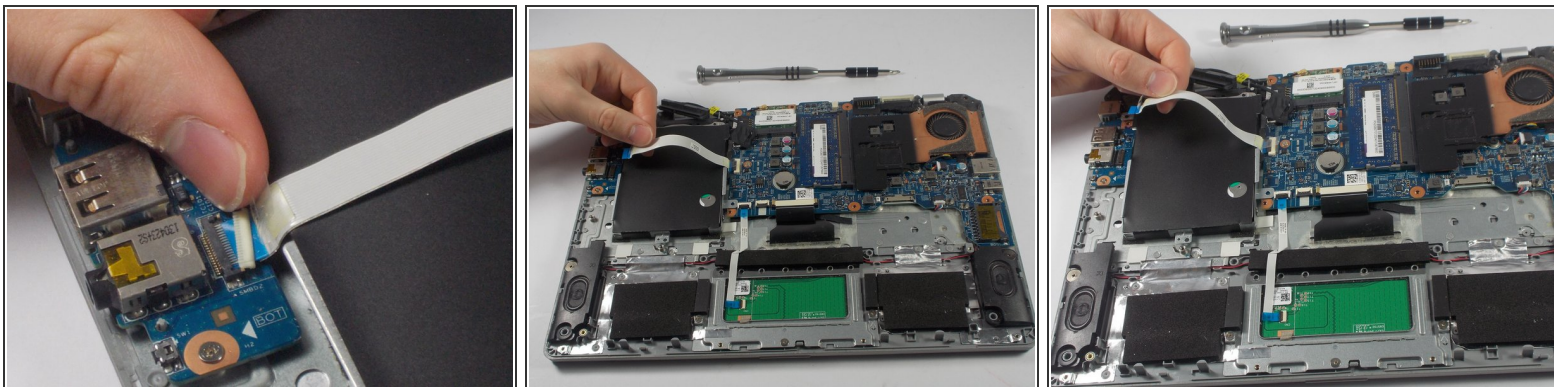
- Remove the the two screws that hold the hard drive tray in place.

Step 8



- Remove the SATA cable that is attached to the top of the hard drive.

Step 9



- Use your fingernail to remove the plastic white piece that holds the ribbon cable in place. You can remove the cable from either side of the hard drive, but the left side is recommended.
- After removing the plastic piece that holds the cable in place, you can lift the ribbon cable up high enough to remove the hard drive.

Step 10



- Remove the hard drive and tray from the laptop.

To reassemble your device, follow these instructions in reverse order.