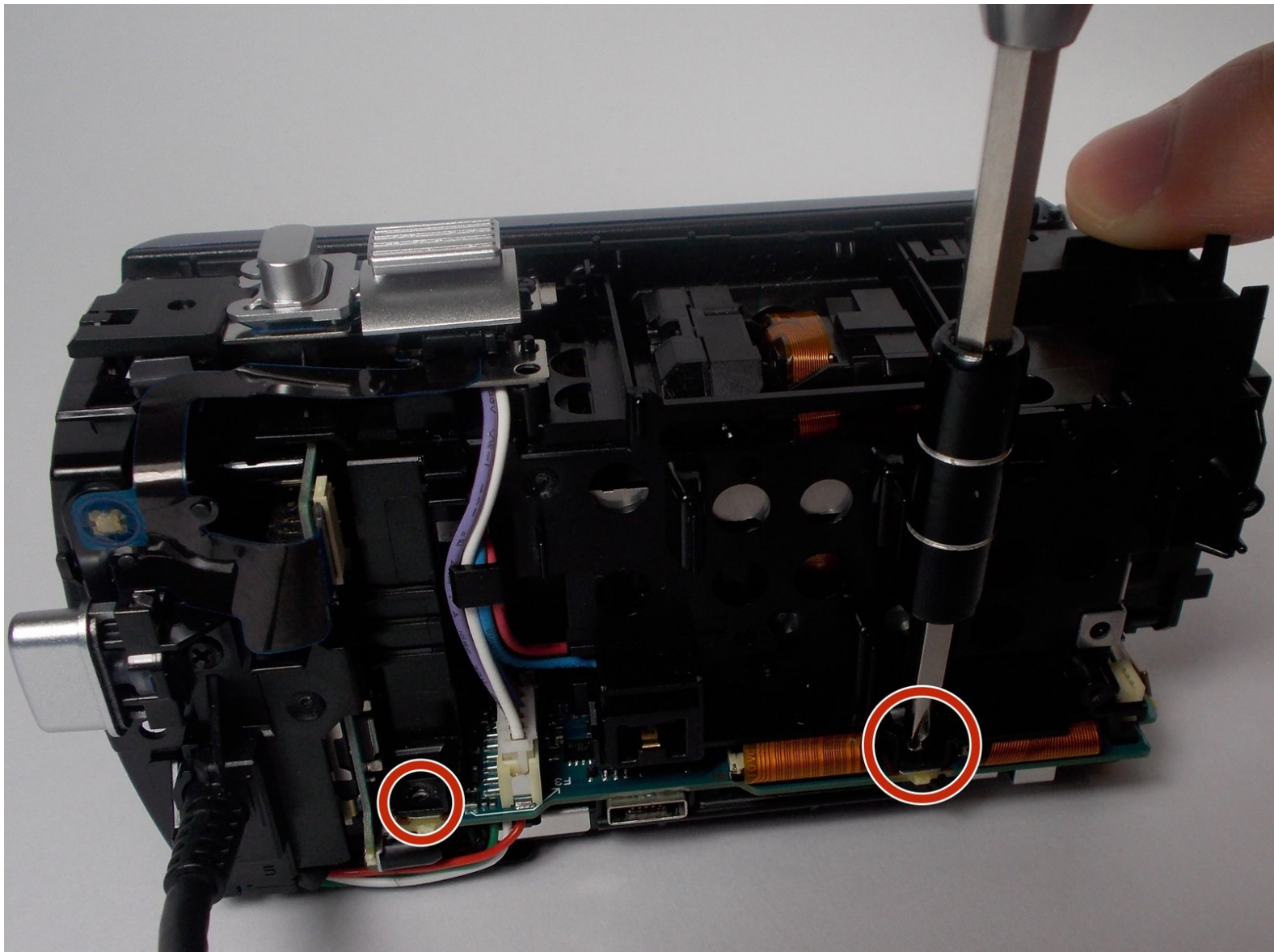




Sony Handycam HDR-CX220 Motherboard Replacement

Replace the entire motherboard on your camcorder.

Written By: Keven



INTRODUCTION

Use this guide to help you remove the broken or defected motherboard in your Sony Handycam HDR-Cx220.



TOOLS:

- [Phillips #0 Screwdriver](#) (1)
 - [iFixit Opening Tools](#) (1)
-

Step 1 — Battery



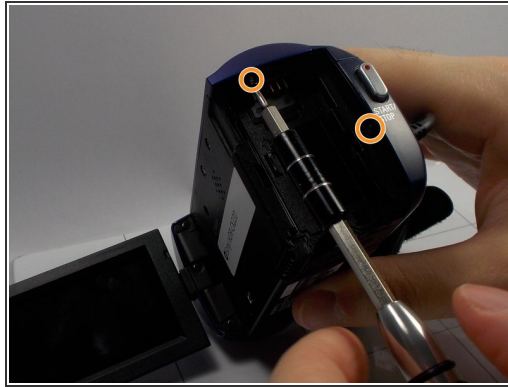
- Push in the battery indicator.

Step 2



- Slide the battery out of the slot.
- ★ To put the battery back in, line up the battery's metal part with the camera's and slide it in.

Step 3 — Camera's Body



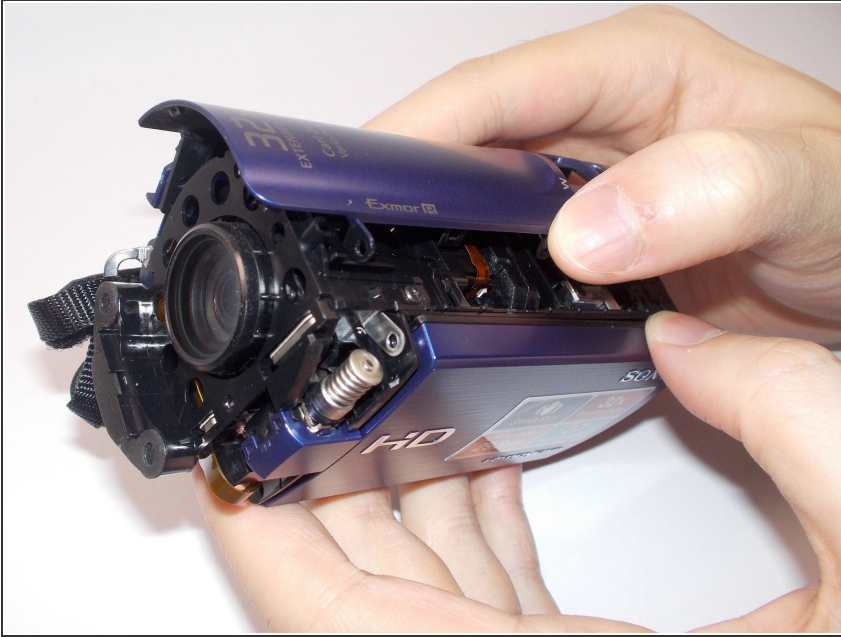
- Use the Phillips #0 screwdriver to remove the two 5mm screws.
- Use the Phillips #0 screwdriver to remove the two 5mm screws.
- Use the Phillips #0 screwdriver to remove the three 5mm screws.

Step 4



- Use the plastic opening tool to loosen the plastic case of the camcorder.

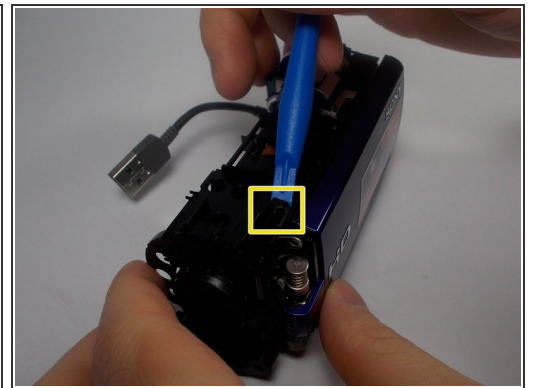
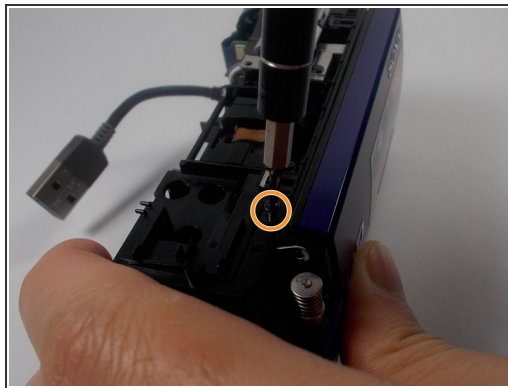
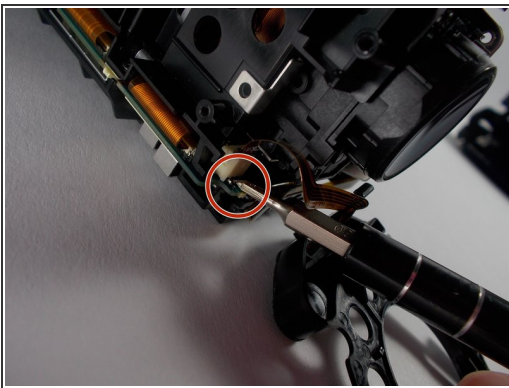
Step 5



- Use your hands to remove the plastic case.

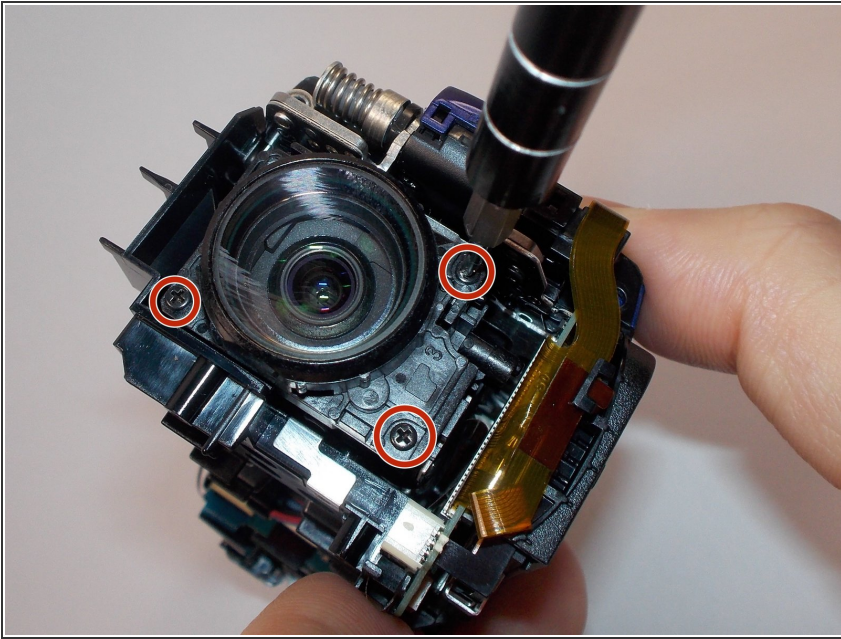
⚠ Gently pull on the case not to damage anything internally.

Step 6 — Lens



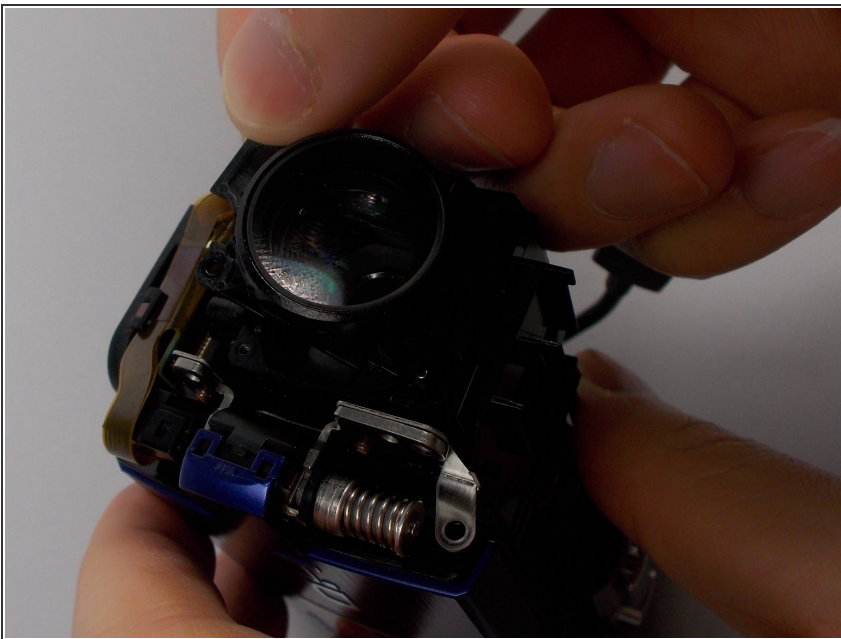
- Use the Phillips #0 Screwdriver to remove the 5mm screw
- Use the Phillips #0 Screwdriver to remove the 5mm screw
- Use the Plastic Opening tools to unhook the highlighted area.

Step 7



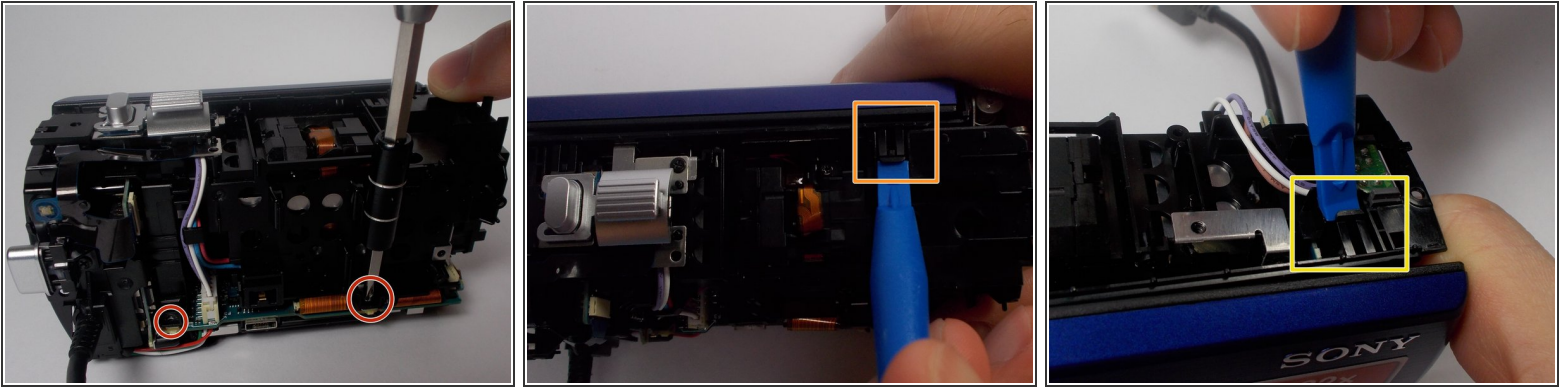
- Remove the 3 (4mm) screws on the front of the lens using the Philips #0 Screwdriver.

Step 8



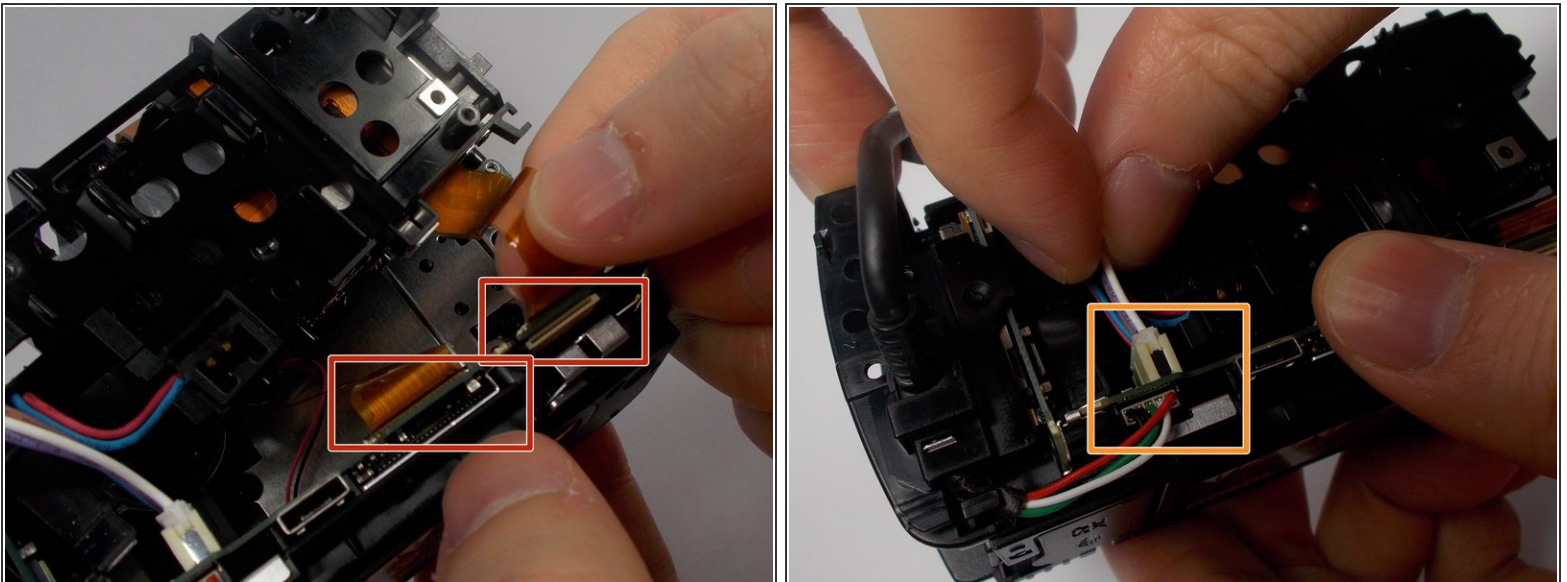
- Remove the lens and clean it if needed.

Step 9 — Motherboard



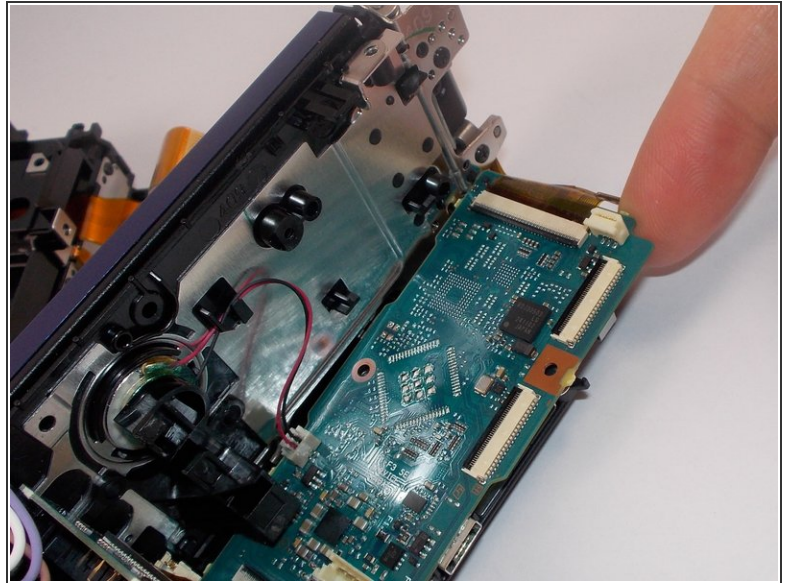
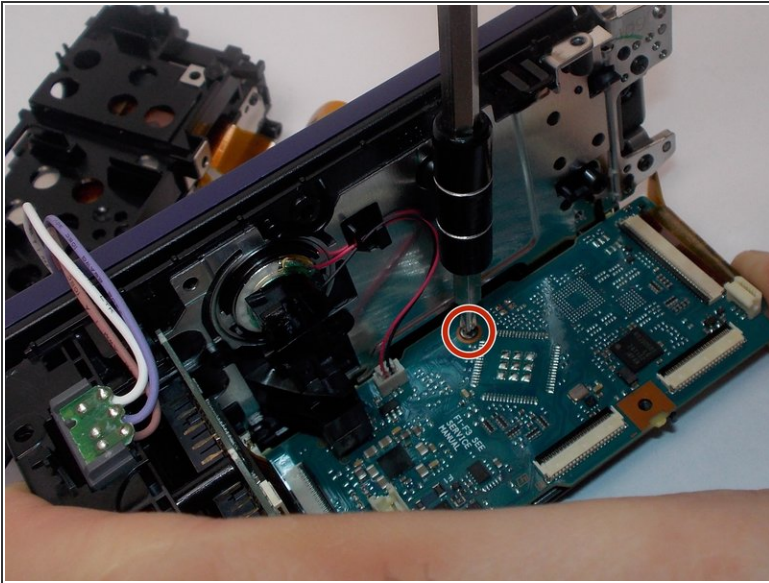
- Use the Phillips #0 Screwdriver to remove the shown 5mm screws.
- Use the plastic opening tool to release the front hook.
- Use the plastic opening tool to release the back hook.

Step 10



- Gently pull on the 2 wires shown on the bottom of the camcorder.
- Disconnect the wire shows on the second picture.

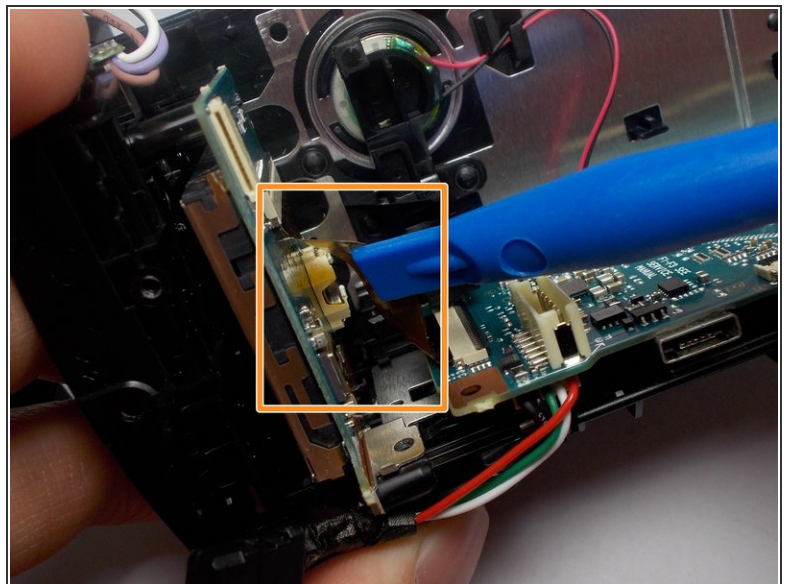
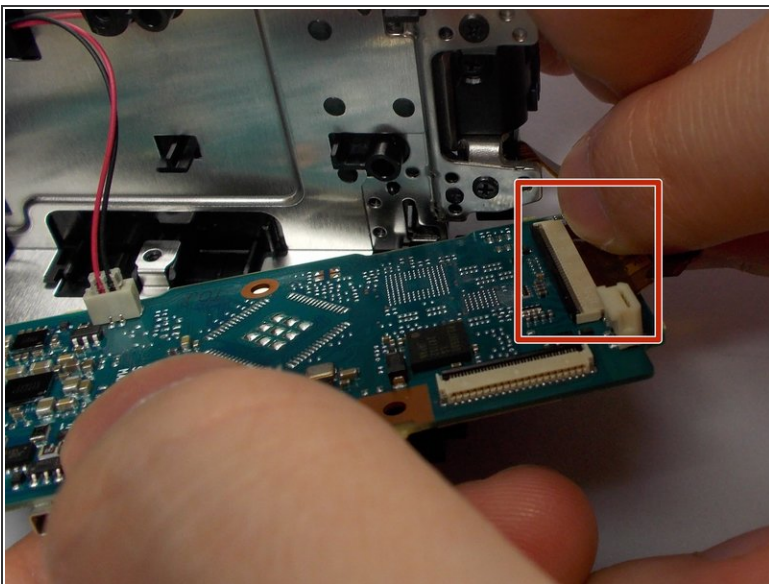
Step 11



- Use the Phillips #0 screwdriver to remove the 4mm screw shown.

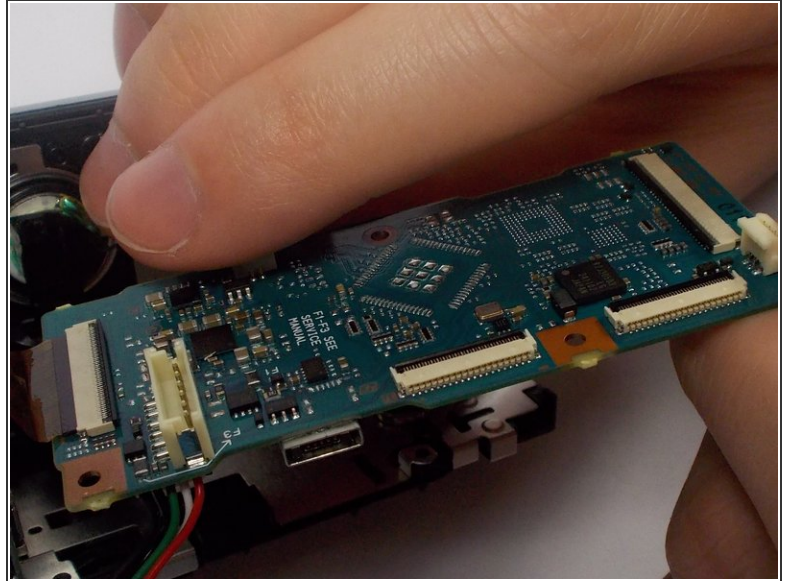
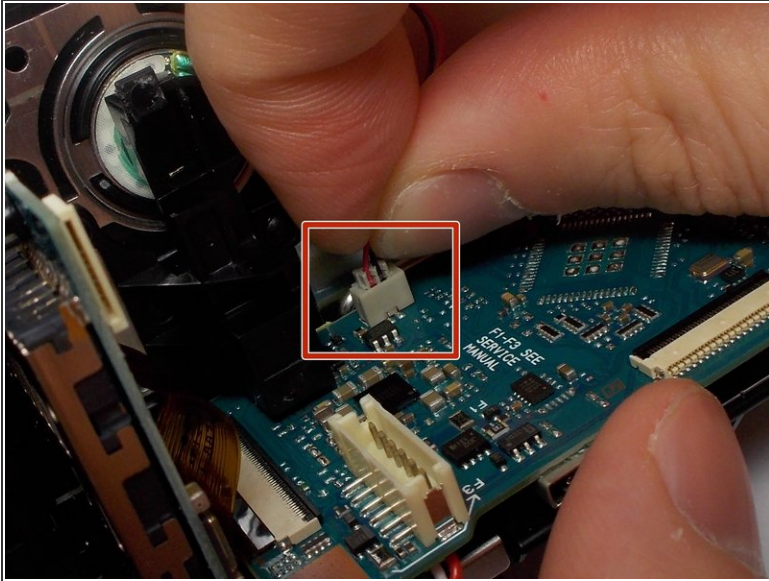
⚠ Gently remove the motherboard with your fingers.

Step 12



- Remove the side wire from the motherboard as shown on the photo.
- Remove the top wire from the motherboard as shown on the photo.

Step 13



- Unplug the speaker from the motherboard.

To reassemble your device, follow these instructions in reverse order.