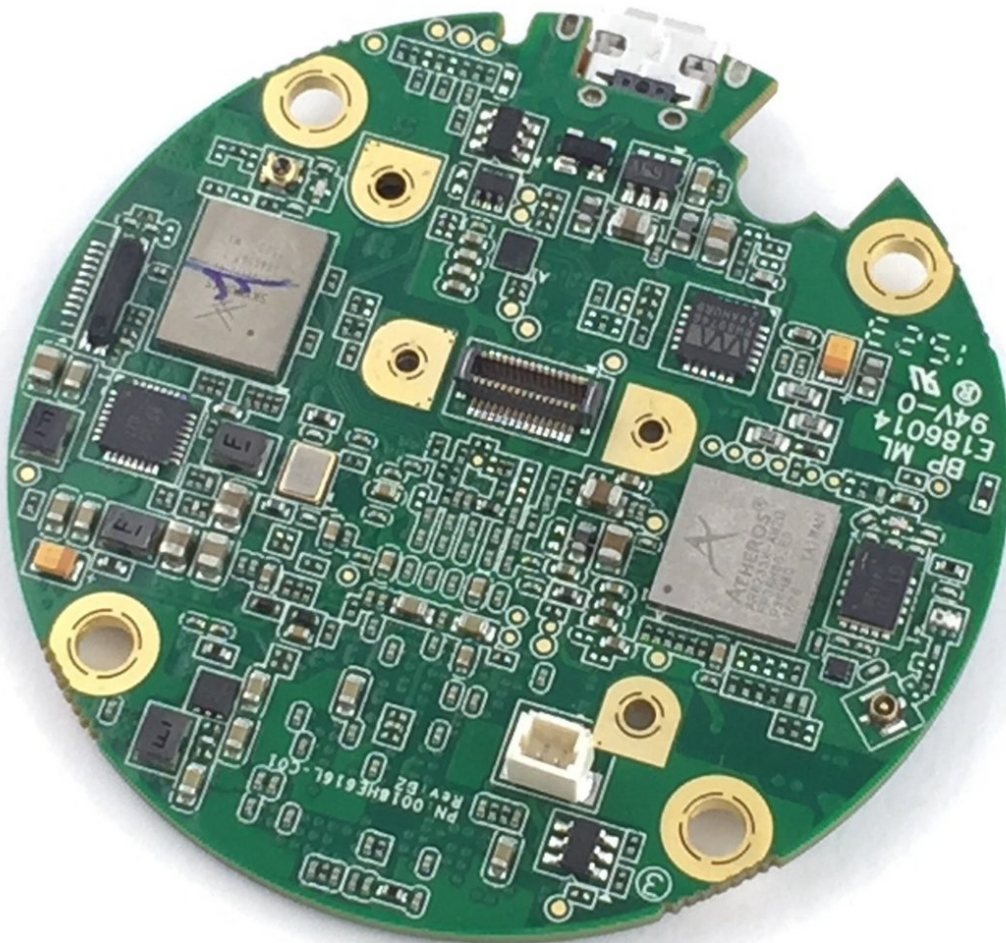




# Nest Cam Motherboard Replacement

A step by step guide on how to replace the motherboard for your Nest Cam.

Written By: Khiry Jones



## INTRODUCTION

The motherboard is responsible for all major functions. If major components of your Nest Cam's hardware are malfunctioning or won't function even after troubleshooting, the motherboard may need to be replaced.

---

### TOOLS:

- [Tweezers](#) (1)
  - [Spudger](#) (1)
  - [JIS #000 Screwdriver](#) (1)
-

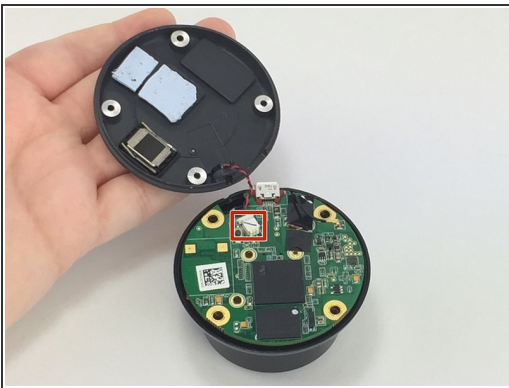
## Step 1 — Motherboard



- Remove the four 6 mm screws from the back panel with the JIS 000 screwdriver.

⚠ We suggest designated areas to keep track of all screws.

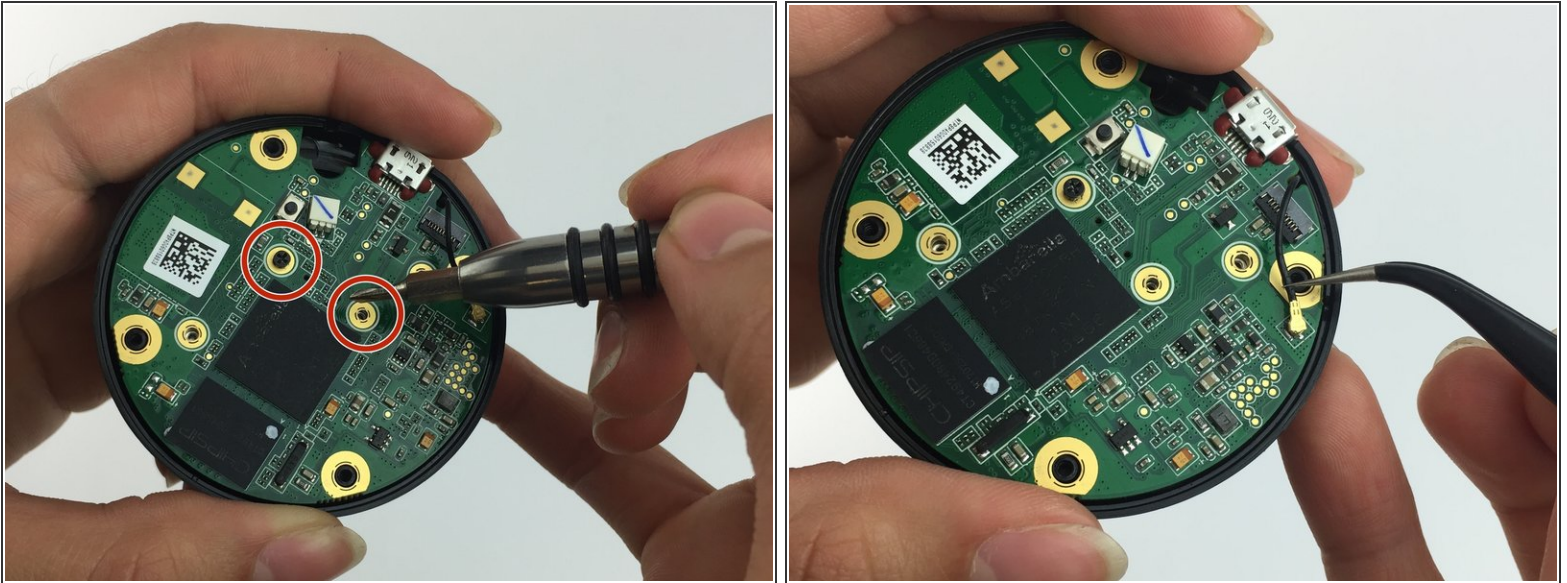
## Step 2



- Open the back panel completely to expose the inside of the Nest Cam.
- Using the tweezers, disconnect the red and black mic cable from the motherboard.

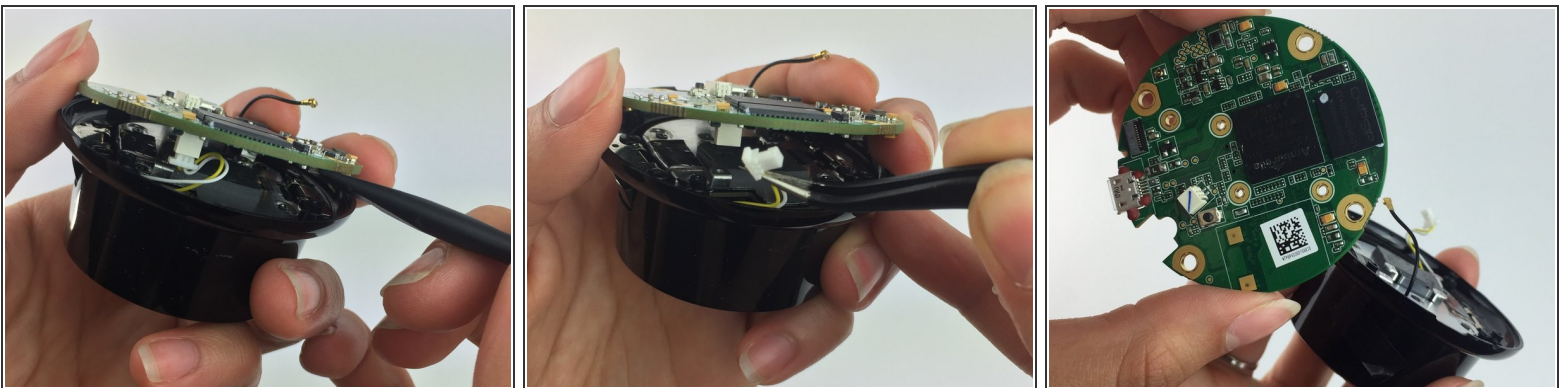


### Step 3



- Remove the two 4 mm screws with the JIS 000 screwdriver from the center.
- Disconnect the black Wi-Fi cable from the motherboard with the tweezers.

### Step 4



- Use a plastic spudger to lift the motherboard slightly up to expose and disconnect the white cable and the yellow/white IR cable with tweezers.
- Then use the spudger or a finger to lift the motherboard completely up and off.

⚠ When installing the new motherboard ensure that all wires are reconnected before securing.

To reassemble your device, follow these instructions in reverse order.