



Tatung TAC-6G Heating Element Replacement

This guide will instruct the user how to remove the heating element from their rice cooker and then replace it with a new, functioning one.

Written By: John David Mitchell



INTRODUCTION

The rice cooker contains a heating element responsible for heating and cooking the rice while it is turned on. In this guide we will show how to expose the heating element and replace it.




TOOLS:

- [64 Bit Driver Kit](#) (1)
-

Step 1 — Heating Element



- Lift the lid and bowl from top of the device

 Be sure device is not plugged in before beginning replacement of heating element

Step 2



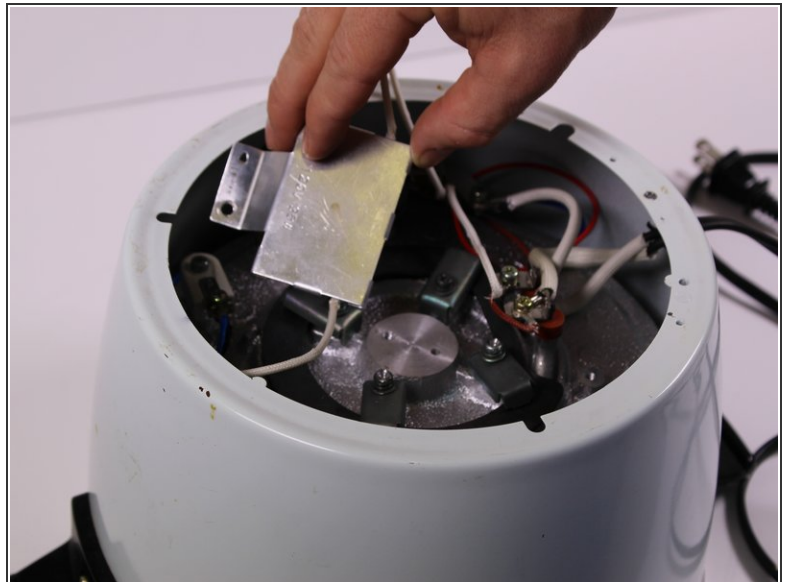
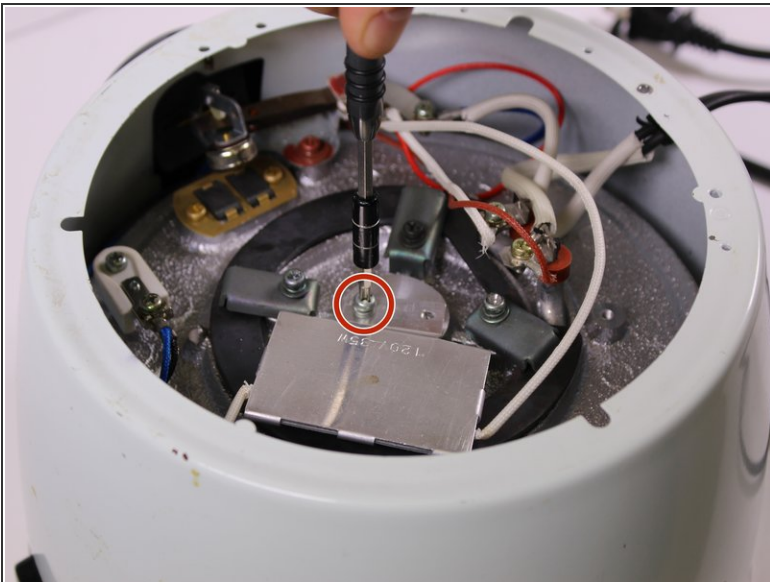
- Turn the bowl upside down so that the three legs point upwards

Step 3



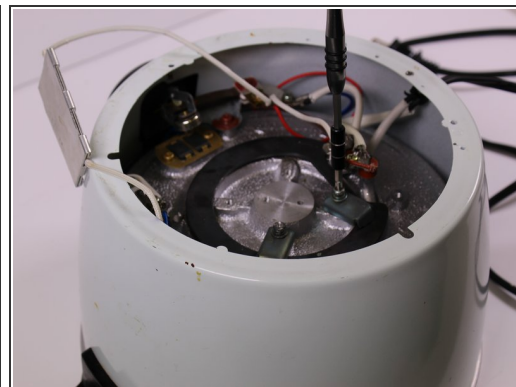
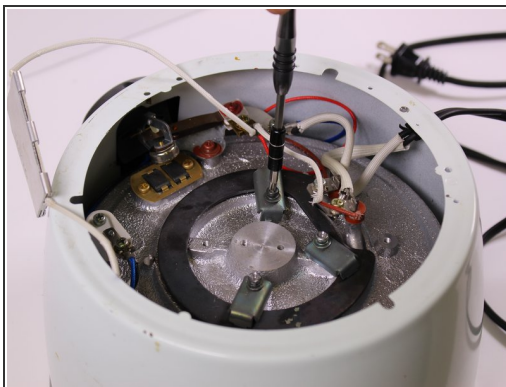
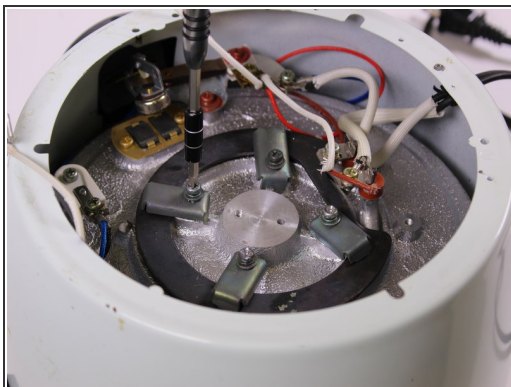
- Remove the one 7 mm Phillips screw from the side of the brass panel.

Step 4



- Remove the 6mm Phillips screw that holds the stainless plate.

Step 5



- Remove all four of the 15mm Phillips screws from all four of the brackets that hold the heating element in place

Step 6



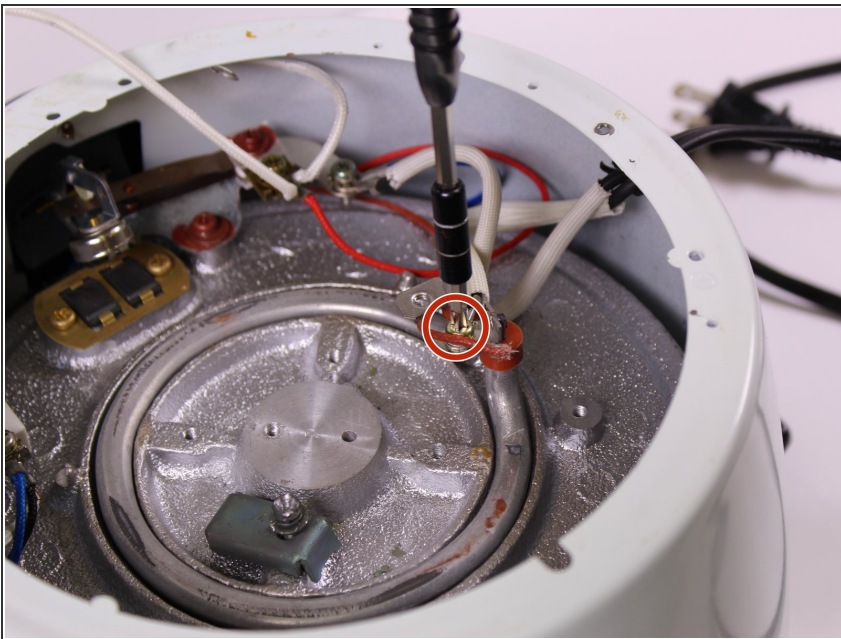
- Using your hands, remove the heating plate that is on top of heating element.

Step 7



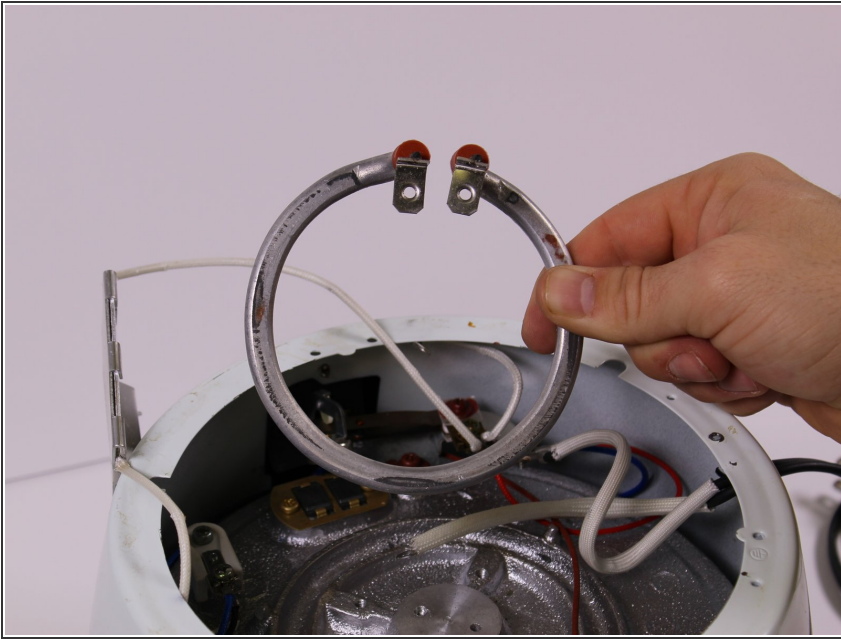
- Remove the 7mm Phillips screw that holds the white wire connected to the heating element.

Step 8



- Remove the 7mm Phillips screw that holds the white & maroon wires connected to the heating element.

Step 9



- Using, your hands, take out the heating element and replace it with a new one.

To reassemble your device, follow these instructions in reverse order.