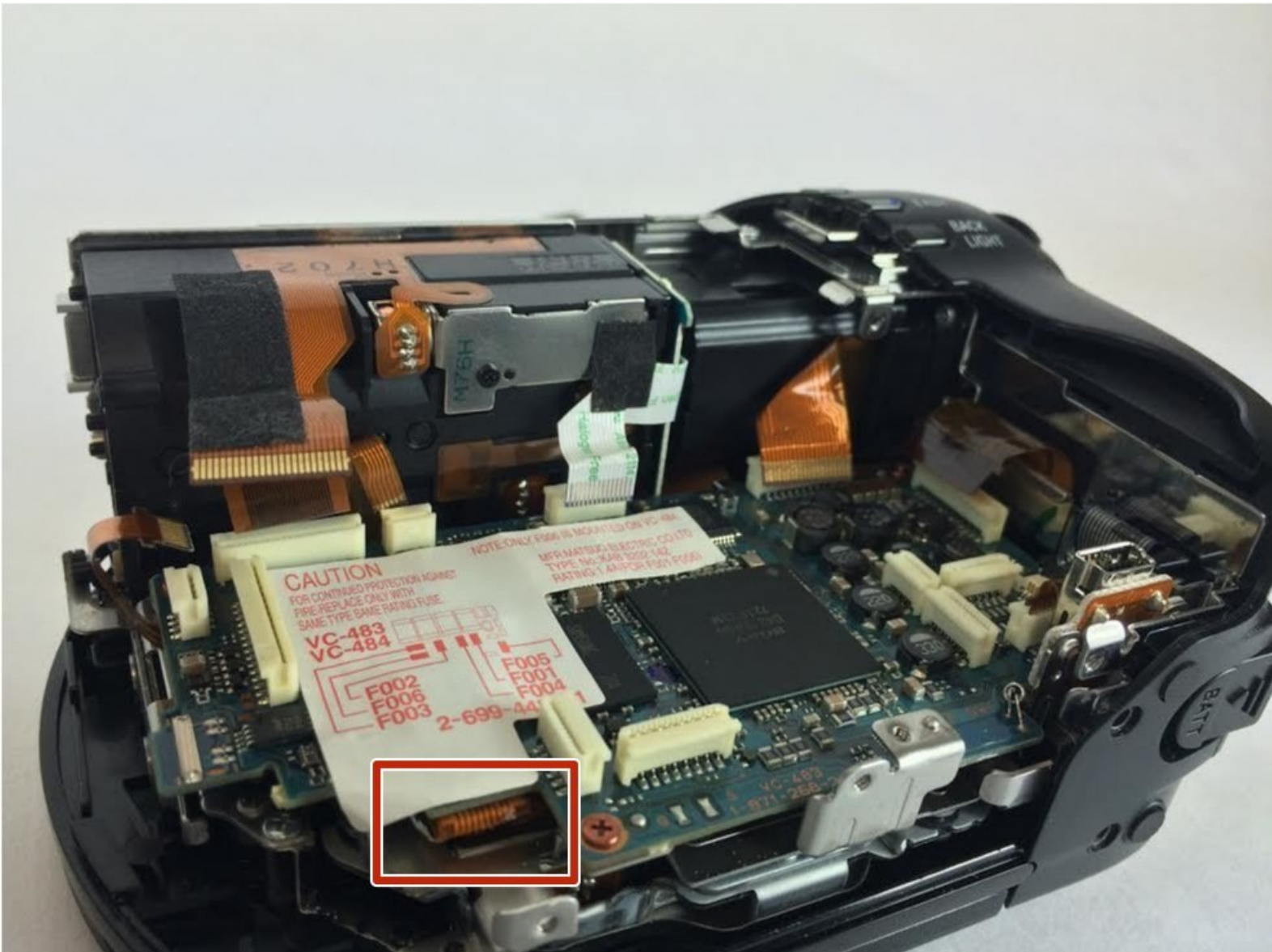




Sony DCR-DVD 108 Motherboard Replacement

This guide will show the quickest way to replace the motherboard of this camera.

Written By: Elijah DeWolf



INTRODUCTION

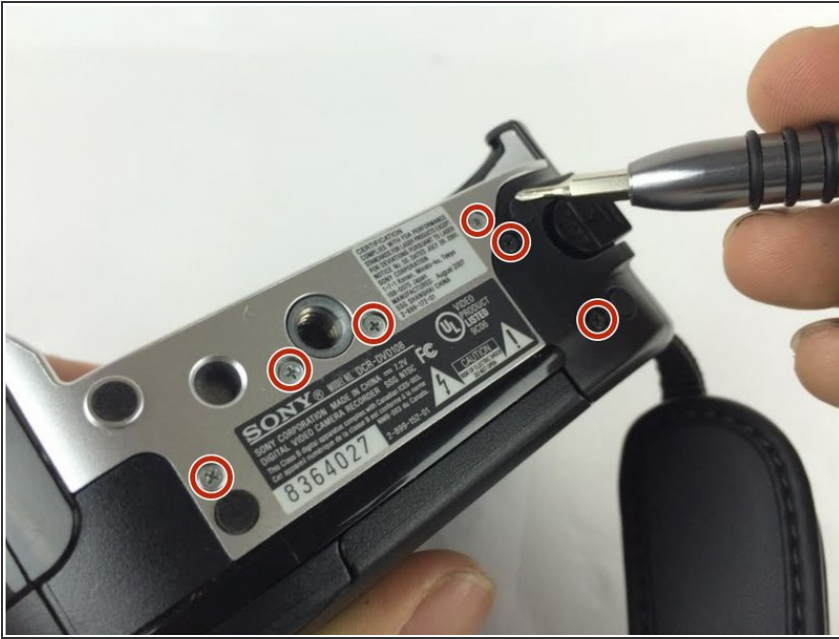
The motherboard paramount for the proper function of the camera, basically acting like a "brain." This guide will serve as check for electronic connections, and a full removal procedure of this critical component.



TOOLS:

- [Spudger](#) (1)
 - [JIS Driver Set](#) (1)
 - [Phillips #0 Screwdriver](#) (1)
-

Step 1 — Sony DCR-DVD 108 Case Disassembly



- Remove all the 4.3mm screws on the bottom using a J000 Phillips screwdriver. There should be seven screws (4 silver, 2 black).

Step 2



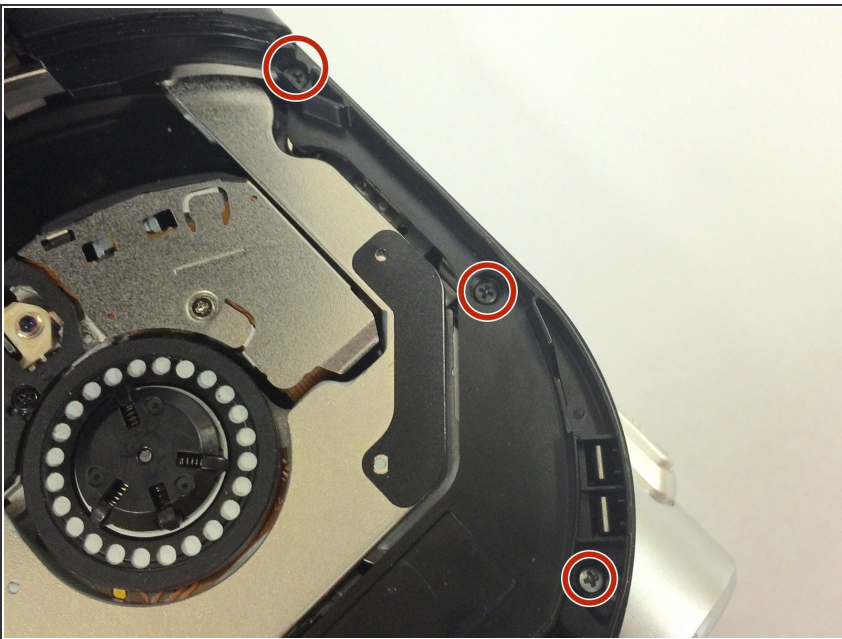
- Remove the 5mm #0 Phillips screws on the underside of the LCD tuck-a-way.

Step 3



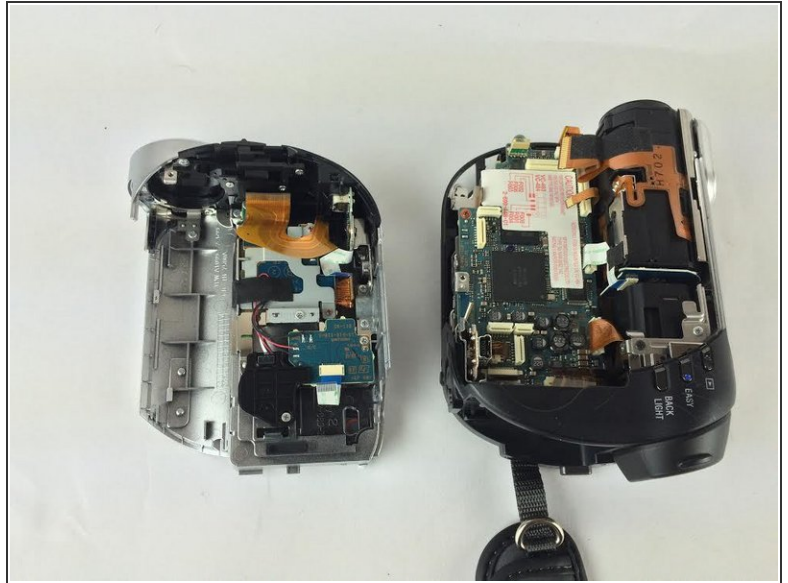
- Remove the 2mm #0 Phillips screw behind the battery.

Step 4



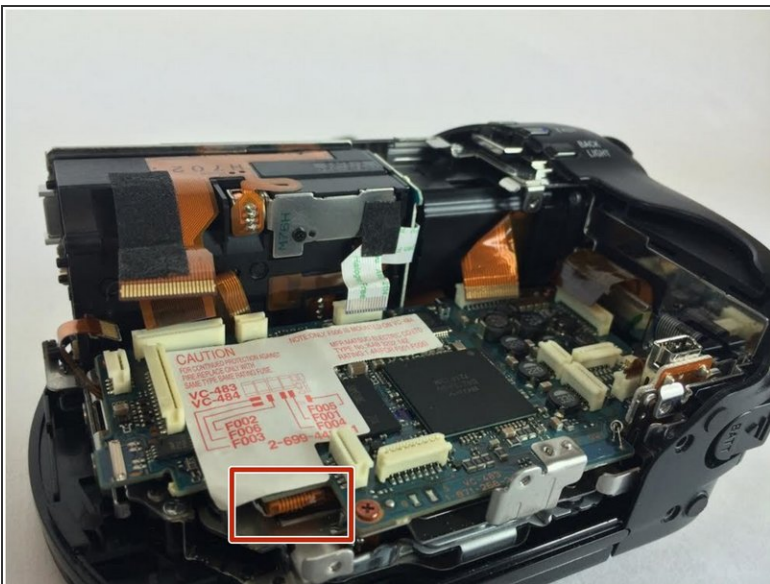
- Open the dvd cover and remove the 3 4.3mm phillips screws. Including ones in the corners that may be hidden.

Step 5



- Once all the screws are removed you can safely pry open the camera case using a spudger.

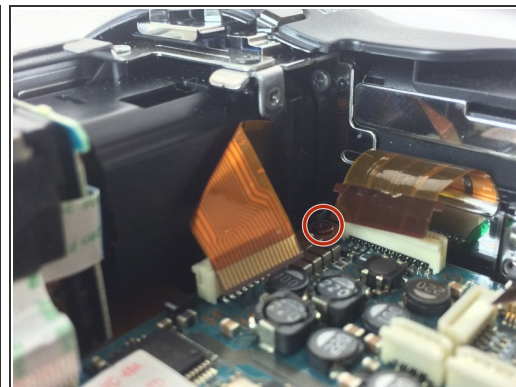
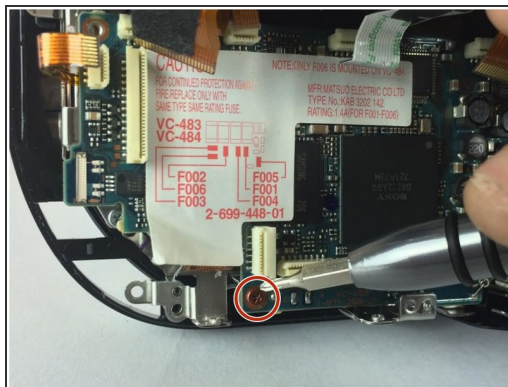
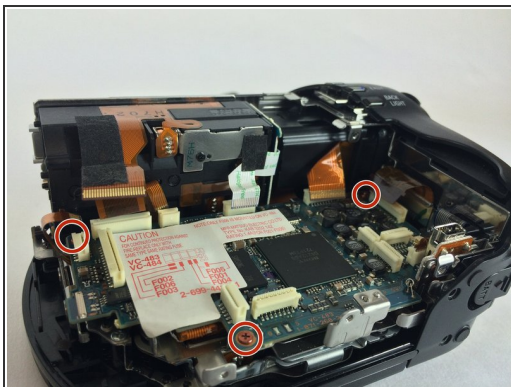
Step 6 — Motherboard



- Remove all ribbon connectors from the motherboard using tweezers. Simply grab each ribbon cable and pull straight out of the connector.
- ⚠ Be careful not to bend the ribbon cables.
- There is a hidden wire on the bottom of the board that should also be removed.

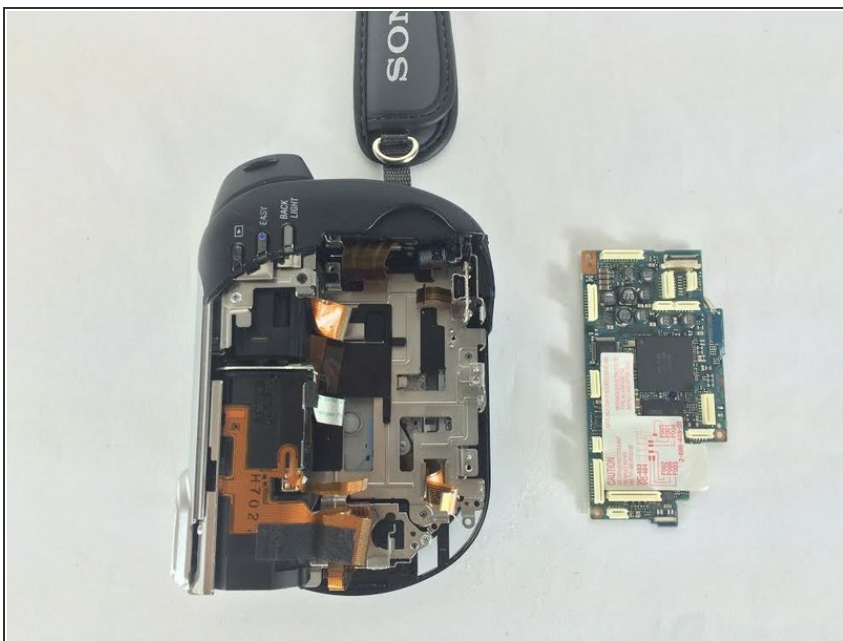
This document was generated on 2020-11-19 09:30:16 AM (MST).

Step 7



- Remove 3 brown copper screws. Each copper screw has a #0 Phillips head and is 2.8mm in length.

Step 8



- Lift the motherboard up from the outside edges to remove.

In order to reassemble your device, follow these instructions in reverse order.