



# Dremel 7300 MiniMite Cordless Shaft Lock Assembly Replacement

This guide will help you replace the shaft lock assembly for your Dremel 7300 MiniMite Cordless.

Written By: Kat



---

## INTRODUCTION

Use this guide to replace a damaged or lost shaft lock assembly in your Dremel 7300 MiniMite Cordless.

The shaft lock assembly is a locking mechanism that allows the Dremel bit to be replaced. The assembly holds the motor shaft in place when the shaft lock button is pressed, which stops the shaft from spinning and lets the bit be removed by hand. When the shaft lock assembly is damaged (commonly from the Dremel being dropped), the shaft lock button may [no longer work properly](#).



### TOOLS:

- [TR10 Torx Security Screwdriver](#) (1)
-

## Step 1 — Battery



- Pull back on the release tabs to disconnect the battery pack from the housing.
- ⓘ When installing a new battery, you may need to charge it before using it.

## Step 2 — Motor-Shaft Assembly



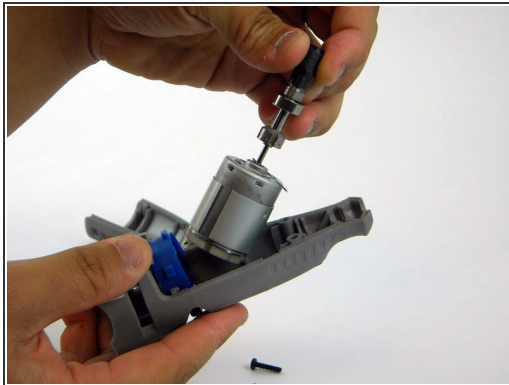
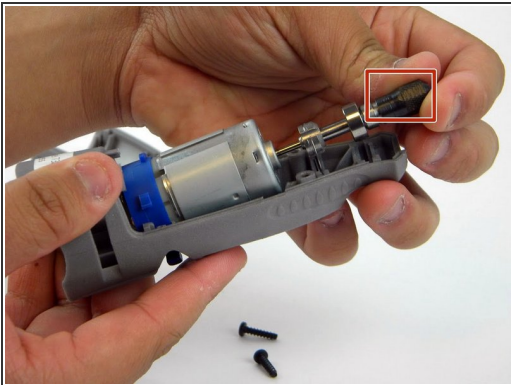
- Remove the two screws from the back of the device with the TR10 Torx Security screwdriver.
- ⚠ Make sure you have removed the battery before proceeding as accidentally powering-on the device while disassembling is dangerous due to the high-speed components inside.

### Step 3



- Lift off the unscrewed plastic cover at an angle, away from the tip of the device.
- ❗ Gently lift the cover. It won't take much force to remove it.

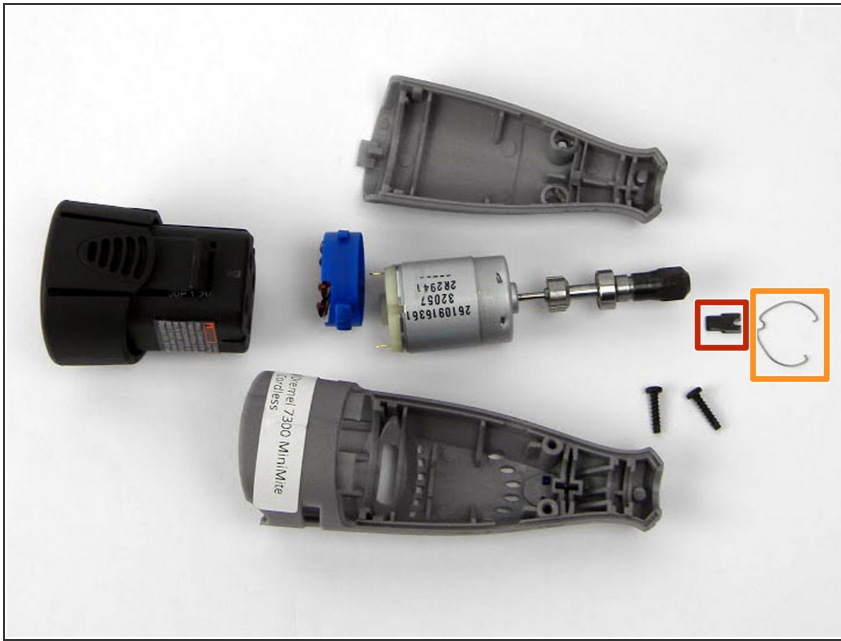
### Step 4



- Lift the tip of the motor-shaft assembly gently, then pull the assembly out.
- ❗ The blue battery contact and the spring for the shaft lock button may pop out when you remove the motor-shaft assembly. Make sure to keep track of these pieces, as they are very small.



## Step 5 — Shaft Lock Assembly

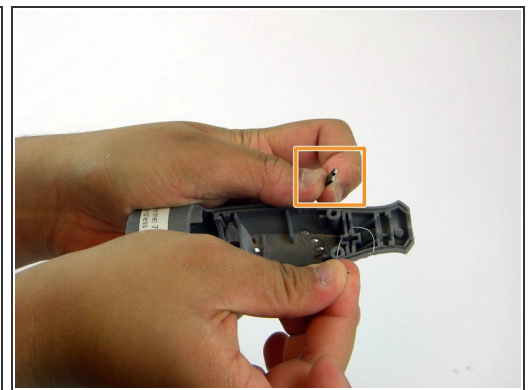
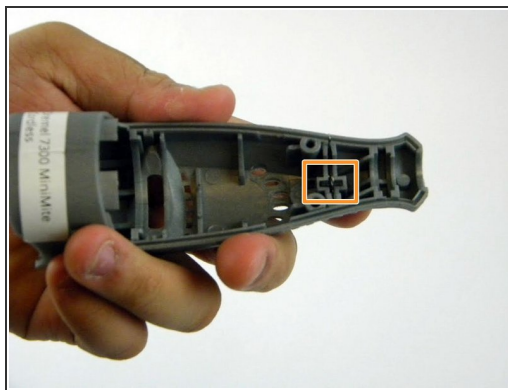
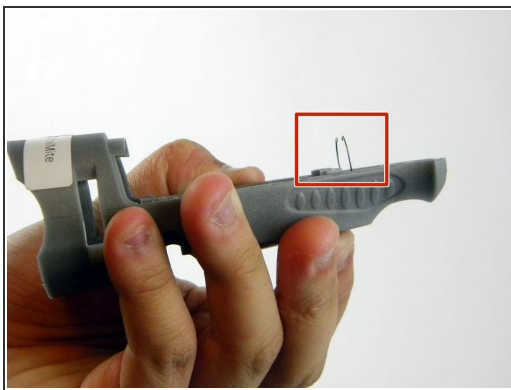


- There are two pieces that make up the shaft lock assembly:

- The key.
- The wire ring.

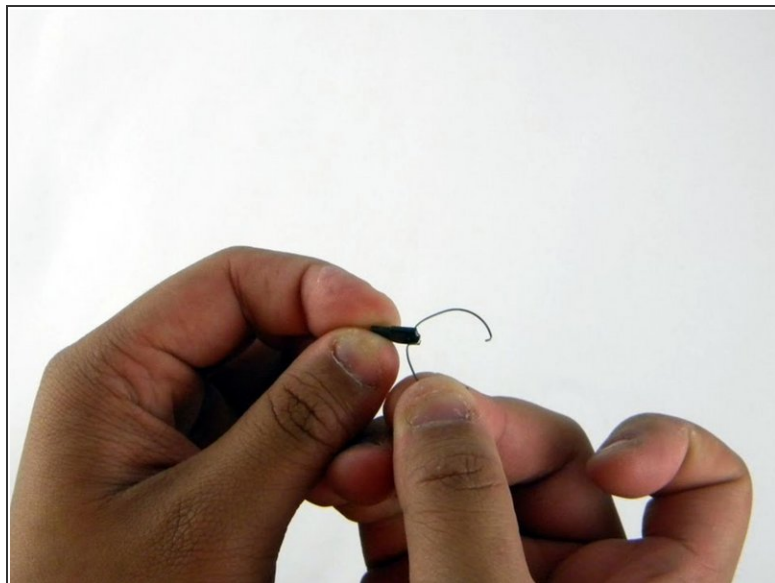
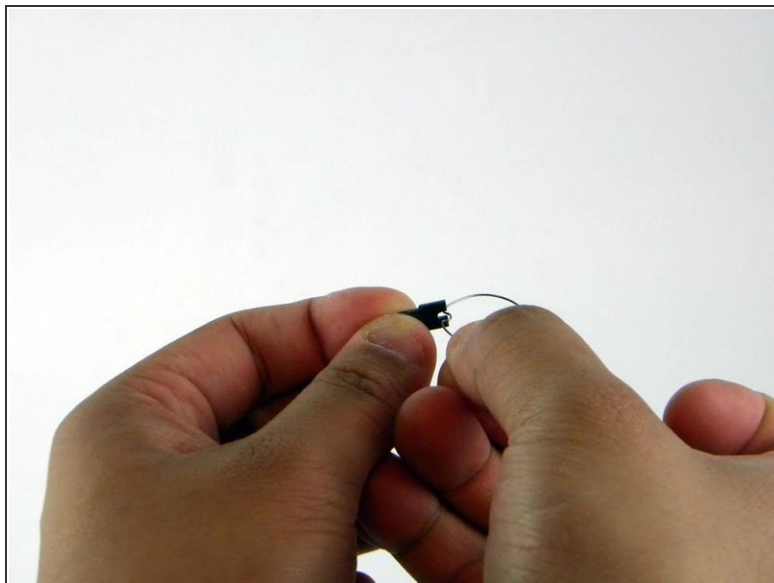
**i** The key holds the wire ring in place, and the wire ring secures the motor shaft.

## Step 6



- Remove the wire ring from the device.
- i** The wire ring may have come out when the motor-shaft assembly was removed.
- Remove the key from its slot.

## Step 7



- Ensure that the shaft lock assembly fits together properly when reassembling the device.
- ⓘ The notch in the wire ring should fit on the key as pictured.

To reassemble your device, follow these instructions in reverse order.