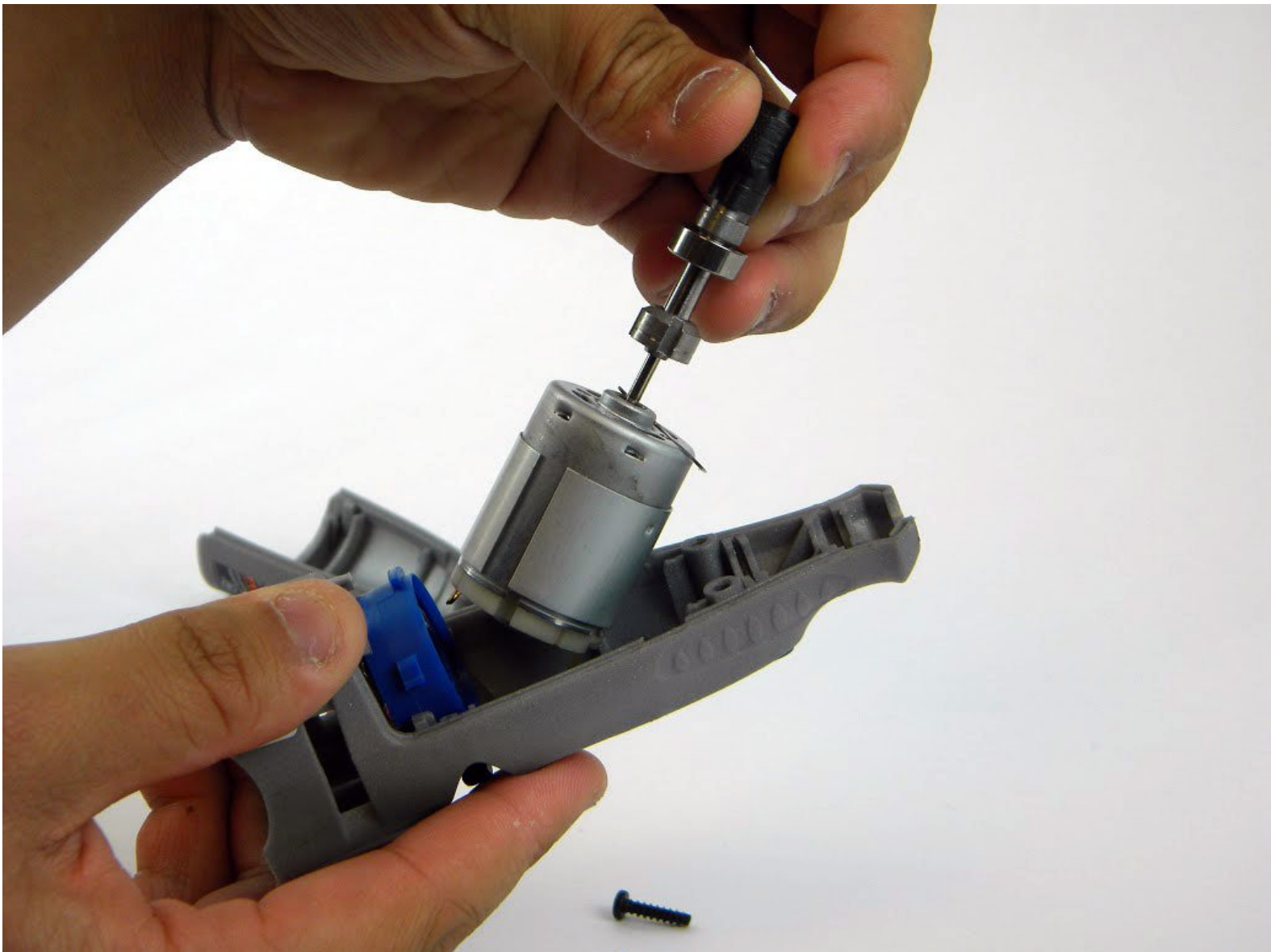




Dremel 7300 MiniMite Cordless Motor-Shaft Assembly Replacement

This guide will walk you through how to replace the motor-shaft assembly for the Dremel 7300 Mini Mite Cordless Device.

Written By: Michael Smith



INTRODUCTION

If the motor burns up or the power switch breaks, you are going to need a whole new motor and shaft for the device, as they come as one piece. This guide will show how to disassemble and remove the motor-shaft assembly.



TOOLS:

- [TR10 Torx Security Screwdriver](#) (1)
-

Step 1 — Battery



- Pull back on the release tabs to disconnect the battery pack from the housing.
- ⓘ When installing a new battery, you may need to charge it before using it.

Step 2 — Motor-Shaft Assembly



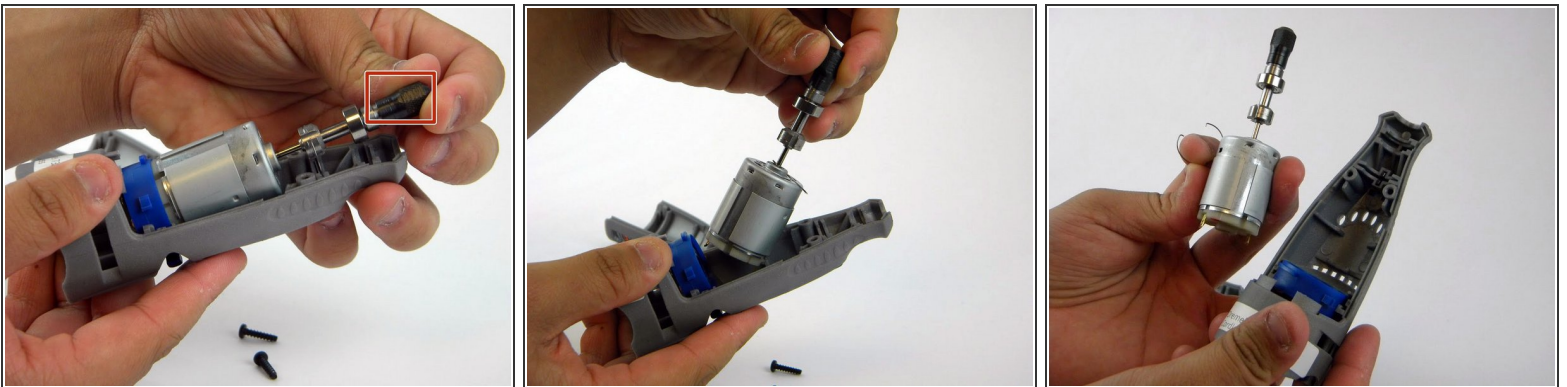
- Remove the two screws from the back of the device with the TR10 Torx Security screwdriver.
- ⚠ Make sure you have removed the battery before proceeding as accidentally powering-on the device while disassembling is dangerous due to the high-speed components inside.

Step 3



- Lift off the unscrewed plastic cover at an angle, away from the tip of the device.
- ⓘ Gently lift the cover. It won't take much force to remove it.

Step 4



- Lift the tip of the motor-shaft assembly gently, then pull the assembly out.
- ⓘ The blue battery contact and the spring for the shaft lock button may pop out when you remove the motor-shaft assembly. Make sure to keep track of these pieces, as they are very small.

To reassemble your device, follow these instructions in reverse order.