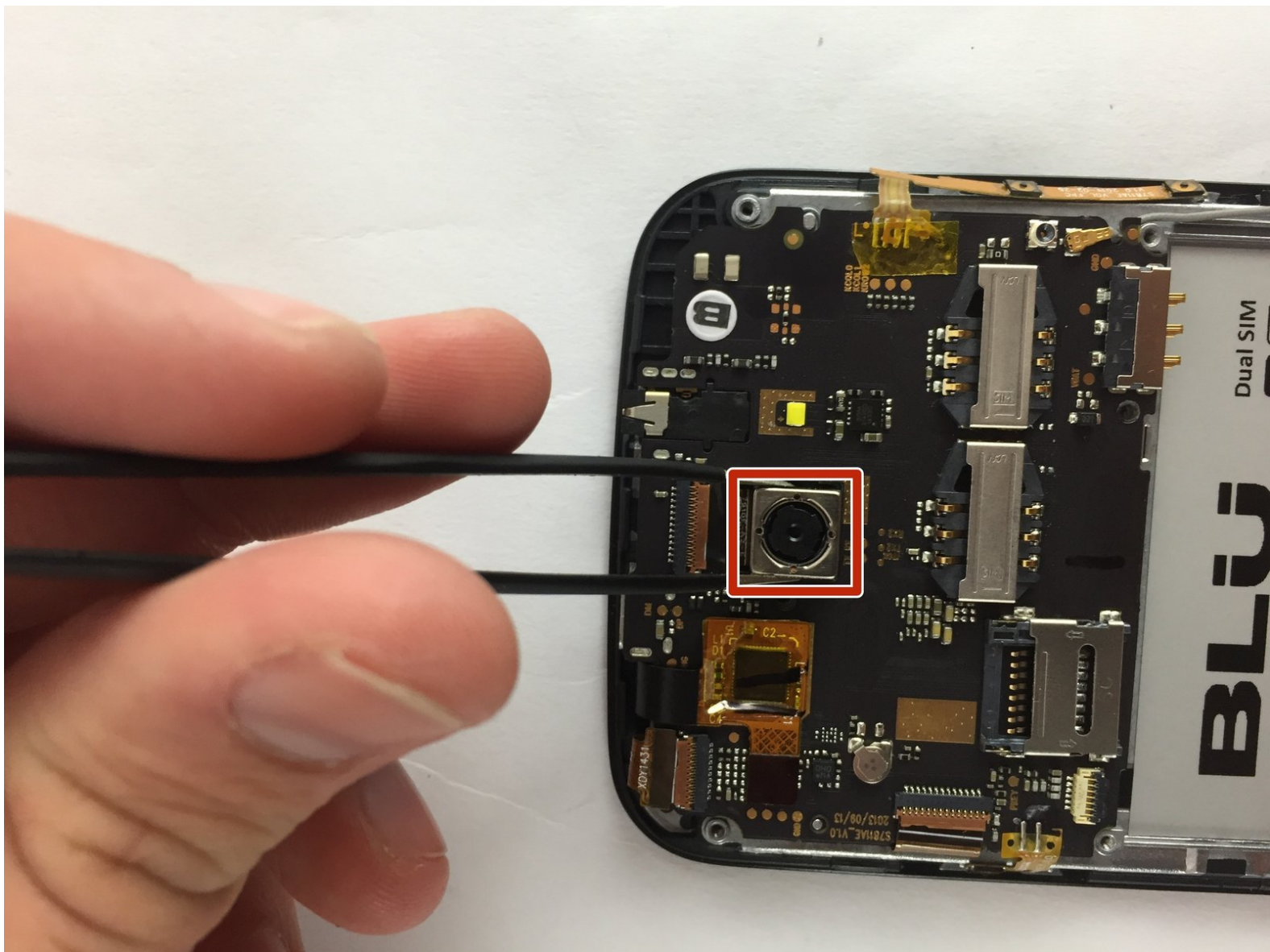




BLU Studio 5.0 II Rear Camera Replacement

This guide will show you how to replace the rear camera.

Written By: Ricardo Sarabia



INTRODUCTION

Use this guide in order to successfully remove and replace the rear-facing camera on your BLU Studio 5.0 II phone.

TOOLS:

- [Tweezers](#) (1)
 - [Spudger](#) (1)
 - [Phillips #00 Screwdriver](#) (1)
-

Step 1 — Battery



- ⚠ Turn off your phone before disassembling the device.
- Locate the small opening on the bottom corner of the back case.

Step 2



- Use your finger to open the back case by slowly pulling it on the open slot.
- Once the case is lifted on the corner, slide your finger along the edge of the phone to remove the rest of the case.

Step 3



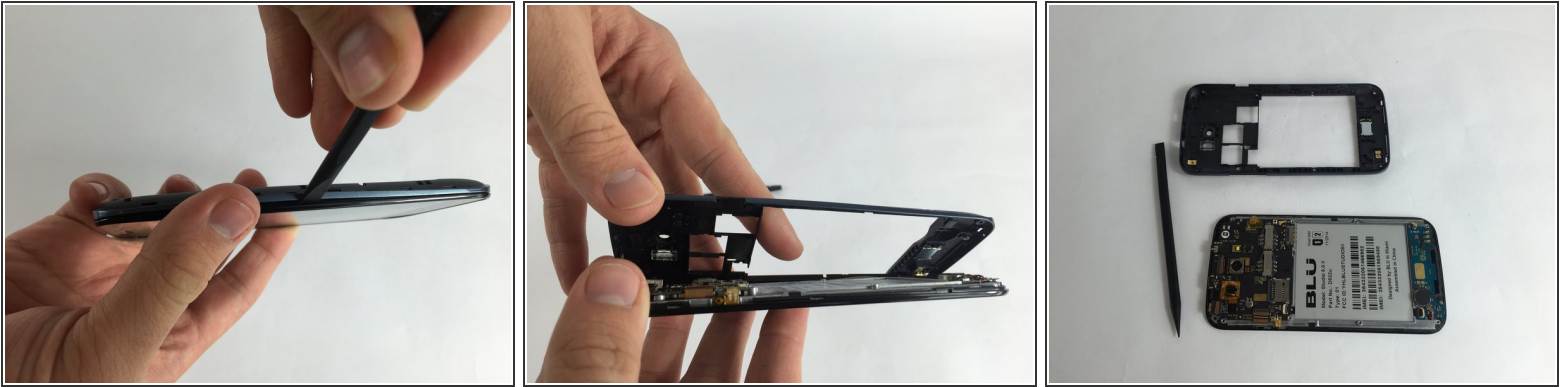
- Locate the opening slot at the bottom of the battery.
- Use your finger to lift the battery and remove it from the case.

Step 4 — Back Case



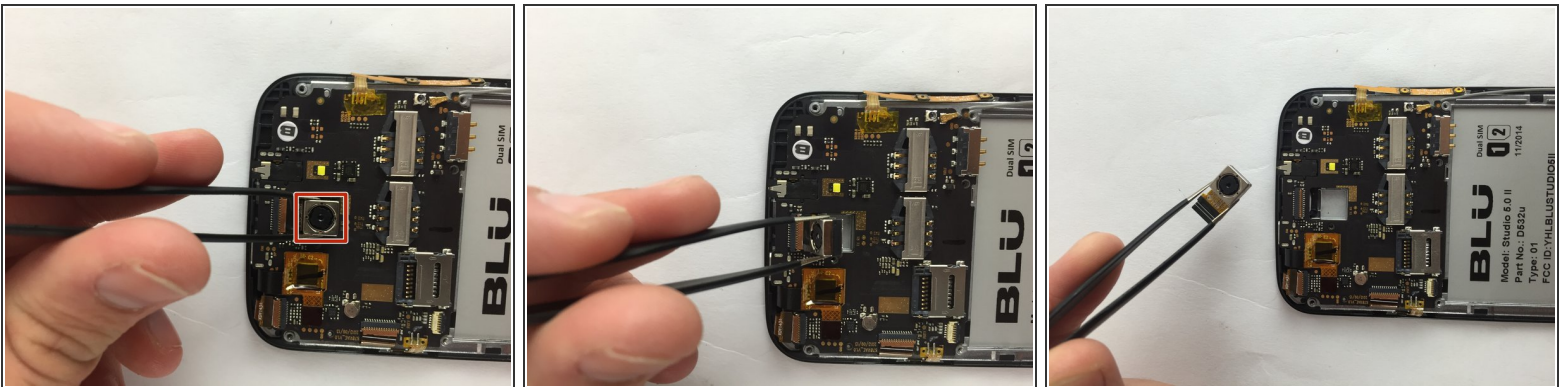
- Locate the four 3mm screws on each side of the back panel.
- Use a Phillips #00 screwdriver to remove the eight screws.

Step 5



- Carefully use a spudger to start opening the back case by inserting it between the black and blue lines on the side of the phone.
- With the help of your fingers, continue to remove the back case by sliding it through the opening.

Step 6 — Rear Camera



- Locate the camera, which is centered on the upper part of the motherboard.
- Use tweezers to lift the camera slowly.
- Carefully pull the camera out of the motherboard.

To reassemble your device, follow these instructions in reverse order.