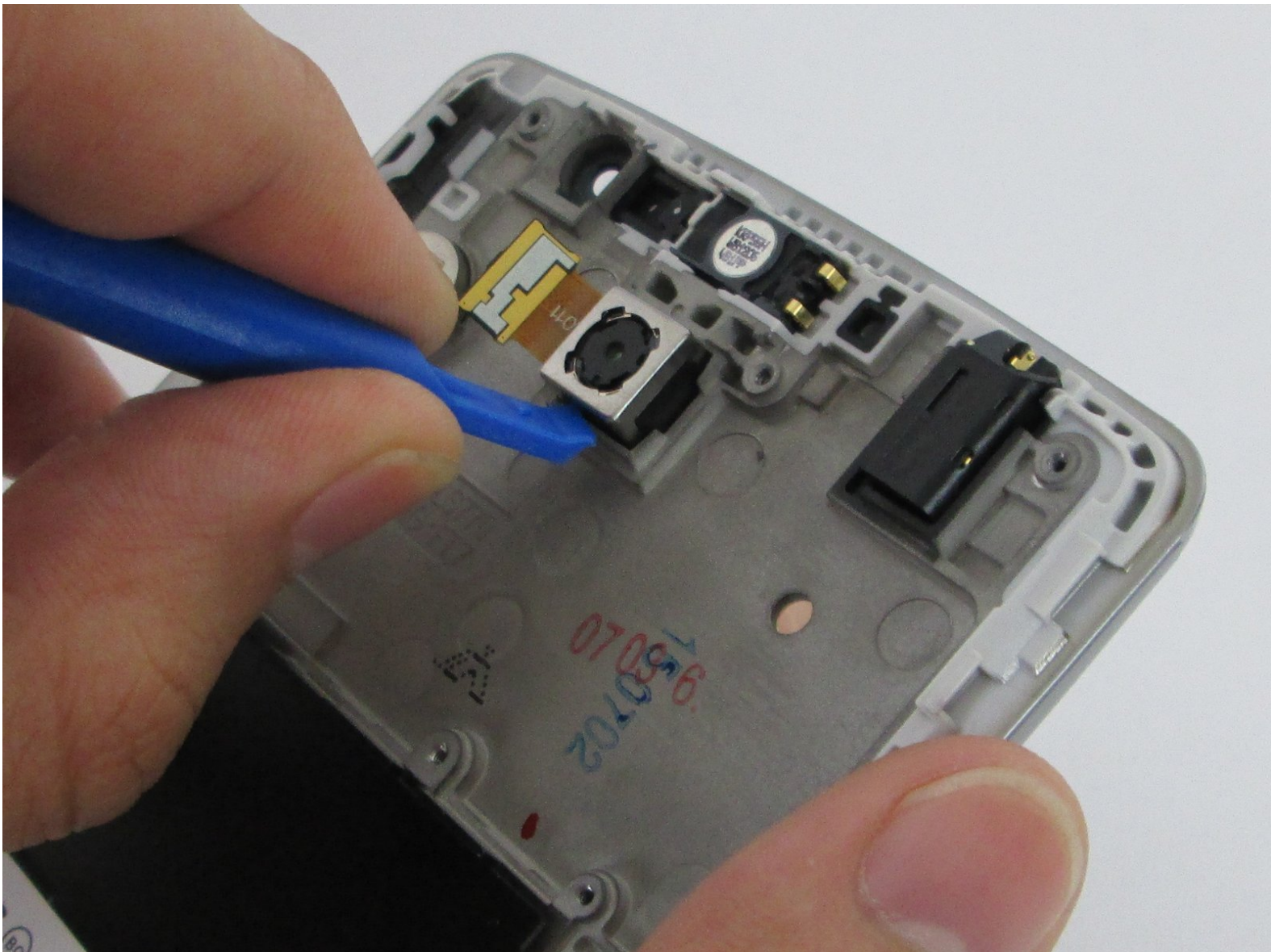




# LG G Stylo Rear Camera Replacement

This guide will walk you through replacing the rear camera on your LG G Stylo.

Written By: Kimberly Young



## INTRODUCTION

From taking off the back cover to placing in your new camera, this guide will lay out each step. You are experiencing issues with your back camera, this guide has everything you will need to know.



### TOOLS:

- [iFixit Opening Tools](#) (1)
- [Phillips #00 Screwdriver](#) (1)





### PARTS:

- [LG G4 Rear Camera](#) (1)
- LG G Stylo uses the same parts*

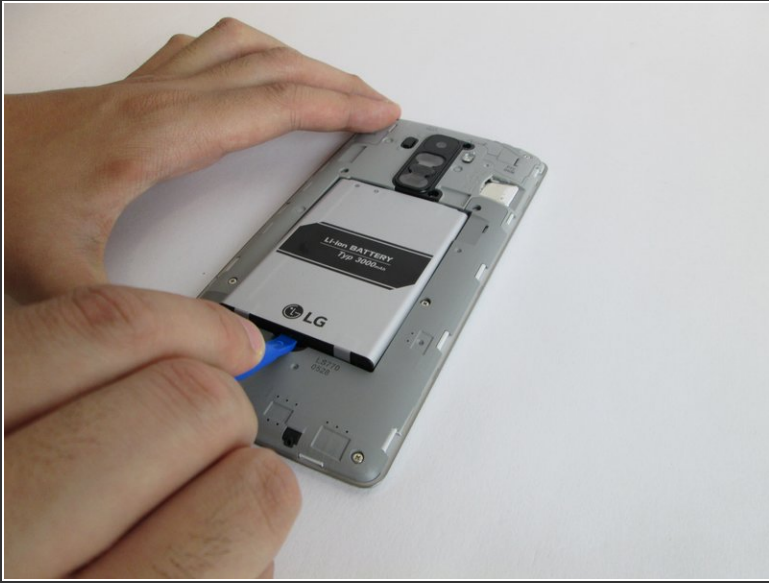
## Step 1 — Battery



 Make sure that you power off the phone before beginning.

- Remove the back cover by placing the plastic opening tool on the bottom left side of the device and gently prying up.
-  There is a small slit that fits the plastic opening tool perfectly on the left side.

## Step 2



- Insert the plastic opening tool into the indent at the bottom of the battery and lift up. Fully remove the battery with your fingers.

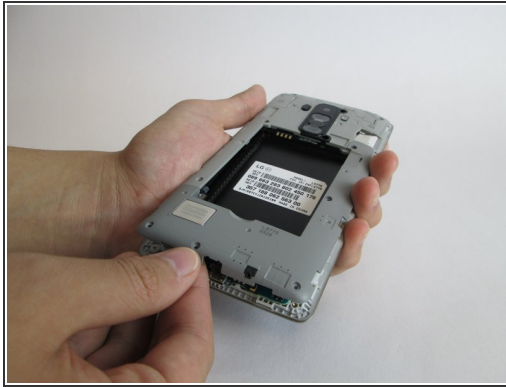
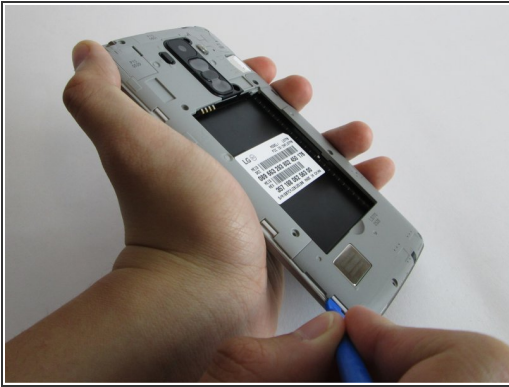
## Step 3 — Motherboard



- Carefully use the Phillips #00 screwdriver to remove the eleven 3.9mm visible screws found on the back. The screws to be removed are marked with the given indicators.

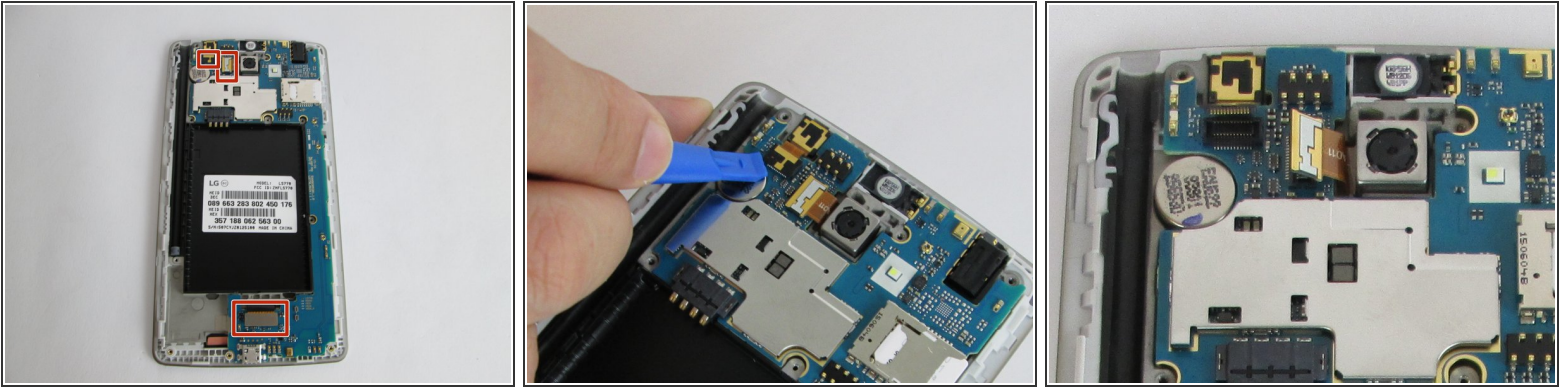


## Step 4



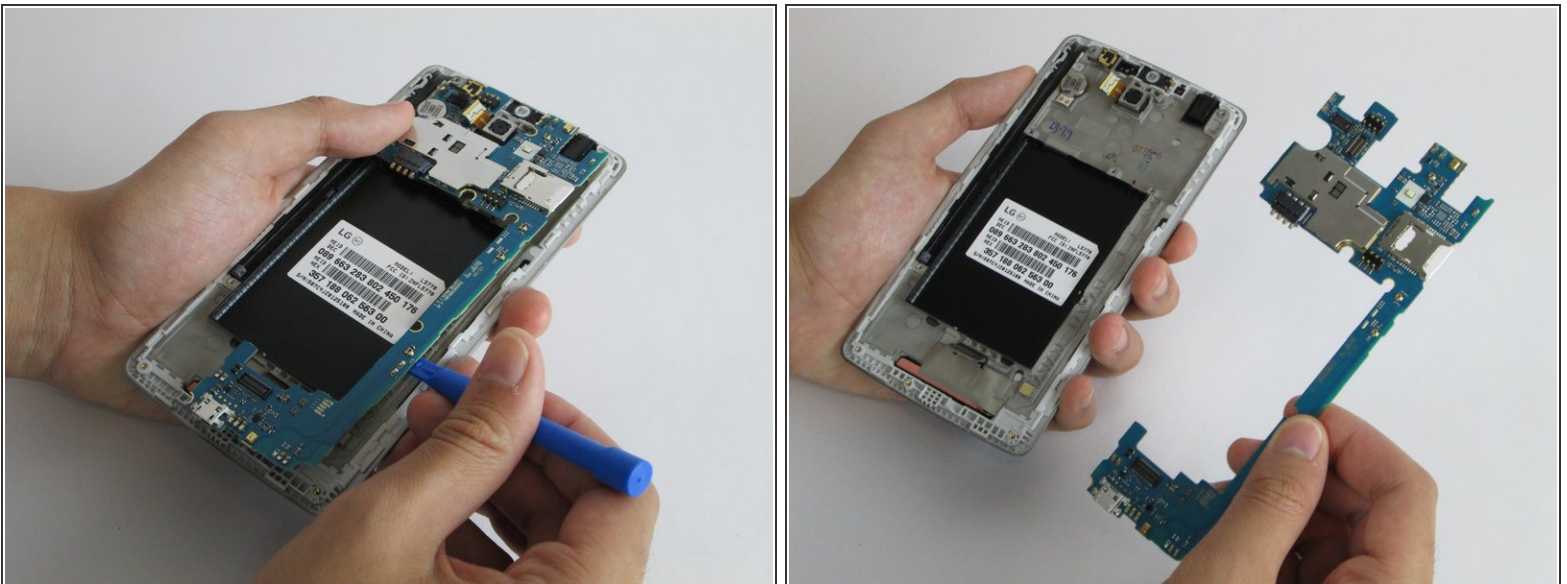
- When you have finished removing all of the screws, place the plastic opening tool in the groove at the bottom left corner of the motherboard cover and lift up.
- Make sure to remove the SIM card before you remove the motherboard cover. You can get the cover off without doing this, but the SIM card will be stuck underneath the cover once you put it back together.
- ⓘ This part could be more difficult if you have never removed the motherboard cover. If difficulty arises, pry the plastic opening tool into each groove along the edge of the motherboard cover until it releases.
- Once a clip is released, you can detach the motherboard cover with your fingers and set aside.

## Step 5



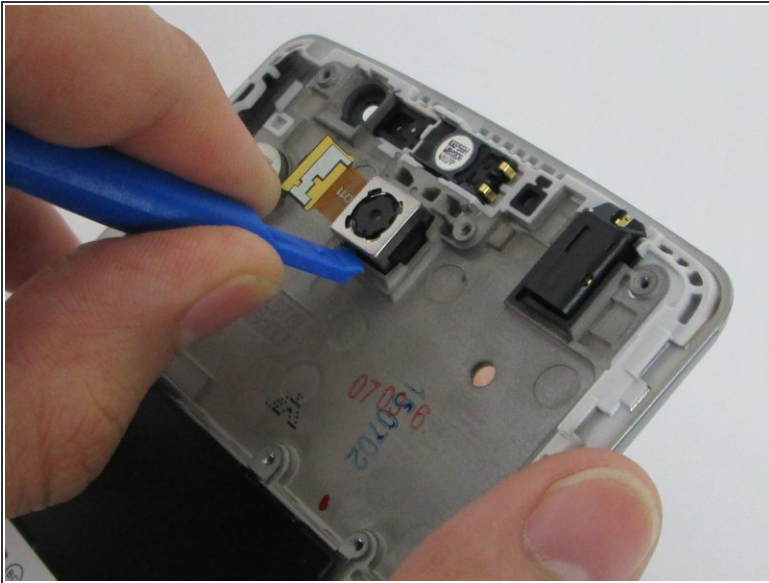
- Carefully place the plastic opening tool under the ribbons where the cables are connecting and lift up to detach the cables.
- ⚠ Keep in mind to be careful with the ribbons, because they are small components and important for the device's functionality.
- ℹ The third photo attached depicts what the ribbons look like when they are successfully detached.

## Step 6



- Fully remove the motherboard by prying upward with the plastic opening tool.
- ℹ This step will be quite simple if all the ribbons have been detached correctly.

## Step 7 — Rear Camera



- Gently wedge the plastic opening tool under the ribbon where the rear camera cable is connected. Slowly lift up to detach the cable from the mother board and replace the rear camera accordingly.
- ⓘ The rear camera will have an adhesive so you will have to carefully add pressure while lifting up.

To reassemble your device, follow these instructions in reverse order.