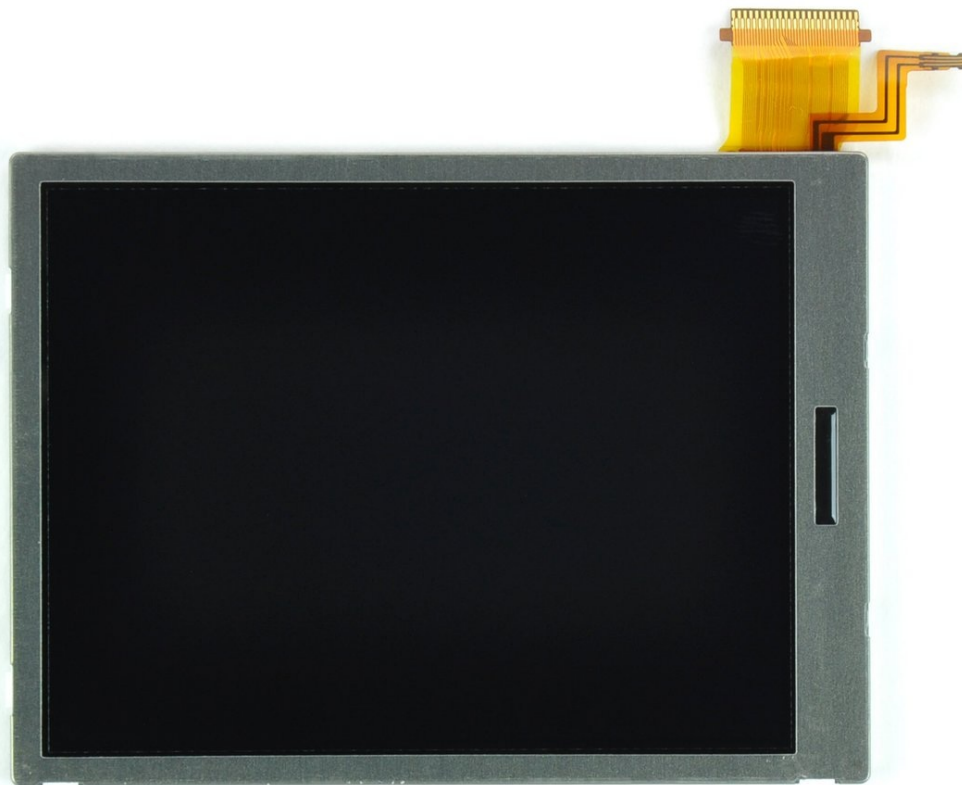




Nintendo 3DS Lower LCD Replacement

Only getting half of your 3DS gaming...

Written By: David Hodson



INTRODUCTION

Only getting half of your 3DS gaming experience? Replace the lower LCD to get the full view.

🔧 TOOLS:

Tweezers (1)
iFixit Opening Tool (1)
Spudger (1)
Phillips #00 Screwdriver (1)

⚙️ PARTS:

Nintendo 3DS Lower LCD (1)

Step 1 — Back Cover



- Unscrew the four Phillips #00 screws along the top of the back cover.

ⓘ The screws are held in place by locking washers, and will not come out of the back cover.

⚠️ The comments section is full of unlucky souls who will tell you that the screws here through step 4 will strip incredibly easily. Press down fairly hard, and go slow.

Step 2



① Hold the device in one hand and turn it over.

- Grab the top edge of the back cover with your opposite hand so that the cover does not fall back into place.

① Flip the 3DS over again so that the back cover is facing up.

- Pull the back cover up and away from the rest of the device to remove it.

Step 3 — Battery



- Insert a plastic opening tool into the notch in the lower case above the battery.
- Pry the battery up with the plastic opening tool.
- Grab the top edge of the battery and lift it out of the lower case.

Step 4 — Lower Case



- Remove the nine 6.3 mm black Phillips screws from the lower case.

⚠ These screws will strip very easily unless you use the correct size bit. Apply pressure to the screws while turning to avoid stripping them.

- Remove the 2.4 mm silver Phillips screw above the game cartridge slot.

Step 5



- Lift the bottom edge of the lower case off the rest of the 3DS.

⚠ There are still two ribbon cables connecting the mother board to the case, so be sure not to pull the lower case all the way off.

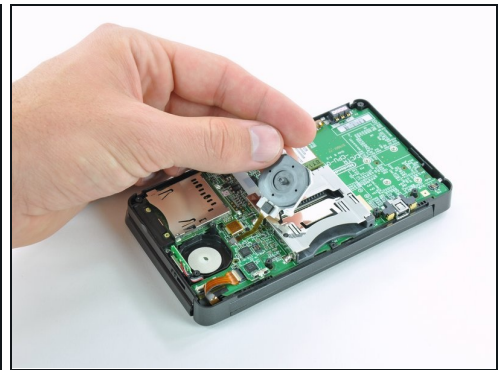
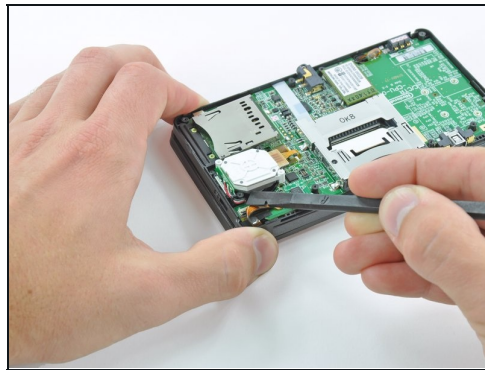
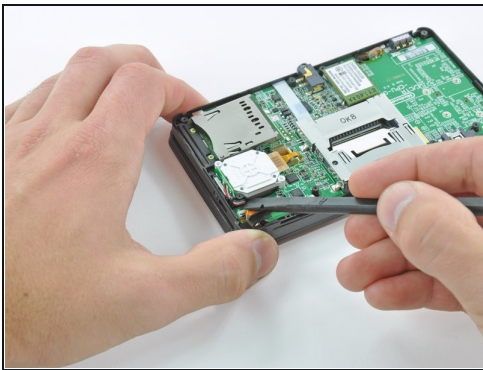
- Use a plastic opening tool to pry the shoulder button ribbon cables off their sockets on the motherboard.
- Remove the lower case from the device.

Step 6 — Circle Pad Joystick



- Remove the two 7.7 mm Phillips screws securing the back of the Circle Pad to the motherboard.

Step 7



- Use the flat end of a spudger to pry the back of the Circle Pad off the motherboard.
- Lift the Circle Pad joystick off the motherboard and lay it on its back so that the ribbon cable connector is accessible.

Step 8

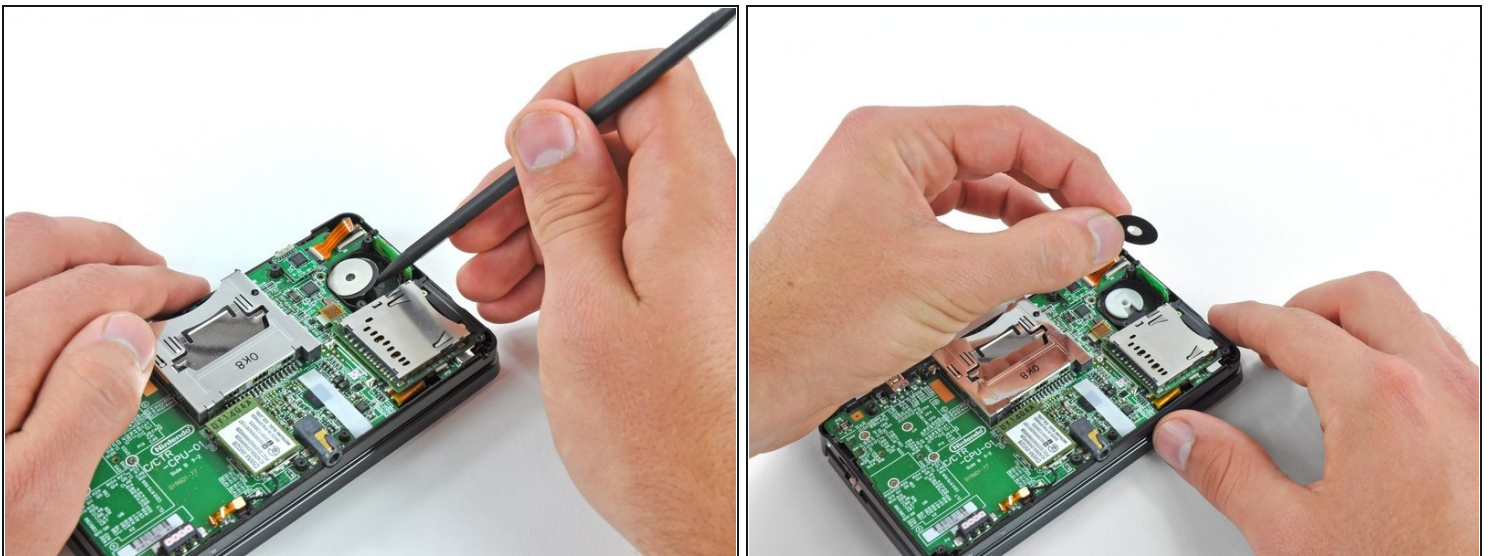


- Use the flat end of a spudger or your fingernail to flip up the retaining flap on the Circle Pad ribbon cable ZIF socket.

⚠ Be sure you are prying up on the hinged retaining flap, **not** the socket itself.

- Lift the Circle Pad joystick off the motherboard.

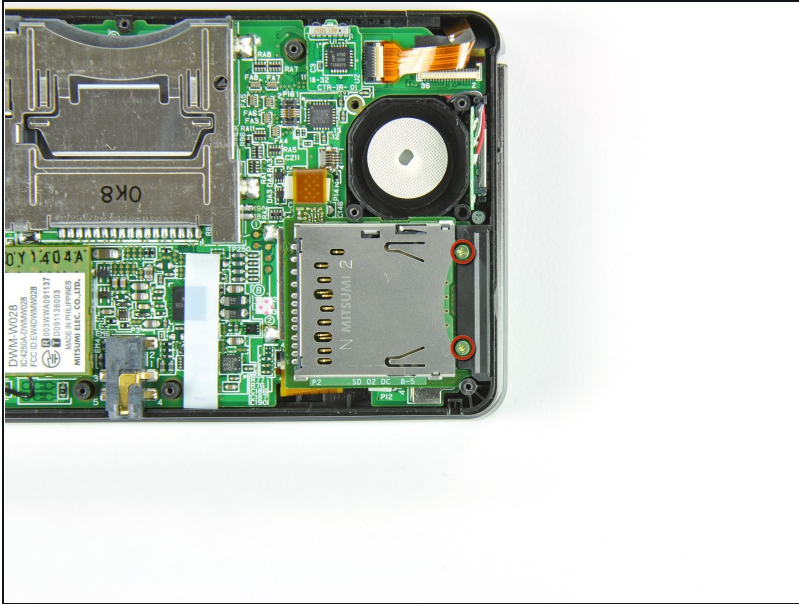
Step 9



ⓘ To decrease the chance of losing it during repairs, you may want to remove the two thin pads underneath the Circle Pad joystick.

- Use a spudger or screwdriver to lift the pads up and remove them from the device.

Step 10 — SD Board



- Remove the two 4.5 mm Phillips screws securing the SD board to the motherboard.

Step 11



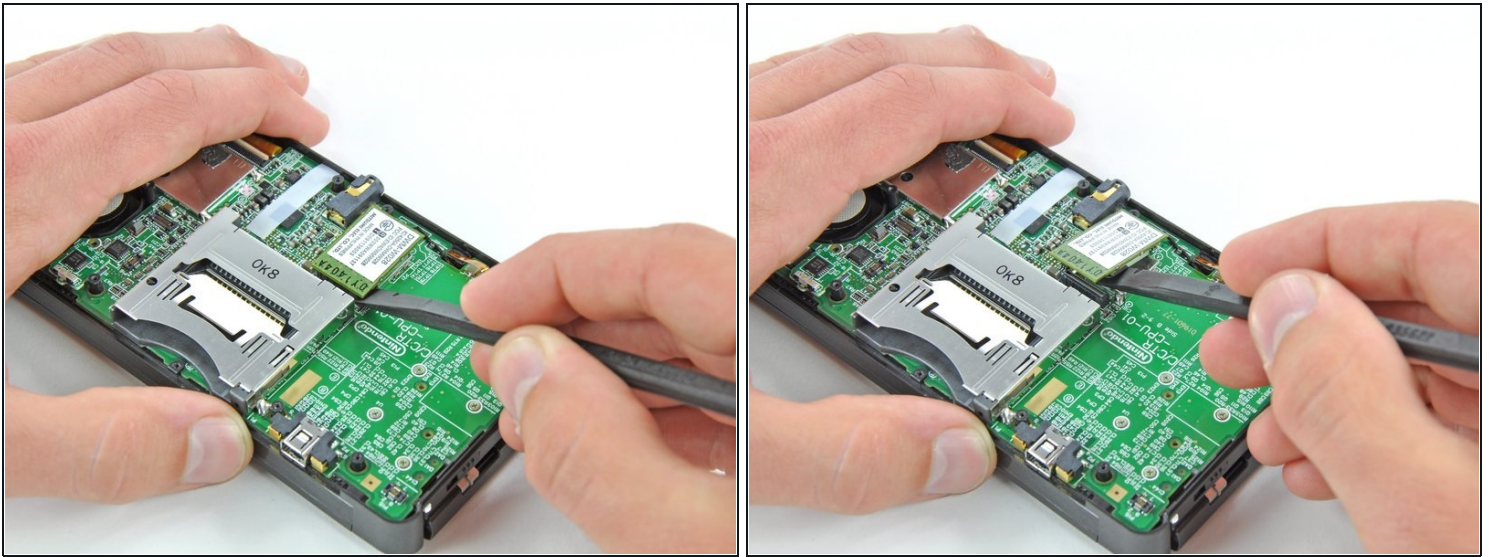
- Use the flat end of a spudger to pry the SD board ribbon cable connector off its socket on the motherboard.

Step 12



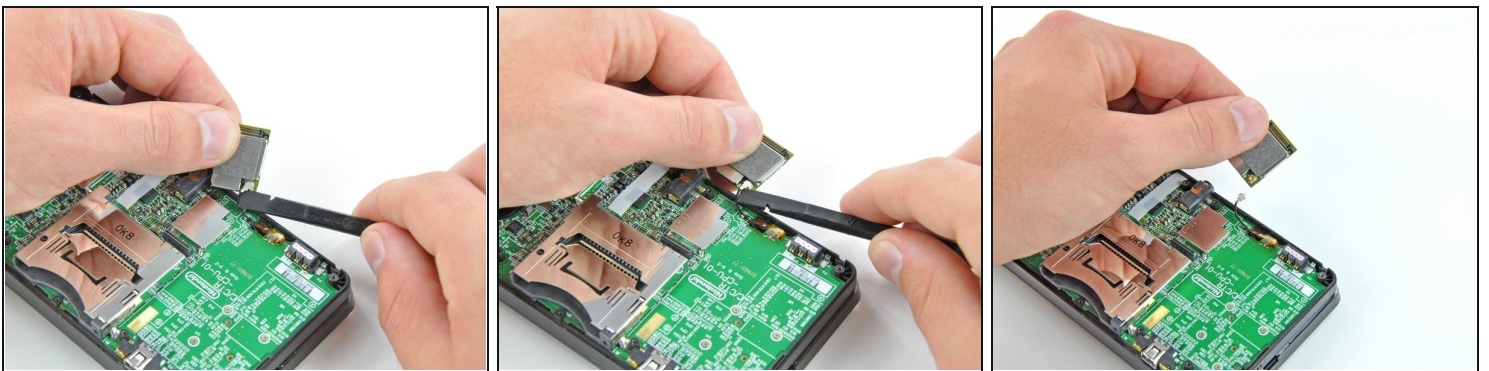
- Insert the flat end of a spudger between the SD board and the motherboard.
- Pry up **slowly** to loosen the SD board from the RF shield underneath it. If you pry too quickly, you may tear the shield or break its solder points.
- Run the spudger along the sides of the SD board to free it from the adhesive holding it in place.
- Once completely freed, lift the SD board straight off the motherboard.

Step 13 — Wi-Fi Board



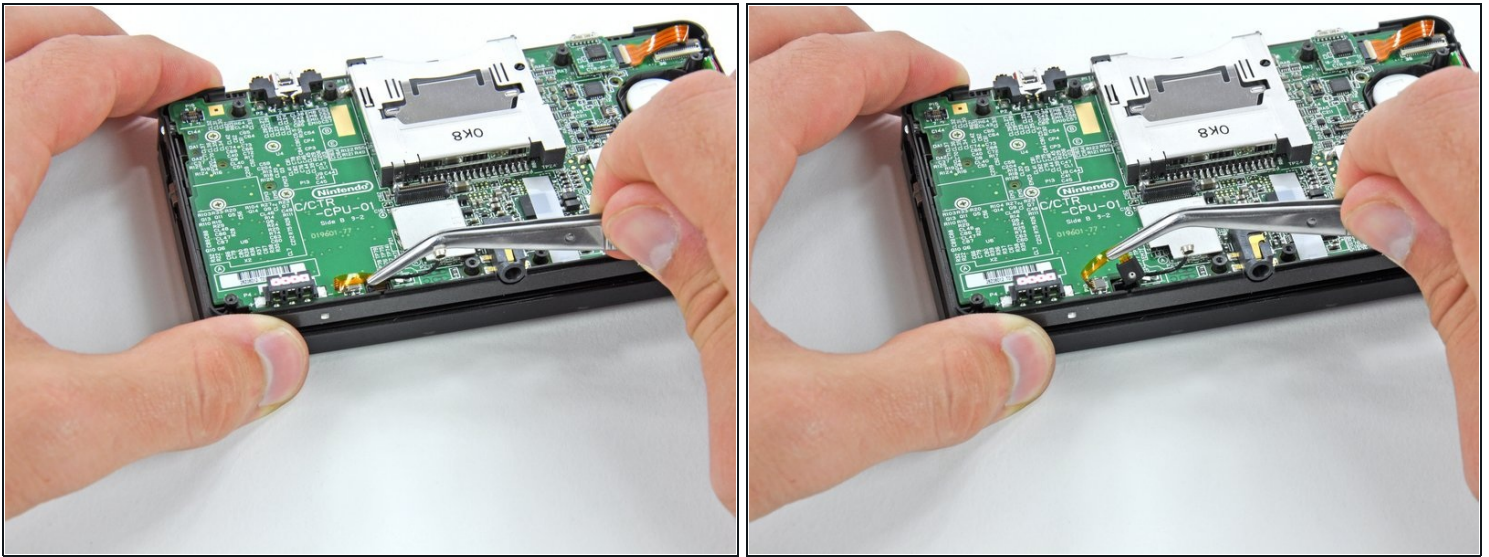
- Slide the flat end of a spudger under the corner of the Wi-Fi board, and lift it away from the motherboard.
- ⓘ The Wi-Fi antenna cable is still connected to the Wi-Fi board, so you cannot completely remove the Wi-Fi board yet.

Step 14



- ⓘ Lift the Wi-Fi board off the motherboard and rotate it so that the bottom side is facing up.
- Use the flat end of a spudger to pry the Wi-Fi antenna cable connector off its socket on the Wi-Fi board.
- Remove the Wi-Fi board from the device.

Step 15 — Motherboard Assembly



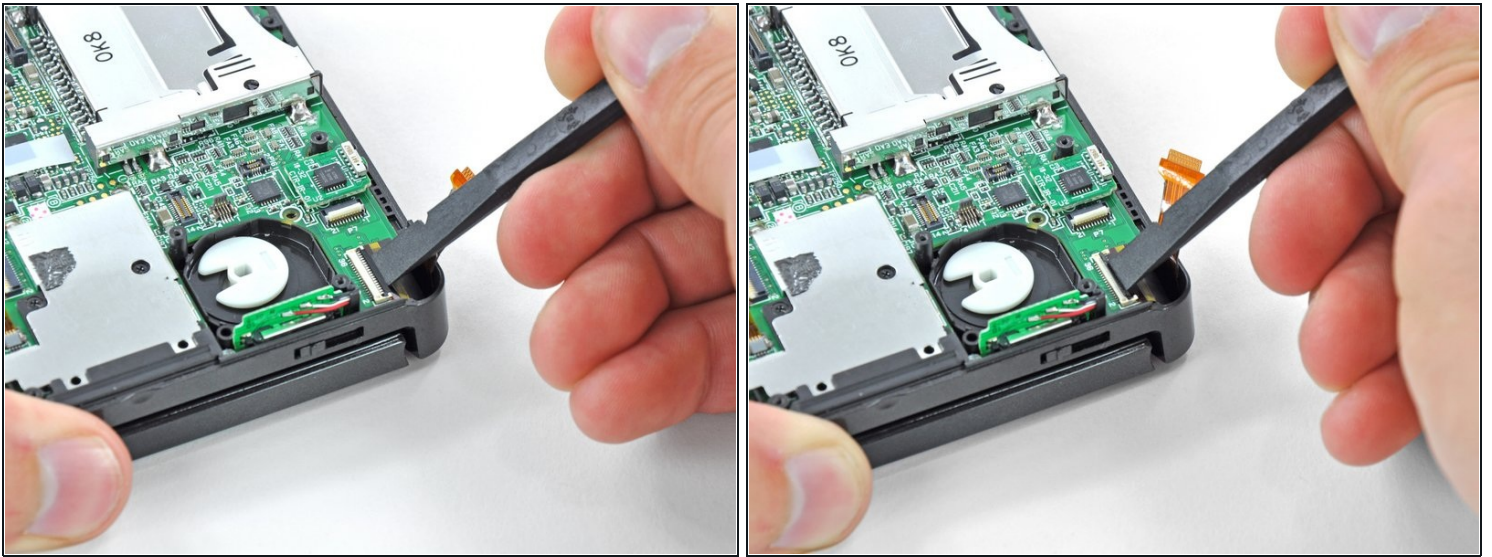
- Grasp the microphone ribbon cable near the microphone with a pair of tweezers.
- Pull the microphone straight up out of the upper case.

Step 16



- Use the flat end of a spudger or your fingernail to flip up the retaining flap on the speaker assembly ribbon cable ZIF socket.
- ⚠ Be sure you are prying up on the hinged retaining flap, NOT the socket itself. Damaging the socket or cable will result in a 3DS that will blink its power LED when you press the power button - and do nothing else.
- Disconnect the speaker assembly ribbon cable with a pair of tweezers.

Step 17

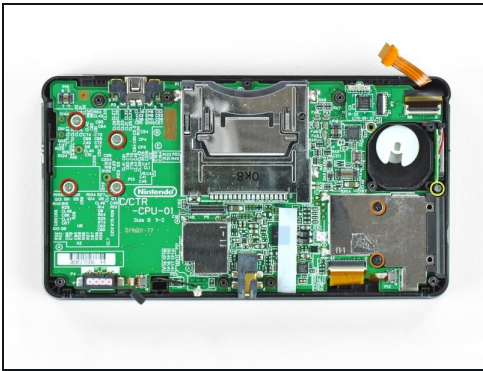


- Use the flat end of a spudger or your fingernail to flip up the retaining flap on the camera ribbon cable ZIF socket.

⚠ Be sure you are prying up on the hinged retaining flap, **not** the socket itself.

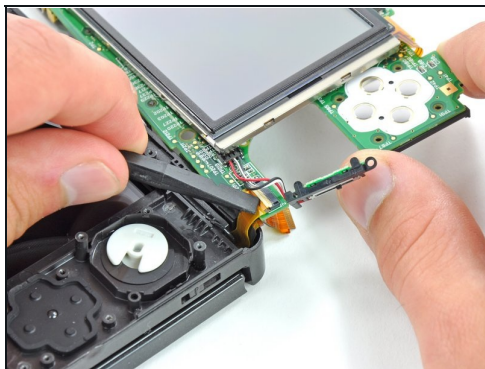
- ☑ When reassembling, note that the gold contacts face toward the motherboard (as opposed to the camera cable's gold contacts facing away).

Step 18



- Remove seven Phillips screws securing the motherboard to the upper case:
 - Four 2.5 mm gold screws
 - Two 3.5 mm black screws
 - One 2.5 mm silver screw
- ⓘ When you remove this screw the volume slider can fall out.
- Lift the side of the motherboard that sits along the bottom edge of the 3DS.

Step 19



- ⓘ Continue lifting the motherboard assembly and rotate it until it is resting next to the rest of the device.
- Use the flat end of a spudger or your fingernail to flip up the retaining flap on the LCD ribbon cable ZIF socket.

⚠ Be sure you are prying up on the hinged retaining flap, **not** the socket itself. Damaging the socket or cable will result in a 3DS that won't have a functional top screen.

Step 20



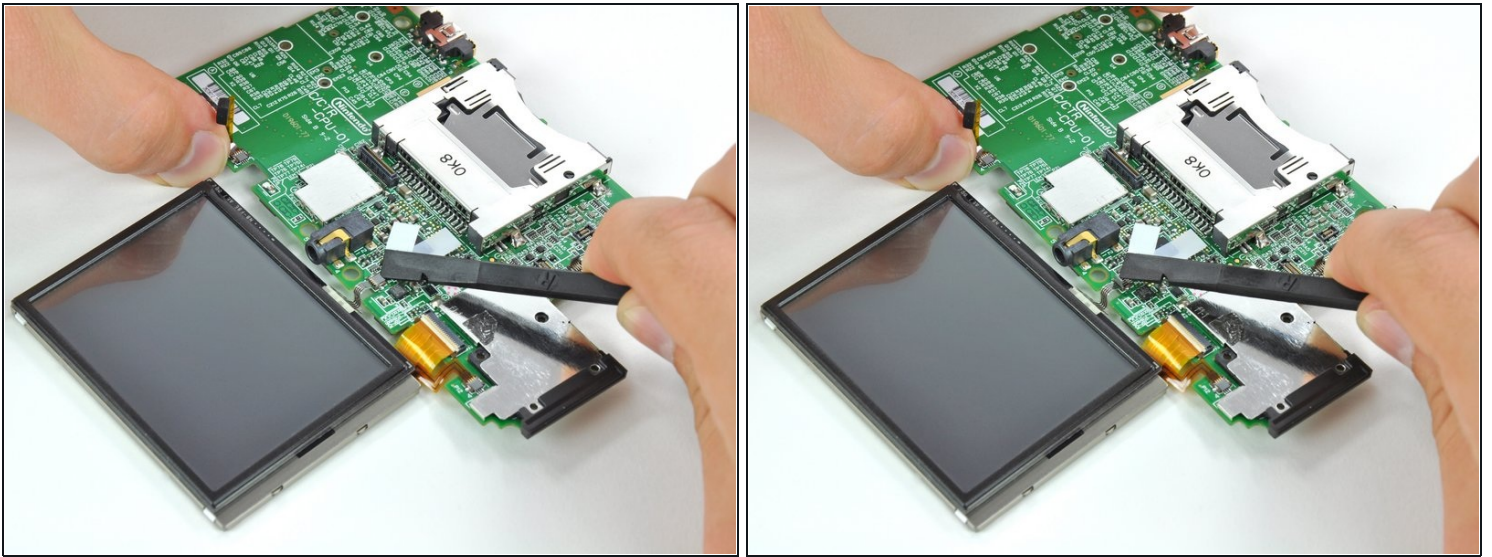
- Remove the motherboard assembly from the rest of the device.

Step 21 — Lower Display Assembly



- ① Set the motherboard assembly down so that the lower LCD is side-by-side with the motherboard.
- Use the tip of a spudger or your fingers to peel back the white tape covering the touchscreen ribbon cable connector.

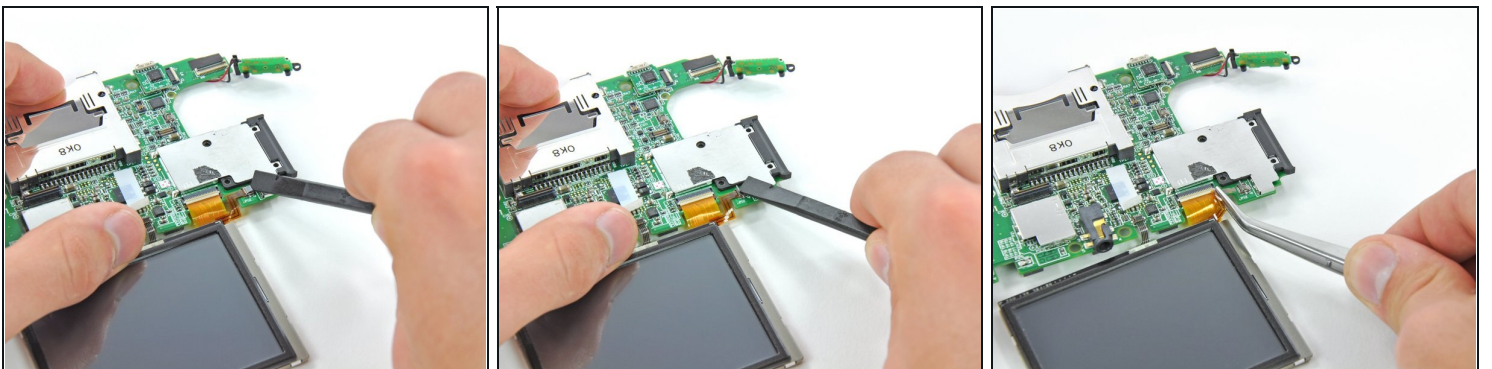
Step 22



- Use the flat end of a spudger or your fingernail to flip up the retaining flap on the touchscreen ribbon cable ZIF socket.

⚠ Be sure you are prying up on the hinged retaining flap, **not** the socket itself.

Step 23



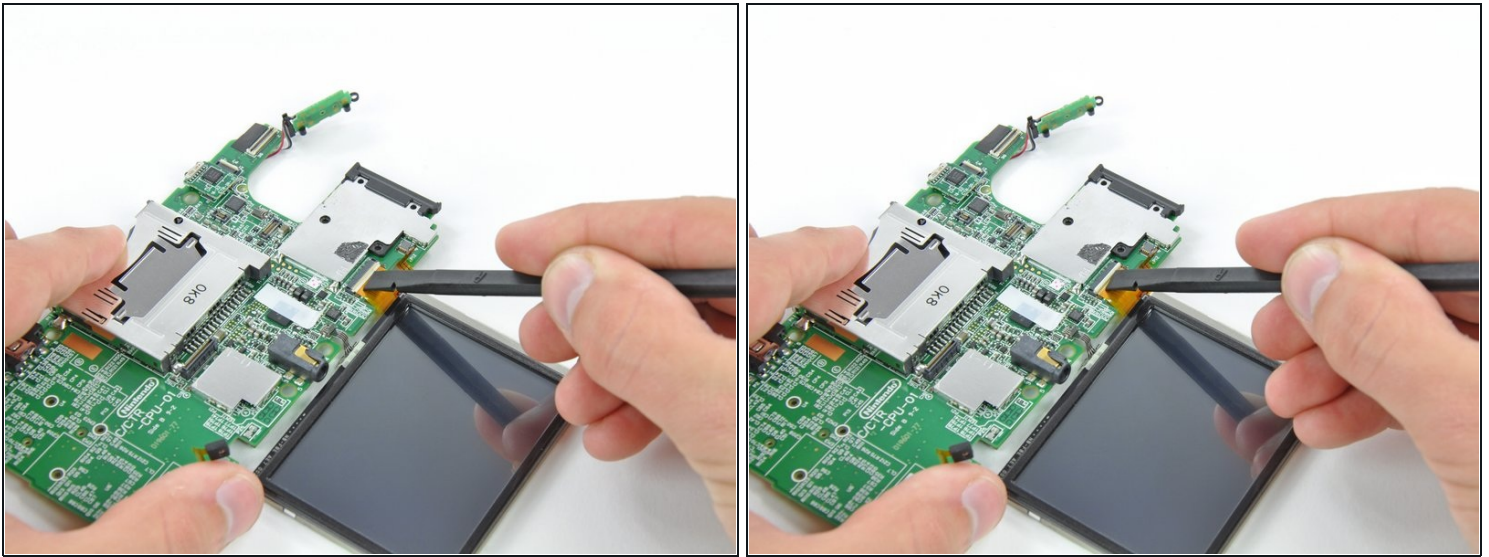
- Use the flat end of a spudger or your fingernail to flip up the retaining flap on the lower LCD power ribbon cable ZIF socket.

⚠ Be sure you are prying up on the hinged retaining flap, **not** the socket itself.

- Pull the ribbon cable out of the connector with a pair of tweezers.

⚠ Grasp the ribbon cable as close to the connector as possible with the tweezers to avoid tearing it.

Step 24



- Use the flat end of a spudger or your fingernail to flip up the retaining flap on the lower LCD data ribbon cable ZIF socket.

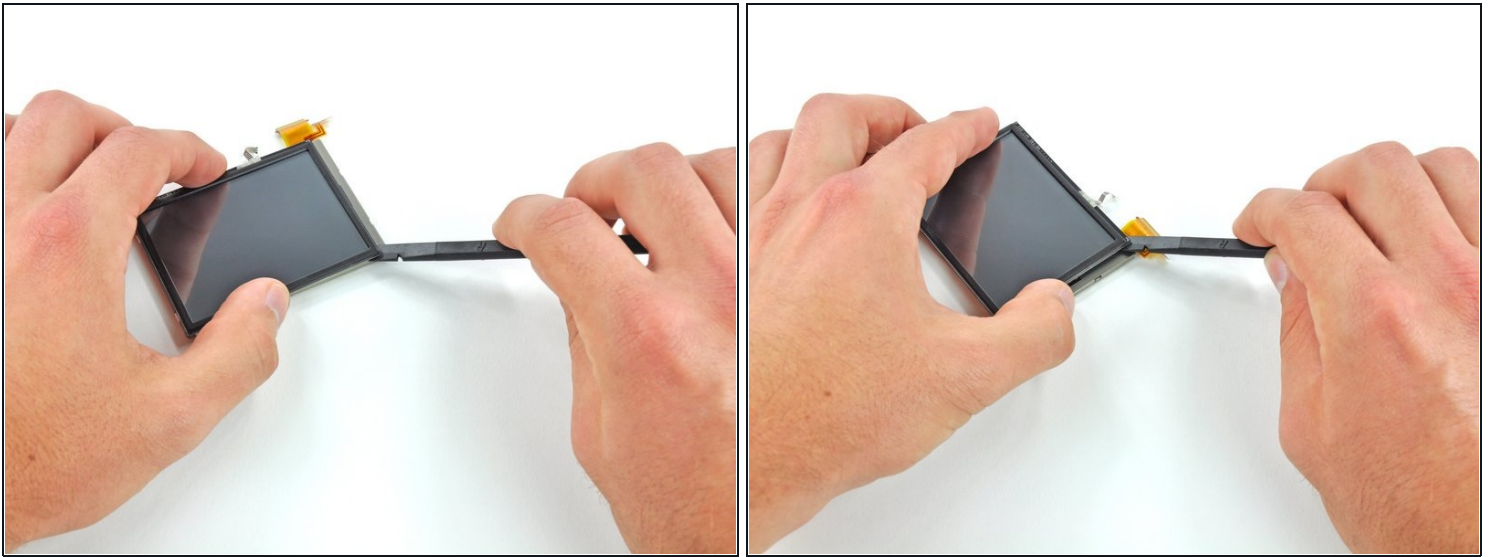
⚠ Be sure you are prying up on the hinged retaining flap, **not** the socket itself.

Step 25



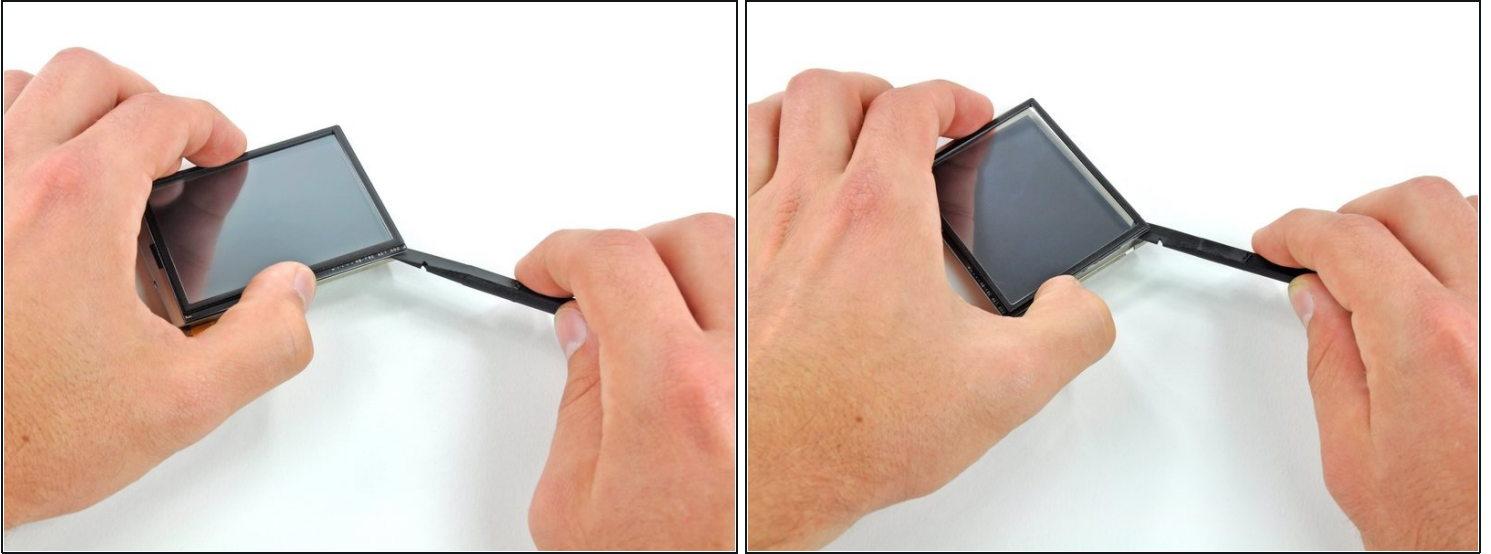
- Grasp the lower display assembly and pull it directly away from the motherboard.

Step 26 — Touchscreen



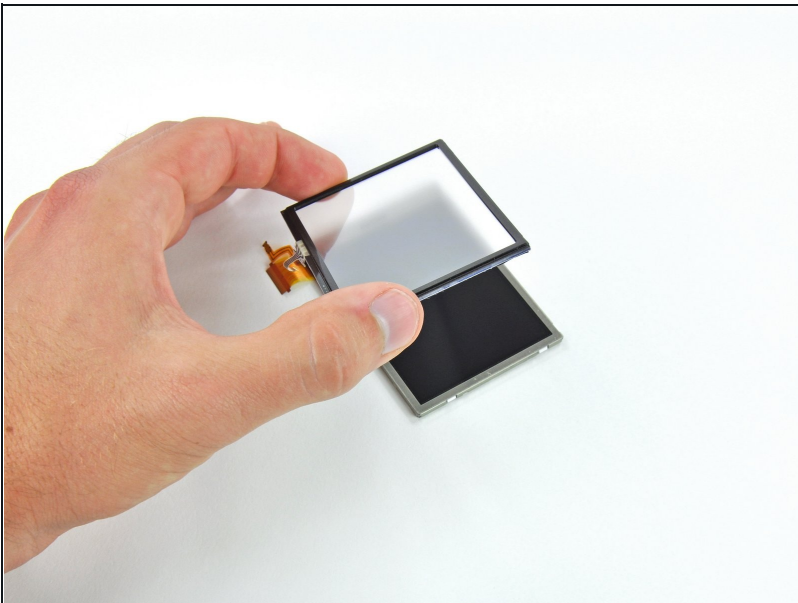
- Starting at the bottom right corner, insert the flat end of a spudger between the touchscreen and LCD frame and gently pry the touchscreen off the LCD.
- ⚠ Do not run the spudger down the side of the display assembly to loosen the touchscreen. The two components of the display assembly are held together by a fairly weak adhesive tape, and running the spudger between the two could tangle or damage the tape.
- Insert the spudger into the top right corner between the two pieces and pry the touchscreen off the LCD frame.

Step 27



- Repeat the above procedure for the remaining two corners to pry the touchscreen off the LCD frame.

Step 28



- Gently lift the touchscreen up to completely separate it from the lower LCD.

Step 29 — Lower LCD



- The lower LCD remains.

To reassemble your device, follow these instructions in reverse order.