



ATT CL2940 Back Panel Replacement

This is a prerequisite guide to replacing the...

Written By: Charles Messmore



INTRODUCTION

This is a prerequisite guide to replacing the components in an ATT CL2490 phone. In order to get to these components, the back panel must be removed. This guide shows how to remove the back panel safely and effectively.

TOOLS:

[Metal Spudger Set](#) (1)

[Pro Tech Toolkit](#) (1)

Step 1 — Back Panel



- Remove five 9.5 mm Phillips #1 screws from the back panel of the phone.

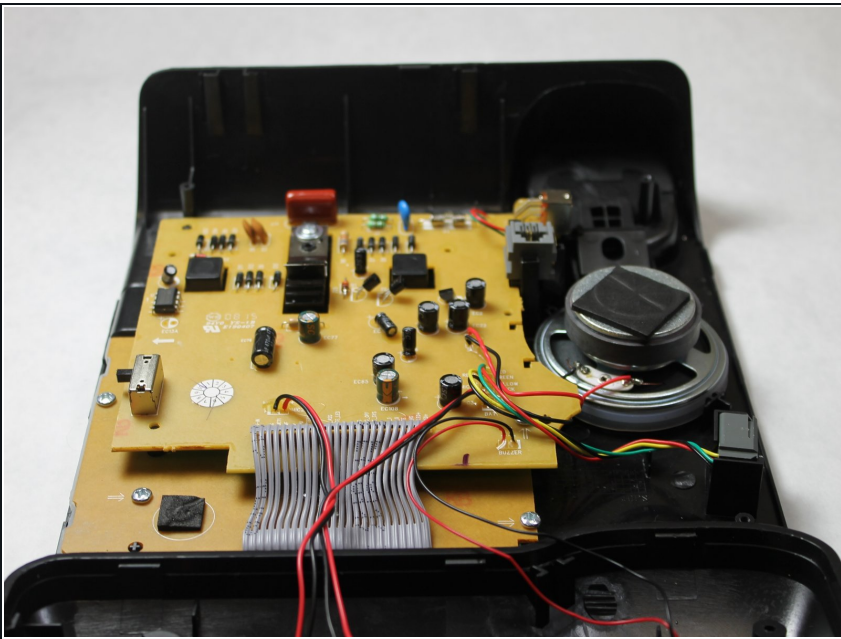
Step 2



- Slide the metal spudger into the crack and continue around to the front panel of the phone.

⚠ Be careful not to break the clips that hold the back panel to the front panel.

Step 3



⚠ When setting the back panel down, be careful to not rip any of the wires off of the internal components.

To reassemble your device, follow these instructions in reverse order.