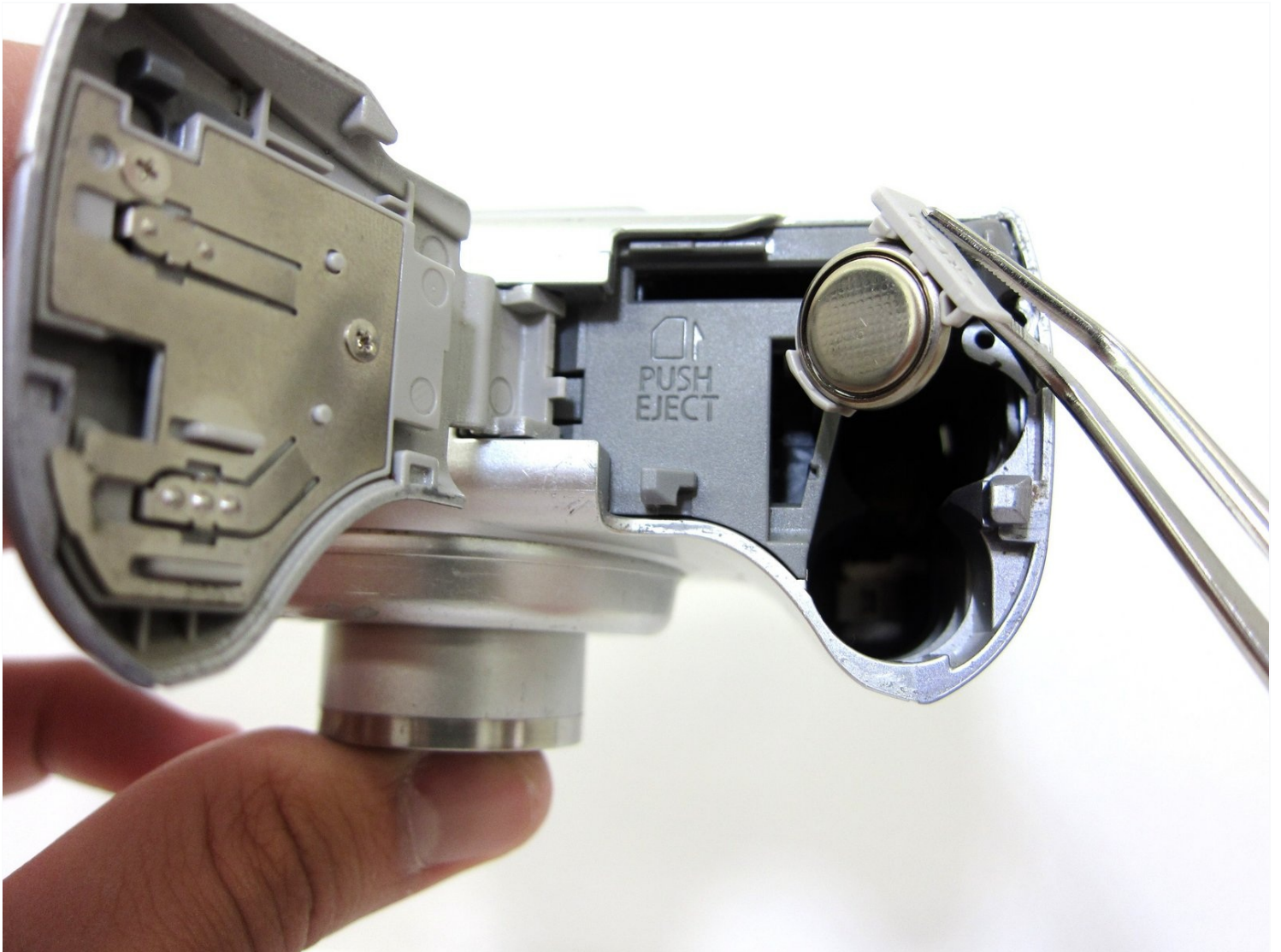




# Canon PowerShot A550 Internal Battery Replacement

The internal battery is vital for powering your...

Written By: Precilla Tang



# INTRODUCTION

The internal battery is vital for powering your Canon Powershot A550. This guide will show you how to remove and replace your internal battery so that your camera may function properly with a new power supply.

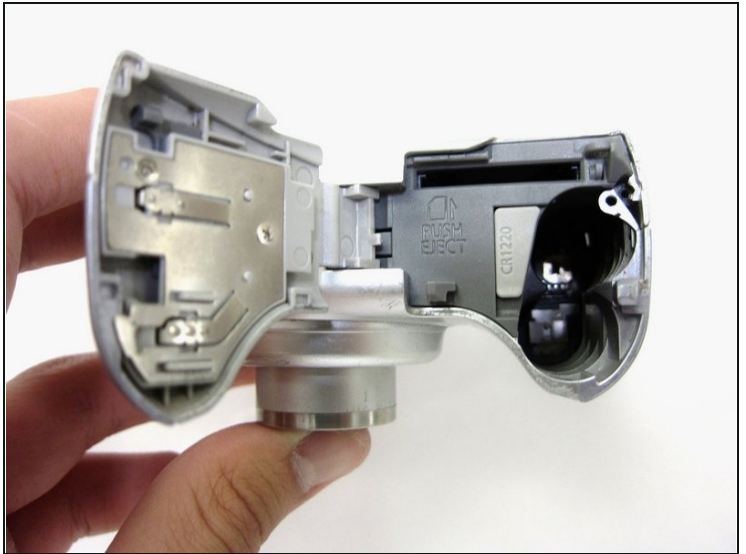
## TOOLS:

[Tweezers](#) (1)

## PARTS:

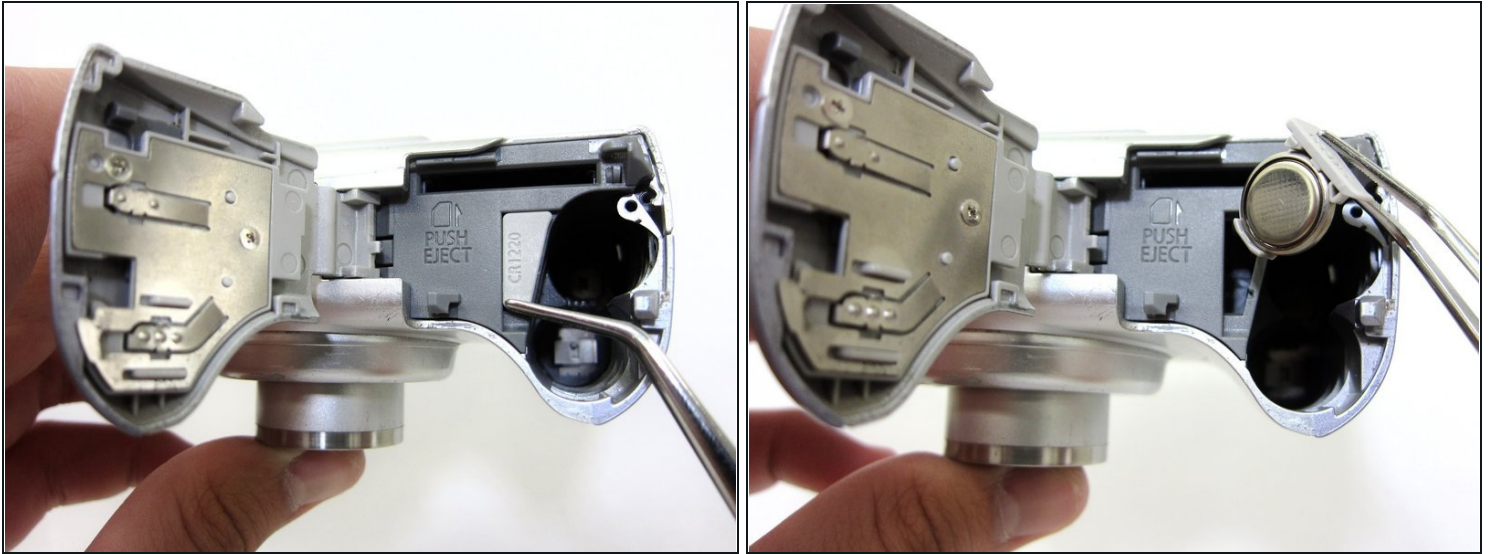
[CR 1220 Battery](#) (1)

### Step 1 — Internal Battery



- Open the compartment labeled CARD/BATT. located at the bottom of the camera by moving the dark gray button down and sliding the cover to the right.
- The opened compartment should look like this.

## Step 2



- Use tweezers to remove the internal battery by sliding it up and out of its compartment.
- The internal battery can now be replaced.

---

To reassemble your device, follow these instructions in reverse order.