



Sony Clie PEG-UX50 Tilt Screen Replacement

This guide shows how to remove the tilt screen on a Sony Clie PEG-UX50.

Written By: Rishad R Rai



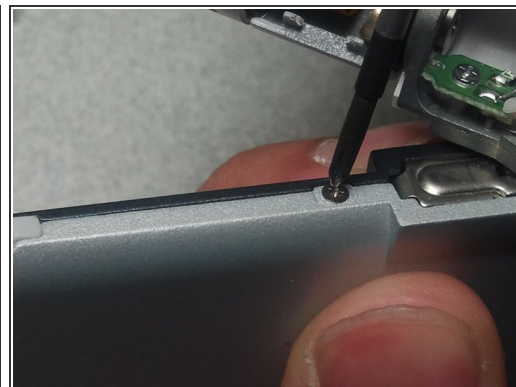
INTRODUCTION

The Sony Clie PEG-UX50 has a separate tilt screen display. This guide will show you how to remove the tilt screen without dismantling the battery plate.

TOOLS:

- [Phillips #1 Screwdriver](#) (1)
-

Step 1 — Tilt Screen



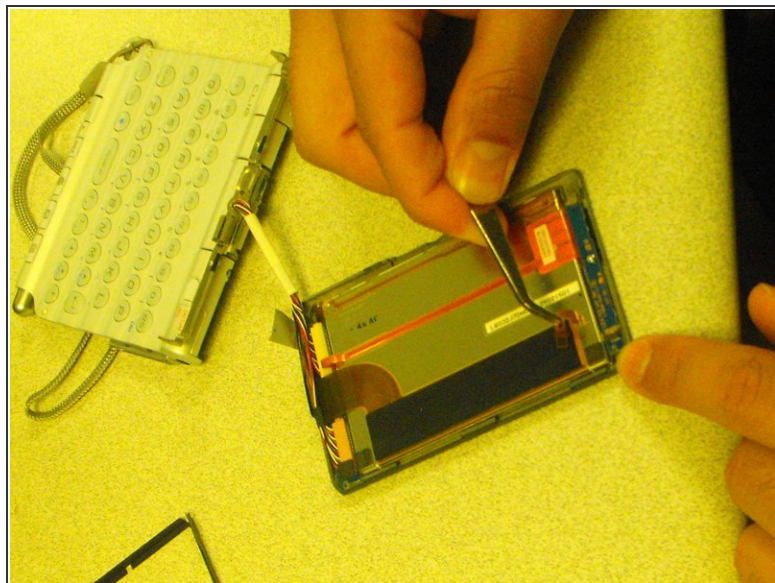
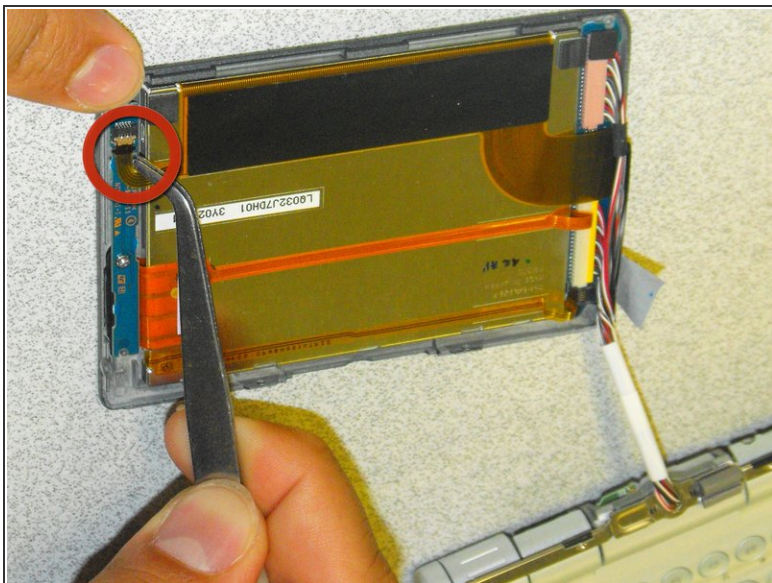
- Take off the screws located on the two sides of the tilt screen.
- Unscrew the screw located at the tilt base of the screen.

Step 2



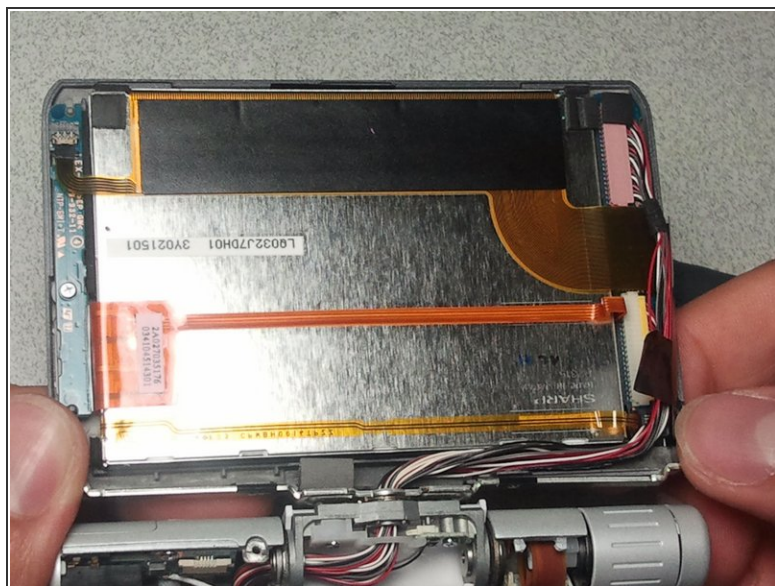
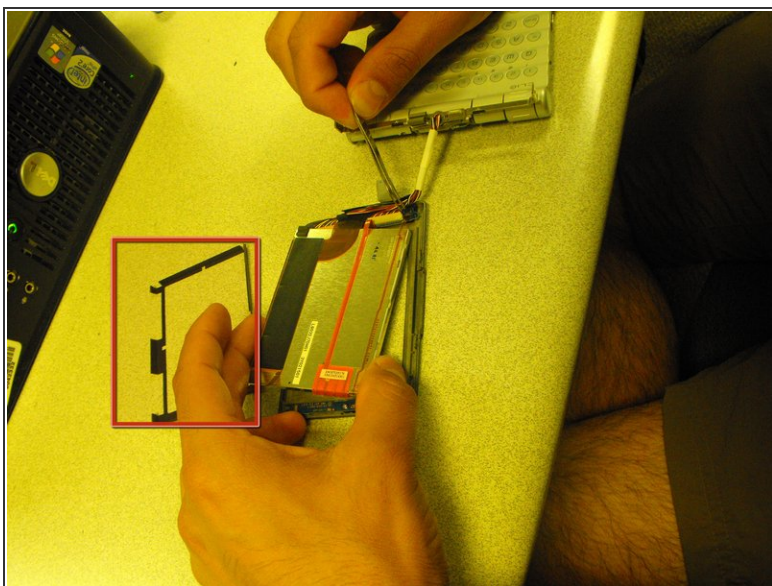
- Gently remove the back plate of the tilt screen by sliding it upward.
- ⚠ With caution, lift the wires from the track in the back plate.

Step 3



- Disconnect the thin USB cable attached to the Integrated Circuit.

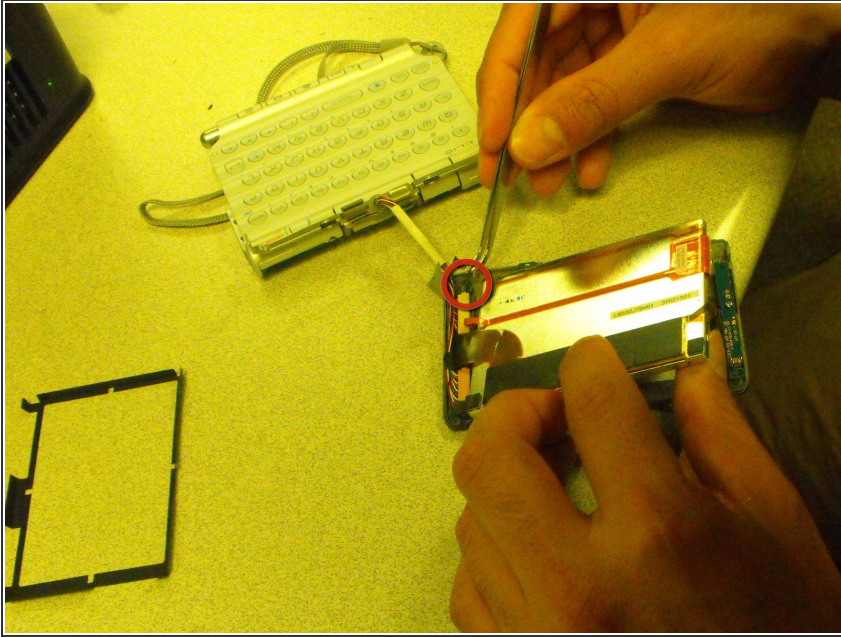
Step 4



- Detach the plastic black frame from in between the plate and the LCD.

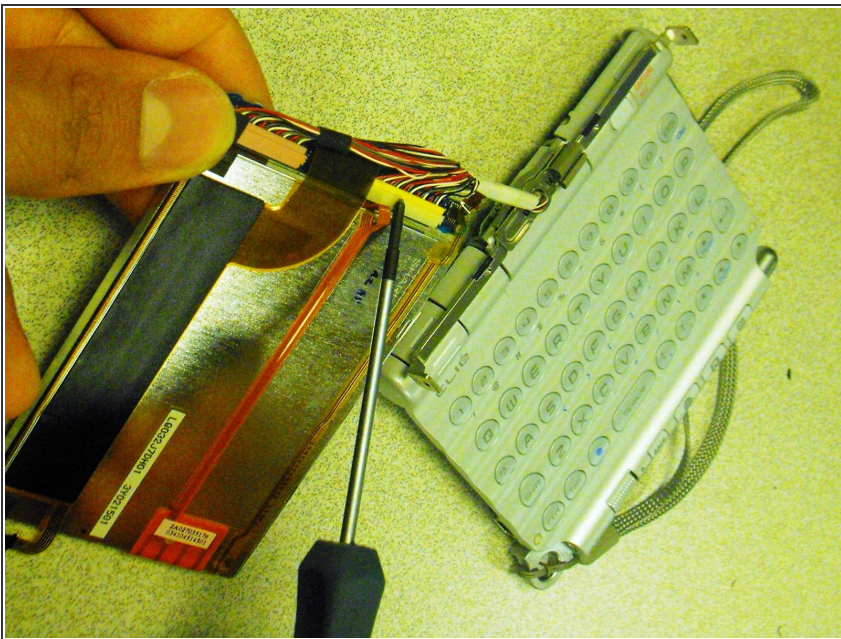
⚠ Do not disconnect the display from the board yet.

Step 5



- Disconnect the thin connector from the face plate using tweezers.

Step 6



- Quickly release and disconnect the thick cable with your hands.

Follow these instructions in reverse order to reassemble your device.