



# LG Spectrum Motherboard Replacement

Replacing the Motherboard on the LG Spectrum can fix core software issues with the phone.

Written By: Aiman Sallam



# INTRODUCTION

If you are having issues with your motherboard, such as the blue screen of death, constant errors, or crashes you may need to replace the motherboard. This guide will take you through the necessary steps to replace the Motherboard.



## TOOLS:

- [Phillips #000 Screwdriver](#) (1)
  - [iFixit Opening Tools](#) (1)
-

## Step 1 — Battery



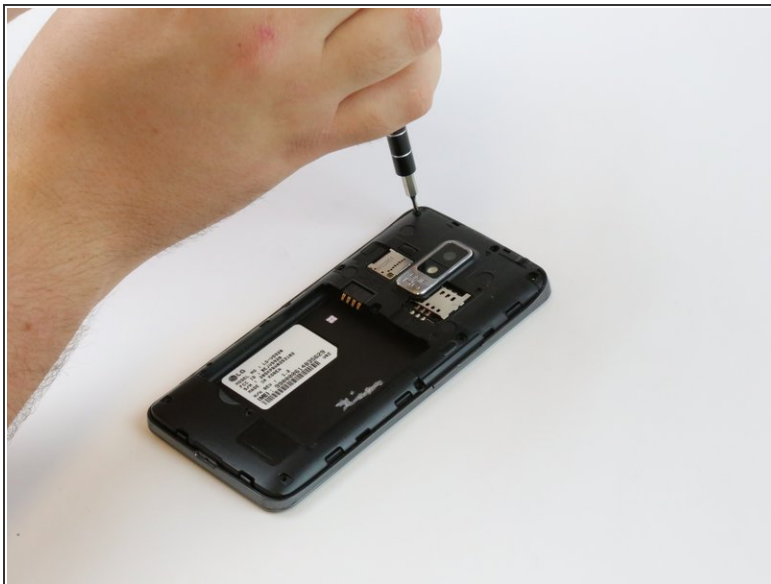
- Using your thumbnail, lift up on the notch in the middle of the bottom side of the phone.

## Step 2




- Using either your thumbnail or a plastic opening tool, lift up on the battery using the notch in the bottom left hand corner of the battery and remove it from the phone.

## Step 3 — Sim/SD Port



- Remove eleven 4mm Phillips #000 screws with a PH000 screwdriver.

-  Use the magnetic mat to keep the screws in one place.

## Step 4



- Use the plastic opening tool to firmly pry up the plastic backing around the perimeter of the phone.

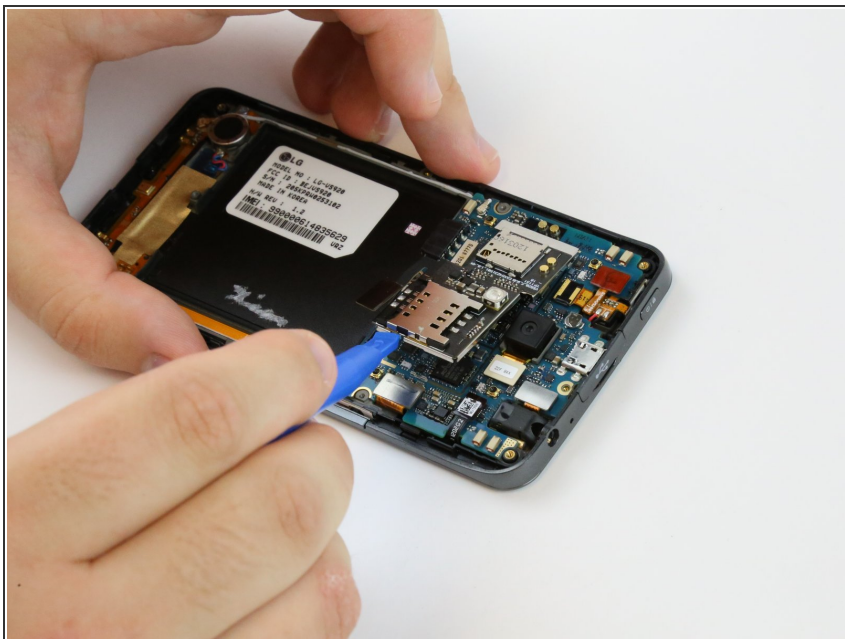
## Step 5



- Detach the black rectangular film attached to the SIM/SD card plate with a plastic opening tool.



## Step 6



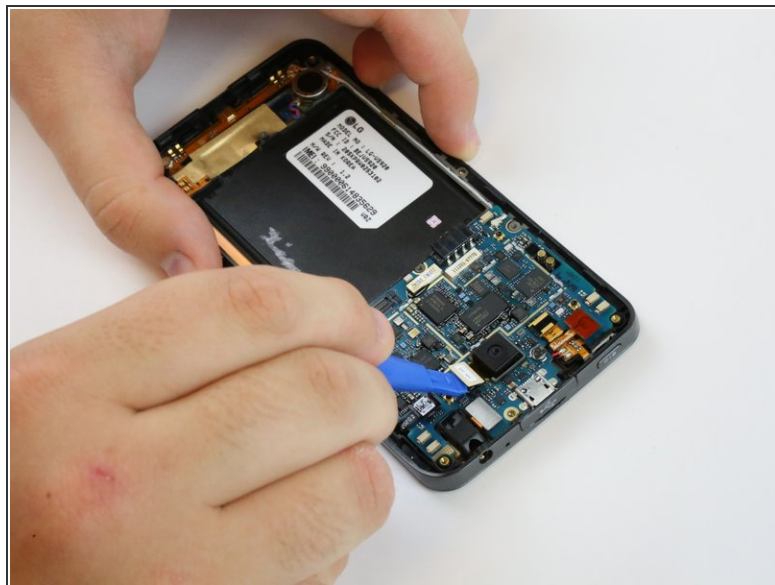
- Hook the plastic opening tool underneath the plate and gently lift it up.

## Step 7



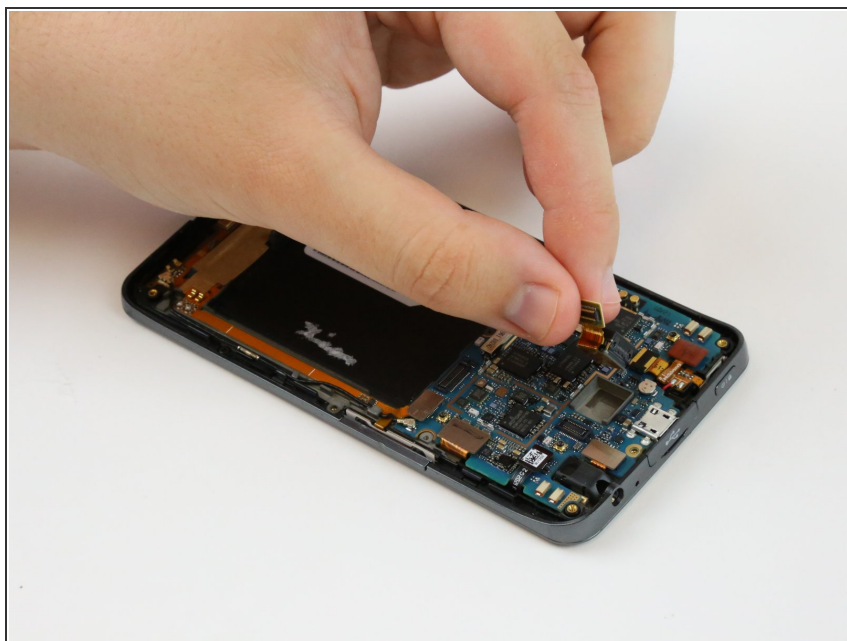
- Gently wiggle the plate side-to-side while pulling up to release it from the metal clamps holding it in.

## Step 8 — Motherboard



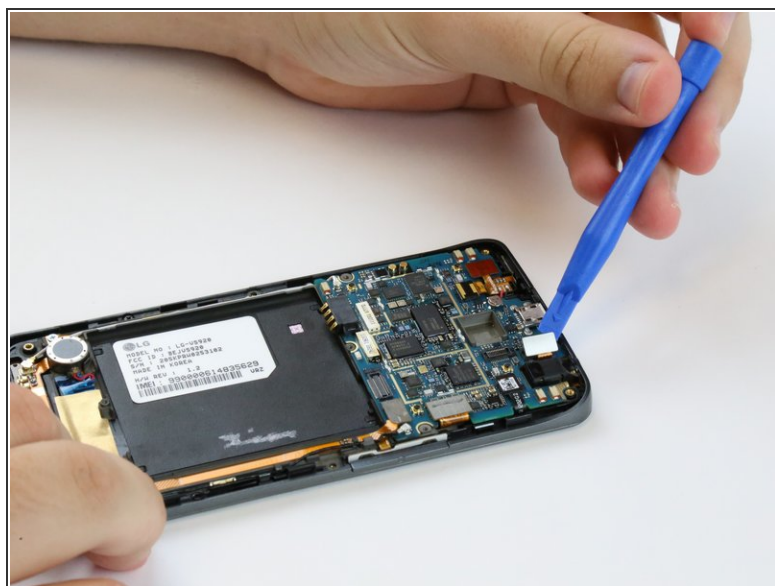
- Use the plastic opening tool to lift up the connector that holds the camera to the board.

## Step 9



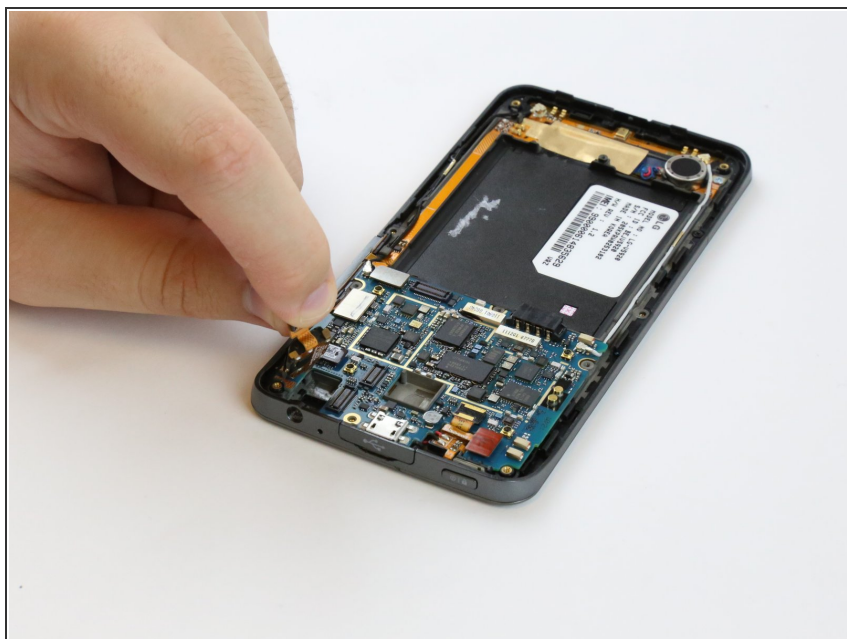
- Pull the camera gently out of its housing in the motherboard with your fingers.

## Step 10



- Using the plastic opening tool, gently pry up the audio port connector.

## Step 11



- Remove the audio port from the motherboard with either your hand or the plastic opening tool.



## Step 12



- Detach the two cable connector wires from the motherboard with the plastic opening tool.
- Detach the remaining five connectors from the phone with the plastic opening tool.

## Step 13



- Hook the plastic opening tool underneath the motherboard and firmly lift it out of the phone casing.

To reassemble your device, follow these instructions in reverse order.