



Microsoft Lumia 435 Touch screen Glass Only Replacement

Microsoft Lumia 435 Touch screen Glass Only Replacement

Written By: ZFix



INTRODUCTION

Lumia 435 RM1068, RM-1069, RM1070, RM-1071

Lumia 532 RM-1032, RM1034

How to disassemble Lumia 435, Lumia 532 and replace the broken touch screen glass.

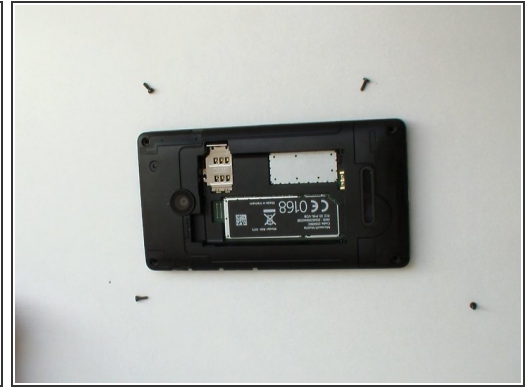
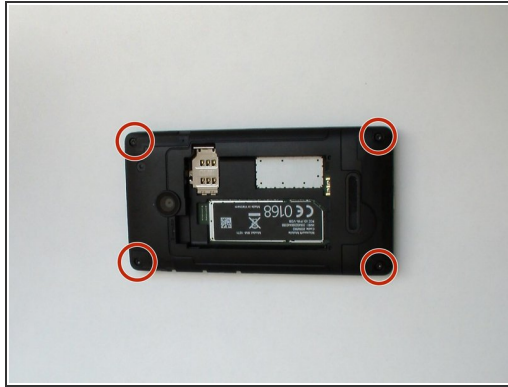
[video: <https://www.youtube.com/watch?v=TfA3Yqr-l0s>]



TOOLS:

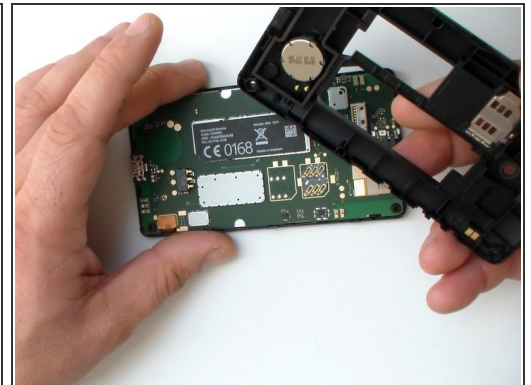
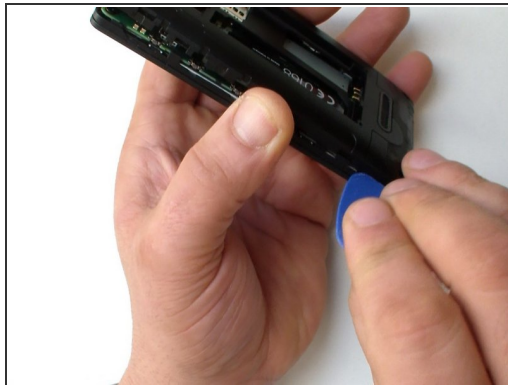
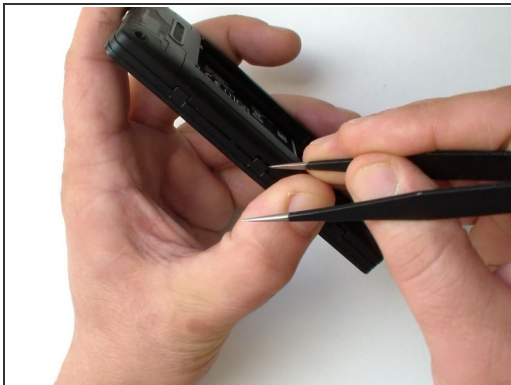
- [Heat Gun](#) (1)
 - [iFixit Opening Picks set of 6](#) (1)
 - [T6 Torx Screwdriver](#) (1)
 - [Tweezers](#) (1)
-

Step 1 — Back Cover



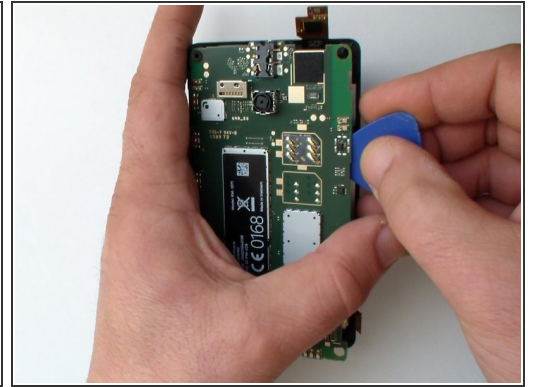
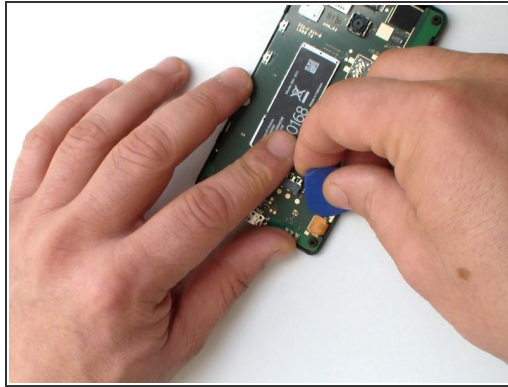
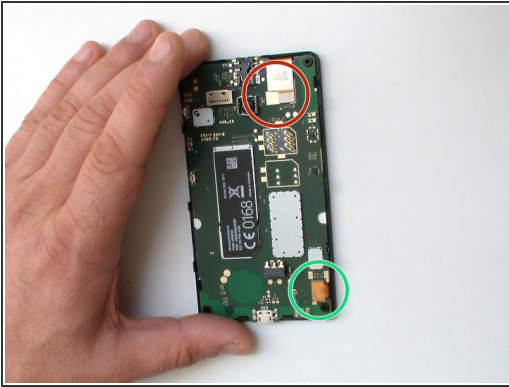
- Switch off the phone.
- Remove the battery and any inserted SIM and memory cards.
- Use a screwdriver Torx T6 and remove the 4x black screws.

Step 2



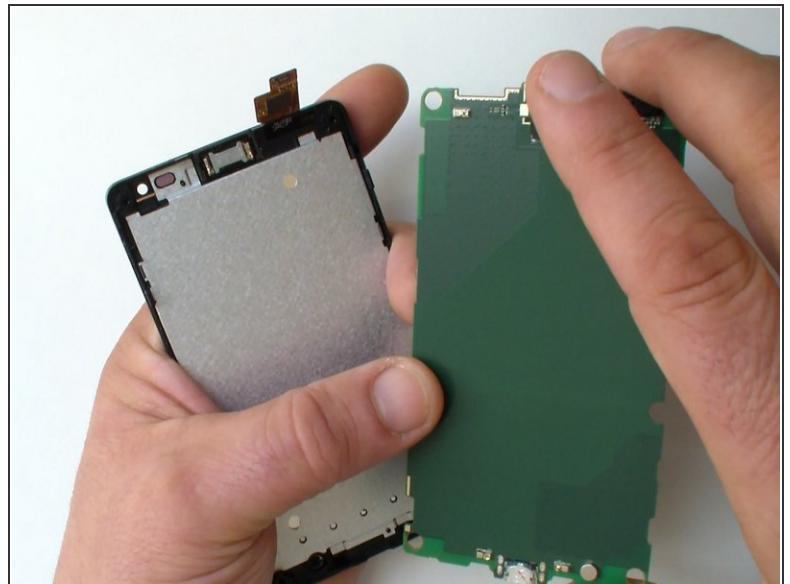
- There are several plastic locking clips hold the back cover to the frame.
- Use a tool with a sharp edge to unlock them and a plastic tool to separate the back cover.

Step 3 — Logic board



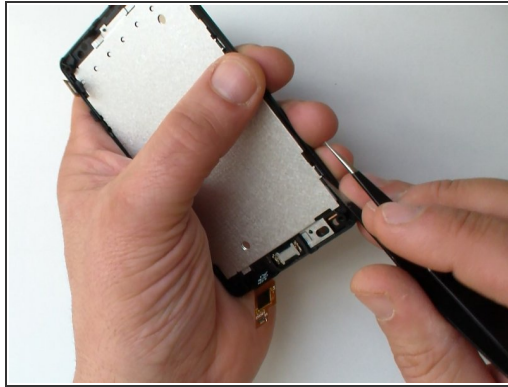
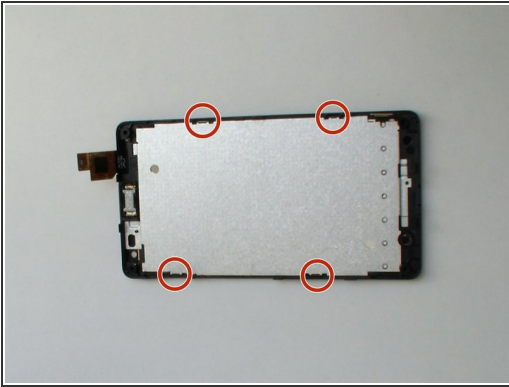
- Unhook:
 - the touch screen flex cable
 - the LCD Display flex cable
- Use a plastic tool lift up and remove the Logic board.

Step 4



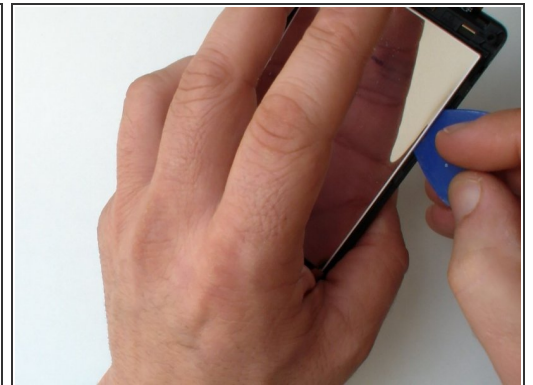
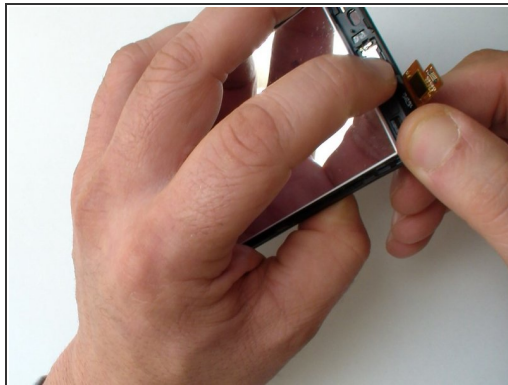
- This is the logic board / main board - a front and rear view.

Step 5 — LCD Display



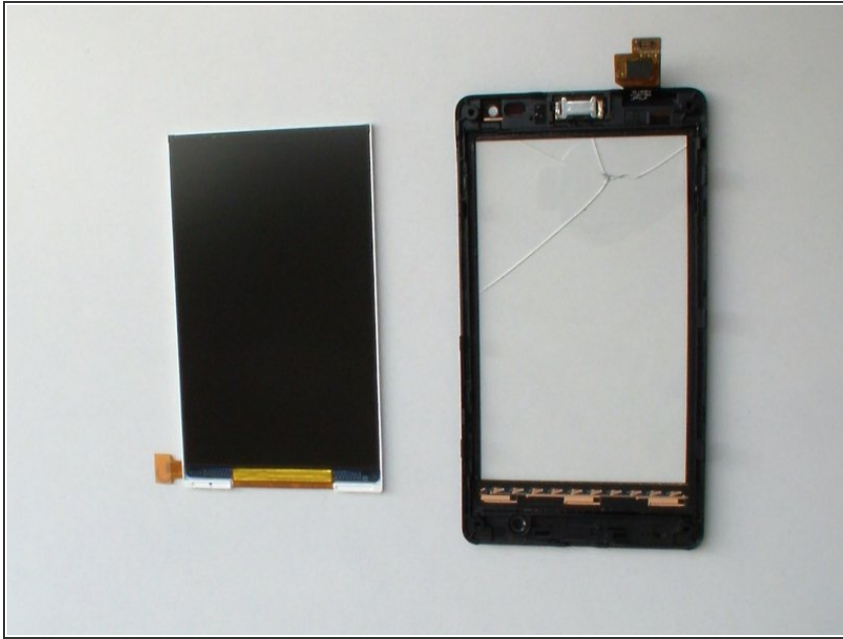
- The Display metal shield is locked to the frame by 4x locking clips.
- Use a tool with a sharp tip and carefully unlock them and remove the shield.

Step 6



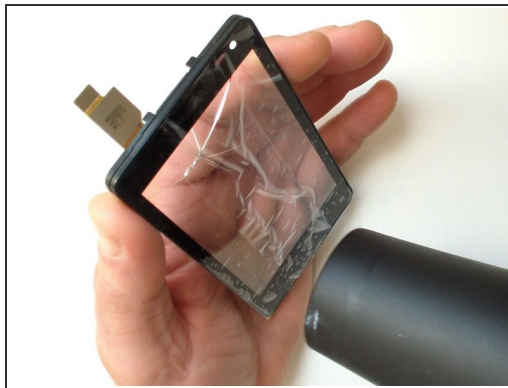
- The display is stuck to the touch screen glass with a double-sided adhesive tape.
- Use a hair dryer or hot air gun and warm the glass to make the adhesive softer.
- ⚠ Distort the frame a little and use a thin plastic tool to separate the display from the frame.

Step 7



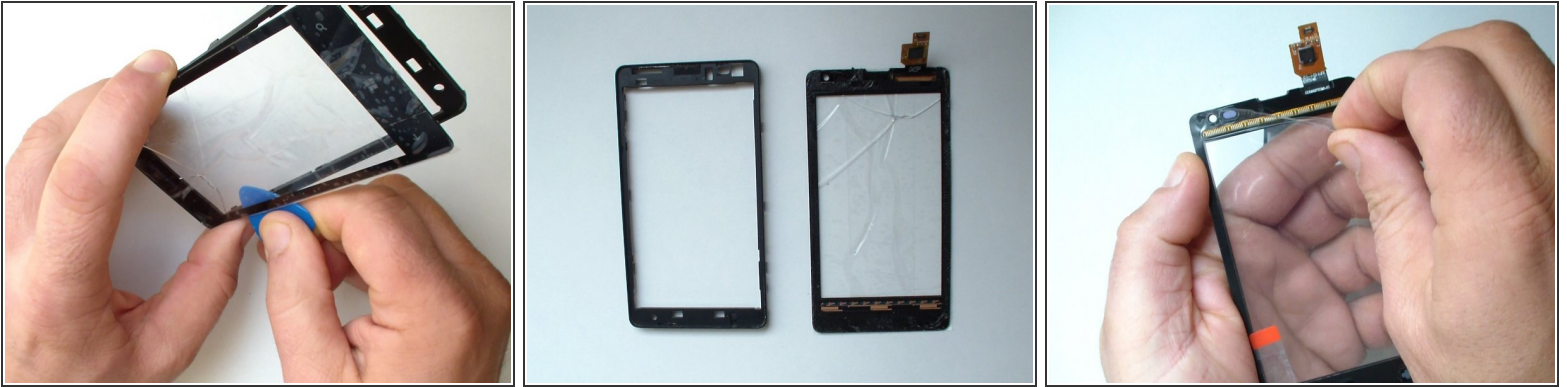
- The display is very fragile, do the separation very carefully.

Step 8 — Touch screen Glass Only



- Put some transparent scotch tape to prevent the glass from shattering.
- Warm the glass for a minute to make adhesive soften.
- Start the separation from the middle of the frame, where the contact area is smaller.

Step 9



- When you finished with the separation the glass, clean the frame from the old adhesive.
- Install the new touch screen and start to reassemble the device.

Step 10



- **That's all.**

To reassemble your device, follow these instructions in reverse order.