



Motorola Droid Turbo SIM Card Tray/Volume Button Rocker Replacement

Replace the SIM card tray/volume button rocker on your Motorola Droid Turbo.

Written By: Luis Arangu



INTRODUCTION

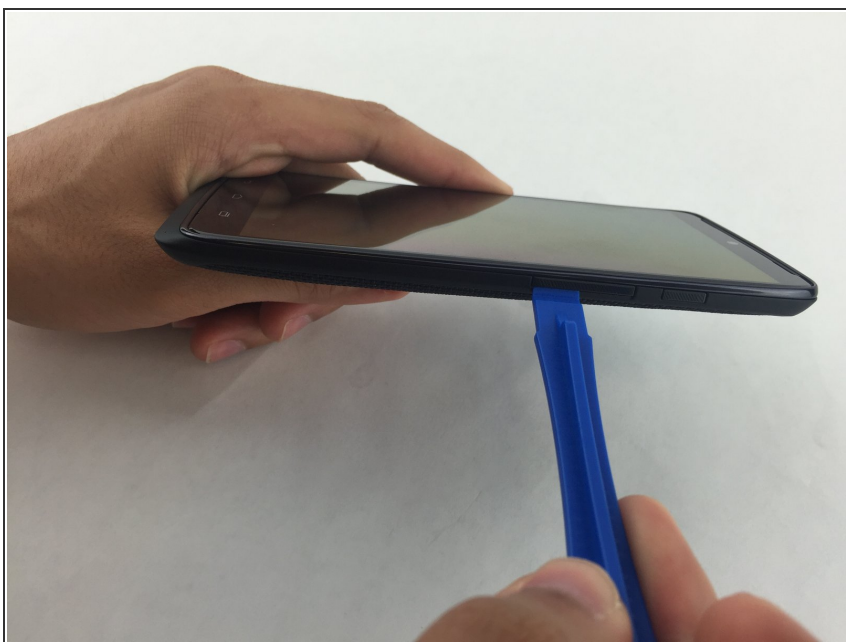
Use this guide to replace the SIM card tray/volume button rocker on your Motorola Droid Turbo.



TOOLS:

- [iFixit Opening Tools](#) (1)
-

Step 1 — SIM Card Tray/Volume Button Rocker



- Remove the sim card frame from the port with a plastic opening tool.
- ⓘ The sim card port is located on the right side of your device.

Step 2



- Pull inlet toward you to remove it. As you see, it comes out completely.

To reassemble your device, follow these instructions in reverse order.