



Panasonic Lumix DMC-FZ1000 Disassembly

Completely disassemble your Panasonic Lumix DMC-FZ1000.

Written By: Robseth Taas



INTRODUCTION

In this long guide you will completely disassemble your FZ1000, excluding the lens which is manufactured by Leica, not Panasonic. You will need to unscrew many screws, detach numerous electronic ZIF connector ribbons, and pry open a few components in order to disassemble your camera. Be extra cautious when moving any electronic ribbons, since they tear very easily. See [this technique on disconnecting ZIF connectors](#) to better learn how to detach a ZIF connector ribbon.

In several steps of this guide, the state of the camera in the accompanying visual or visuals will not correspond to the state of your camera. The visuals differ from your camera in the following ways:

- Electronic ribbons will appear torn and taped. Your camera's electronic ribbons should not be torn.
- Black tape will appear crinkled due to prior removal. Your camera's black tape should not appear to have been previously removed.
- The MIC jack plug will appear snapped. Your plug should not be broken.



TOOLS:

- [Phillips #00 Screwdriver](#) (1)
 - [iFixit Opening Tool](#) (1)
 - [Spudger](#) (1)
 - [Tweezers](#) (1)
 - [T5 Torx Screwdriver](#) (1)
 - [Phillips #000 Screwdriver](#) (1)
-

Step 1 — Battery



- Slide the switch on the bottom of your camera from the right (LOCK) to the left (OPEN).

i The battery door will swing open.

Step 2



- Pull down on the lever that holds the battery.

i The battery will pop out of its casing.

Step 3



- Pull out the battery.

Step 4 — Screen



- Swing out the screen on the back of your camera by 90 degrees.
- Remove the two 2.2 mm Phillips #00 screws on the outside edge of the screen.

Step 5



- Rotate the screen clockwise by 90 degrees, so that the glass faces the viewfinder.
- Remove the 4.1 mm Phillips #00 screw on the inside edge of the screen.

Step 6



- Rotate the screen clockwise by another 180 degrees, so that the glass faces the bottom of the camera.
- Remove the second 4.1 mm Phillips #00 screw on the inside edge of the screen.

Step 7



⚠ In this step you will pry off the two sides of the screen's plastic casing. Do not yank off the side that holds the glass screen. If you do, you will tear the electronic ribbon attached to the screen and the screen axle.

- Use a plastic opening tool to pry open the plastic screen casing. It might be easiest to start prying near the screen mount, and then work your way around the casing.
- Hold on to the side that houses the glass screen. Set down the side that says LUMIX.

Step 8



⚠ Do not yank out the electronic ribbon attached to the screen and the screen mount, or you may damage it. To properly detach this ZIF connector ribbon, see [this technique on disconnecting ZIF connectors](#).

- Pull to disconnect from the screen the ZIF connector ribbon attached to the screen axle.
- Remove the screen and its casing from the screen axle.
- Pull out the screen from its plastic casing.

Step 9 — Motherboard



- Push in on the SD card inside the battery housing.
- ⓘ The SD card will pop out.
- Pull out the SD card.
- Close the battery housing door.

Step 10



- Remove the two 5.2 mm Phillips #00 screws that are 1) below the label and 2) above the tripod mount hole on the bottom of the camera.
 - ⓘ You may ignore the screw below the tripod mount hole.
- Remove the two 5.5 mm Phillips #00 screws on the side of the camera with the MIC jack.
- Remove the two 7.0 mm Phillips #00 screws that are 1) above and 2) below the HDMI panel.
 - ⓘ You may ignore the screw that goes through the leather material to the right of the HDMI panel.

Step 11



- There are two screws that hold the eye piece on to the main housing, just underneath. Remove these. Once these have been removed, gently pull and remove the eye piece and remove the now accessible top two screws.

Step 12



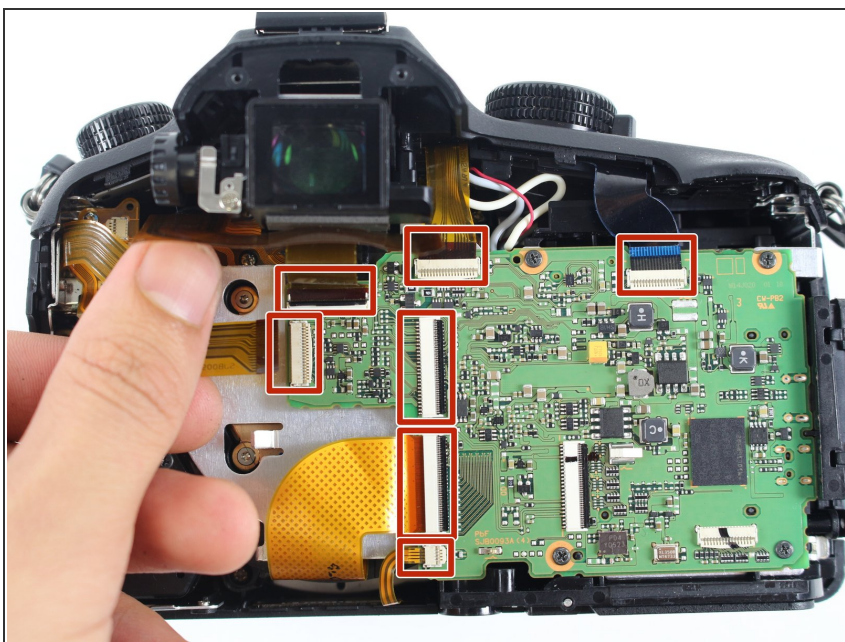
⚠ Do not yank off the back plate. If you do, you will tear the electronic ribbons attached to the inside of the camera and the back plate.

- Gently lift up the back plate, being careful not to damage any ribbons.

⚠ Do not yank out the electronic ribbons attached to the motherboard and the back plate, or you may damage them. To properly detach these ZIF connector ribbons, see [this technique on disconnecting ZIF connectors](#).

- Pull to disconnect from the motherboard the two ZIF connector ribbons attached to the back plate.
- Set aside the back plate.

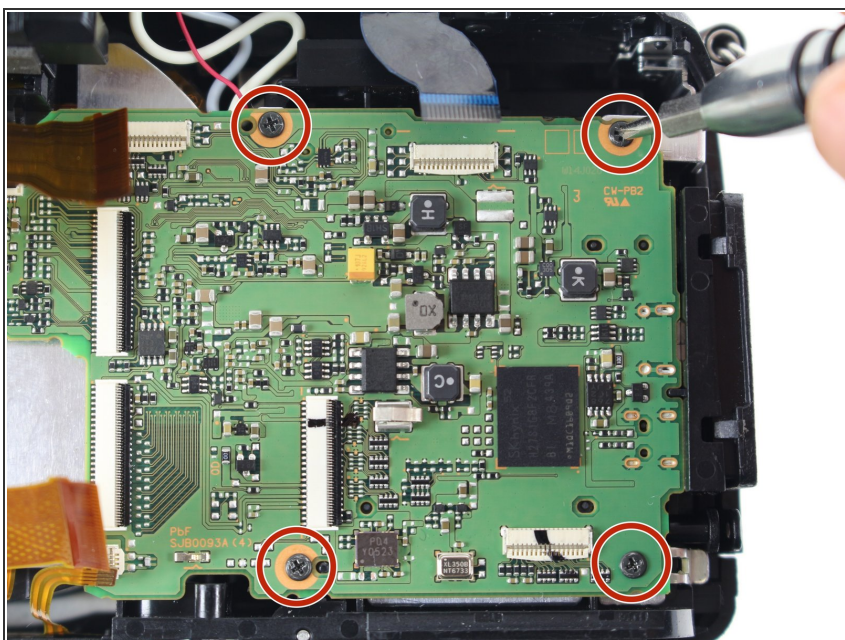
Step 13



⚠ Do not yank out the electronic ribbons attached to the motherboard, or you may damage them. To properly detach these ZIF connector ribbons, see [this technique on disconnecting ZIF connectors](#).

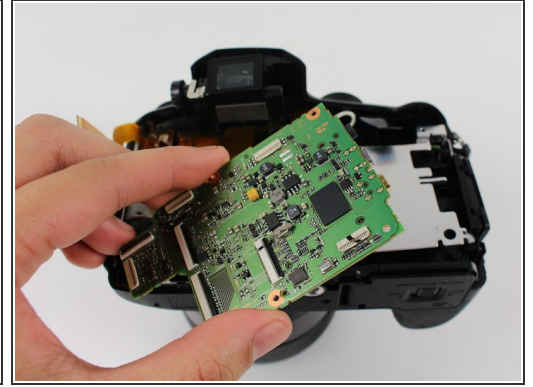
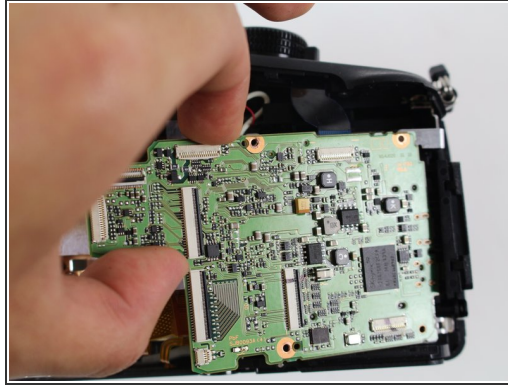
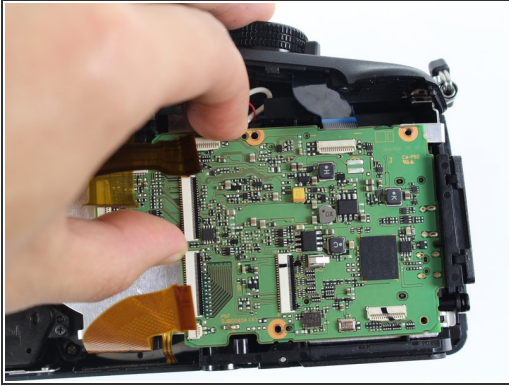
- Pull to disconnect from the motherboard the seven ZIF connector ribbons.

Step 14



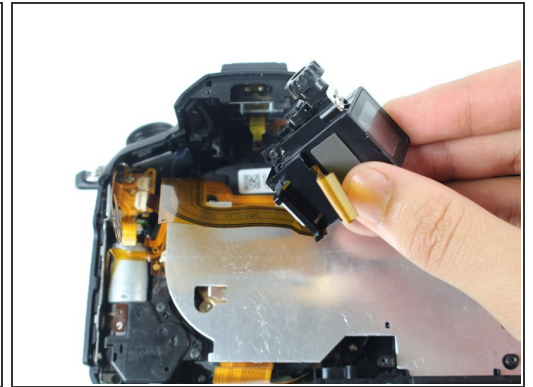
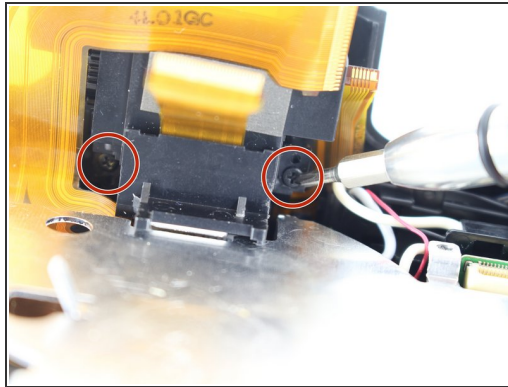
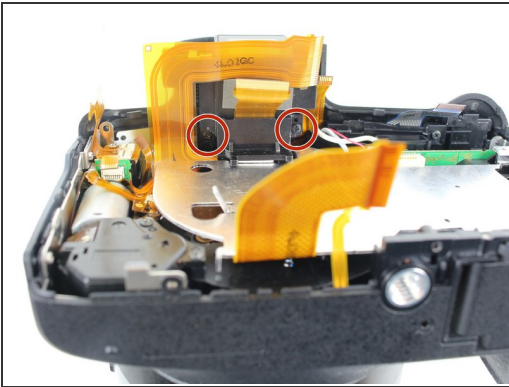
- Remove the four 5.2 mm Phillips #00 screws at the corners of the motherboard.

Step 15



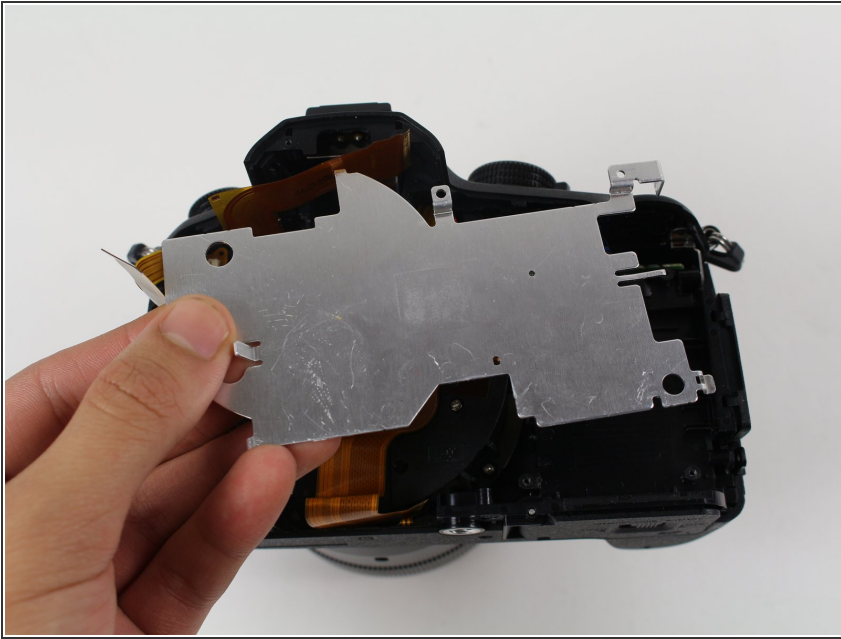
- Firmly grasp the left side of the motherboard.
 - Pull out the motherboard.
- i** If you find it difficult to remove the motherboard, pull it away from the HDMI panel while pulling it out.

Step 16 — Lens



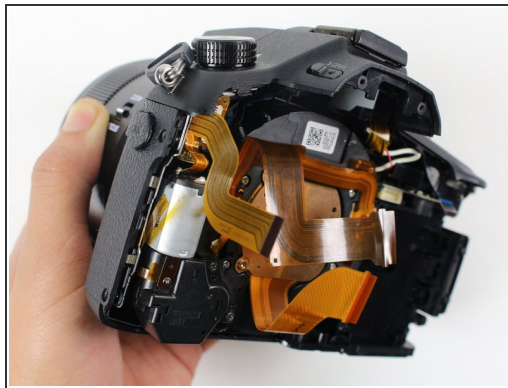
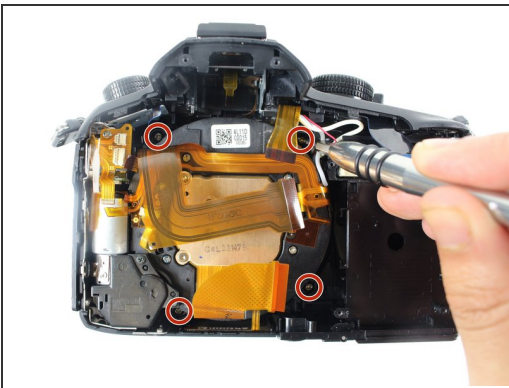
- Remove the two 7.0 mm Phillips #00 screws on the underside of the viewfinder.
- Pull out the viewfinder.

Step 17



- Pull out the silver metal plate.

Step 18



- Remove the four 9.0 mm Phillips #00 screws at the four corners of the lens.
- Push up on the lens from the front/outside of the camera to remove it.

Step 19



⚠ In this step you will remove tape stuck to the top of several electronic ribbons. Be extremely careful when removing the tape, since the ribbons tear very easily.

- Very carefully use tweezers to peel off the black tape between the lens and the metal cylinder.
- Very carefully use tweezers to peel off the black tape on the right side of the lens.

Step 20



⚠ In this step you will tug on thin electronic ribbons with tweezers. Be extremely careful when pulling the ribbons, since they tear very easily. To properly detach these ZIF connector ribbons, see [this technique on disconnecting ZIF connectors](#).

- Using tweezers, very carefully pull to disconnect the ZIF connector ribbon between the lens and the metal cylinder.
- Using tweezers, very carefully pull to disconnect the ZIF connector ribbon on the side of the lens.

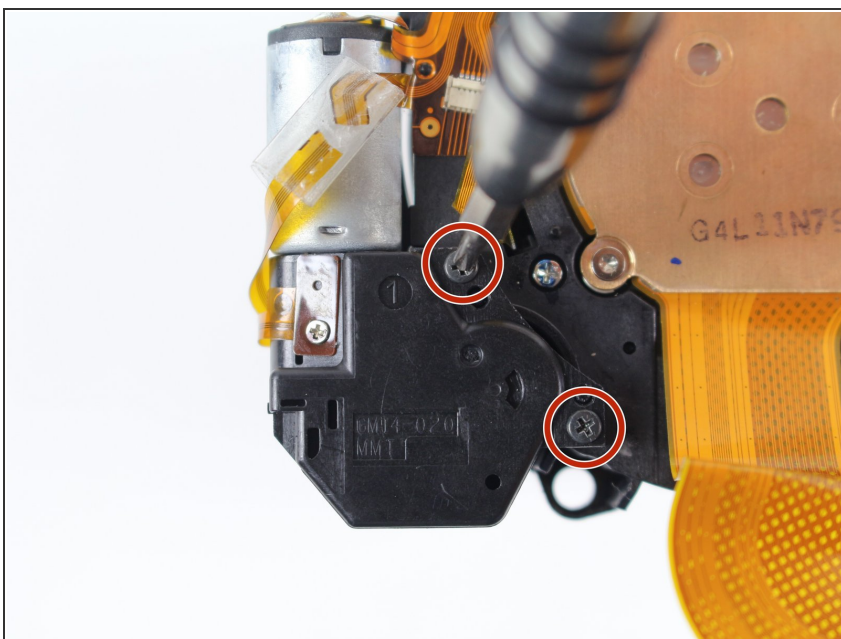
Step 21



⚠ In this step you will unhook an electronic ribbon. Be careful when moving the ribbon, since it tears easily.

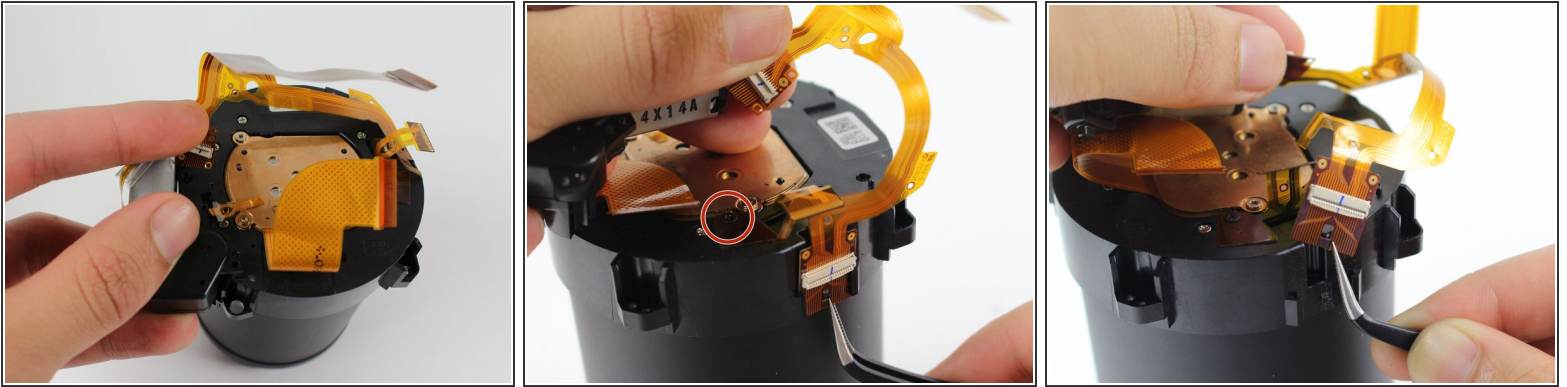
- Use tweezers to unhook from its three pegs the electronic ribbon between the lens and the metal cylinder.

Step 22



- Remove the two 5.0 mm Phillips #00 screws near the lens on top of the aperture motor.

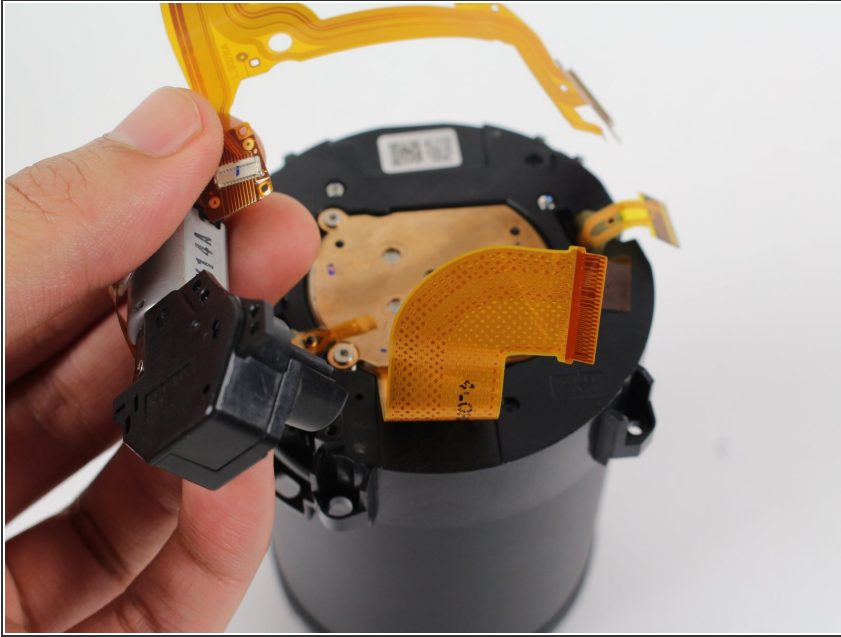
Step 23



⚠ In this step you will move an electronic ribbon. Be careful when working with any piece of the ribbon, since it tears easily.

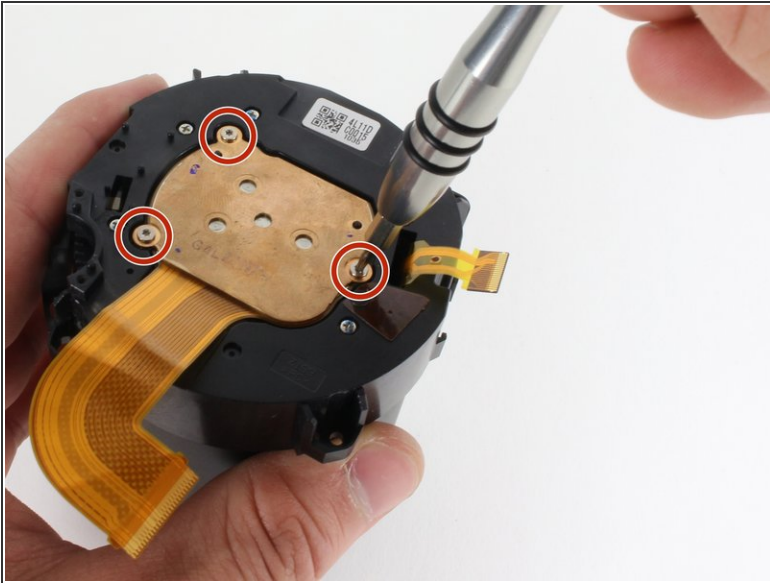
- Carefully unhook the aperture motor from its two pegs and slowly move it towards the opposite side of the lens.
- You may need to remove the Phillips screw that holds a trapezoid-shaped piece of the electronic ribbon.
- While holding on to the aperture motor, very carefully use tweezers to unclip the electronic ribbon on the side of the lens.

Step 24



- Set aside the aperture motor.

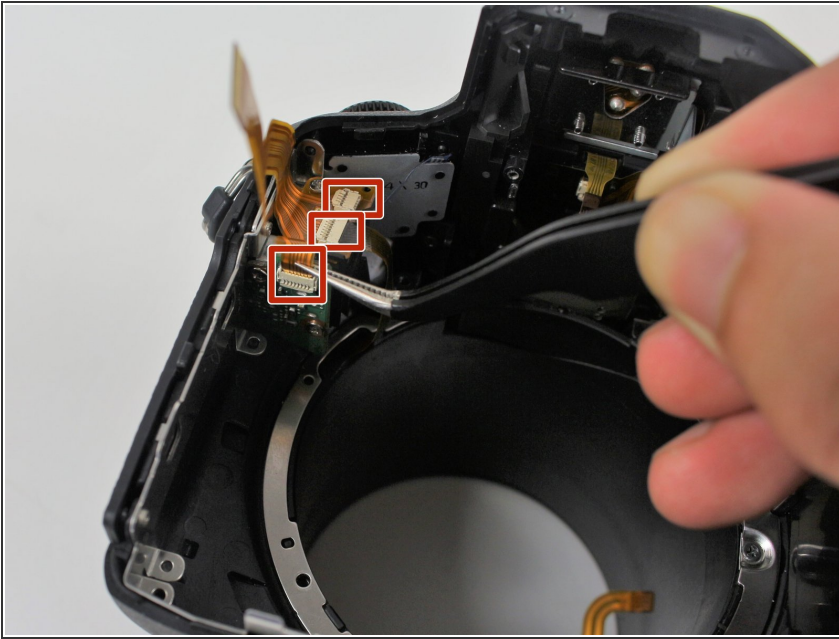
Step 25



⚠ Keep the front of the lens face down. There are springs between the sensor and the lens which may fall out.

- Remove the three 4.0 mm Torx T5 screws attaching the sensor to the lens.
- Pull out the sensor.
- Pull out the three springs on top of the lens.

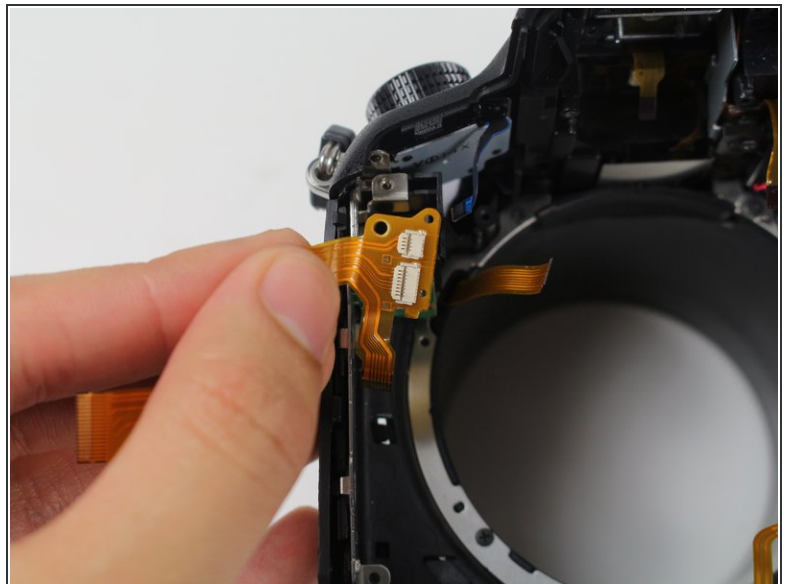
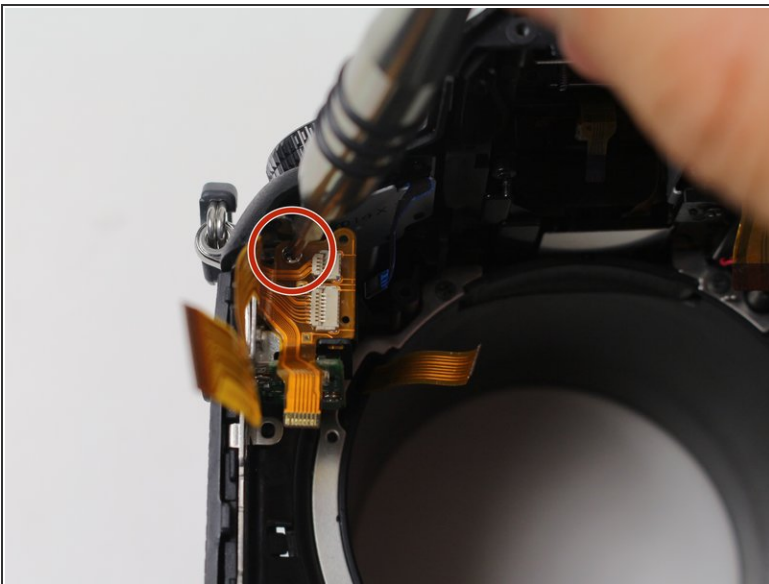
Step 26 — Panasonic Lumix DMC-FZ1000 Disassembly



⚠ In this step you will use tweezers to pull out several electronic ribbons. Be careful when pulling the ribbons, since they tear easily. To properly detach these ZIF connector ribbons, see [this technique on disconnecting ZIF connectors](#).

- Using tweezers, very carefully pull to disconnect the three ZIF connector ribbons beside the MIC jack.

Step 27



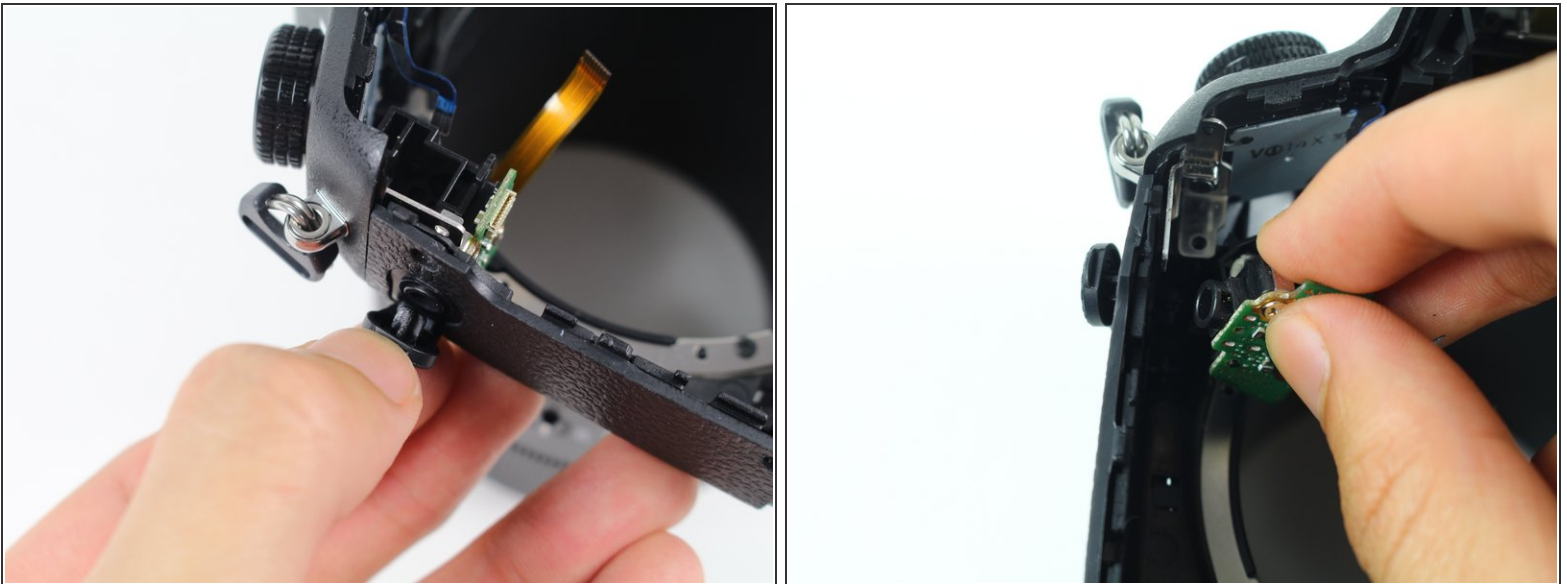
- Remove the 6.0 mm Phillips #00 screw from the electronic ribbon beside the audio jack.
- Pull out the electronic ribbon beside the audio jack.

Step 28



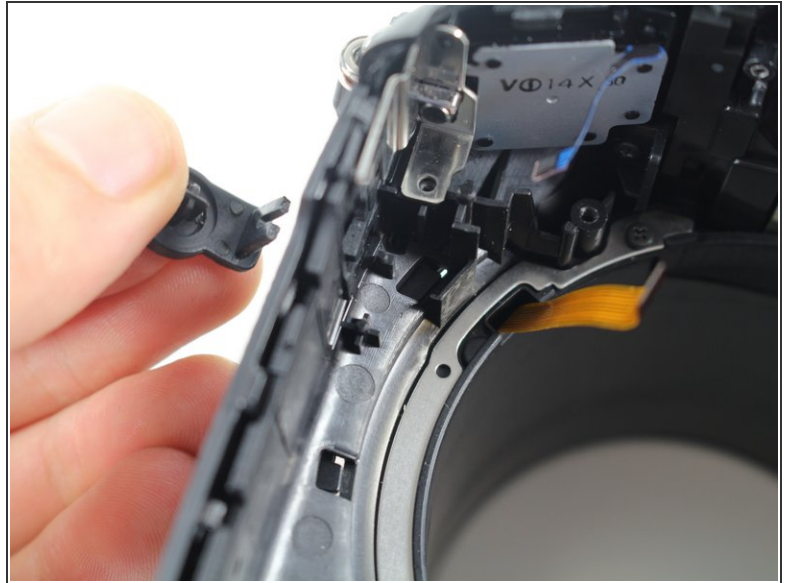
- Remove the 5.3 mm Phillips #00 screw at the bottom left corner of the the camera.
- Remove the 7.0 mm Phillips #00 screw beside the audio jack.
- Pull out the metal plate inside the camera near the audio jack.

Step 29



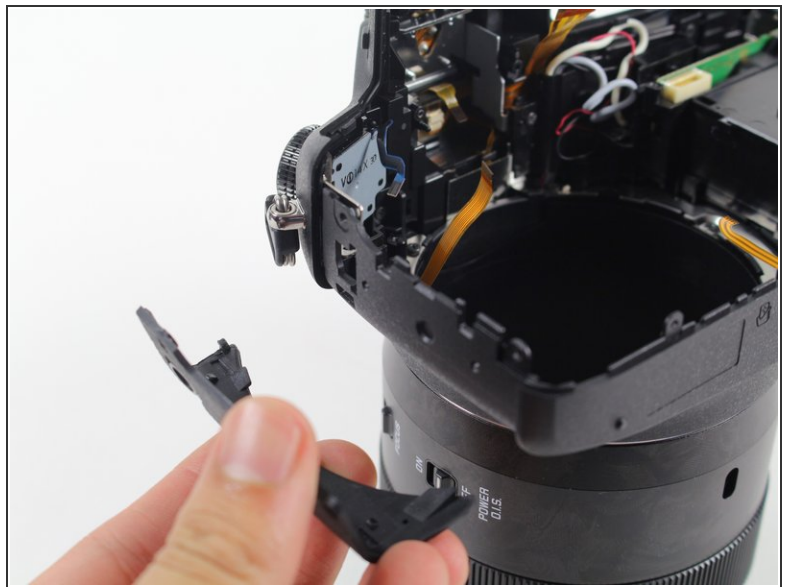
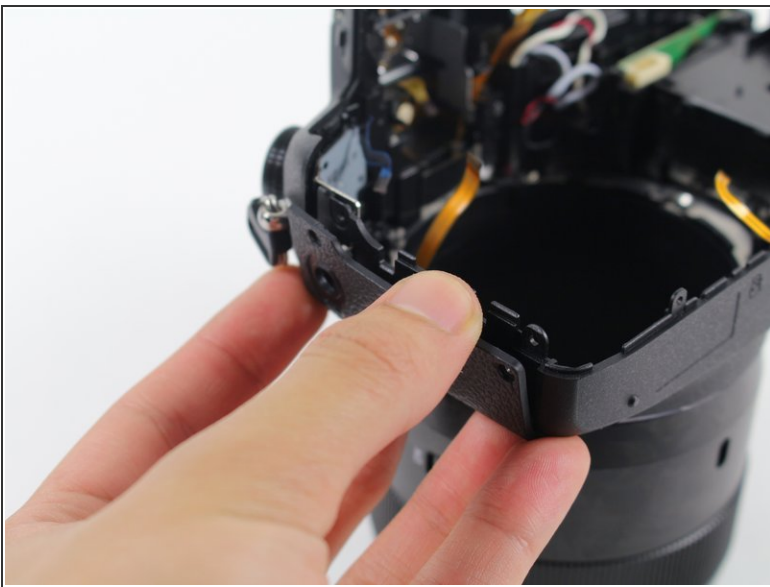
- Unplug the rubber audio jack cover from the audio jack.
- Pull out the audio jack.

Step 30



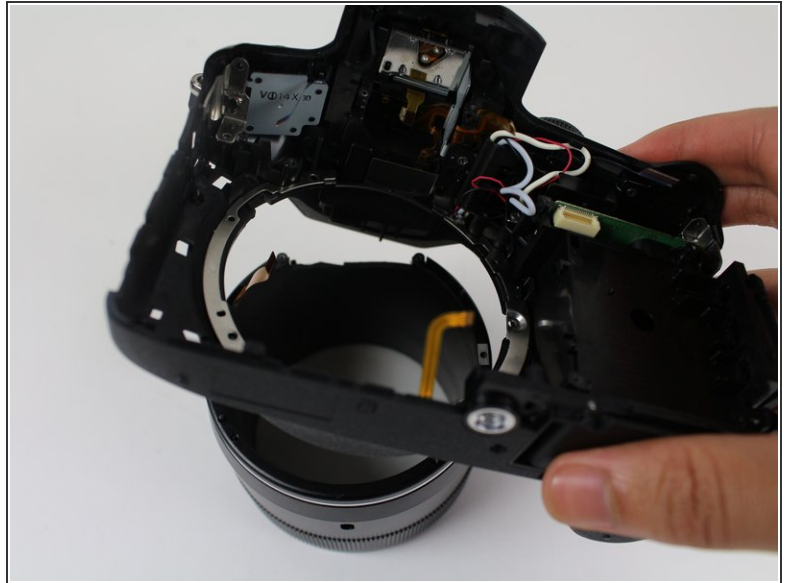
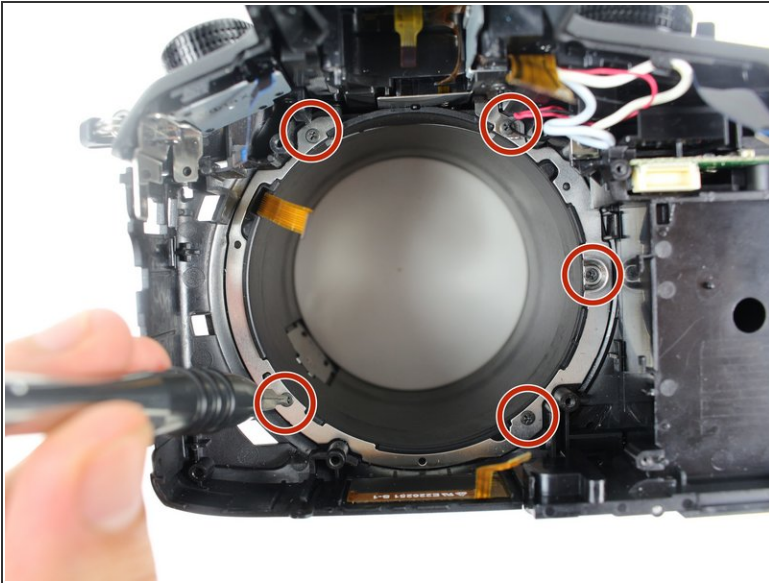
- Unhook the rubber audio jack plug from its peg, which is inside the camera.
- Set aside the rubber plug.

Step 31



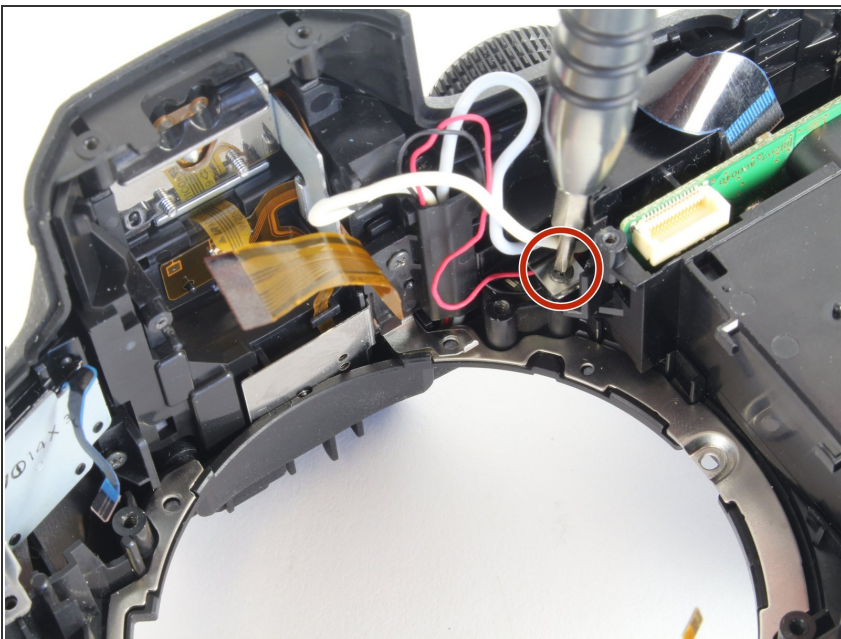
- Pull off the leather material on the left side of the camera.

Step 32



- Remove the five 5.0 mm Phillips #00 screws around the lens hole.
- Pull apart the camera body and the lens housing.

Step 33



- Remove the 5.0 mm Phillips screw from under the aperture mode selector.

Step 34



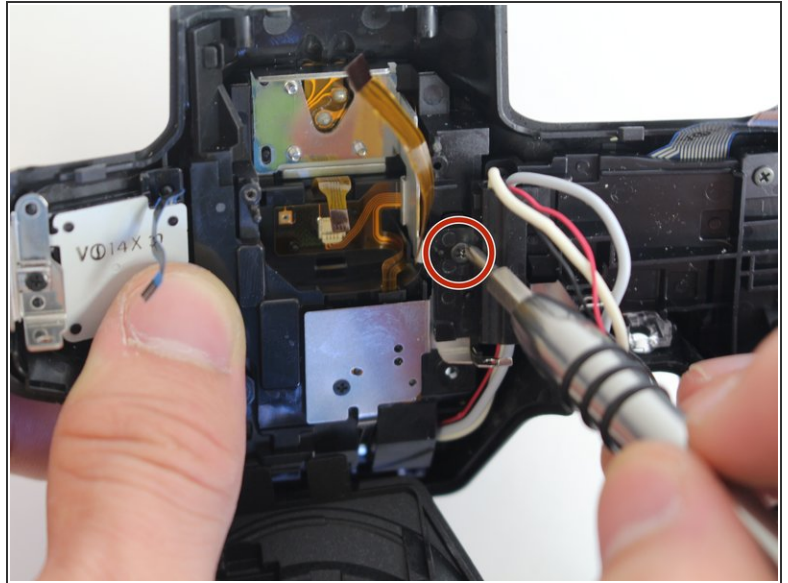
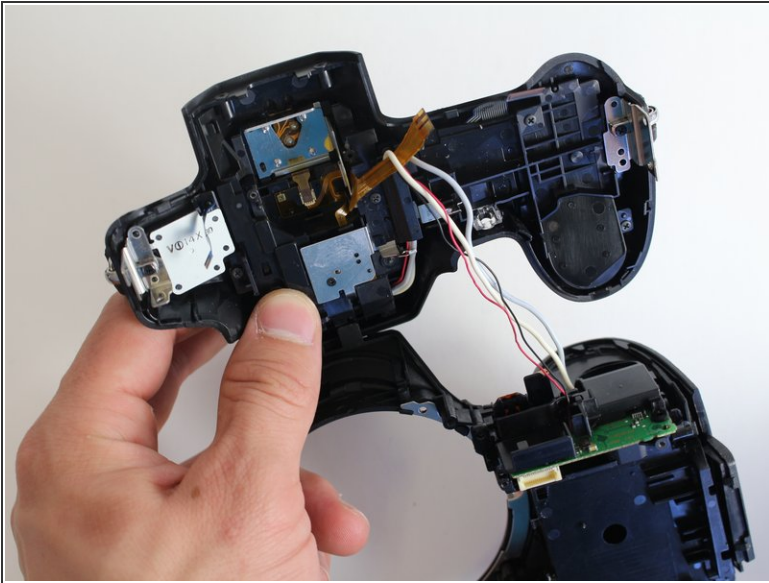
- Pop up the flash by pressing the flash OPEN switch on top of the camera.
- Remove the two 5.0 mm Phillips #00 screws in the flash compartment.

Step 35



- Remove the 5.0 mm Phillips #00 screw from the remaining leather material on the camera's side.

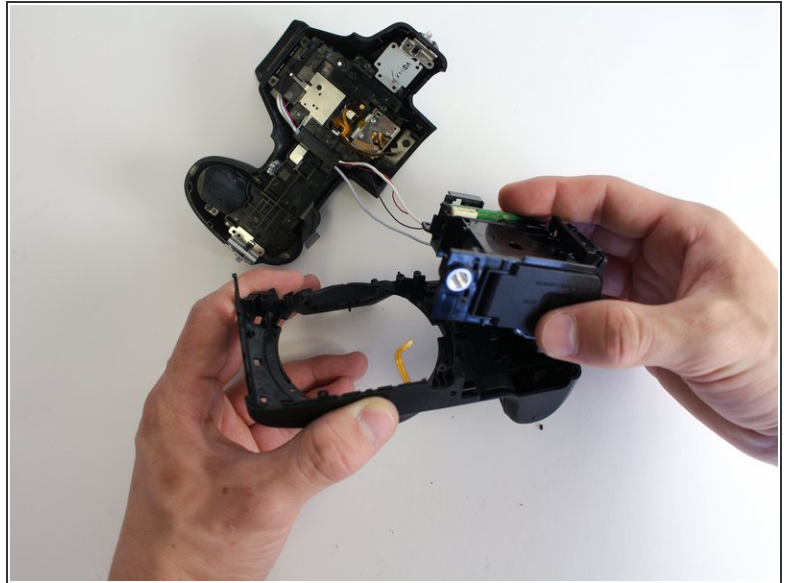
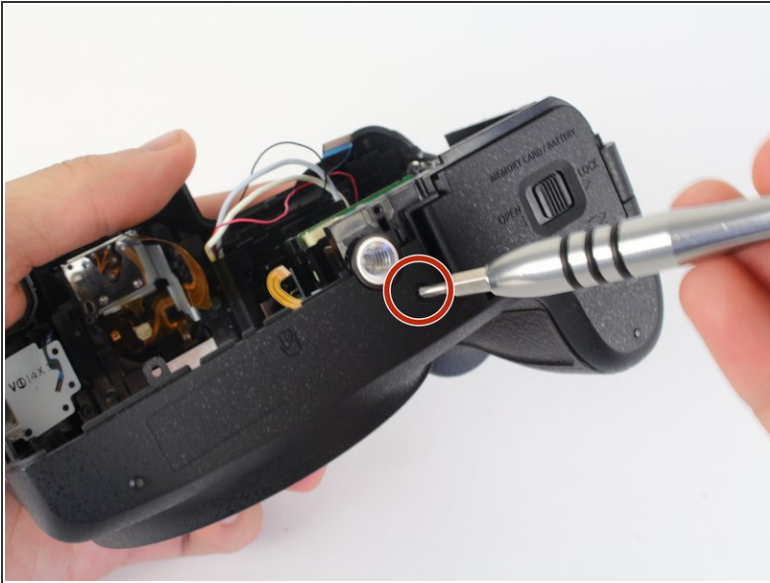
Step 36



⚠ Do not yank off the top panel of the camera. If you do, you will snap the electric wires that attach the panel to the battery housing.

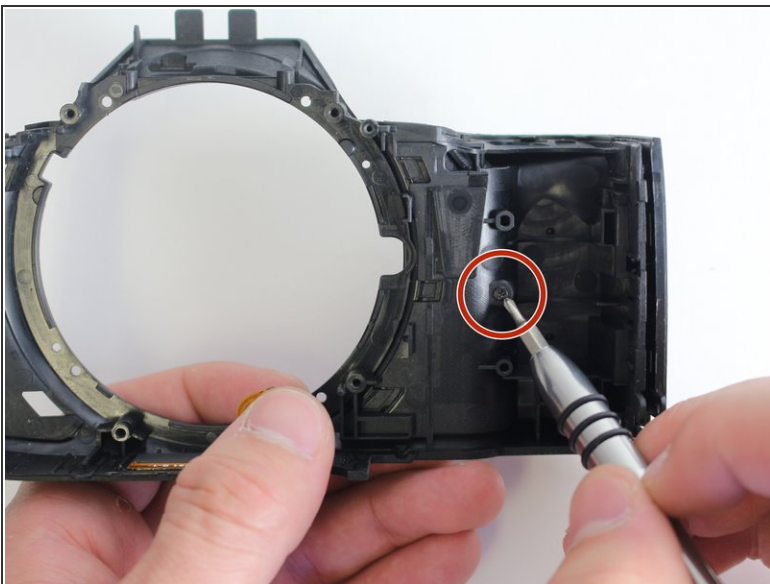
- Lift off the top panel of the camera.
- Remove the 5.0 mm Phillips #00 screw from the plastic that holds the electric wires.

Step 37



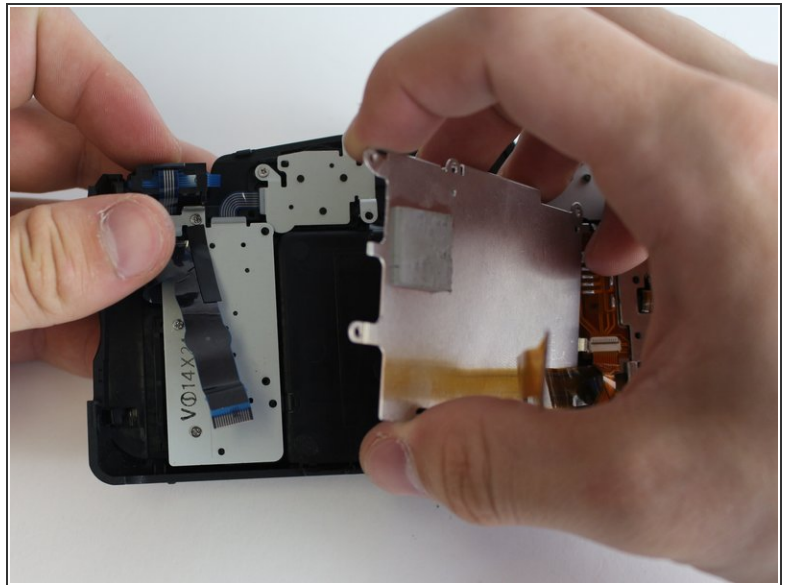
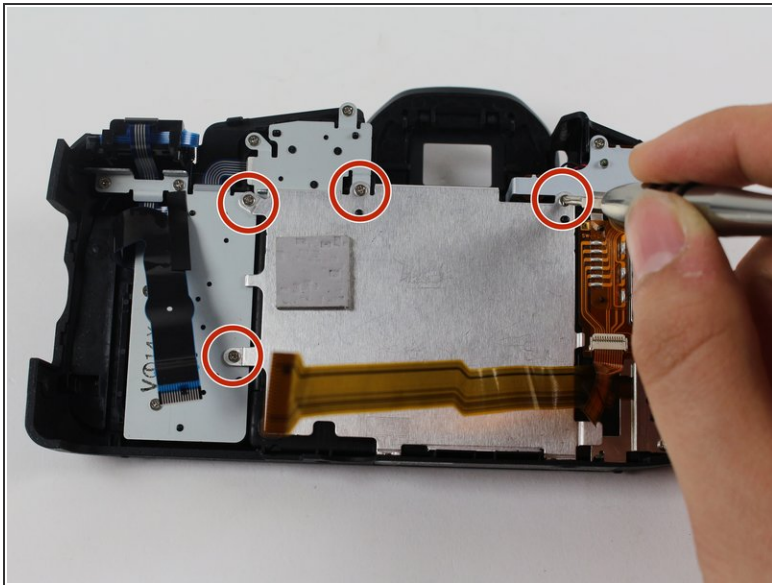
- Remove the 5.2 mm Phillips #00 screw below the tripod mount hole on the bottom of the camera.
- Pull out the battery housing.

Step 38



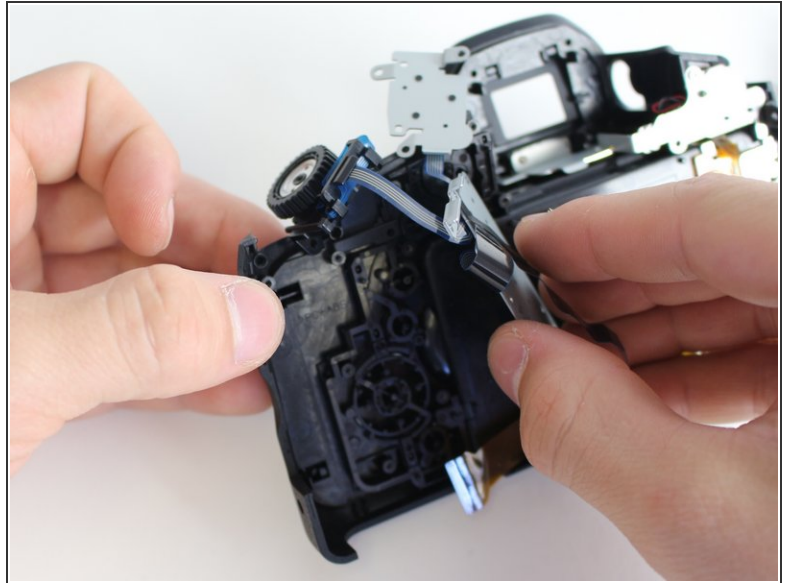
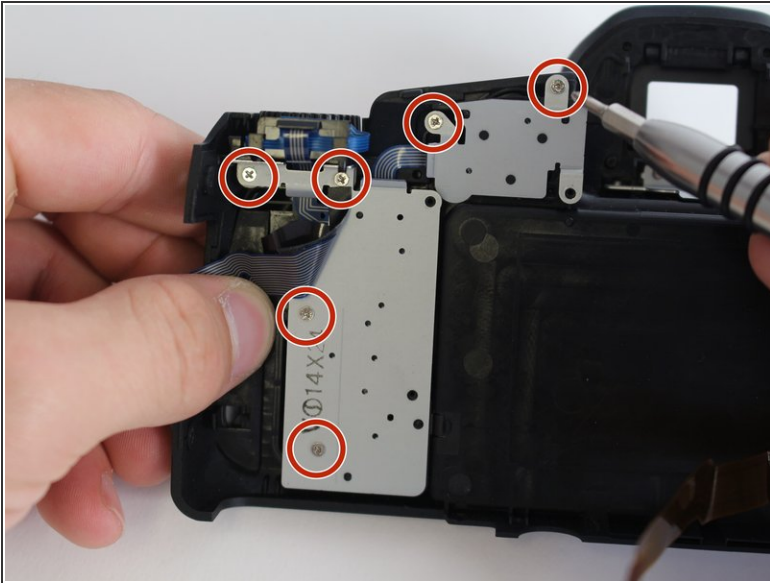
- Remove the 5.0 mm Phillips #00 screw that was beneath the battery housing.
- Pull off the leather material from the front of the camera.

Step 39



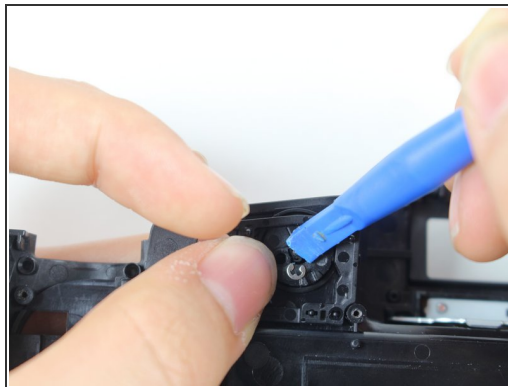
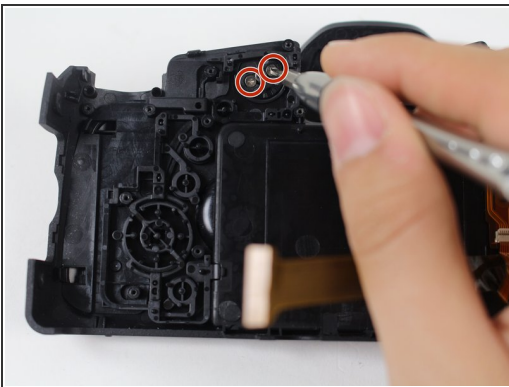
- Remove the four 5.0 mm Phillips #000 screws from central metal plate on the inside of the back plate of the camera.
- Pull out the central metal plate.

Step 40



- Remove the six 5.0 mm Phillips #000 screws from the three metal plates to the left of the viewfinder hole.
- Pull out the three metal plates.

Step 41



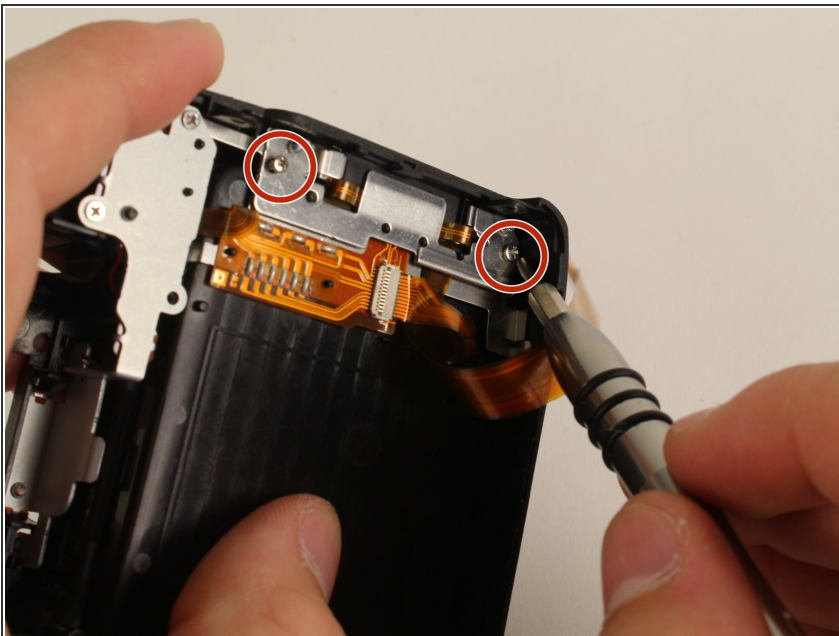
- Remove the two 3.0 mm Phillips #000 screws beside the viewfinder hole.
- Scoop out the tiny metal washer.
- Pull off the AF/AE LOCK dial from the outside of the back panel of the camera.

Step 42



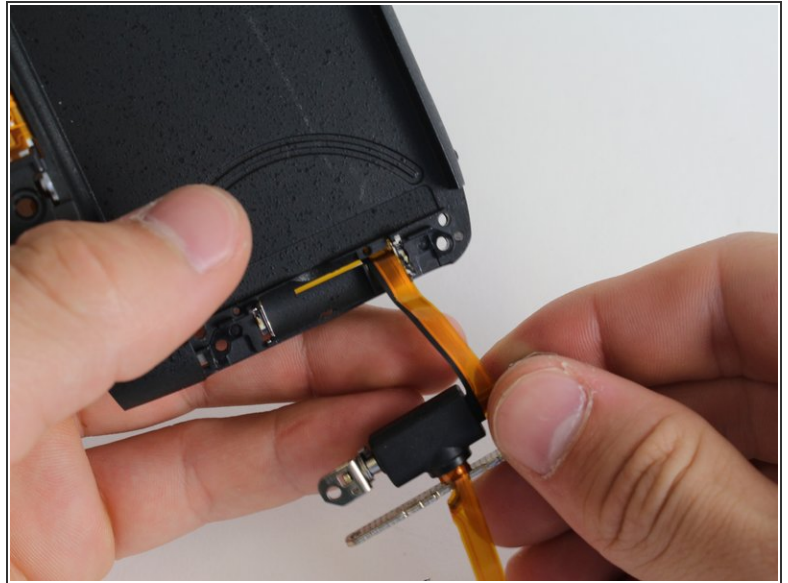
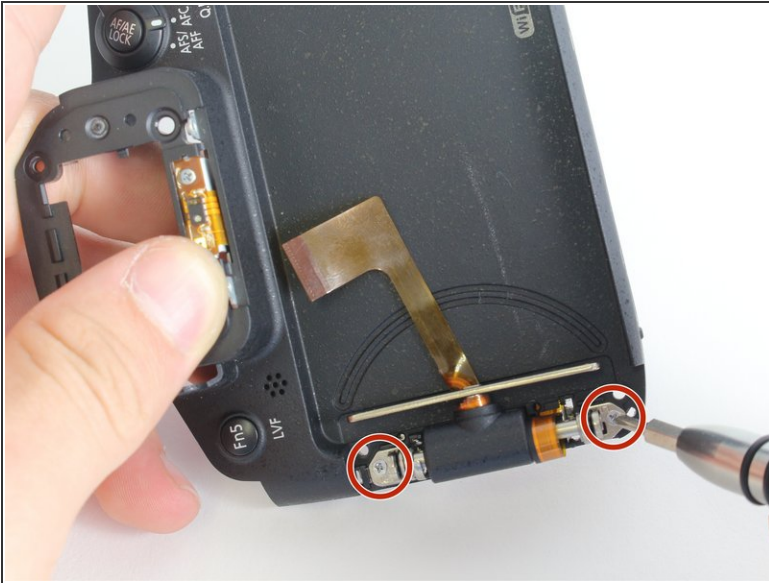
- Remove the two 2.3 mm screws from the bottom of the viewfinder rubber on the outside of the back panel.
- Pull off the viewfinder rubber.

Step 43



- Remove the two 10 mm Phillips #000 screws from the inside of the screen axle.
- Pull off the plastic covering from the outside of the screen axle.

Step 44



- Remove the two 6.3 mm Phillips #000 screws from the outside of the screen axle.
- Pull off the screen axle.

Step 45



i You have now completely disassembled your camera.

To reassemble your device, follow these instructions in reverse order.